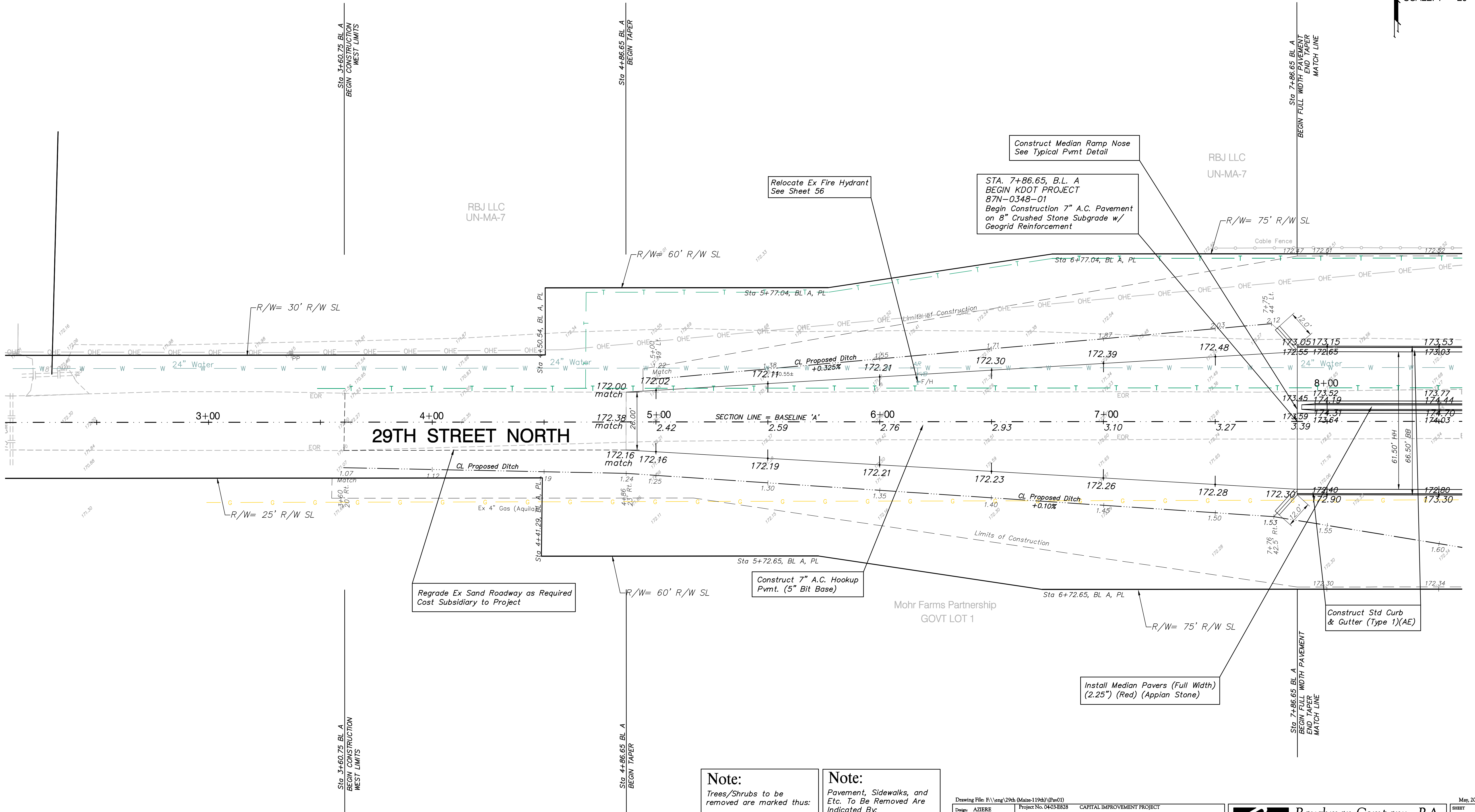


**BENCHMARKS**

BM#2 - City of Wichita Bench Mark Disc, Located at the Northwest Corner of 119th Street & 29th Street Intersection.  
Elev. = 1360.93 MSL (173.53 City Datum)

PRWA REGION NO.	STATE	PROJECT NO.	FISCAL YEAR	SHEET NO.	TOTAL SHEETS
7	KANSAS	87N-0348-01	2007	7	135



**Note:**  
Trees/Shrubs to be removed are marked thus:

**Note:**  
Pavement, Sidewalks, and Etc. To Be Removed Are Indicated By:

Drawing File: F:\eng\29th (Maine-119th)\(Pav01)  
 Design: AZIERE Project No. 0403-E828 CAPITAL IMPROVEMENT PROJECT  
 Drawn: AZIERE 29th Street Paving Plan  
 Approved: JFB Sta. 3+00 to Sta. 8+00  
 Scale: NOTED 29th Street Paving Project - Main Road to 119th Street

**Baughman Company, P.A.**  
 315 Ellis St. Wichita, KS 67211 P 316-262-7271 F 316-262-0149  
 ENGINEERING | SURVEYING | PLANNING | LANDSCAPE ARCHITECTURE  
 SHEET 7 OF 135  
 May, 2007