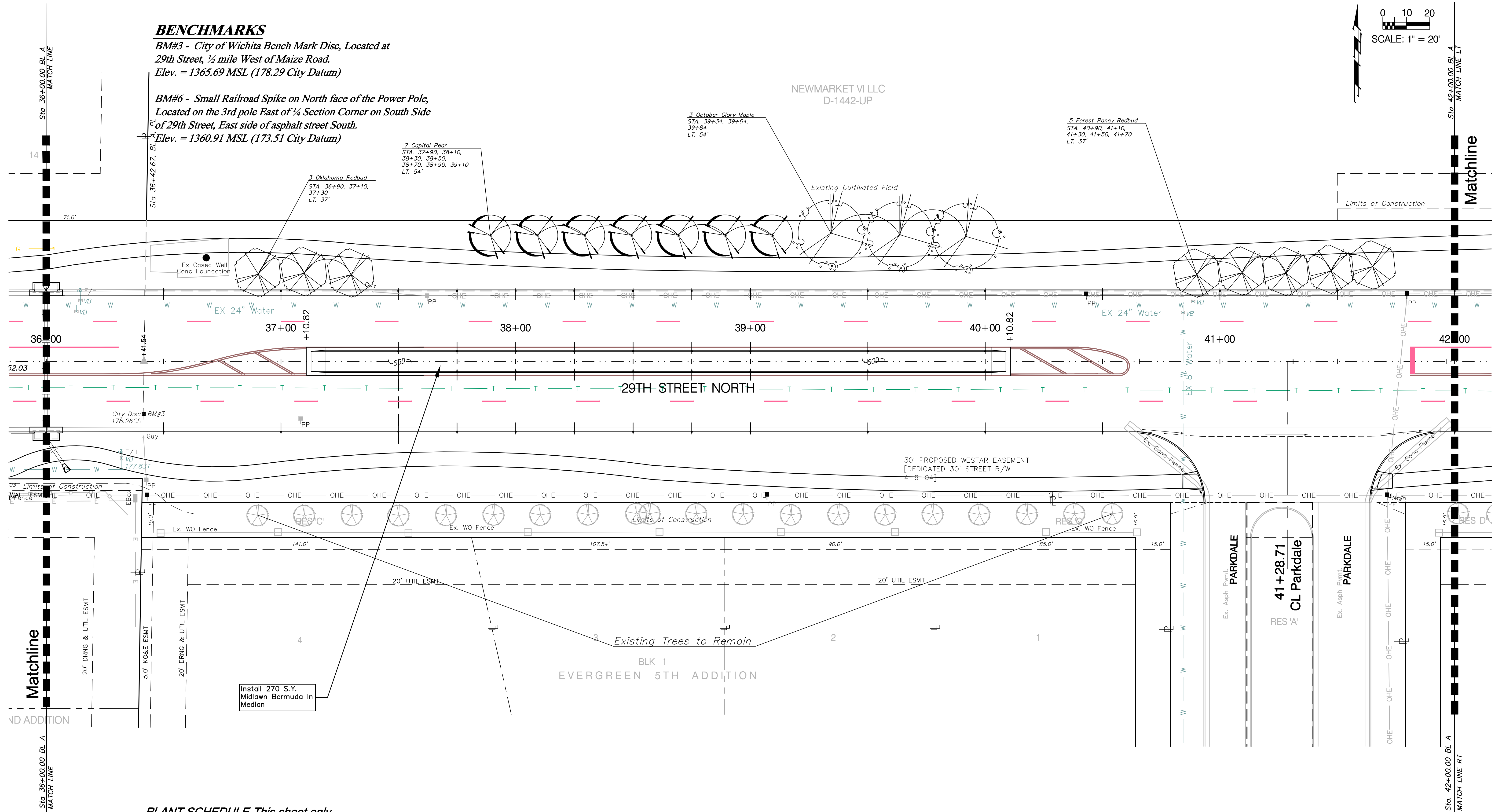


BENCHMARKS

BM#3 - City of Wichita Bench Mark Disc, Located at 29th Street, 1/2 mile West of Maize Road.
Elev. = 1365.69 MSL (178.29 City Datum)

BM#6 - Small Railroad Spike on North face of the Power Pole, Located on the 3rd pole East of 1/4 Section Corner on South Side of 29th Street, East side of asphalt street South.
Elev. = 1360.91 MSL (173.51 City Datum)



PLANT SCHEDULE-This sheet only

QTY	BOTANICAL NAME	COMMON NAME	SIZE	CONDITION	REMARKS
TREES					
3	<i>Acer rubrum</i> 'October Glory'	October Glory Maple	2" Cal.	B&B	Single Stem Only
ORNAMENTAL TREES					
5	<i>Cercis canadensis</i> 'Forest Pansy'	Forest Pansy Redbud	2" Cal.	B&B	Single Stem Only
3	<i>Cercis reniformis</i> 'Oklahoma'	Oklahoma Redbud	2" Cal.	B&B	Single Stem Only
7	<i>Pyrus calleryana</i> 'Capital'	Capital Pear	2" Cal.	B&B	Single Stem Only

Landscape Contractor to Install Hardwood Mulch at a Minimum Depth of 3"

Drawing File: F:\eng\29th (Maize-119th)\Landscape\29th Lscapebase.dwg

Project No. 03-06-601 CAPITAL IMPROVEMENT PROJECT

29th Street Landscape Plan
Sta. 36+00 to Sta. 42+00
29th Street Expansion & Beautification - Maize Road to 119th Street

Scale: 1" = 20'

Baughman Company, P.A.
315 Ellis St. Wichita, KS 67211 P 316-262-7271 F 316-262-0149
ENGINEERING | SURVEYING | PLANNING | LANDSCAPE ARCHITECTURE

June 2007

SHEET

101
OF
135