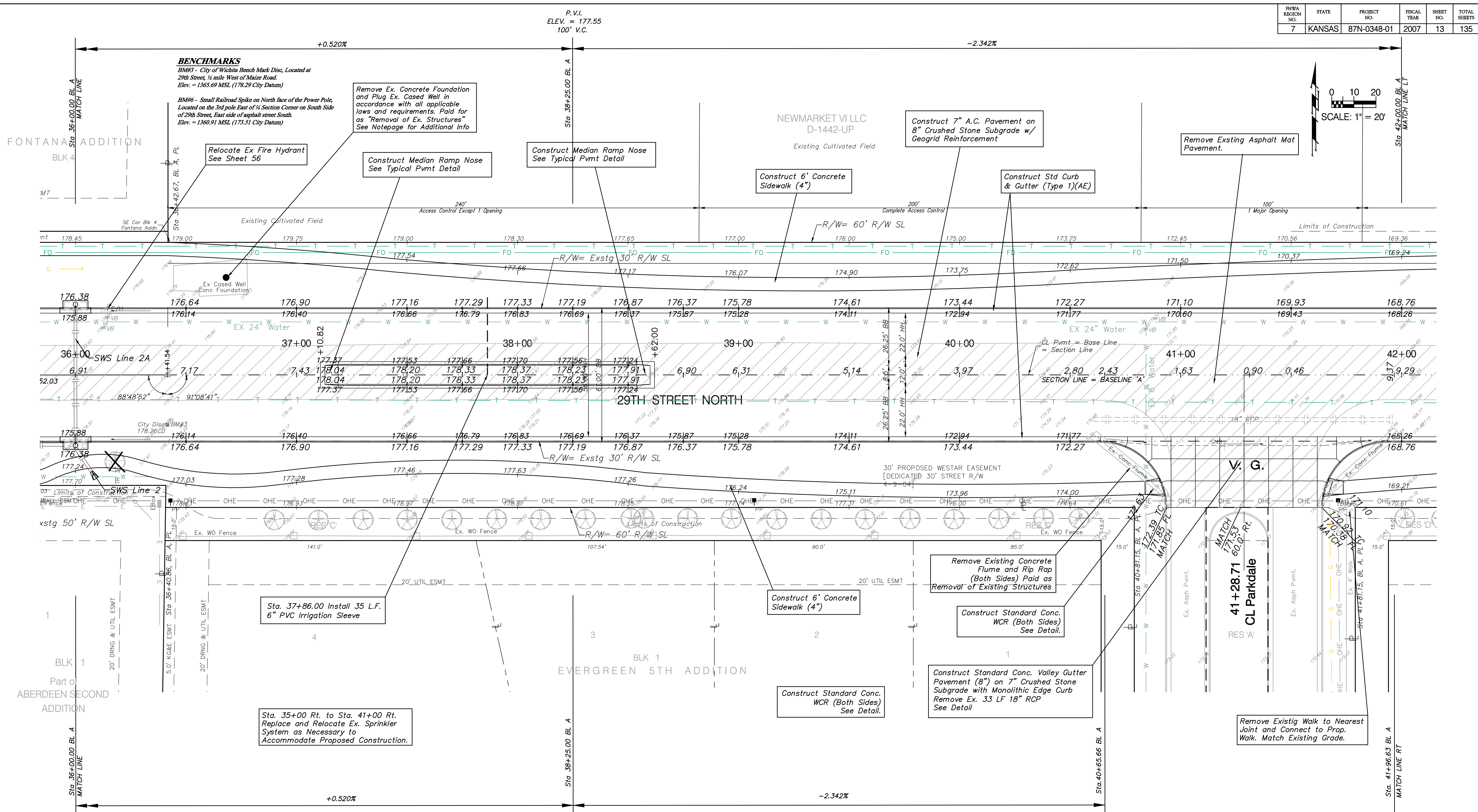
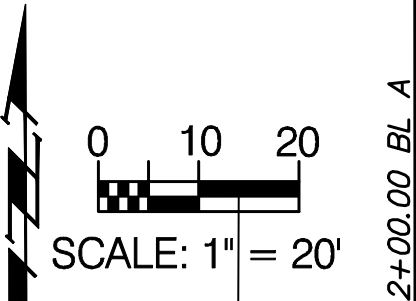


PRWA REGION NO.	STATE	PROJECT NO.	FISCAL YEAR	SHEET NO.	TOTAL SHEETS
7	KANSAS	87N-0348-01	2007	13	135

BENCHMARKS
 BM#3 - City of Wichita Bench Mark Disc, Located at 29th Street, 1/4 mile West of Maize Road. Elev. = 1365.69 MSL (178.29 City Datum)
 BM#6 - Small Railroad Spike on North face of the Power Pole, Located on the 3rd pole East of 1/4 Section Corner on South Side of 29th Street, East side of asphalt street South. Elev. = 1360.91 MSL (173.51 City Datum)



Construction Engineer shall be responsible for preserving Ex. Section Line Monument During Construction or for Resetting Monument Post Construction.

Note:
 N. 20,000.00, E. 20,000.00 Refers to point coordinates for 3/4" Iron Pin found at the Center of Section. Section 1/4 Cornerstone has been found 0.4 feet East of Iron. Final Monument Location should coincide with Center of Stone. (See General Notes for Additional Information.)

Note:
 Trees/Shrubs to be removed are marked thus:

Note:
 Pavement, Sidewalks, and Etc. To Be Removed Are Indicated By:

Drawing File: F:\eng\29th (Maize-119th)\(Pav07)
 Design: AZIERE Project No. 0403-E828 CAPITAL IMPROVEMENT PROJECT
 Drawn: SONNY
 Approved: JFB
 Scale: NOTED
29th Street Paving Plan
 Sta. 36+00 to Sta. 42+00
 29th Street Paving Project - Maize Road to 119th Street