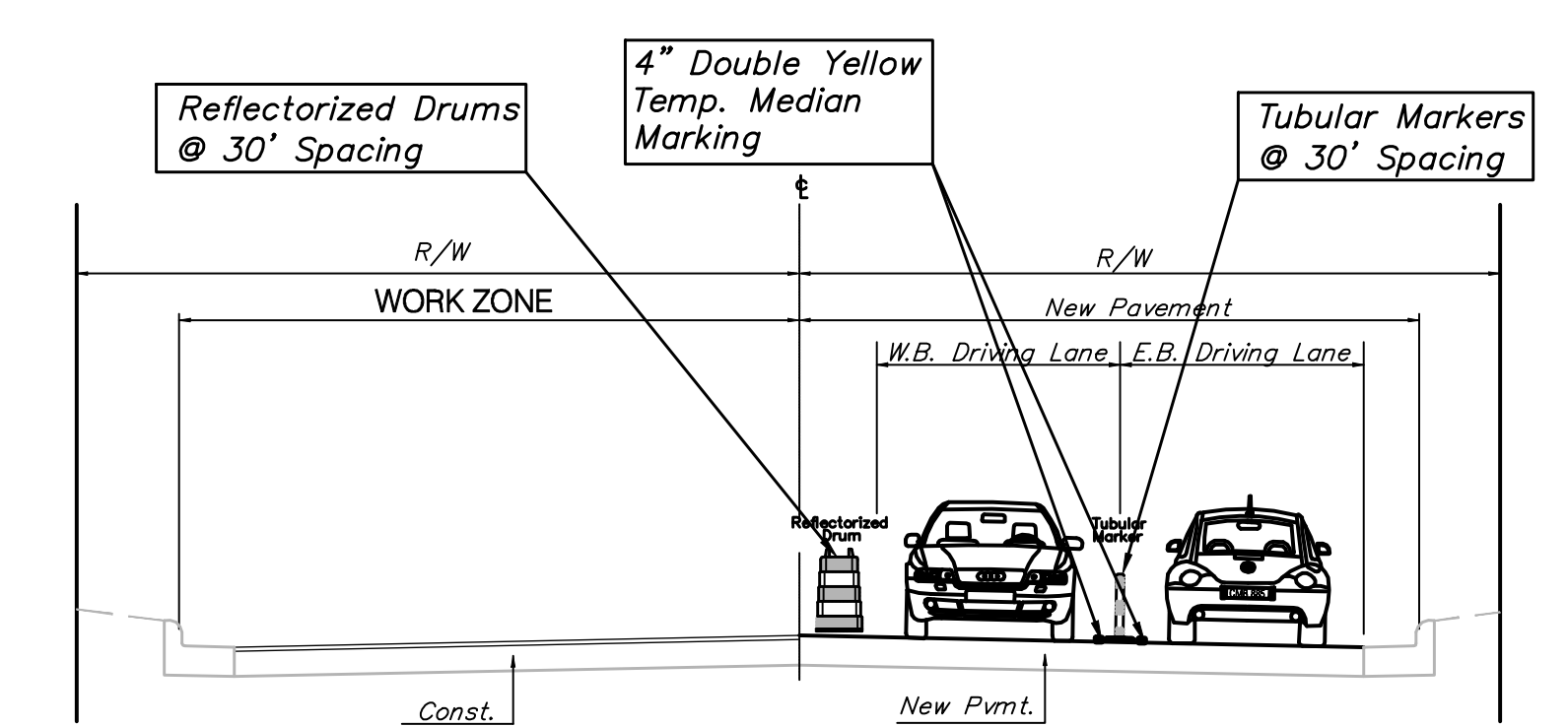
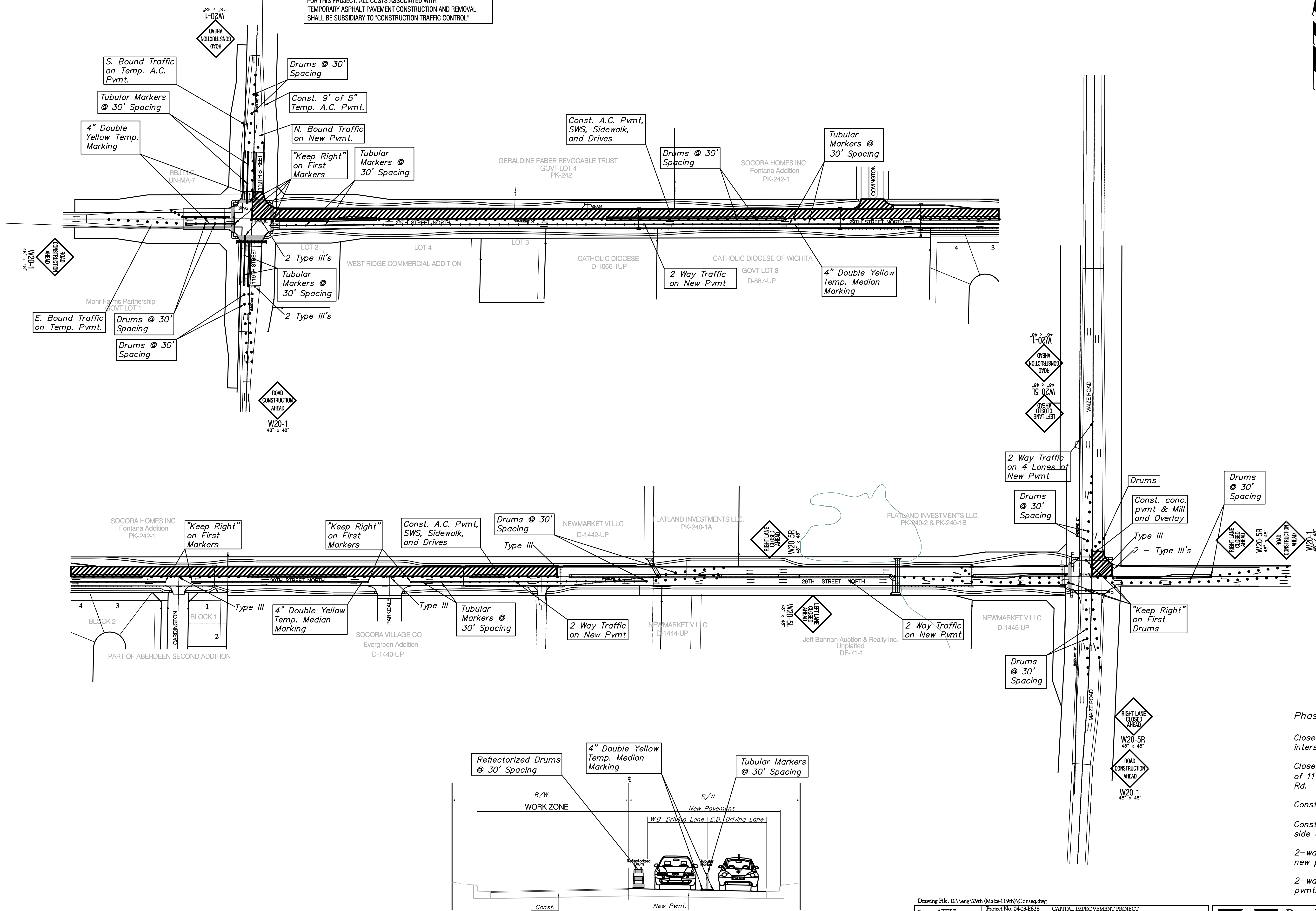


PRWA REGION NO.	STATE	PROJECT NO.	FISCAL YEAR	SHEET NO.	TOTAL SHEETS
7	KANSAS	87N-0348-01	2007	81	135

0 75 150  
SCALE: 1" = 150'

\*FOR INFORMATION ONLY  
1,575 S.Y. OF 5" TEMPORARY ASPHALT PAVEMENT WILL BE REQUIRED FOR THIS PROJECT. ALL COSTS ASSOCIATED WITH TEMPORARY ASPHALT PAVEMENT CONSTRUCTION AND REMOVAL SHALL BE SUBSIDIARY TO "CONSTRUCTION TRAFFIC CONTROL"



**Phase III**

- Close the N.E. quarter of 29th/Maize Rd. intersection.
- Close the N. side of 29th st. from the CL of 119th st. to approx. 1,600' W. of Maize Rd.
- Const. new pvmt. in the closed areas.
- Const. 5" Temp. A.C. pvmt. on the East side of 119th st. North of 29th st.
- 2-way traffic on 29th st. & Maize Rd. on new pvmt.
- 2-way traffic on 119th st. on Existing pvmt.

29th St. (Looking East)

CONSTRUCTION ZONE

Drawing File: E:\eng\29th (Maize-119th)\Conseq.dwg  
 Design: AZIERE Project No. 0403-E828 CAPITAL IMPROVEMENT PROJECT  
 Drawn: AZIERE  
 Approved: JFB  
 Scale: NOTED  
**Phase III**  
 Construction Sequencing  
 29th Street Paving Project - Maize Road to 119th Street

**Baughman Company, P.A.**  
 315 Ellis St. Wichita, KS 67211 P 316-262-7271 F 316-262-0149  
 ENGINEERING | SURVEYING | PLANNING | LANDSCAPE ARCHITECTURE

MARCH, 2007  
 SHEET 81 OF 135