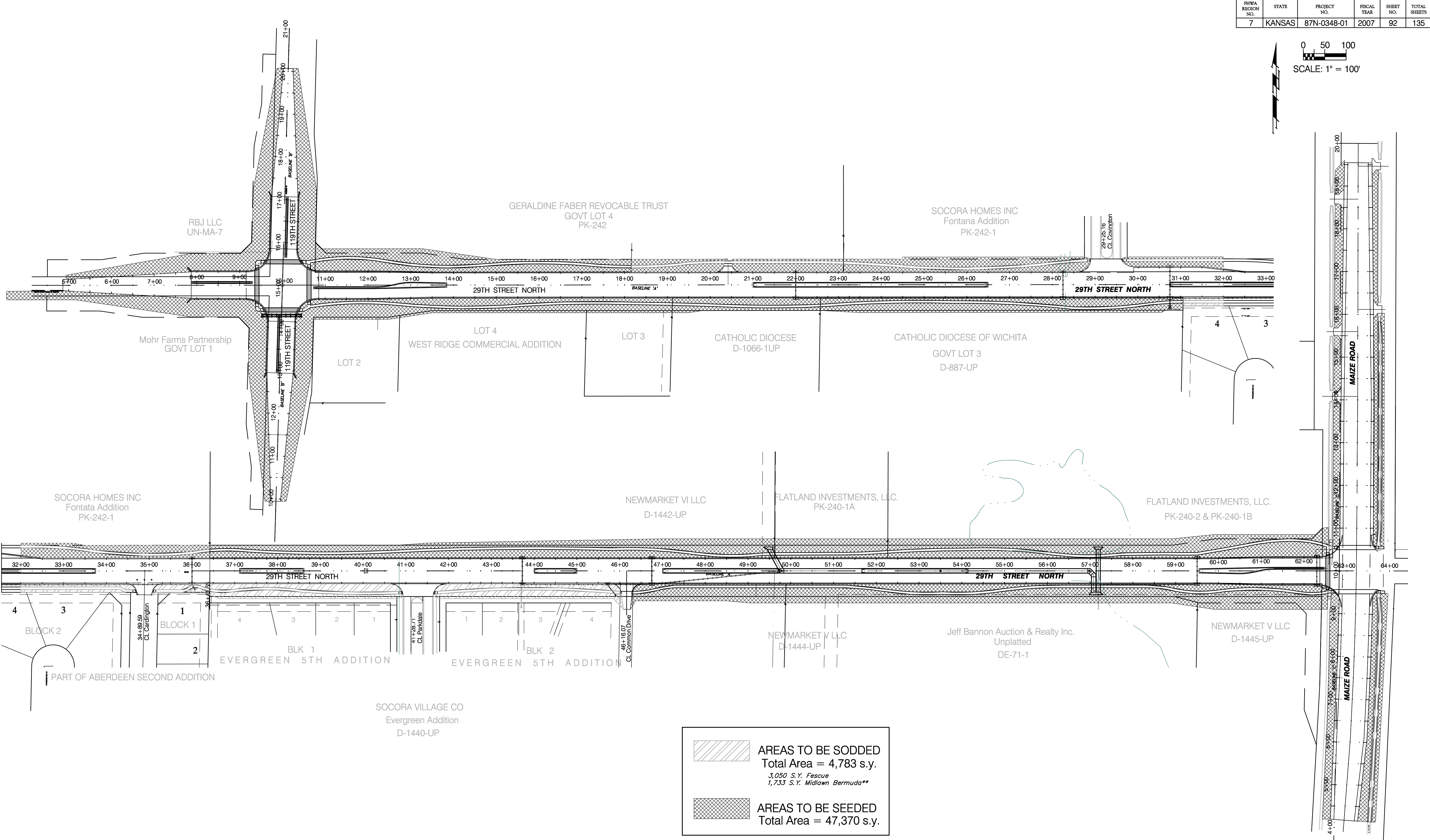
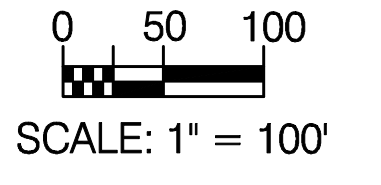


RTWA REGION NO.	STATE	PROJECT NO.	FISCAL YEAR	SHEET NO.	TOTAL SHEETS
7	KANSAS	87N-0348-01	2007	92	135



	AREAS TO BE SODDED Total Area = 4,783 s.y. 3,050 S.Y. Fescue 1,733 S.Y. Midlawn Bermuda**
	AREAS TO BE SEEDED Total Area = 47,370 s.y.

*ADDITIONAL SEEDING QUANTITIES AND LOCATIONS SHOWN ON THE DITCH PLAN.
**LOCATIONS OF MIDLAWN BERMUDA SOD SHOWN IN LANDSCAPING PLAN.

Drawing File: F:\eng\29th (Maize-119th)\SEED AND SOD PLAN
 Design: AZIERE Project No. 0403-E828 CAPITAL IMPROVEMENT PROJECT
 Drawn: AZIERE
 Approved: JFB
 Scale: NOTED

SEEDING AND SODDING PLAN

29th Street Paving Project - Maize Road to 119th Street

May, 2007
SHEET 92 OF 135

Baughman Company, P.A.
315 Ella St. Wichita, KS 67211 P 316-262-7271 F 316-262-0149
ENGINEERING | SURVEYING | PLANNING | LANDSCAPE ARCHITECTURE