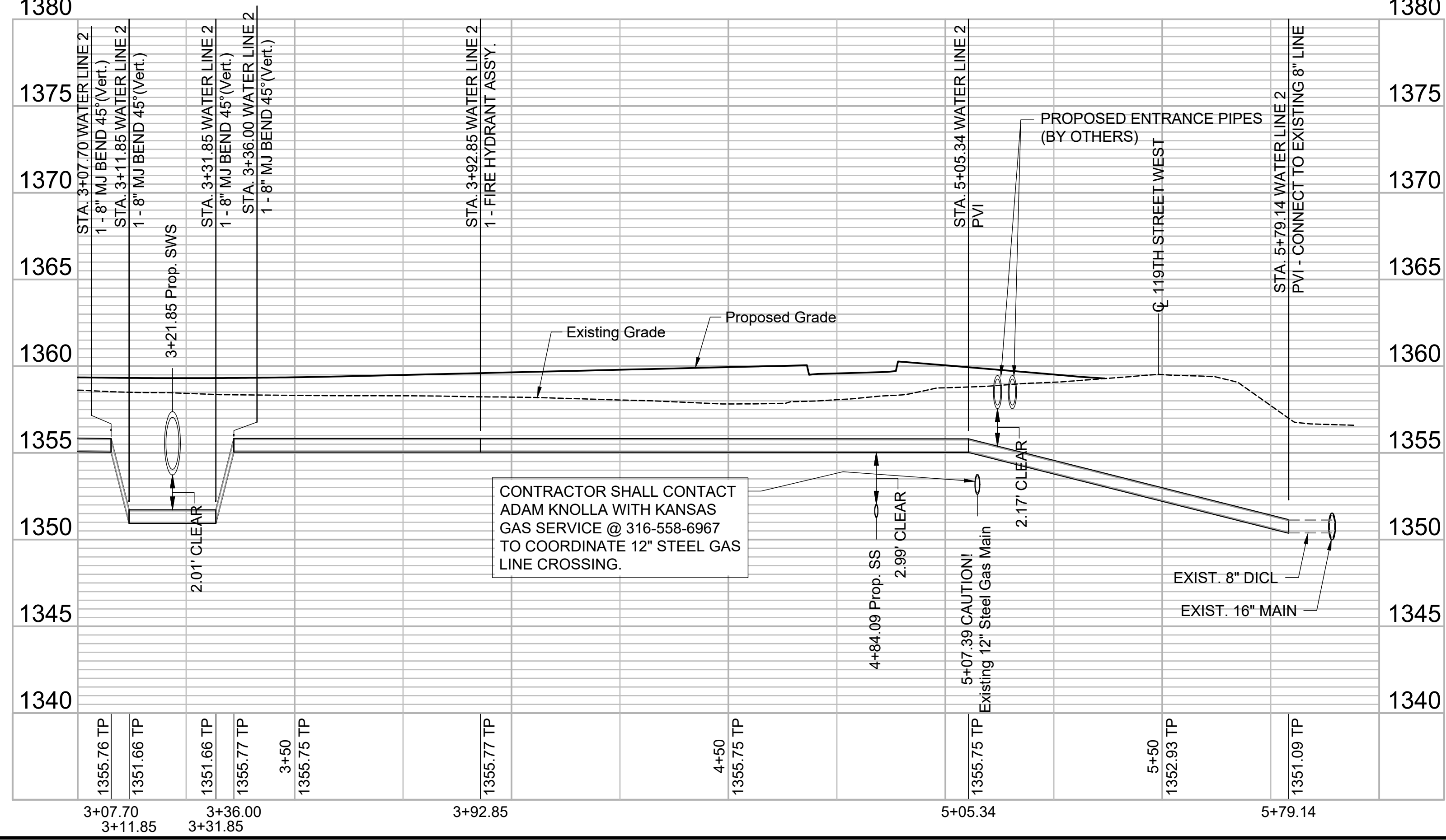
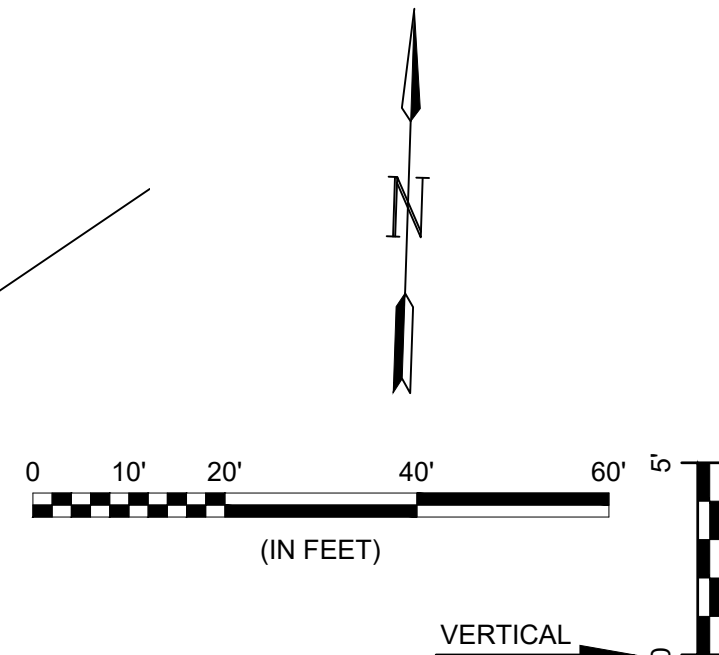
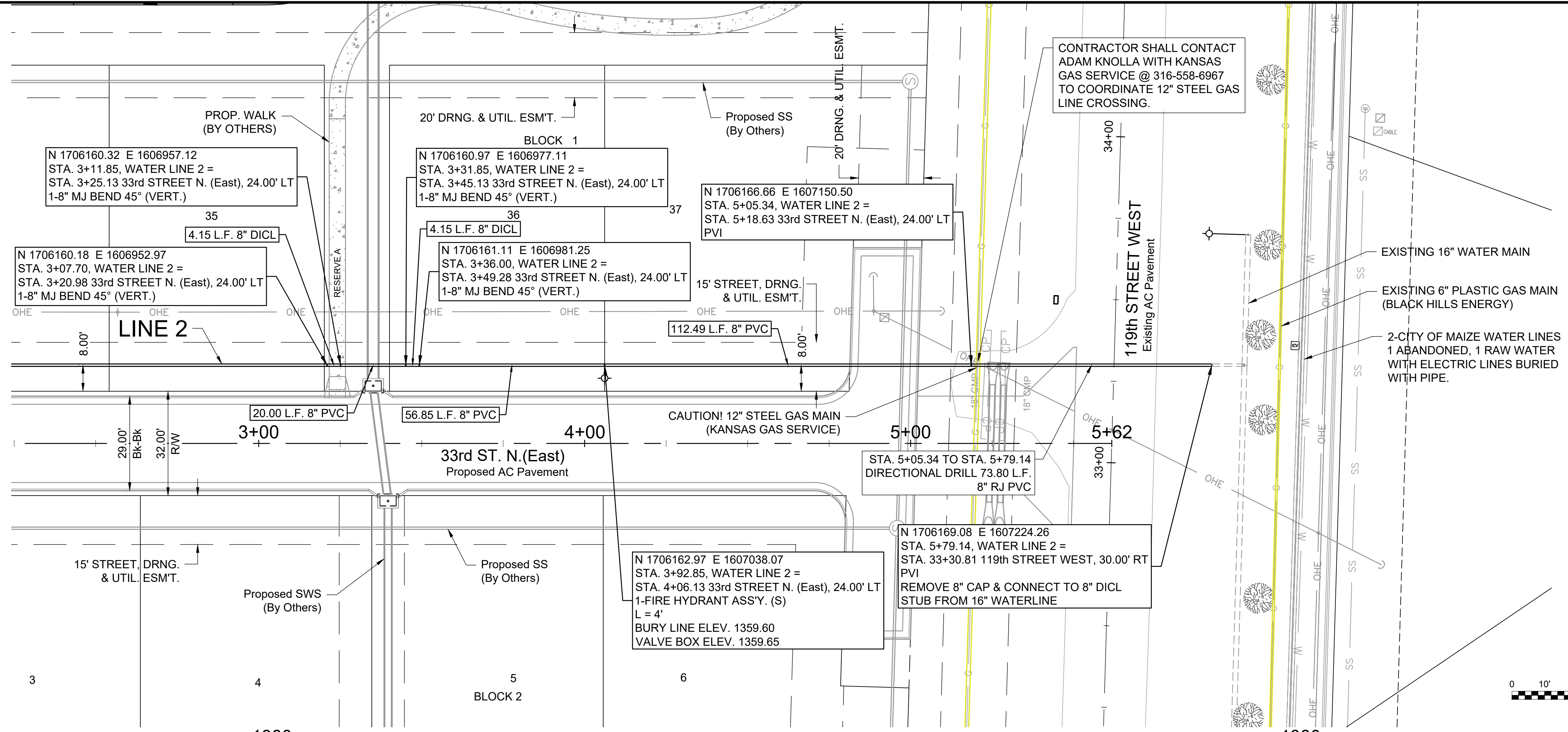


File: L:\2020\20T41152 - Mallard Estates Engineering\Drawings\C3D\WATER SHEETS\WATER LINE 2.dwg Last Save: 12/4/2020 10:06 AM Last saved by: DRStandrich
 Last plotted by: Standrich, Darryl R. Plot Style: --- Plot Scale: 1:2.5849 Plot Date: 12/4/2020 10:49 AM Plotter used: None



CONTRACTOR SHALL CONTACT
 ADAM KNOLLA WITH KANSAS
 GAS SERVICE @ 316-558-6967
 TO COORDINATE 12" STEEL GAS
 LINE CROSSING.

N 1706162.97 E 1607038.07
 STA. 3+92.85, WATER LINE 2 =
 STA. 4+06.13 33rd STREET N. (East), 24.00' LT
 1-FIRE HYDRANT ASSY. (S)
 L = 4'
 BURY LINE ELEV. 1359.60
 VALVE BOX ELEV. 1359.65

N 1706169.08 E 1607224.26
 STA. 5+79.14, WATER LINE 2 =
 STA. 33+30.81 119th STREET WEST, 30.00' RT
 PVI
 REMOVE 8" CAP & CONNECT TO 8" DICL
 STUB FROM 16" WATERLINE

CONTRACTOR SHALL CONTACT
 ADAM KNOLLA WITH KANSAS
 GAS SERVICE @ 316-558-6967
 TO COORDINATE 12" STEEL GAS
 LINE CROSSING.



© 2020 GARVER, LLC
 THIS DOCUMENT, ALONG WITH THE
 IDEAS AND DESIGNS CONVEYED
 HEREIN, SHALL BE CONSIDERED
 INSTRUMENTS OF PROFESSIONAL
 SERVICE AND ARE PROPERTY OF
 GARVER, LLC. ANY USE,
 REPRODUCTION, OR DISTRIBUTION
 OF THIS DOCUMENT, ALONG WITH
 THE IDEAS AND DESIGN CONTAINED
 HEREIN, IS PROHIBITED UNLESS
 AUTHORIZED IN WRITING BY
 GARVER, LLC OR EXPLICITLY
 ALLOWED IN THE GOVERNING
 PROFESSIONAL SERVICES
 AGREEMENT FOR THIS WORK.

8535 E. 21st St. N.
 Suite 130
 Wichita, KS 67206
 (316) 264-8008



REV.	DATE	DESCRIPTION	BY



CITY OF WICHITA
 WICHITA, KANSAS
 MALLARD ESTATES
 MAIZE, KANSAS
 WATER PLANS

WATER LINE 2
 (2 of 2)

JOB NO.: 20T41152
 DATE: DEC. 2020
 DESIGNED BY: CMB
 DRAWN BY: DRS

BAR IS ONE INCH ON
 ORIGINAL DRAWING
 IF NOT ONE INCH ON THIS SHEET,
 ADJUST SCALES ACCORDINGLY.

DRAWING NUMBER

SHEET
 NUMBER **9** OF **18**