

GENERAL NOTES:

1. Contractor will be required to provide notice to utility companies a minimum of seventy-two (72) hours prior to any excavation, as follows:

Kansas One-Call 687-2470

The Contractor must notify the following in case of an emergency:

Cox Communications 262-4270
 Kansas Gas Service 1-888-482-4950
 Westar Energy 383-8650
 Aquila Energy 1-800-303-0357
 AT&T 268-2245
 City of Wichita Water Dept. 268-4563
 City of Wichita Sewer Maint. 268-4024
 City of Wichita Storm Sewer Maint. 268-4090
 City of Wichita Traffic Maint. 268-4034

2. Utility service lines, poles, valve boxes, meters, and etcetera are to be adjusted as necessary by others prior to construction unless the plans specifically call for their adjustment by the Contractor or unless the plans specifically identify a utility to be adjusted by its owner during construction. Existing utilities and their location, as shown on the plans, represent the best information obtainable for design. The Contractor will be required to work around existing utilities within the right-of-way which do not conflict with proposed construction.

3. Rubble from the removal of miscellaneous structures and excess excavation which is to be wasted shall be disposed of on sites to be provided by the Contractor. These sites shall be approved by the Engineer as to suitability, appearance and site location. Locations, in the opinion of the Engineer, that will leave an unsightly appearance will not be approved. All disposal sites must be approved by the Kansas Department of Health and Environment. Material either stockpiled or disposed of in a flood plain would require a Kansas State Board of Agriculture permit. Any material dumped in waters of the United States or wetlands is subject to U.S. Corps of Engineers permitting regulations. Any material buried or stockpiled beyond approved construction limits would require additional archaeological investigations unless buried in a previously approved borrow location.

4. Trees and shrubs in public right-of-way which are in direct conflict with proposed new construction shall be removed by the Contractor with the Engineer's approval. Trees and shrubs which are not in direct conflict with proposed new construction shall be saved and protected from damage.

5. The Contractor shall give all property owners and/or tenants of developed property abutting the construction of this project a minimum of ten (10) days notice prior to start of construction.

6. The Contractor shall be responsible for preserving property irons. The Contractor will be required to re-establish any property irons which are damaged or destroyed by his construction operations. Such irons shall be re-established by a licensed land surveyor in accordance with state laws.

7. All elevations shown are NAVD 88.

8. All areas disturbed during construction that will not be under proposed pavement shall be restored to match existing conditions.

9. The Contractor shall lay a tracer wire and set test stations along all water pipe installed in accordance with City Specifications and tracer wire detail on detail sheet W-101, cost subsidiary to pipe installation.

10. The Contractor shall protect from damage and support existing utilities through construction as approved by the utility owner and the Engineer at the contractor's expense.

11. Contractor shall limit the extent of trench openings overnight and weekends to less than 50 feet.

12. All existing and proposed erosion control measures including silt fencing, erosion control mat, straw bales, inlet barriers, and const. entrance shall be maintained throughout construction by the contractor and until project is accepted by the City of Wichita. The on-site engineer shall complete weekly reports on the status of erosion control measures. The contractor shall be required to comply with maintenance and/or replacement of erosion control measures as determined by the on-site engineer until project is accepted by City of Wichita. Maintenance and/or replacement of erosion control measures to be paid by L.S. bid item "Maintain Existing BMP's."

13. All excess excavation shall remain on-site and shall be stockpiled or spread at a location determined by the engineer.

14. All of Lewis Street R/W disturbed during construction shall be seeded, mulched, and fertilized as follows:

Seed: Kansas Premium Fescue Blend; 8 lbx PLS/1000 Sq. Ft.
 Annual Rye grass; 3 lbx/1000 Sq. Ft.
 Fertilizer - 12-24-12 Ratio; 45 Lbs./Ac.
 Mulch - 2 Tons Prairie Hay/Ac.

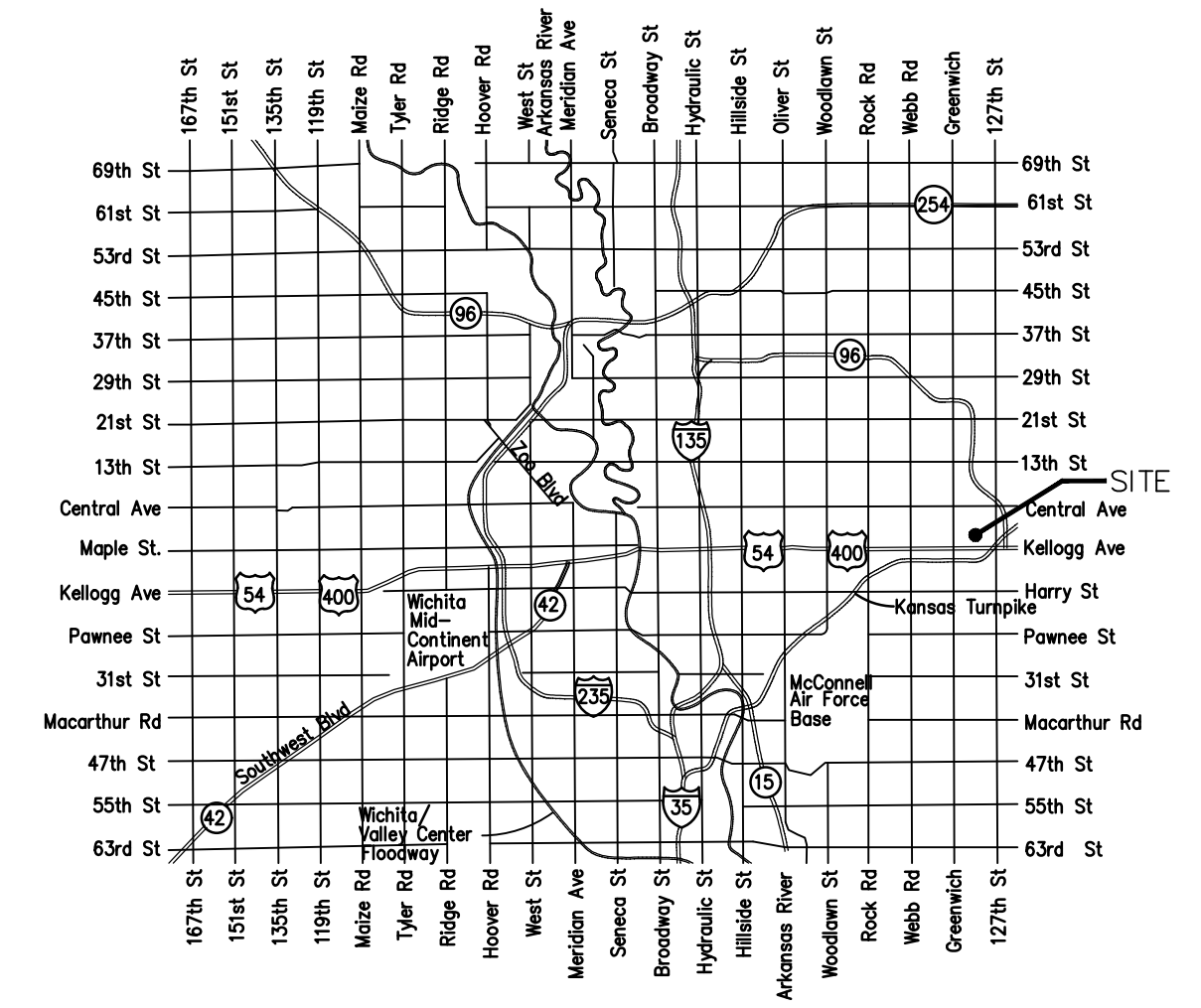
All costs associated with seeding, including mobilization, preparation of ground, seeding, fertilizing, mulching, etc. shall be included in the L.S. bid item "Seeding".

15. Opening and closing of water valves shall be done slowly to prevent damage to the water distributions system from water hammer. All valves closed by the contractor must be reopened as new construction permits. Project inspector must ascertain that any valve closed by the Contractor is reopened. Contractor will be permitted to operate water valves only when the project inspector assigned to the project is present.

16. The Developer for this project is Doug Malone, ICT Capital, 301 N. Main Street, Wichita, KS 67202 PH# (316)770-8311 email malone@ictcapital.com

WATER DISTRIBUTION SYSTEM to serve REYNOLDS 2ND ADDITION

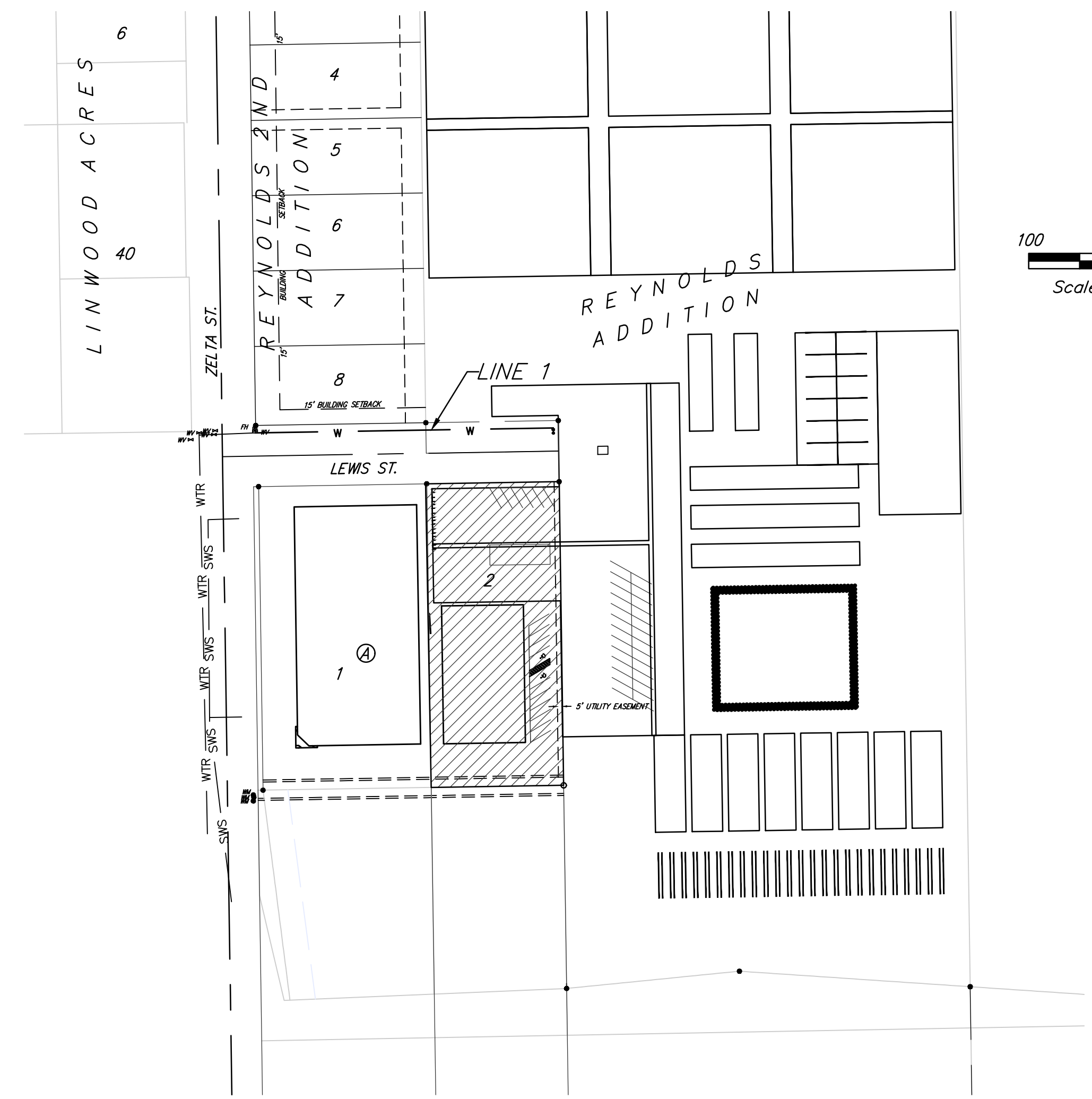
12011 E Lewis St.
 Wichita, KS 67207
 Gary Janzen, P.E. City Engineer
 Project Number
 448-2020-026830



VICINITY MAP

SHEET INDEX

Title Sheet	1
Standard Water Assembly Detail	2
Miscellaneous Water Details	3
Line 1	4
Erosion Control Plan	5
Erosion Control BMP Details	6-10
Coordinate Sheet	11
Copy of Plat	12



BENCHMARKS

- Site Benchmark - 1
 "X" chiseled on NW corner of catch basin located 21.6' W and 13.2' S of the southwest property corner.
 Elevation = 1362.77 (NAVD 88)
- Site Benchmark - 2
 "X" chiseled on top of curb located 16.4' W and 39.3' S of the intersection of centerlines of Waterman Street and Zelta Street.
 Elevation = 1370.35 (NAVD 88)
- Site Benchmark - 3
 "X" chiseled on top of curb located 43.7' E and 14.8' S of the intersection of centerlines of Zelta Street and Lewis Street.
 Elevation = 1367.77 (NAVD 88)

BENEFIT DISTRICT

Baughman

Baughman Company, P.A. 315 Ellis St. Wichita, KS 67211 P 316-262-7271 F 316-262-0149
 ENGINEERING | SURVEYING | PLANNING | LANDSCAPE ARCHITECTURE