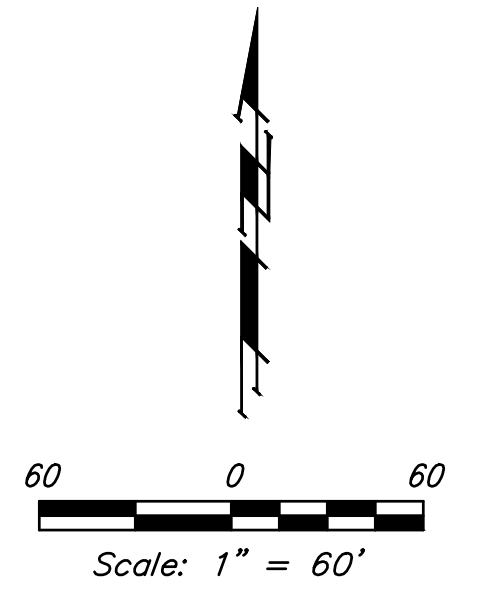


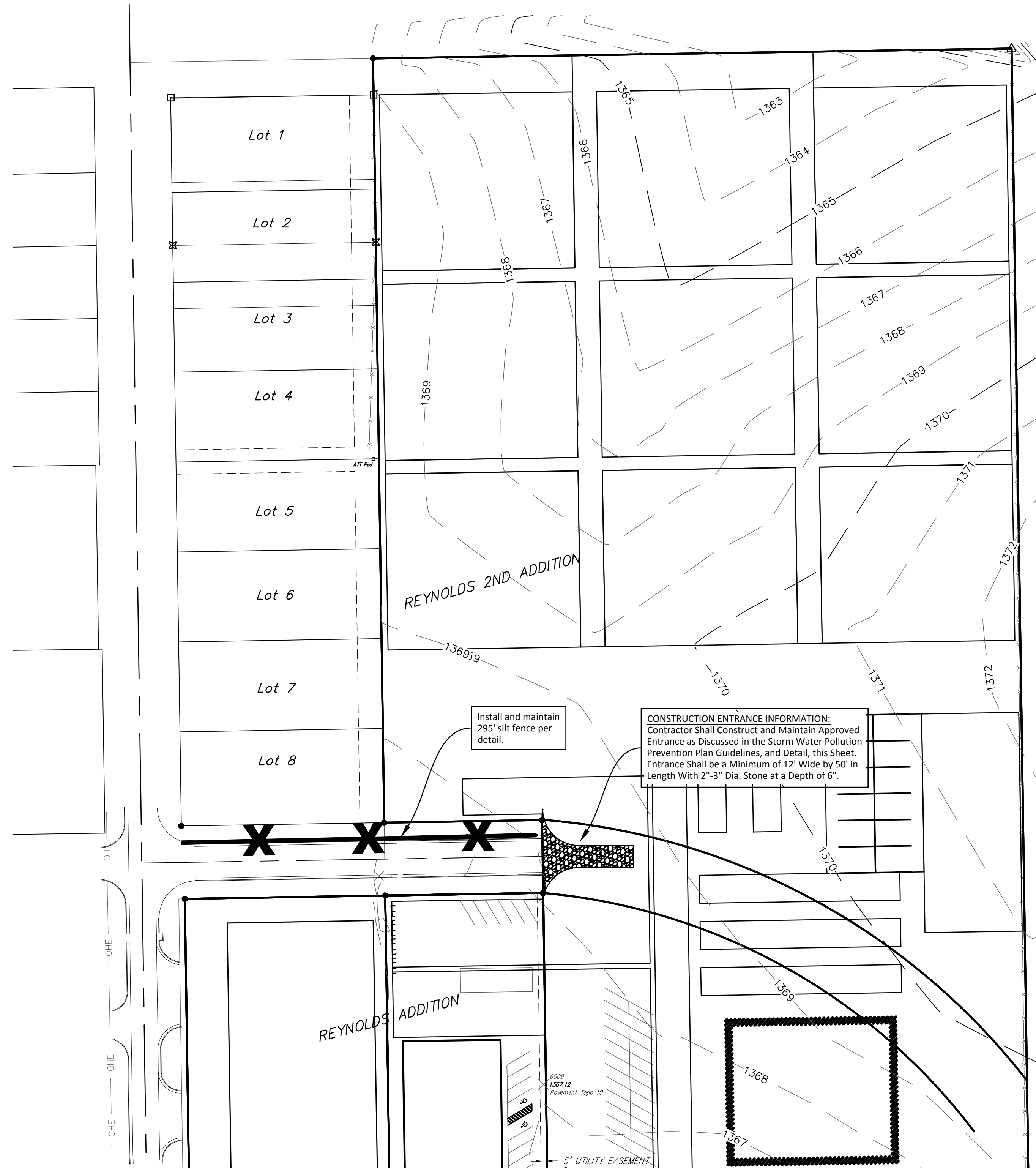
Site Benchmark - 1
 "X" chiseled on NW corner of catch basin
 located 21.6' W and 13.2' S of the southwest
 property corner.
 Elevation = 1362.77 (NAVD 88)

Site Benchmark - 2
 "X" chiseled on top of curb located 16.4' W and
 39.3' S of the intersection of centerlines of
 Waterman Street and Zelta Street.
 Elevation = 1370.35 (NAVD 88)

Site Benchmark - 3
 "X" chiseled on top of curb located 43.7' E and
 14.8' S of the intersection of centerlines of
 Zelta Street and Lewis Street.
 Elevation = 1367.77 (NAVD 88)



— X — SILT FENCING



NOTES:

- Contractor shall make sure all erosion control is in place before project is accepted. This plan represents the minimum standard. Any additional erosion control measures shall be installed by the Contractor as needed.
- Removal of Gravel Construction Entrance for pavement construction shall be included in bid item "Site Clearing & Restoration"
- This Plan is Not To Be Used As A Comprehensive Grading Plan. All Spot Elevations Are Proposed & Subject To Change.

All areas disturbed during construction shall be seeded, mulched, and fertilized as per Cover Sheet General Notes.

EROSION CONTROL MEASURE	INSTALL	MAINTAIN
CONSTRUCTION ENTRANCE (EA)	1	0
SILT FENCE (LF)	295	0

* ALL EXISTING BMPs INCLUDING CONSTRUCTION ENTRANCE, SEDIMENT BARRIERS, SILT FENCE, CUT-OFF TRENCH, AND EROSION CONTROL MAT SHALL BE MAINTAINED AND REPAIRED IF NECESSARY.

Baughman Reynolds 2nd Addition - Phase I
EROSION CONTROL
 Water Distribution System

Baughman Company, P.A. 315 Ellis St. Wichita, KS 67211 P 316-262-7271 F 316-262-0149
 ENGINEERING | SURVEYING | PLANNING | LANDSCAPE ARCHITECTURE

PROJECT NUMBER 448	DESIGN SRS	DRAWN SRS
REVISIONS:	APPROVED	DATE 09/08/20
	SCALE Noted	SHEET

5 OF 12

