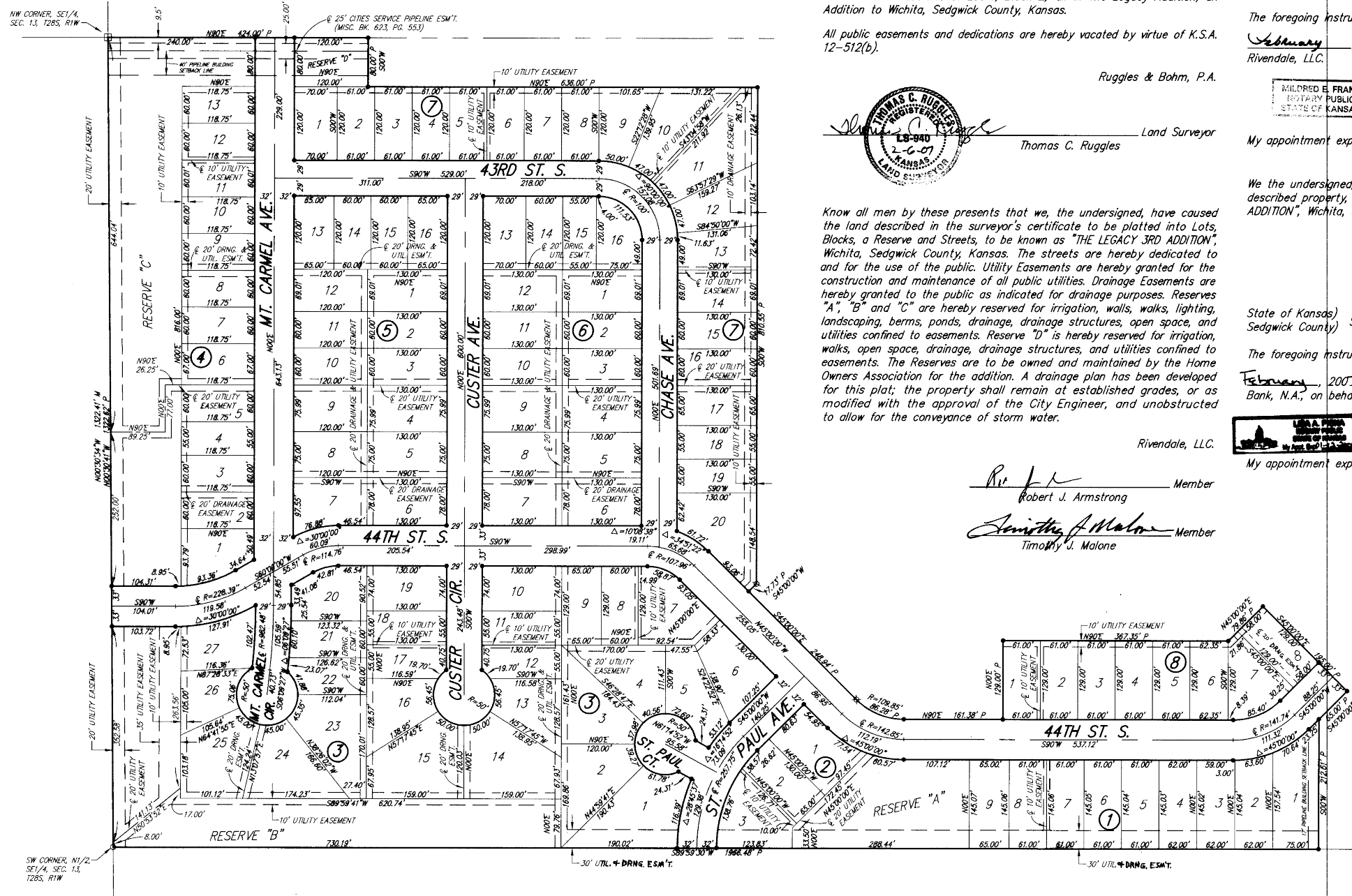


# THE LEGACY 3RD ADDITION

A replat of part of The Legacy Addition,  
Wichita, Sedgwick County, Kansas



BUILDING SETBACKS PER ZONING REGULATIONS

BENCH MARK: CITY OF WICHITA BENCH MARK AT MERIDIAN AND 43RD STREET SOUTH, 44 FEET NORTH AND 30 FEET EAST OF THE N.E. CORNER OF THE SE1/4 OF SECTION 13, T28S, R1W OF THE 6TH P.M. ELEV = 1280.80 N.S.V.D. 1249

ON-SITE BENCH MARK: CHISELED SQUARE ON THE TOP OF CURB ON THE EAST SIDE OF ST. PAUL, NORTH OF 44TH ST. S. 7.4' SOUTH OF CONCRETE DRIVE OF HOUSE #4498 39' EAST SOUTHEAST OF FIRE HYDRANT 7' SOUTHWEST OF WATER METER ELEV = 1280.40 N.S.V.D. 1249

State of Kansas) SS  
Sedgwick County)

We, Ruggles & Bohm, P.A., Land Surveyors in aforesaid county and state, do hereby certify that, under the supervision of the undersigned, we have surveyed and platted "THE LEGACY 3RD ADDITION", Wichita, Sedgwick County, Kansas, and that the accompanying plat is a true and correct exhibit of the property surveyed, described as follows:

Lots 1, 2, 3, 4, 5, 6, 7, 8, 9, 10 and 11, Block 1; Lots 1, 2, 3, 4, 5, 6, 7, 8, 9, 10, 11, 12, 13, 14, 15, 16, 17, 18, 19, 20, 21, 22, 23, 24, 25, 26, 27, 28, 29, 30, 31, 32, 33, 34, 35, 36, 37, 38, 39, 40, 41, 42, 43, 44, 45 and 46, Block 2; Lots 1, 2, 3, 4, 5, 6, 7, 8, 9, 10, 11, 12, 13, 14, 15, 16, 17, 18, 19, 20, 21, 22, 23 and 24, Block 3; Lots 1, 2, 3 and 4, Block 4; Lots 1, 2, 3, 4, 5, 6, 7 and 8, Block 5; Lots 1, 2, 3, 4, 5, 6 and 7, Block 7; and Reserves A, E, F and that part of Reserve B lying west of the extended east line of Lot 1, Block 2; all in The Legacy Addition, an Addition to Wichita, Sedgwick County, Kansas.

All public easements and dedications are hereby vacated by virtue of K.S.A. 12-512(b).

Ruggles & Bohm, P.A.

*Thomas C. Ruggles*  
Thomas C. Ruggles  
Land Surveyor

Know all men by these presents that we, the undersigned, have caused the land described in the surveyor's certificate to be platted into Lots, Blocks, a Reserve and Streets, to be known as "THE LEGACY 3RD ADDITION", Wichita, Sedgwick County, Kansas. The streets are hereby dedicated to and for the use of the public. Utility Easements are hereby granted for the construction and maintenance of all public utilities. Drainage Easements are hereby granted to the public as indicated for drainage purposes. Reserves "A", "B" and "C" are hereby reserved for irrigation, walls, walks, lighting, landscaping, berms, ponds, drainage, drainage structures, open space, and utilities confined to easements. Reserve "D" is hereby reserved for irrigation, walks, open space, drainage, drainage structures, and utilities confined to easements. The Reserves are to be owned and maintained by the Home Owners Association for the addition. A drainage plan has been developed for this plat; the property shall remain at established grades, or as modified with the approval of the City Engineer, and unobstructed to allow for the conveyance of storm water.

Rivendale, LLC.

*Robert J. Armstrong* Member  
*Timothy J. Malone* Member  
Timothy J. Malone

State of Kansas)  
Sedgwick County)

The foregoing instrument acknowledged before me, this 9<sup>th</sup> day of February, 2007, by Robert J. Armstrong, Member, on behalf of Rivendale, LLC.

*Mildred E. Franz*  
Mildred E. Franz  
Notary Public  
STATE OF KANSAS

My appointment expires 02-13-2007

State of Kansas)  
Sedgwick County)

The foregoing instrument acknowledged before me, this 1<sup>st</sup> day of February, 2007, by Timothy J. Malone, Member, on behalf of Rivendale, LLC.

*Mildred E. Franz*  
Mildred E. Franz  
Notary Public  
STATE OF KANSAS

My appointment expires 02-13-2007

We the undersigned, holders of a mortgage on a portion of the above described property, do hereby consent to this plat of "THE LEGACY 3RD ADDITION", Wichita, Sedgwick County, Kansas.

Legacy Bank, N.A.

*Brian Hudson*  
BRIAN HUDSON  
VICE PRESIDENT

State of Kansas)  
Sedgwick County)

The foregoing instrument acknowledged before me this 13<sup>th</sup> day of February, 2007, by Brian Hudson, Vice President of Legacy Bank, N.A., on behalf of the Bank.

*Brian Hudson*  
Notary Public  
My appointment expires 01-12-2009

This plat of "THE LEGACY 3RD ADDITION", Wichita, Sedgwick County, Kansas, has been submitted to and approved by the Wichita-Sedgwick County Metropolitan Area Planning Commission, Wichita, Kansas.

Dated this 7<sup>th</sup> day of December, 2006

Wichita-Sedgwick County Metropolitan Area Planning Commission

*John Schlegel*  
John L. Schlegel  
Secretary

This plat approved and all dedications shown hereon accepted by the City Council of the City of Wichita, Kansas, this 15<sup>th</sup> day of March, 2007

At the Direction of the City Council  
*Carlos Mayors*  
Carlos Mayors  
Mayor  
*Karen Sublett*  
Karen Sublett  
City Clerk

Reviewed in accordance with K.S.A. 12-205 on this 20<sup>th</sup> day of February, 2007

*Tricia L. Reardon*  
Tricia L. Reardon, L.S. #1246  
Deputy County Surveyor  
Sedgwick County Kansas

Entered on transfer record this 16<sup>th</sup> day of August, 2007

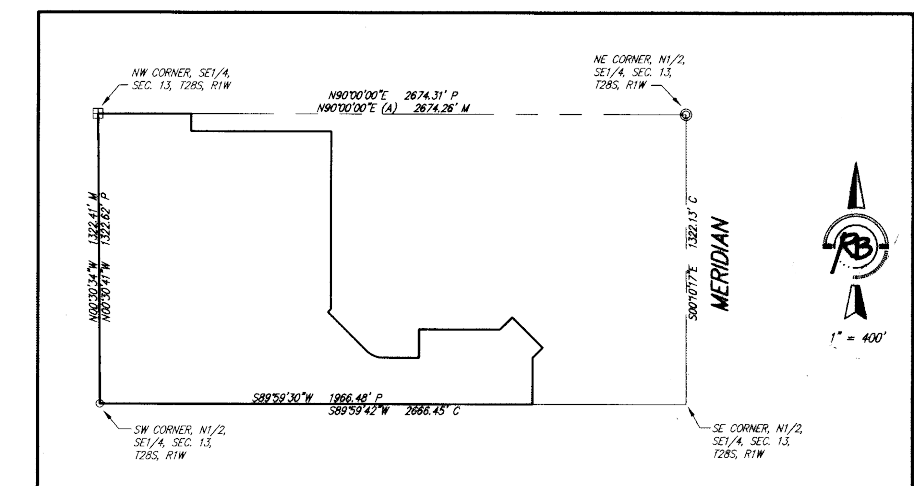
*Don Brace*  
Don Brace  
County Clerk

State of Kansas)  
Sedgwick County)

This is to certify that this plat has been filed for record in the office of the Register of Deeds, this 16<sup>th</sup> day of August, 2007, at 12:39:35 o'clock P.M. and is duly recorded.

*Jonny Buckingham*  
Jonny Buckingham  
Deputy Register of Deeds  
*Bill Week*  
Bill Week  
Deputy Register of Deeds  
*Tonya Buckingham*  
Tonya Buckingham  
Deputy Register of Deeds

Sedgwick County  
Register of Deeds - Bill Week  
DOC # FLH-16: 28908882  
Authorized By: [Signature]  
Date Recorded: 8/16/2007 12:39:35 PM  
Recording Fee: 420.00



Sheet 14 of 14

FOR INFORMATION ONLY

BLOCK	LOT NO.	ELEVATION (N.G. V.D.)
1	9	1282
2	1-3	1280
3	25-27	1282
4	1-13	1282
8	1-8	1281

- (A) = Assumed  
(C) = Calculated  
M = Measured  
P = Platted (The Legacy Addition)
- SURVEY MARKER LEGEND
- 1/2" CAPPED IRON PIPE OVER STONE (FOUND)
  - ⊗ 1/2" REBAR W/MKCC CAP (FOUND)
  - ⊗ 1/2" REBAR W/BLS CLS#188 CAP (FOUND)
  - ⊗ 3/4" IRON PIPE IN THIMBLE (FOUND)
  - ⊗ 1/2" REBAR W/MKCC CAP OVER STONE (FOUND)
  - 5/8" REBAR W/RUGGLES & BOHM CAP (SET)

DWG FILE: SURVEY BASE  
PROJECT NO: 2940F  
FEBRUARY 1, 2007

Ruggles & Bohm, P.A.  
Engineering, Surveying, Land Planning  
924 North Main  
Wichita, Kansas 67203  
www.rbkansas.com  
(318) 264-8008  
(316) 264-4621 fax  
E-mail: info@rbkansas.com

PC 19A