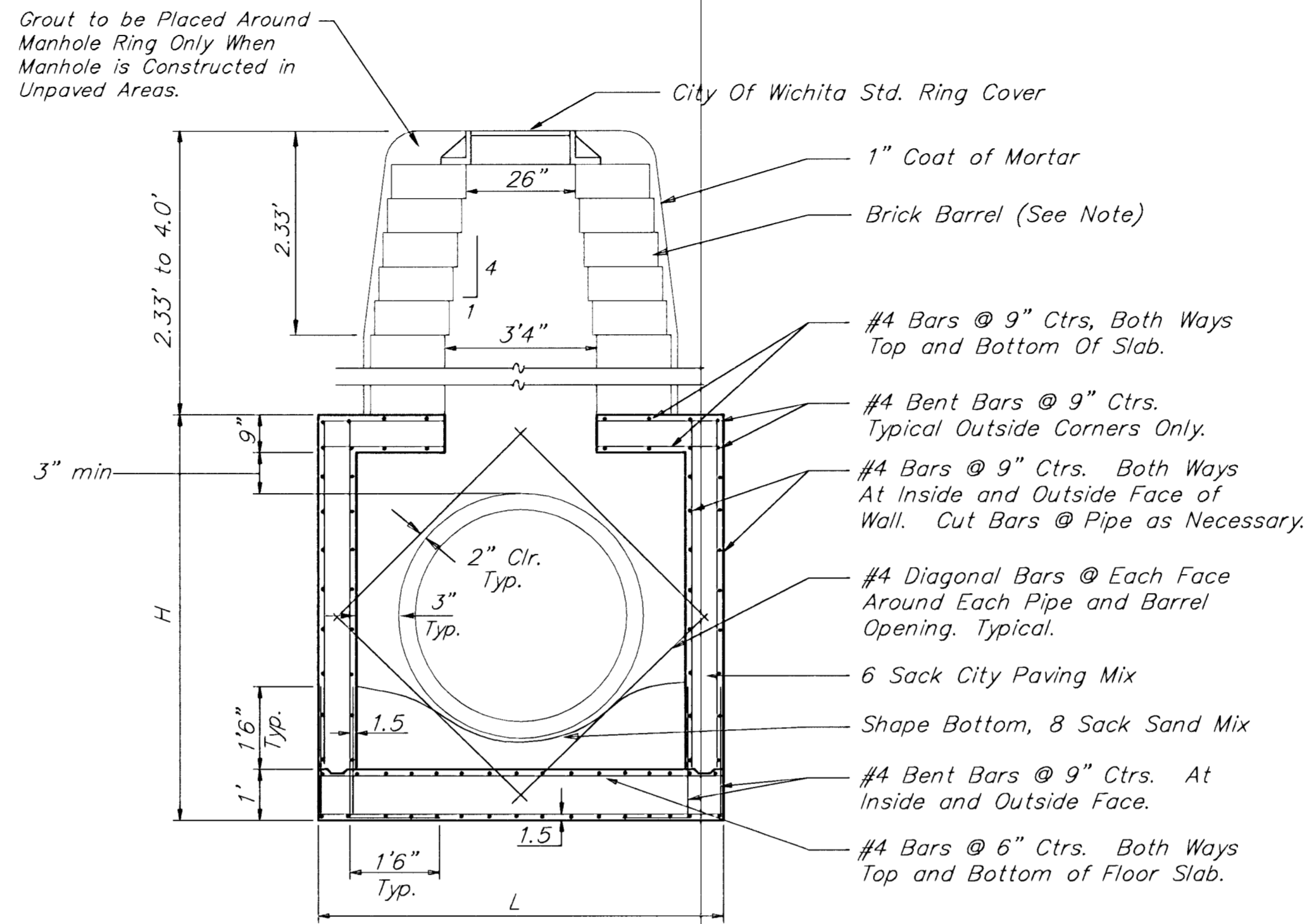
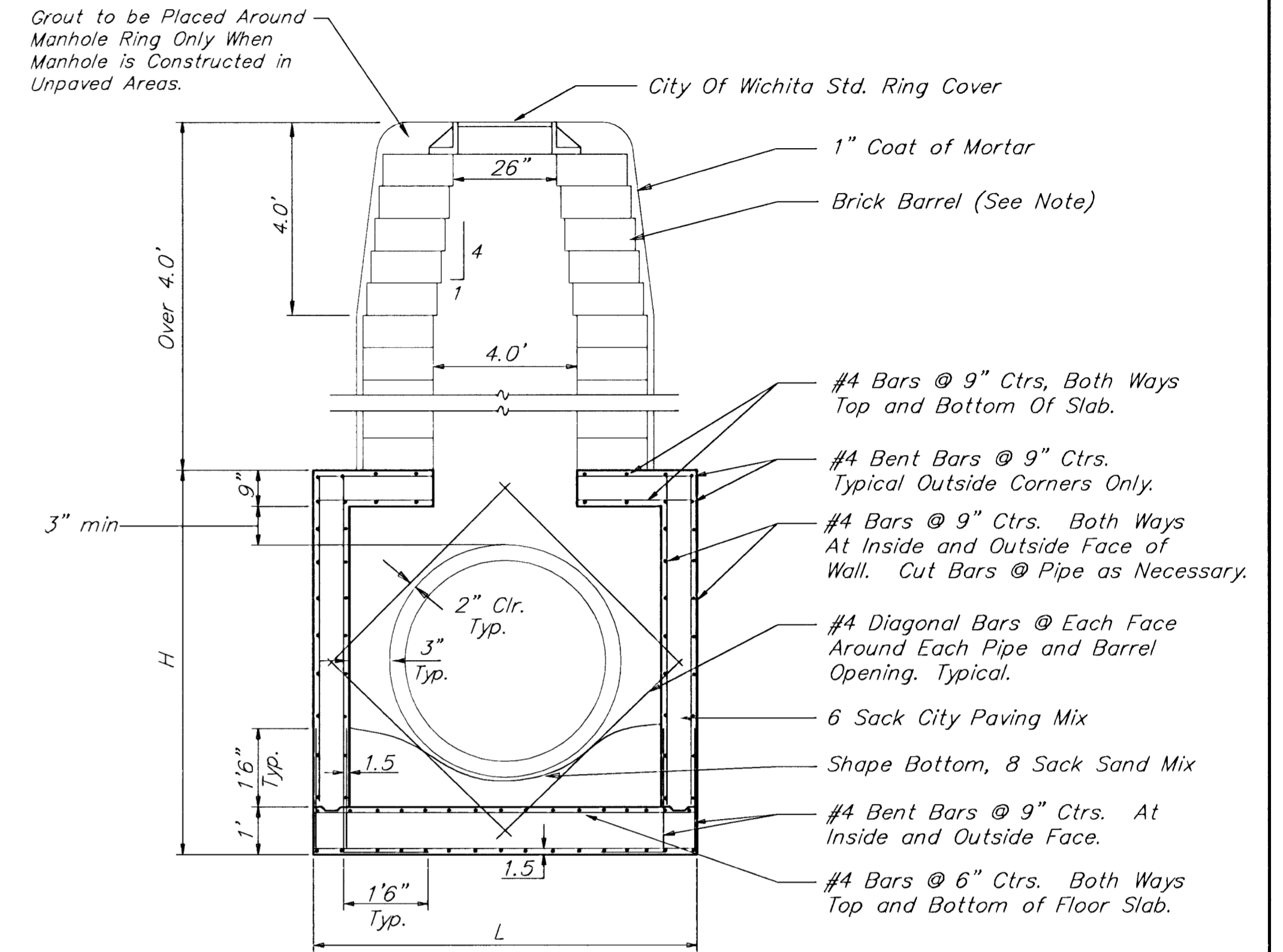


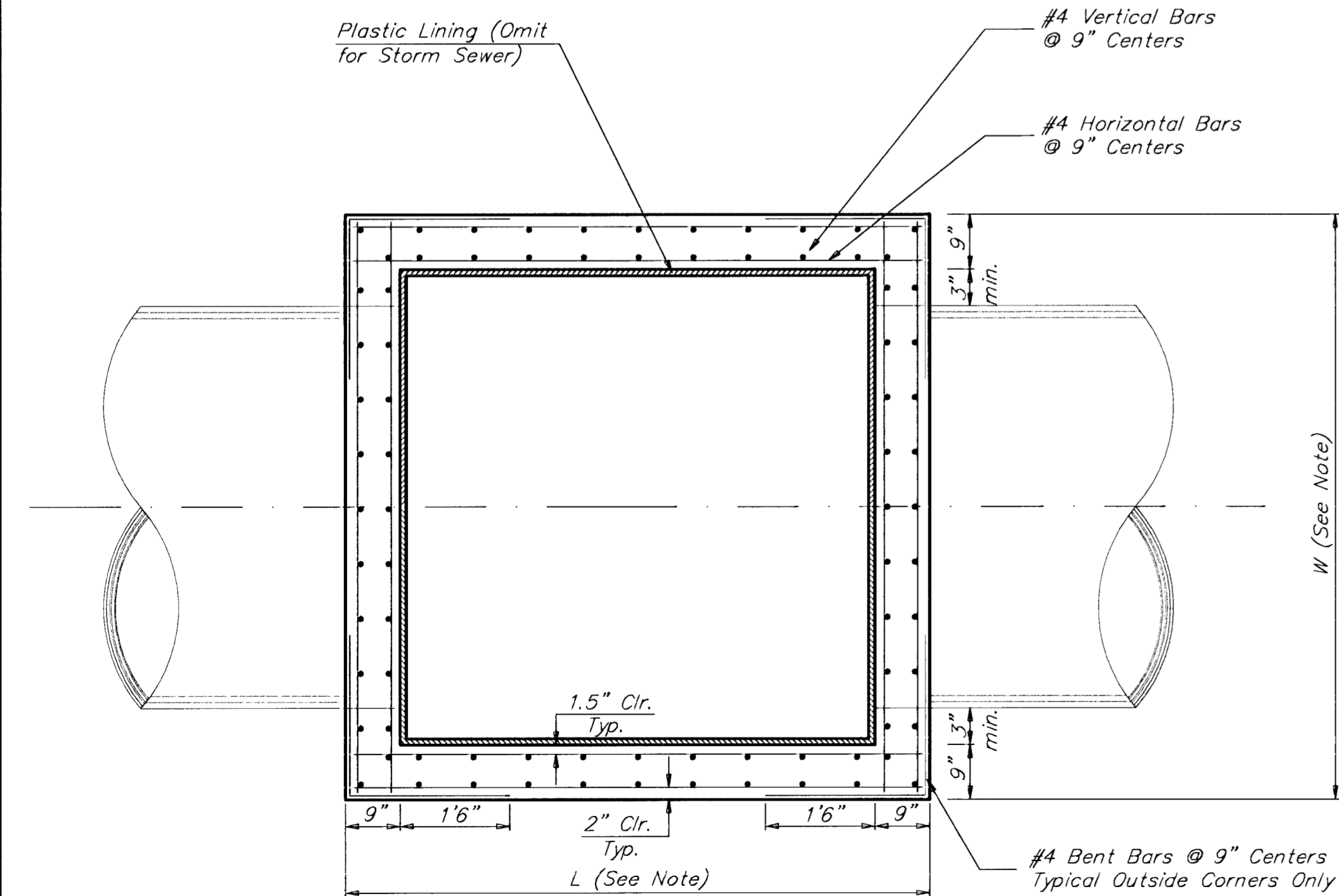
**REINFORCED CONCRETE MANHOLE**  
DEPTH OF STACK: 0' TO 2.33'



**REINFORCED CONCRETE MANHOLE**  
DEPTH OF STACK: 2.33' TO 4.0'



**REINFORCED CONCRETE MANHOLE**  
DEPTH OF STACK: OVER 4.0'

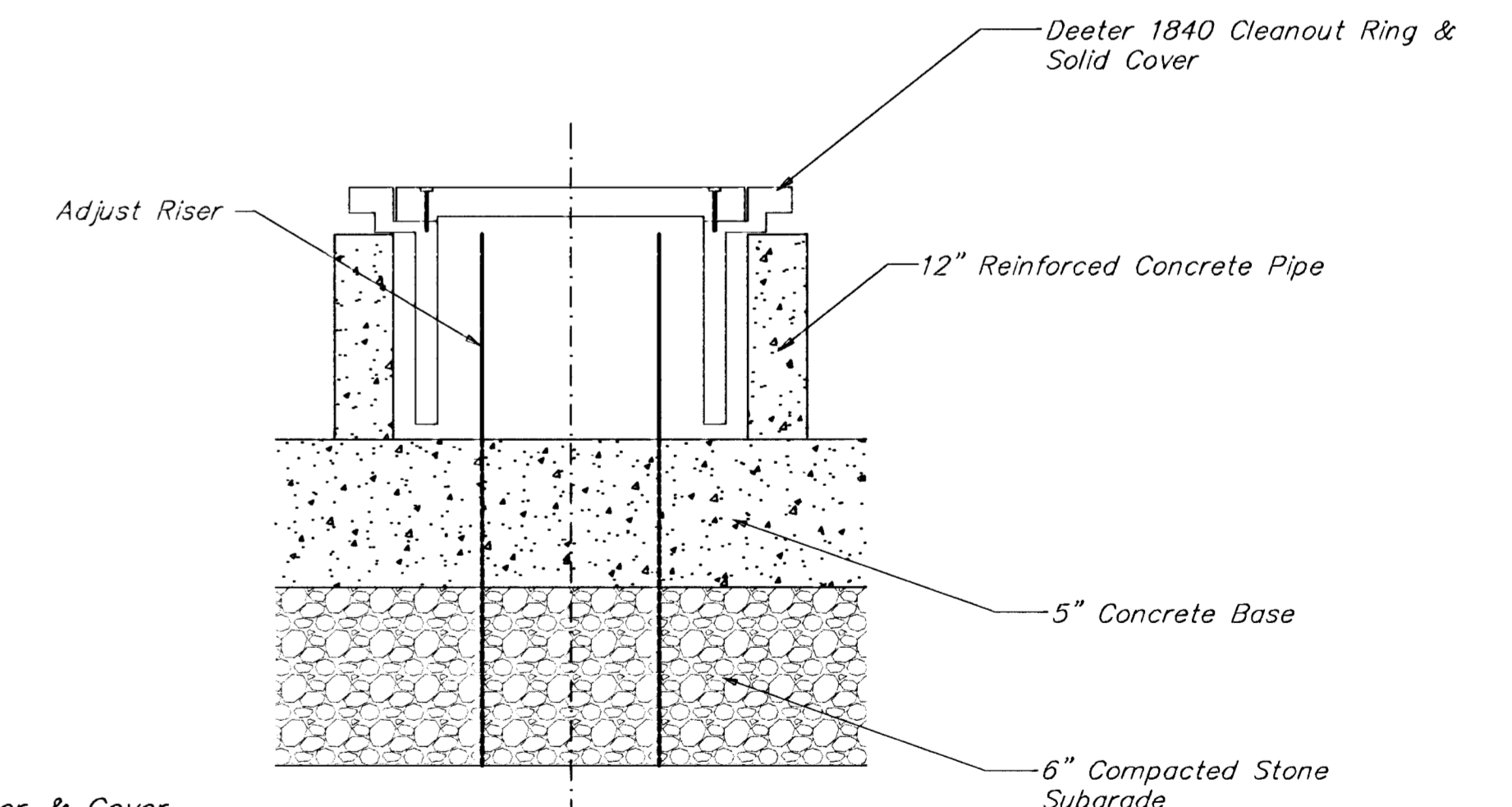


TOP VIEW

**Notes:**

Brick barrels less than 16' deep shall have 8" walls except when located within public street or alley pavement; then the wall shall be 12". Brick barrels more than 16' deep shall have 12" walls. The "L" and "W" dimensions shall be a minimum of 5'6" for brick barrels with 8" walls and 6'2" for brick barrels with 12" walls when the brick barrels are over 4' in height. Completed manhole shall be without leaks and watertight.

Concrete wall thickness shown represents manhole type located within traffic bearing areas. Manhole wall, base, & top dimensions may be reduced when manholes are not subject to vehicle loads. Contractor shall be required to submit shop drawings to the Engineer for approval.



**Note:**

Remove Existing Canister & Cover. Extend Blow Off Riser. Install 12" Reinforced Concrete Pipe Over 5" Concrete W/ 6" Compacted Stone Subgrade.

**SPECIAL BLOWOFF ASSEMBLY COVER**

PROJECT NUMBER City Of Wichita		SHEET NAME RCMH		ENGINEERING DIRECTORY F:\CENTRAL\DETAILS		CAPITAL IMPROVEMENT PROJECT		<b>BAUGHMAN COMPANY, P.A.</b> ENGINEERING, SURVEYING, & PLANNING 318-282-7271 • 315 ELLIS • WICHITA, KANSAS 67211	SHEET 18 OF 42
DESIGN C.O.W.	DRAWN STAFF	APPROVED	DATE FEB 2002	SCALE NONE	BAUGHMAN NO 99-09-E463	<b>RCMH &amp; BLOWOFF ASSM COVER</b> CENTRAL AVENUE - TYLER TO WOODCHUCK			