

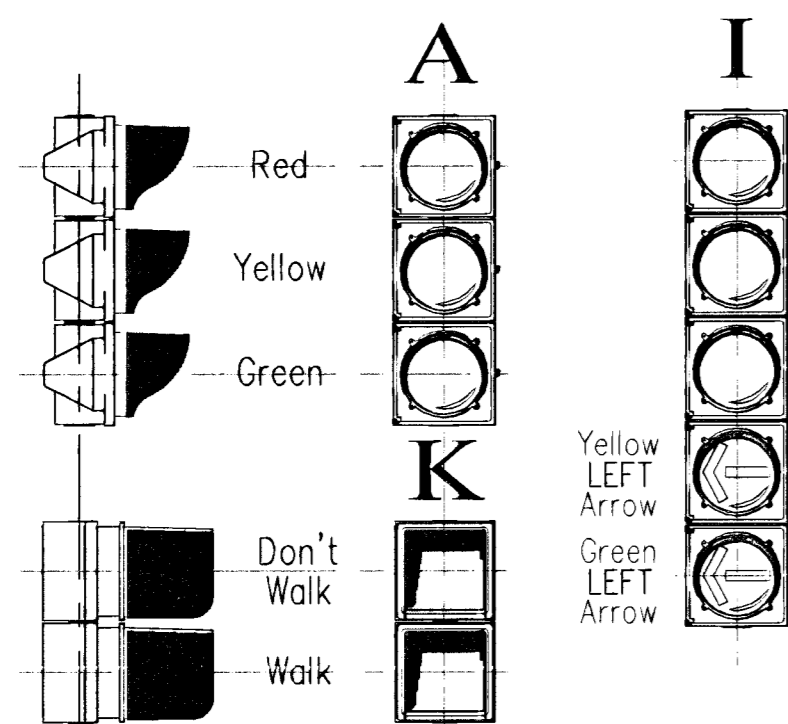
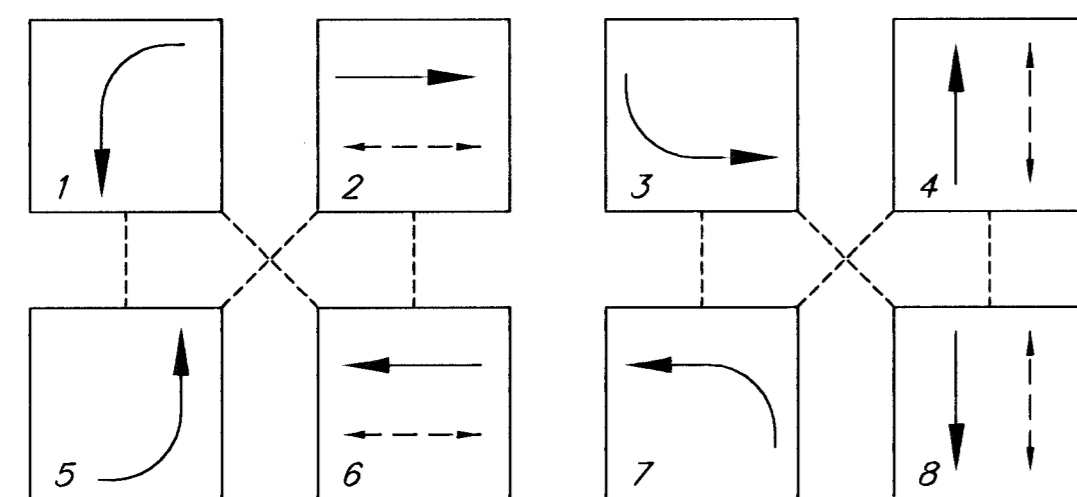
LEGEND

- Light Pole
- Power Pole
- Guard Post
- Traffic Sign
- Pedestrian Signal
- Service Box
- Controller
- Signal Head
- New Conduit
- Junction Box
- Video Detection Camera (VDC)
- Vehicle Detection Area

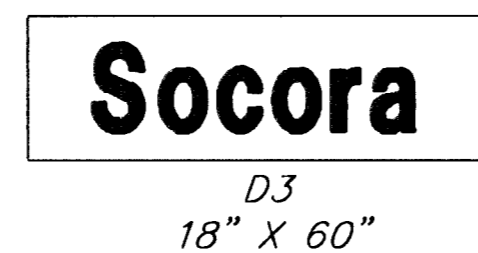
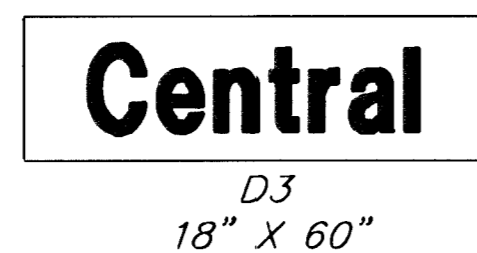
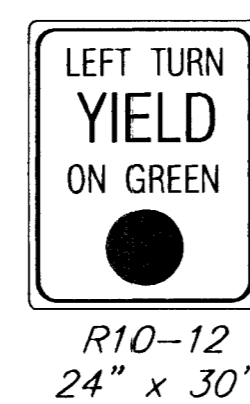
VEHICLE DETECTOR SUMMARY

LOOP #	SIZE (W X L)	PHASE CALLED
8	6 X 9	8
7	6 X 9	8
6	6 X 50	3
2	6 X 50	1
3	28 X 6	6
4	28 X 6	6
5	28 X 6	6
9	6 X 50	5
10	28 X 6	2
11	28 X 6	2
12	28 X 6	2
1	20 X 6	4

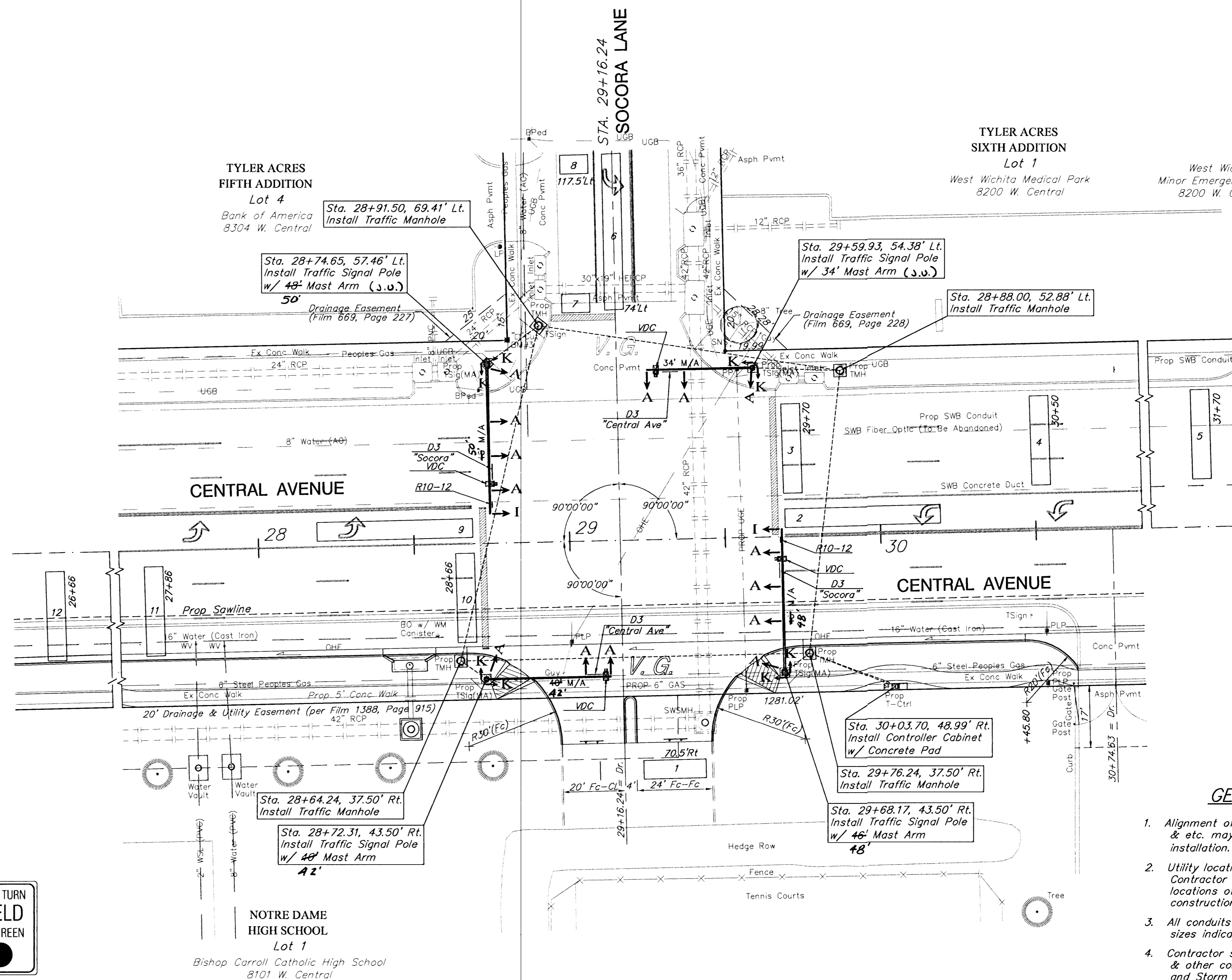
PHASE DIAGRAM



SIGNAL HEADS



TRAFFIC SIGNS



GENERAL NOTES

1. Alignment of service boxes, traffic signal poles, & etc. may require adjustment to facilitate installation. Subject to Engineer's approval.
2. Utility locations shown are approximate. Contractor shall be responsible for verifying locations of all underground utilities prior to construction.
3. All conduits shall be Rigid Galvanized Conduit of sizes indicated on the Wiring Diagram.
4. Contractor shall coordinate conduit placement & other construction incidentals with Street and Storm Sewer Improvements for Central Avenue - Tyler to Woodchuck.
5. Traffic Signal Timing shall be performed by the City of Wichita.

SCALE: 1" = 20'

PROJECT NUMBER City of Wichita		SHEET NAME SigSoc		ENGINEERING DIRECTORY F:\CENTRAL\TRAFFIC		CAPITAL IMPROVEMENT PROJECT CENTRAL AVENUE TYLER TO WOODCHUCK		BAUGHMAN COMPANY, P.A. ENGINEERING, SURVEYING, & PLANNING 318-282-7271 • 315 ELLIS • WICHITA, KANSAS 67211		SHEET 23 OF 42
DESIGN JFB/JMN	DRAWN STAFF	APPROVED	DATE FEB 2002	SCALE NOTED	BAUGHMAN NO 99-09-E463	CENTRAL AVE - SOCORA LN INTERSECTION SIGNALIZATION PLAN				