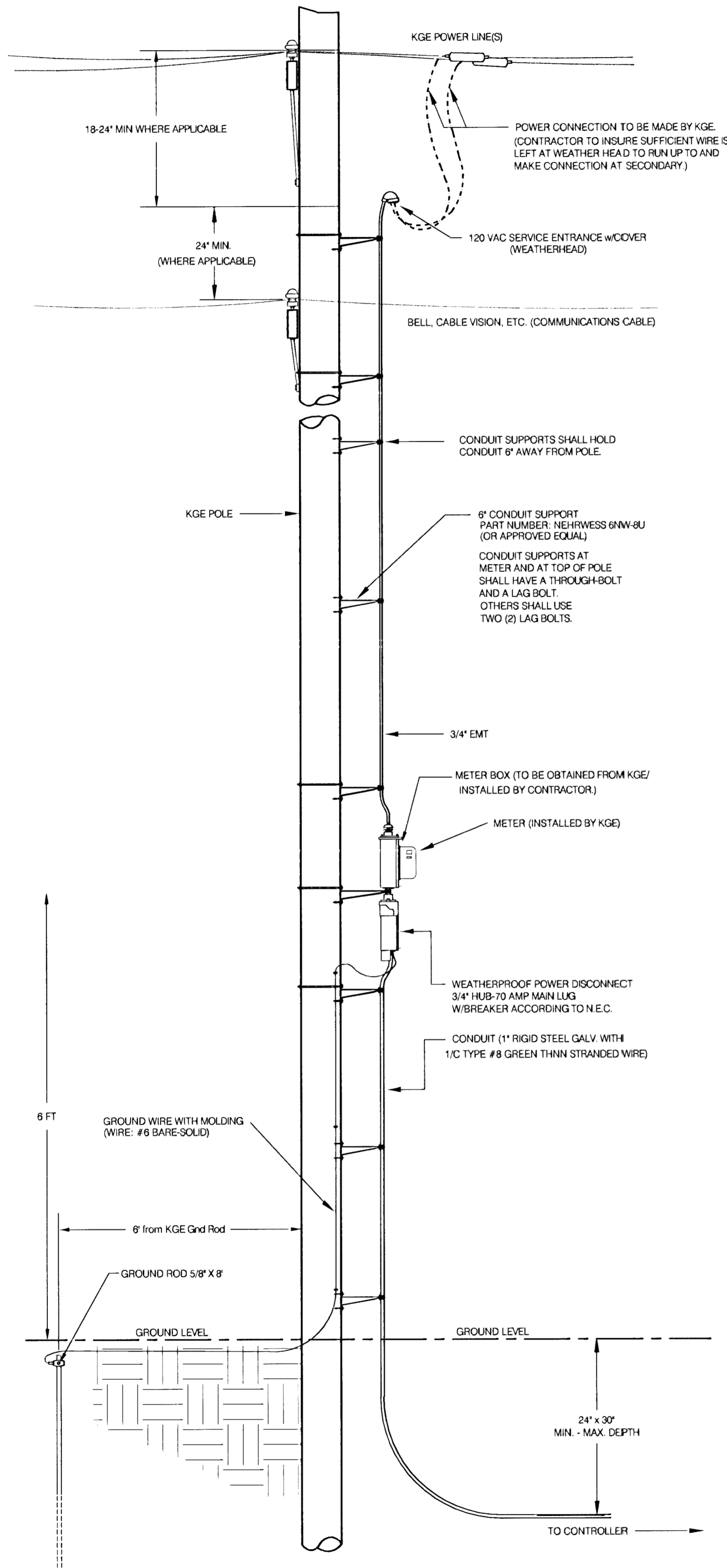
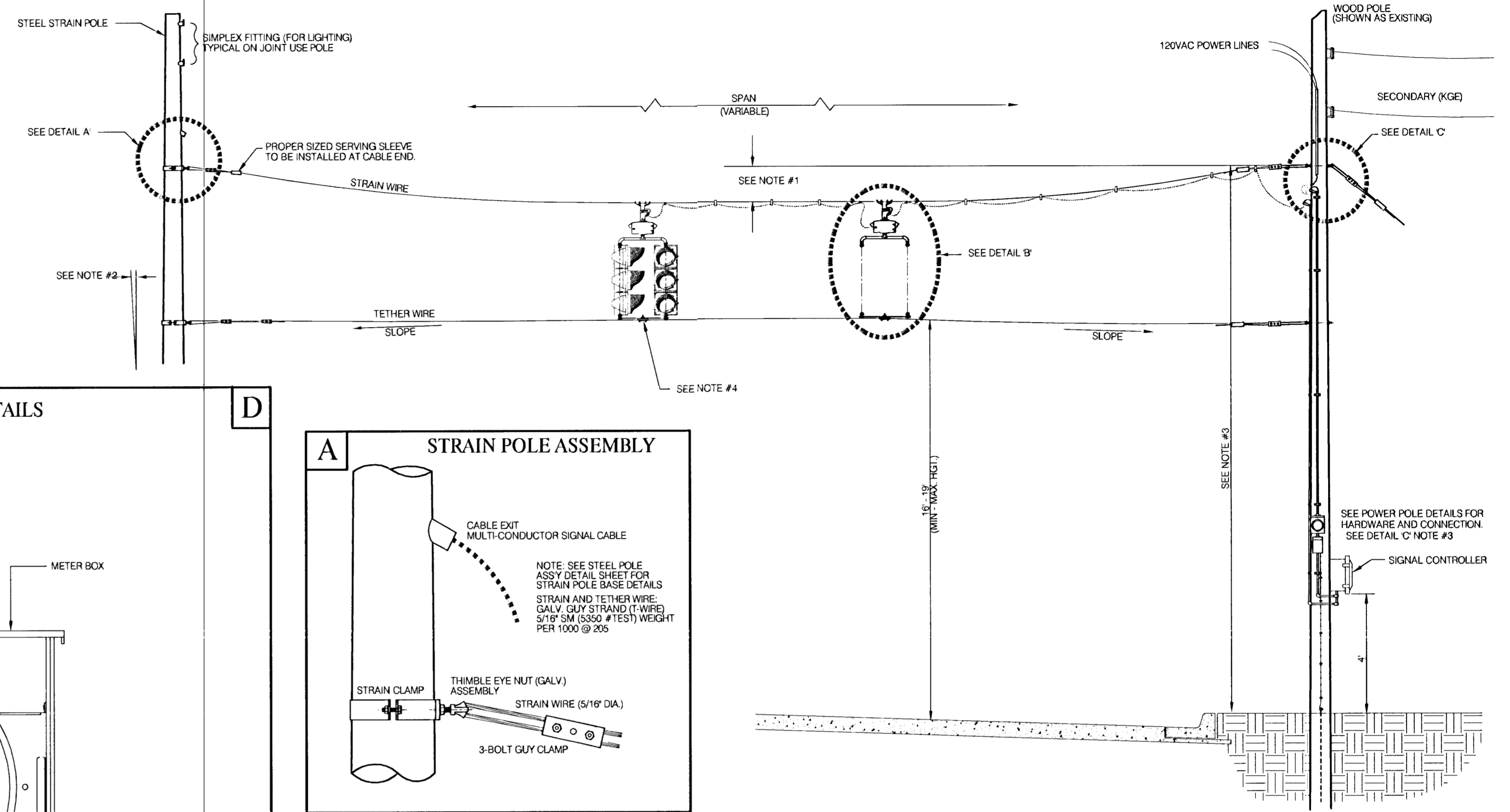


POWER POLE DETAILS

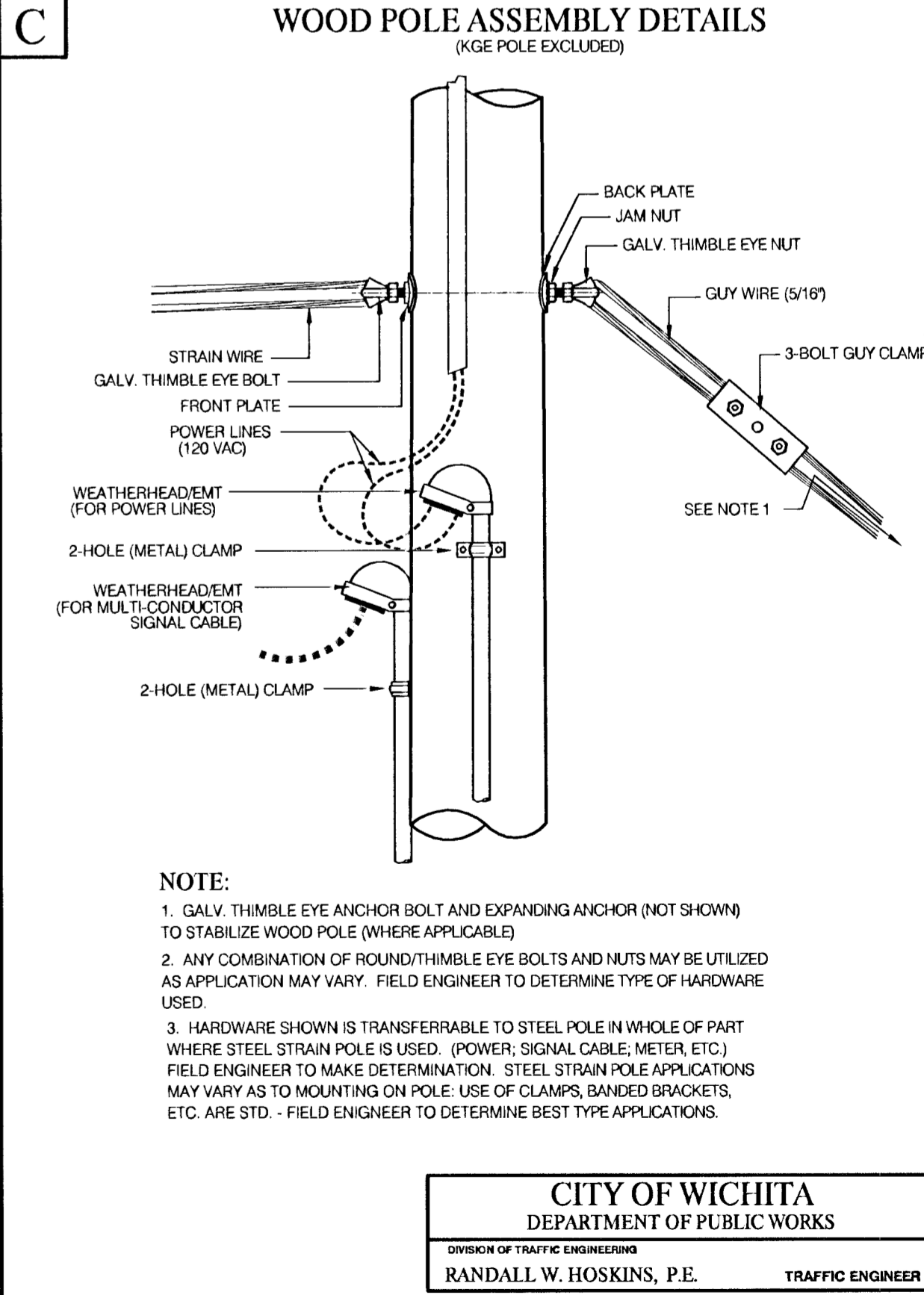
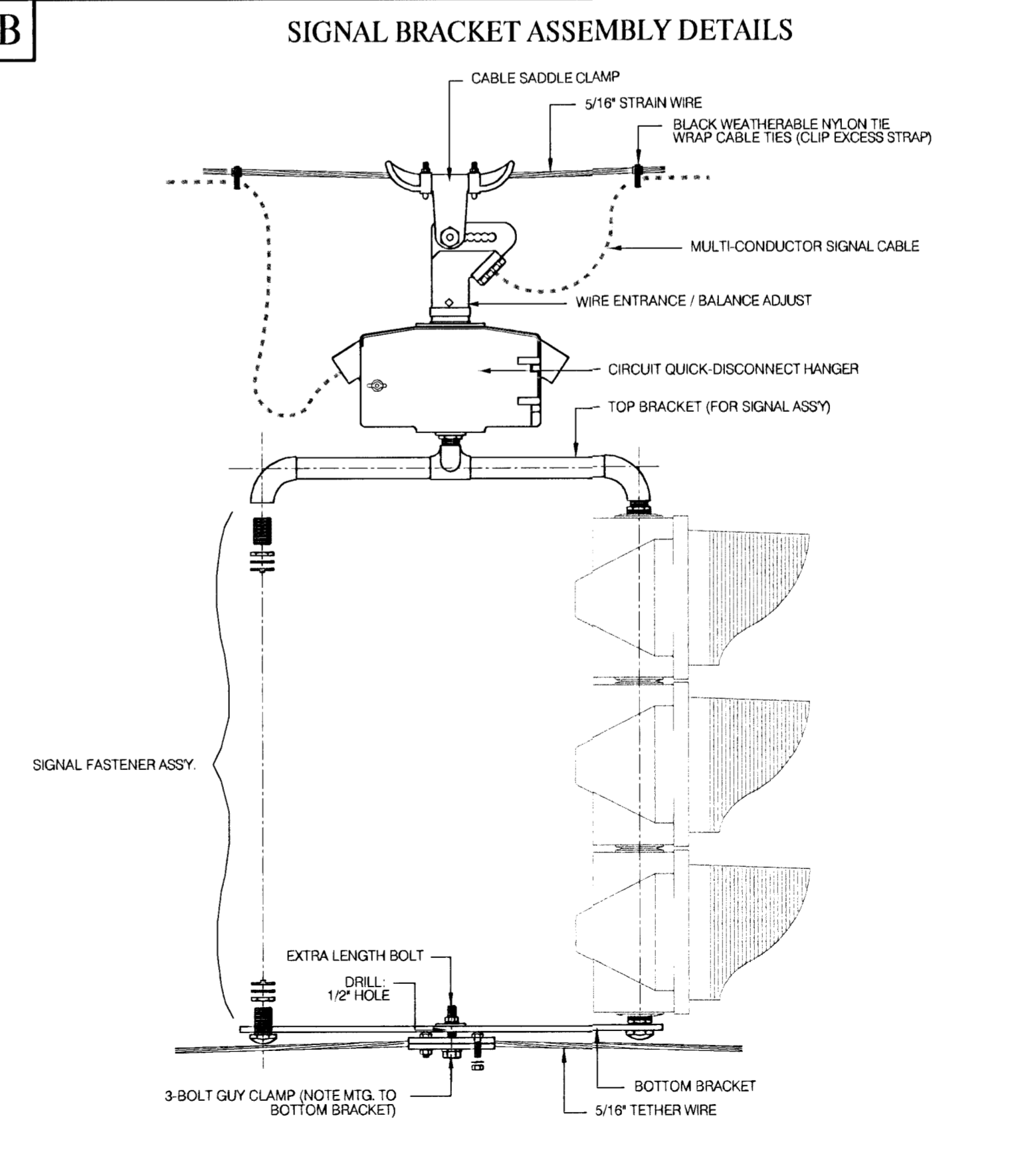
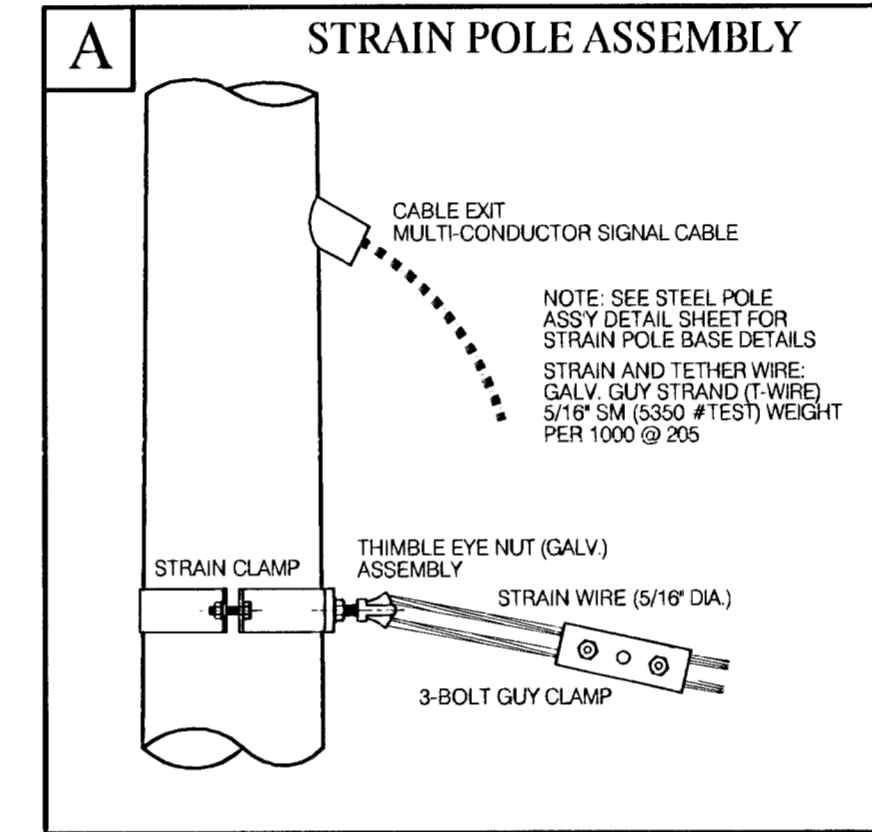
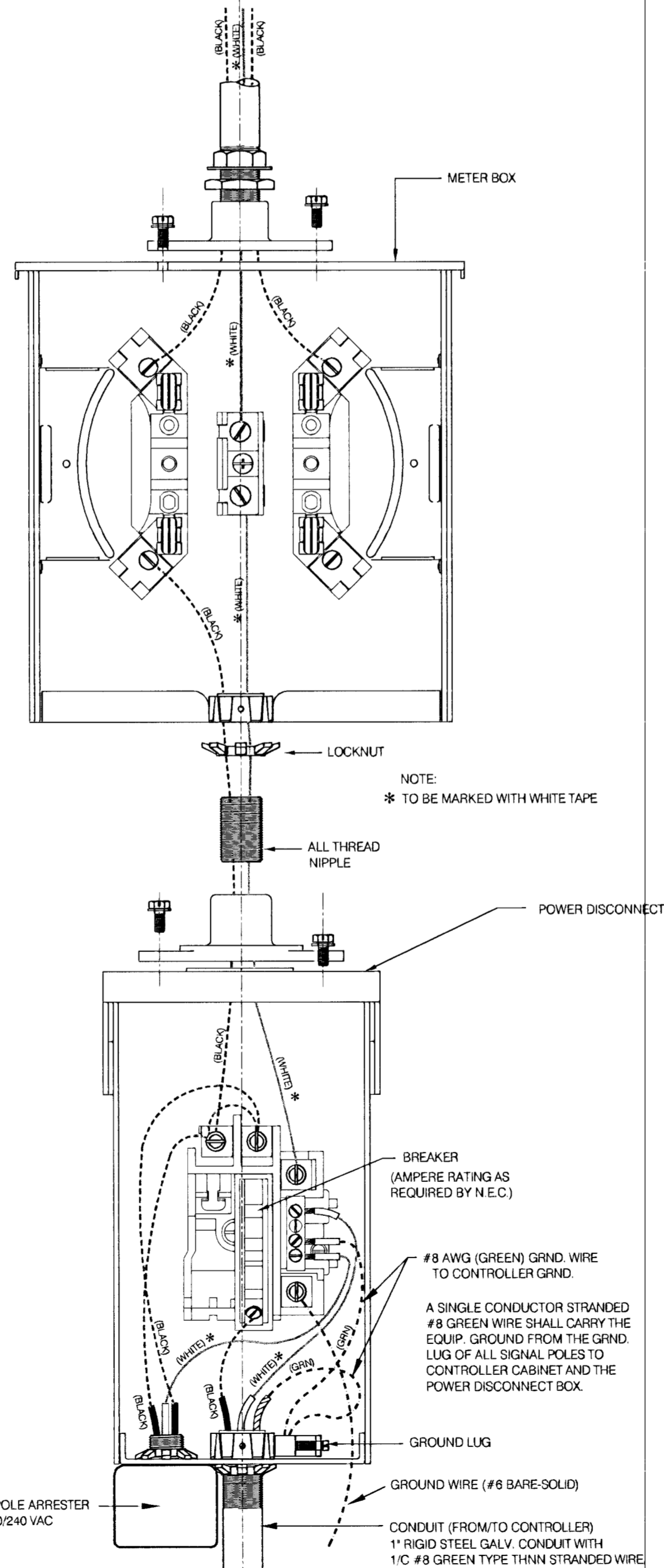


SPANWIRE ASSEMBLY DETAILS

1. MAX. SAG = 5% OF SPAN.
2. STANDARD BACKRAKE = 1.5°
3. HEIGHT OF STRAIN WIRE HOOK-UP TO BE DETERMINED BY FIELD ENGINEER. TRAFFIC SIGNAL CABLE TO BE SECURED TO STRAIN (SPAN) WIRE WEATHERABLE NYLON CABLE HANGERS (12" CTR.) DETAIL 'B'
4. TETHER CLAMP TO BE DESIGNED TO RELEASE UNDER HIGH WIND LOAD TO PERMIT SIGNAL 'FREE SWING'.



METER BOX & POWER DISCONNECT DETAILS



REV. DATE	COMMENTS	BY
2/02	Conduit Support 1" and Rod # 1 1/2"	SB

POWER-#6 AWG BLACK
NEUTRAL-#6 AWG WHITE
GROUND-#8 AWG GREEN

PROJECT NUMBER City Of Wichita		SHEET NAME PPSP-DIL		ENGINEERING DIRECTORY CENTRAL TRAFFIC	
DESIGN SONNY	DRAWN STAFF	APPROVED	DATE FEB 2002	SCALE NONE	BAUGHMAN NO 99-09-E463

CAPITAL IMPROVEMENT PROJECT
**REVISED POWER POLE & SPAN POLE
STANDARD DETAILS**
CENTRAL AVENUE - TYLER to WOODHUCK

CITY OF WICHITA
DEPARTMENT OF PUBLIC WORKS
DIVISION OF TRAFFIC ENGINEERING
RANDALL W. HOSKINS, P.E. TRAFFIC ENGINEER

BAUGHMAN COMPANY, P.A.
ENGINEERING, SURVEYING, & PLANNING
318-282-7271 • 315 ELLIS • WICHITA, KANSAS 67211

SHEET **28**
OF **42**