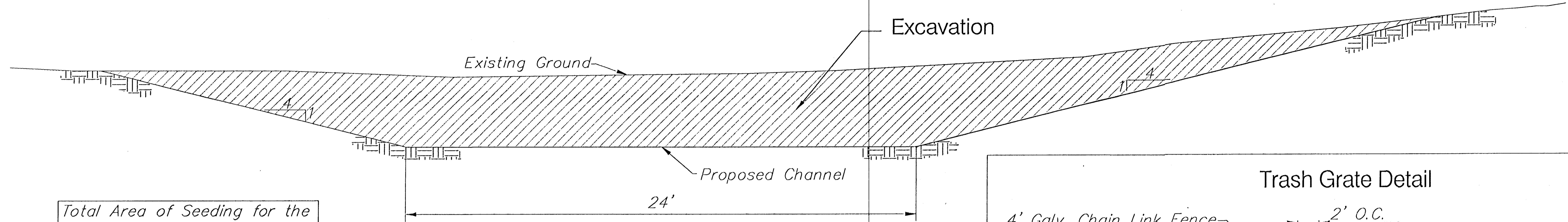


CHANNEL DETAIL

Inside KTA Fence

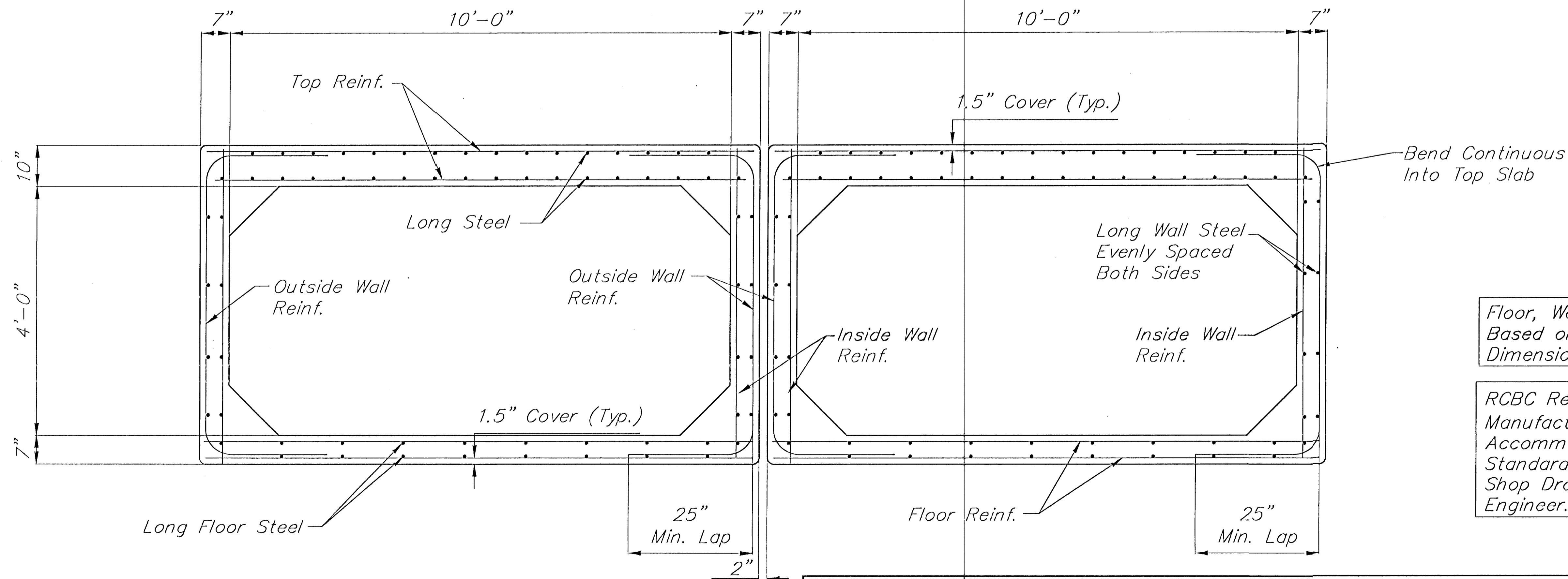
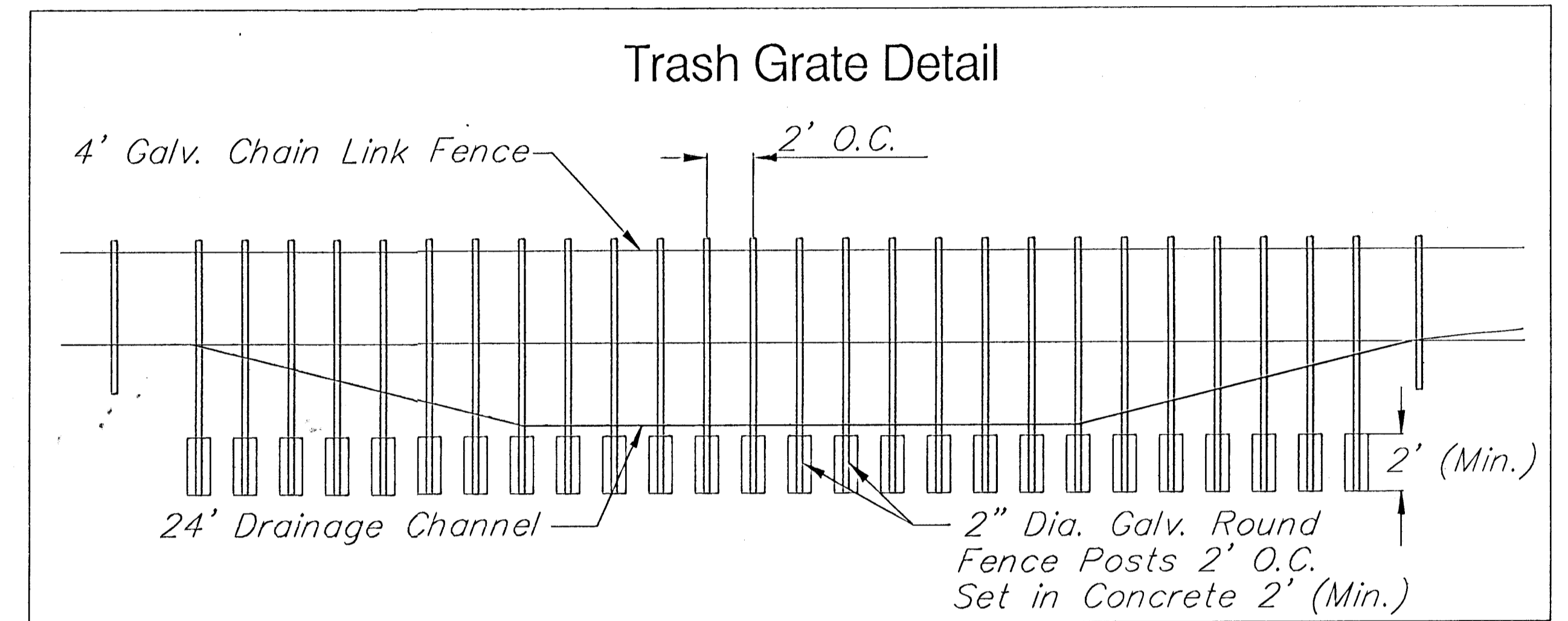


Total Area of Seeding for the Project is 9750± Sq. Yds.

For Information Only

The Contractor shall reseed the areas disturbed by construction according to Boeing Environmental Group Specifications. Cost to be INCIDENTAL to "Site Clearing and Restoration."

Trash Grates are to be Constructed Through Channel Openings in the KTA Fence. Cost to be INCIDENTAL to "Site Clearing and Restoration".



Floor, Walls, & Top Dimensions are Based on Standard Precast Dimensions

RCBC Reinforcement Per Precast Manufacturer's Design. Design to Accommodate ASTM C789 Standards. Manufacturer to Submit Shop Drawings for Review by Engineer.

PROJECT NUMBER 472-76-245-83324	SHEET NAME Detail	ENGINEERING DIRECTORY F:\Hydraulic\KTA
DESIGN JFB/TPV	DRAWN TPV	APPROVED JFB
DATE FEB 2001	SCALE NONE	BAUGHMAN NO 99-09-E453

CAPITAL IMPROVEMENT PROJECT
**PROPOSED KTA CHANNEL
and RCBC DETAILS**
HYDRAULIC AVENUE PAVING - INCIDENTAL DRAINAGE IMPROVEMENTS - PHASE 1

BAUGHMAN COMPANY, P.A.
ENGINEERING, SURVEYING, & PLANNING
318-262-7271 • 315 ELLIS • WICHITA, KANSAS 67211

SHEET 4
OF 36