

# SEWER LOWERING DETAILS - ALTERNATE NO. 1

SCALE: None

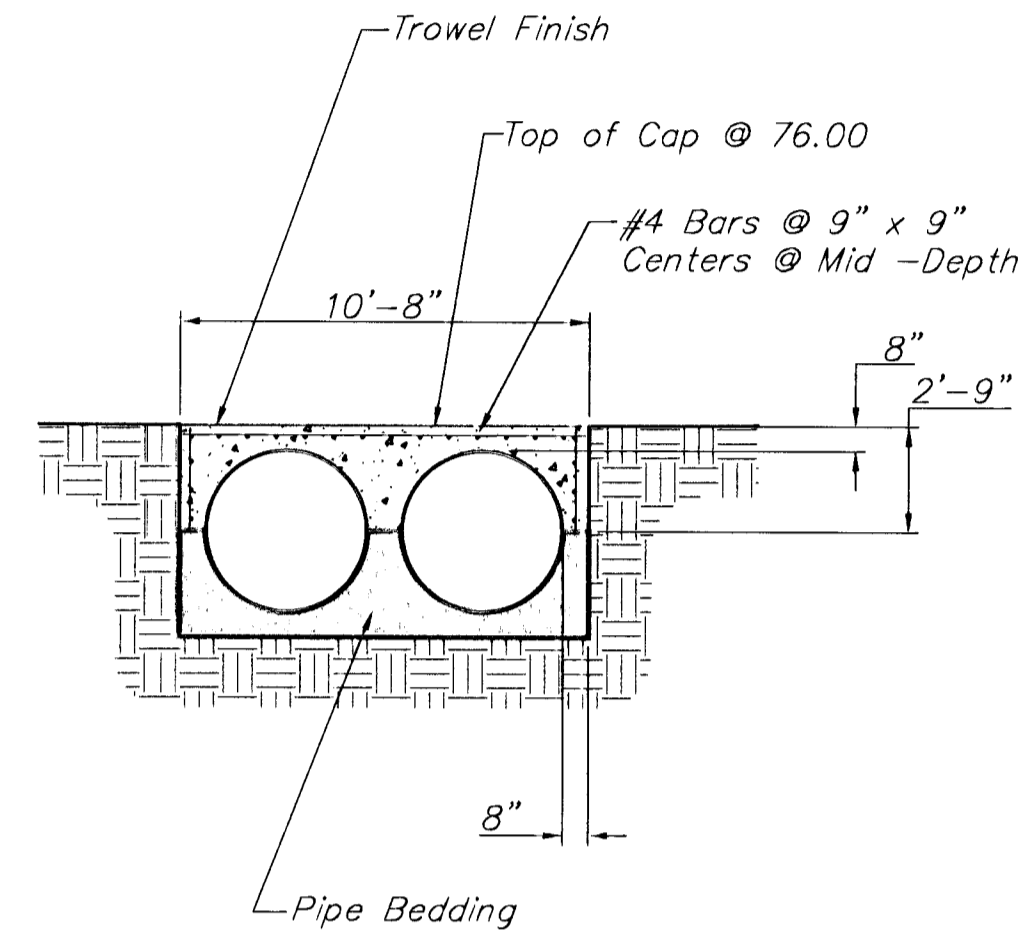
Notes:  
Construct special concrete pumping structure around existing pipe. Tightly seal all around pipe and remove top of pipe as required to install temporary plug into pipe. Set up pump of sufficient size and capacity to bypass pump flow around pipe removal area.

Sewage flow may be stopped for a maximum of 24 hours to allow for pipe top removal, plug installation and pump setup.

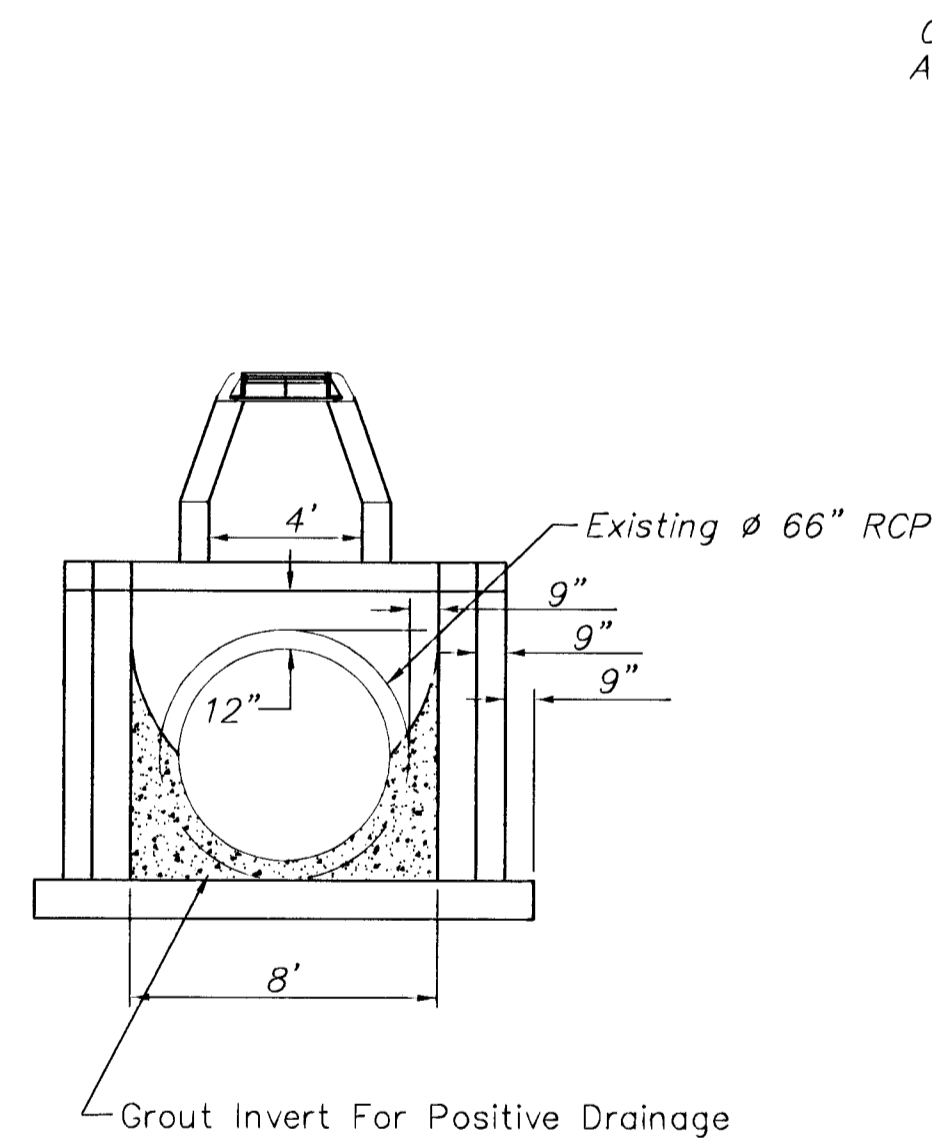
Top of pumping structure is to be covered to prevent spillage during pumping and plugging operation.

Concrete Top slab is to be set in place, sealed and buried after temporary plug is removed.

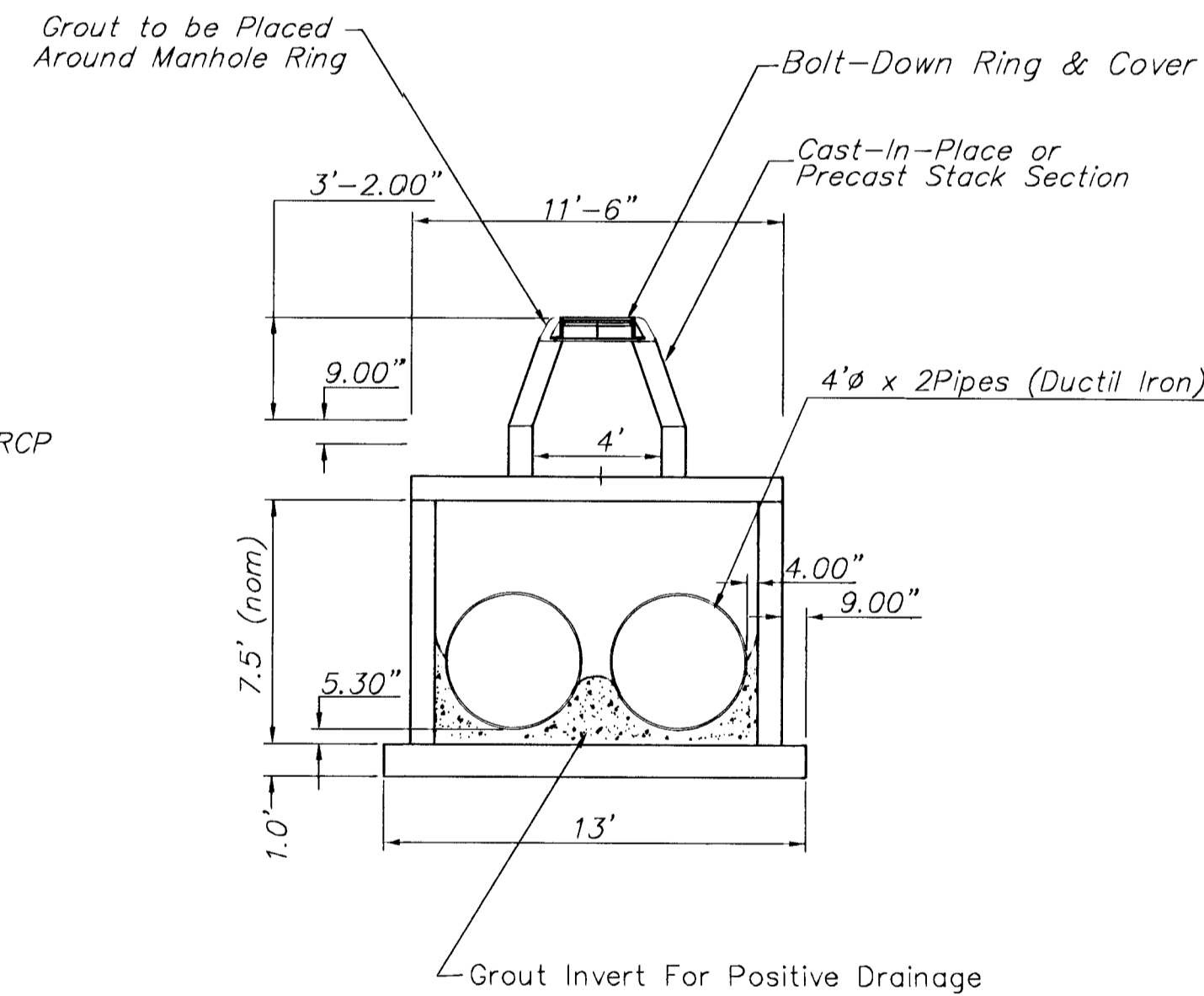
See Sheet No. 32 for additional Rein. Conc. Manhole Details.



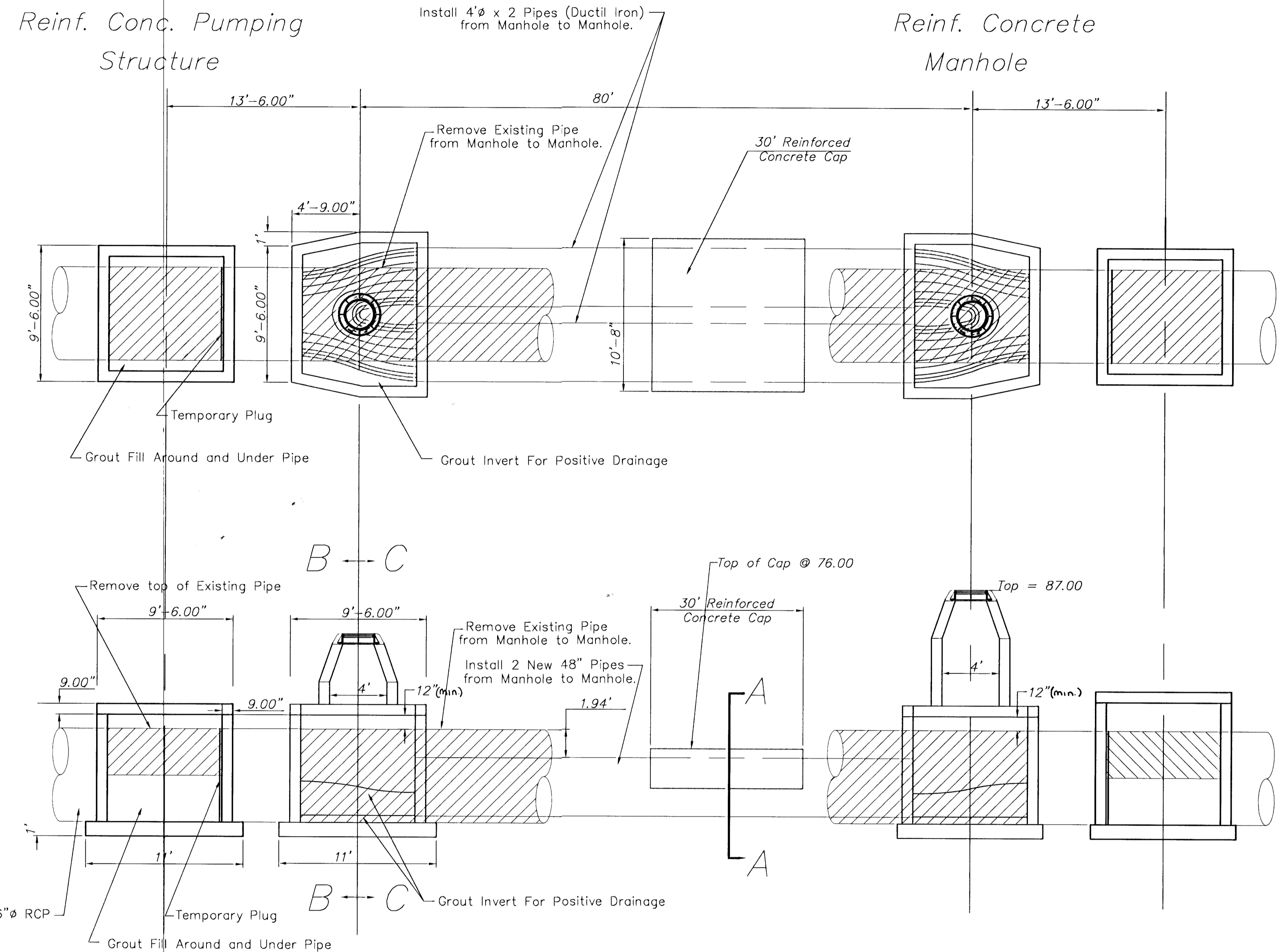
Section A-A



Section B-B  
Looking Towards Existing Pipe



Section C-C  
Looking Towards New Pipes



Gain 29" by using (2) 48" Ductile Iron Pipe with Bottom of all pipes at same elevation.

|                                    |              |                      |                  |   |                           |   |  |   |                        |
|------------------------------------|--------------|----------------------|------------------|---|---------------------------|---|--|---|------------------------|
| PROJECT NUMBER<br>472-76-245-83324 |              | SHEET NAME<br>SIPHON |                  | ENGINEERING DIRECTORY<br>F:\Hydraulic\KTA |                           | CAPITAL IMPROVEMENT PROJECT<br>66" SANITARY SEWER<br>LOWERING DETAIL - OPTION 1<br>HYDRAULIC AVENUE PAVING - INCIDENTAL DRAINAGE IMPROVEMENTS - PHASE 1 |  | <b>BAUGHMAN COMPANY, P.A.</b><br>ENGINEERING, SURVEYING, & PLANNING<br>318-262-7271 • 315 ELLIS • WICHITA, KANSAS 67211 | SHEET<br>6<br>OF<br>36 |
| DESIGN<br>JFB/KK/JA                | DRAWN<br>TCA | APPROVED<br>JFB      | DATE<br>FEB 2001 | SCALE<br>None                             | BAUGHMAN NO<br>99-09-E453 |   |  |   |                        |