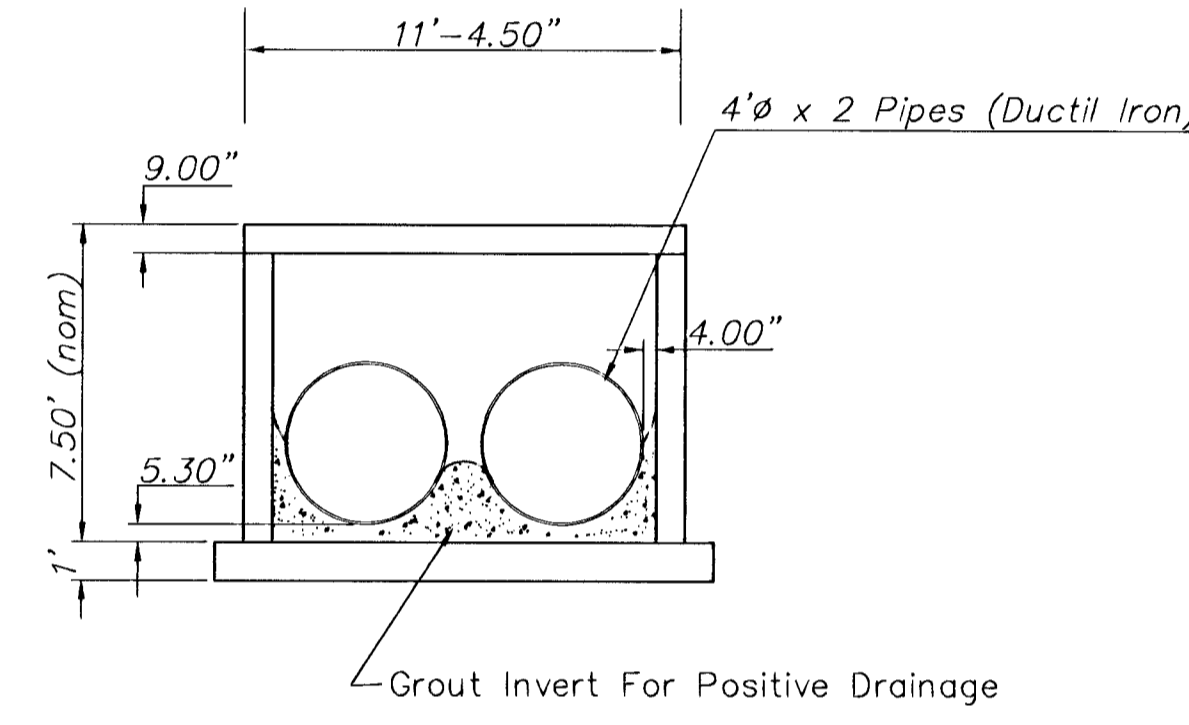


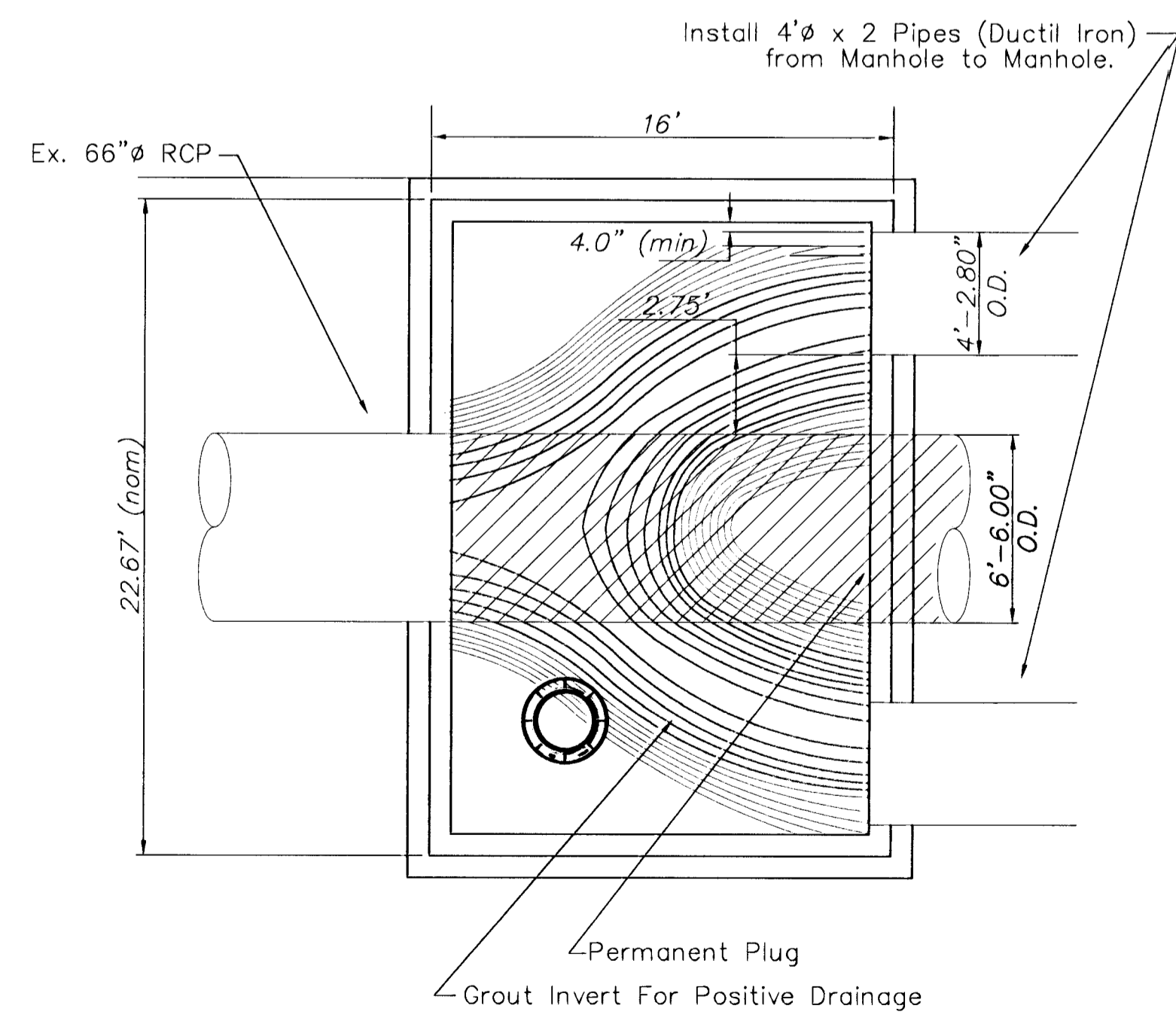
SEWER LOWERING DETAILS - ALTERNATE NO. 2 & 3



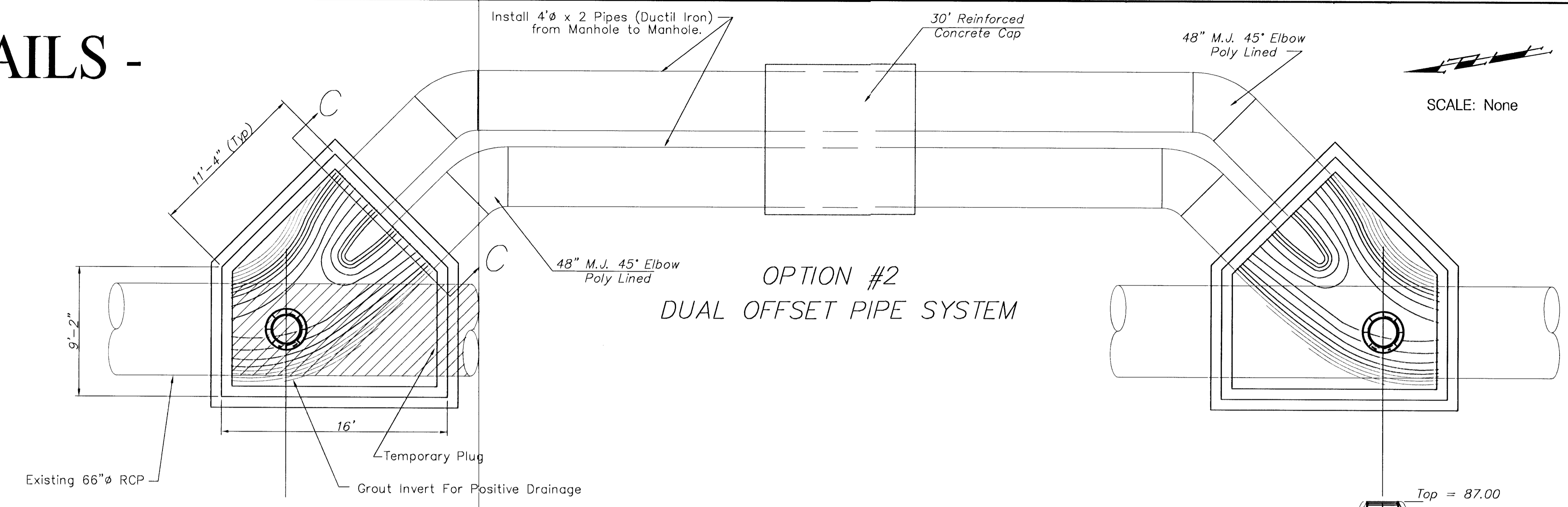
SCALE: None



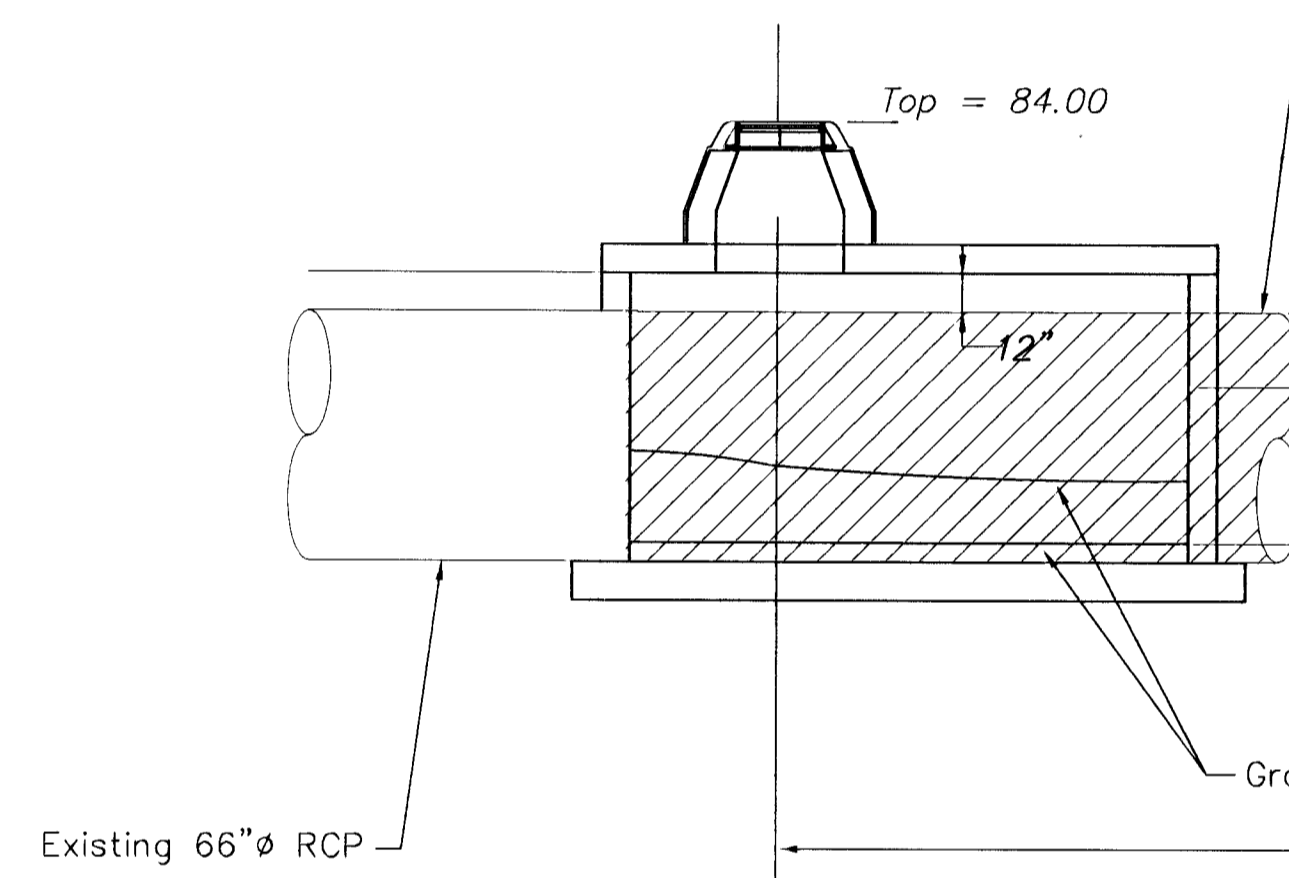
Section C-C
Looking Towards New Pipes



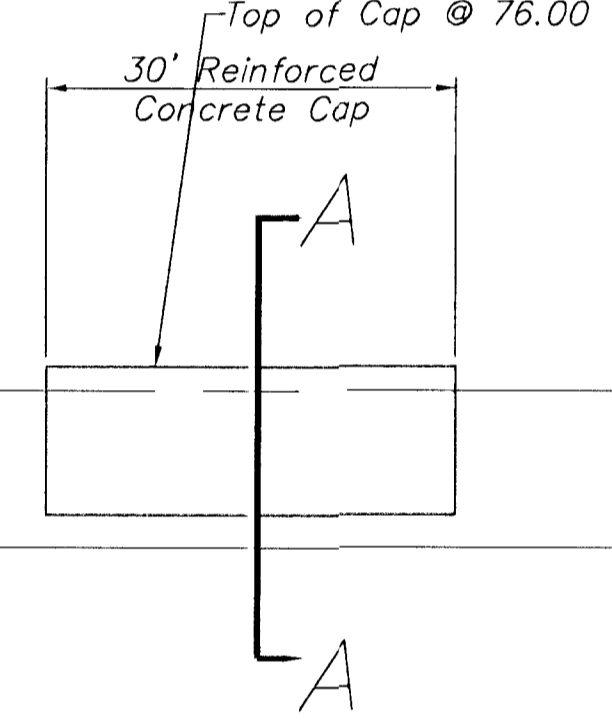
OPTION #3
SYMMETRICAL OFFSET PIPE SYSTEM



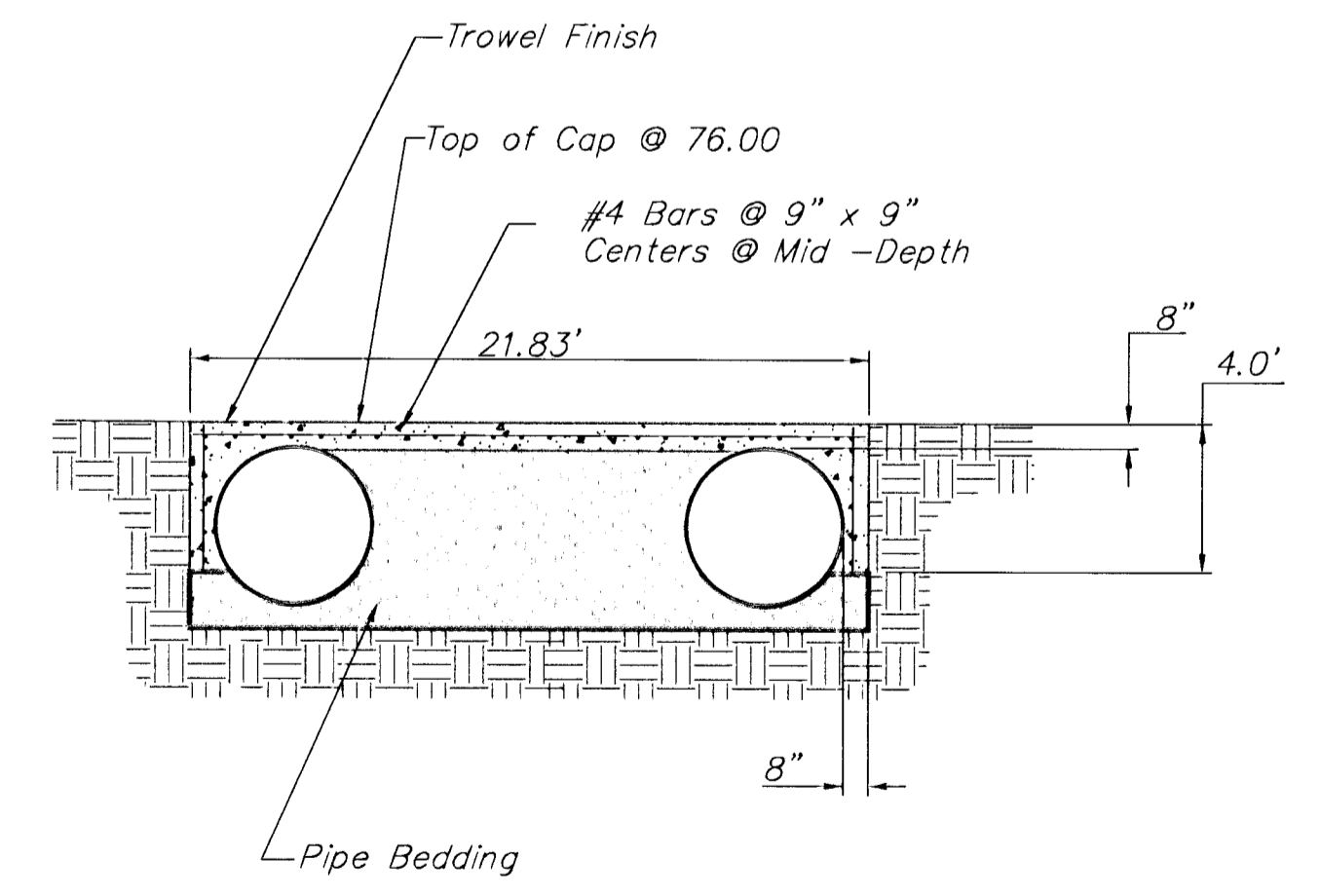
OPTION #2
DUAL OFFSET PIPE SYSTEM



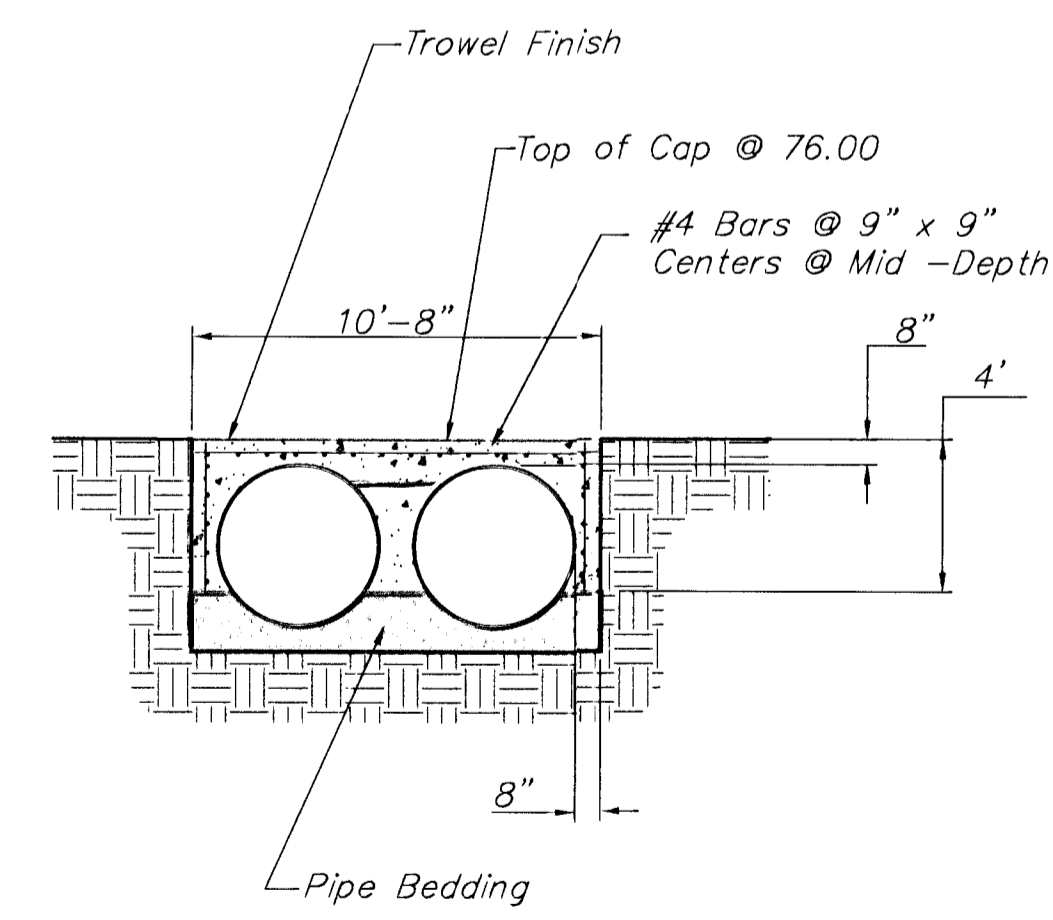
Option #2
Reinf. Concrete
Manhole



Option #2
Reinf. Concrete
Manhole



Section A-A
For Option #3



Section A-A
For Option #2

Note:
Construct Reinforced Concrete Manhole & Install 48" D.I.P. Prior to Flow Shutdown. During Shutdown, Remove 66" RCP Through Structure, Seal Holes in Walls & Form Inverts. Sewage flow may be stopped for a maximum of 24 hours.

Concrete Top slab is to be set in place, sealed and buried after temporary plug is removed.

See Sheet No. 32 for additional Rein. Conc. Manhole Details.
All Ductile Iron Pipe to be Poly Lined.

| | | | | | | | | | | |
|------------------------------------|--------------|----------------------|------------------|---|---------------------------|--|--|--|--|--------------------------|
| PROJECT NUMBER 472-76-245-83324 | | SHEET NAME OFFSET | | ENGINEERING DIRECTORY F:\Hydraulic\KTA | | CAPITAL IMPROVEMENT PROJECT 66" SANITARY SEWER LOWERING DETAIL - OPTIONS 2 & 3 HYDRAULIC AVENUE PAVING - INCIDENTAL DRAINAGE IMPROVEMENTS - PHASE 1 | | BAUGHMAN COMPANY, P.A. ENGINEERING, SURVEYING, & PLANNING 318-262-7271 • 315 ELLIS • WICHITA, KANSAS 67211 | | SHEET 6-A OF 36 |
| DESIGN JFB/KK/JA | DRAWN TCA | APPROVED JFB | DATE FEB 2001 | SCALE None | BAUGHMAN NO 99-09-E453 | | | | | |