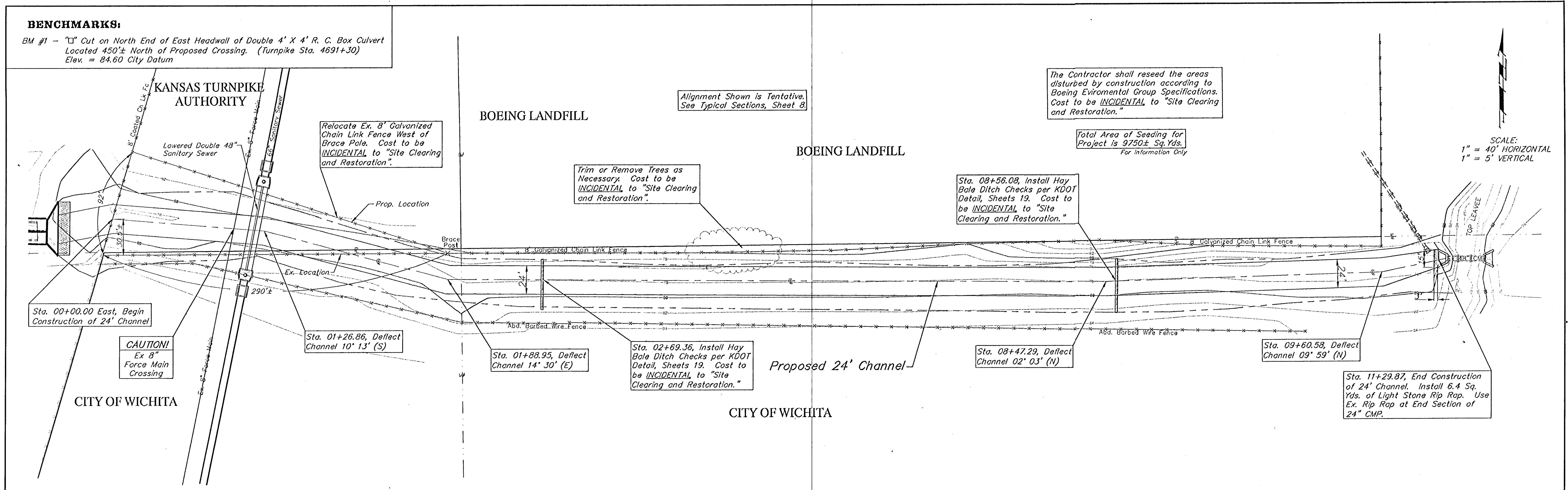


**BENCHMARKS:**

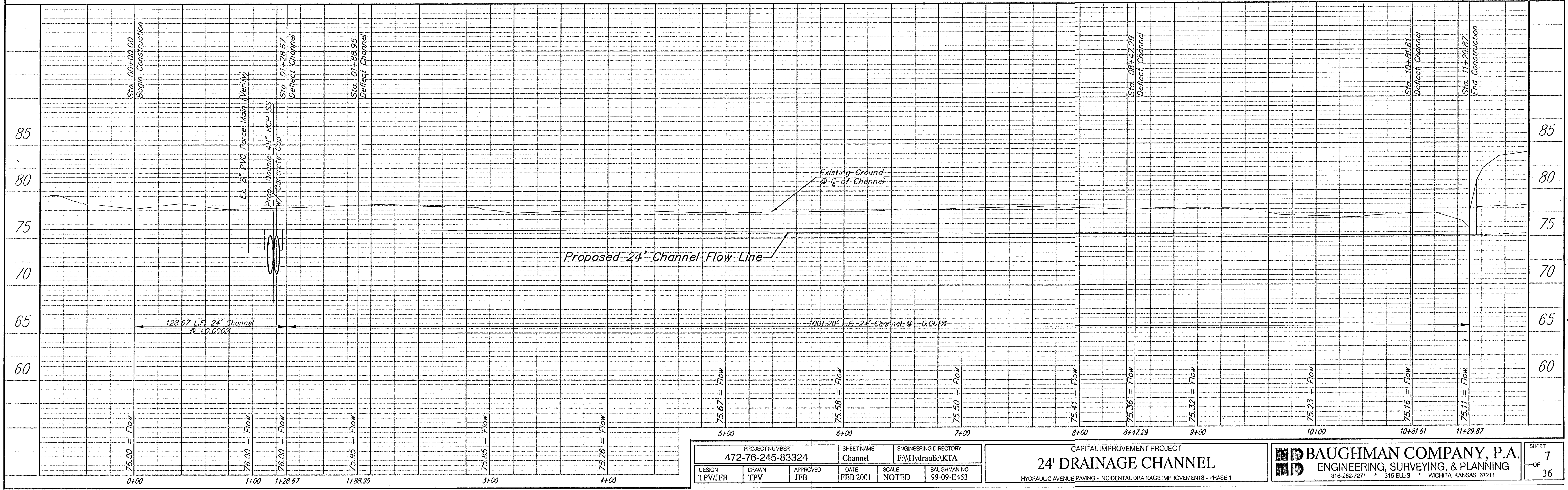
BM #1 - "C" Cut on North End of East Headwall of Double 4' X 4' R. C. Box Culvert Located 450± North of Proposed Crossing. (Turnpike Sta. 4691+30) Elev. = 84.60 City Datum



The Contractor shall reseed the areas disturbed by construction according to Boeing Environmental Group Specifications. Cost to be INCIDENTAL to "Site Clearing and Restoration."

Total Area of Seeding for Project is 9750± Sq.Yds. For Information Only

SCALE:  
1" = 40' HORIZONTAL  
1" = 5' VERTICAL



PROJECT NUMBER 472-76-245-83324		SHEET NAME Channel		ENGINEERING DIRECTORY F:\Hydraulic\KTA	
DESIGN TPV/JFB	DRAWN TPV	APPROVED JFB	DATE FEB 2001	SCALE NOTED	BAUGHMAN NO 99-09-1E453

CAPITAL IMPROVEMENT PROJECT  
**24' DRAINAGE CHANNEL**  
HYDRAULIC AVENUE PAVING - INCIDENTAL DRAINAGE IMPROVEMENTS - PHASE 1

**BAUGHMAN COMPANY, P.A.**  
ENGINEERING, SURVEYING, & PLANNING  
316-262-7271 • 315 ELLIS • WICHITA, KANSAS 67211

SHEET  
OF  
36