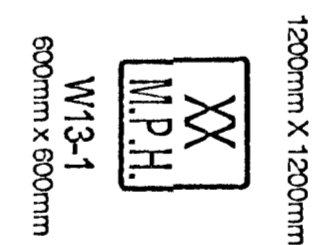
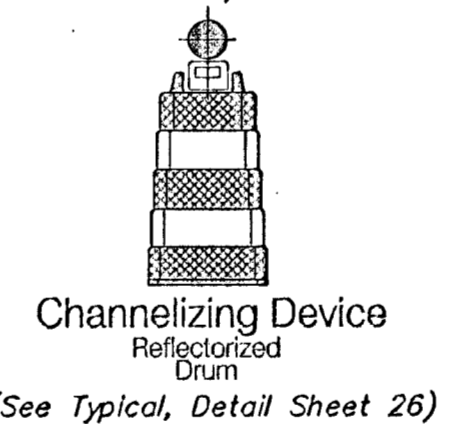
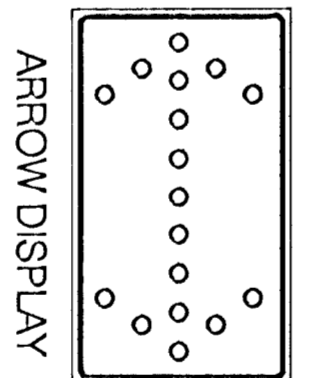
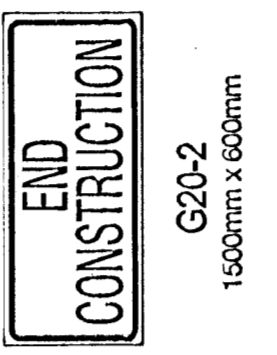
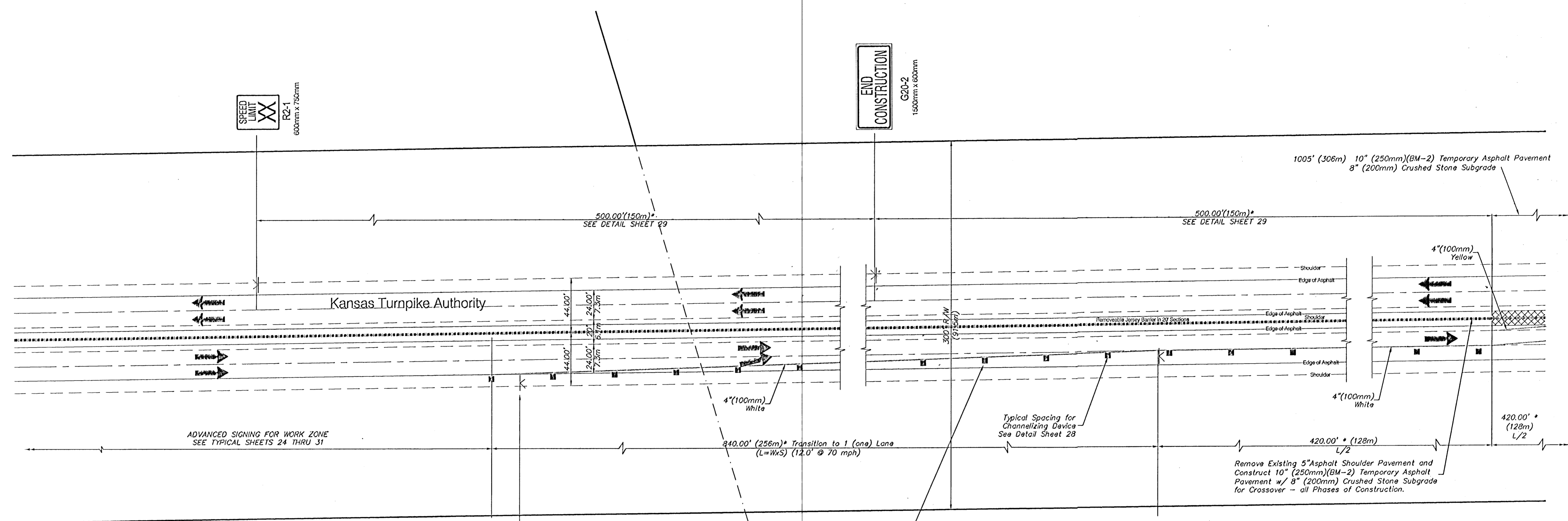


SCALE:
1" = 40'



*NOTE: All Signing and Channelization on this Project shall be done in accordance with specifications set forth in the current Manual on Uniform Traffic Control Devices and referenced KDOT TYPICAL SHEETS. (See Sheets 24 thru 31)

NOTE:
Existing Concrete Median Barrier to Remain In Place Throughout all Phases of Construction except where removal is necessary for Traffic Control and Construction Excavation. Removed Concrete Median Barrier to be Stockpiled on Site away from Traffic and Construction Operations until Re-installed.

PROJECT NUMBER 472-76-245-83324		SHEET NAME TC01		ENGINEERING DIRECTORY F:\Hydraulic\KTA	
DESIGN TPV	DRAWN STAFF	APPROVED JFB	DATE FEB 2001	SCALE NOTED	BAUGHMAN NO 99-09-B453

CAPITAL IMPROVEMENT PROJECT
TRAFFIC CONTROL PLAN in conjunction with RBCB CROSSING KTA
HYDRAULIC AVENUE PAVING - INCIDENTAL DRAINAGE IMPROVEMENTS - PHASE 1

BAUGHMAN COMPANY, P.A.
ENGINEERING, SURVEYING, & PLANNING
319-262-7271 • 315 ELLIS • WICHITA, KANSAS 67211

SHEET
9
OF
36