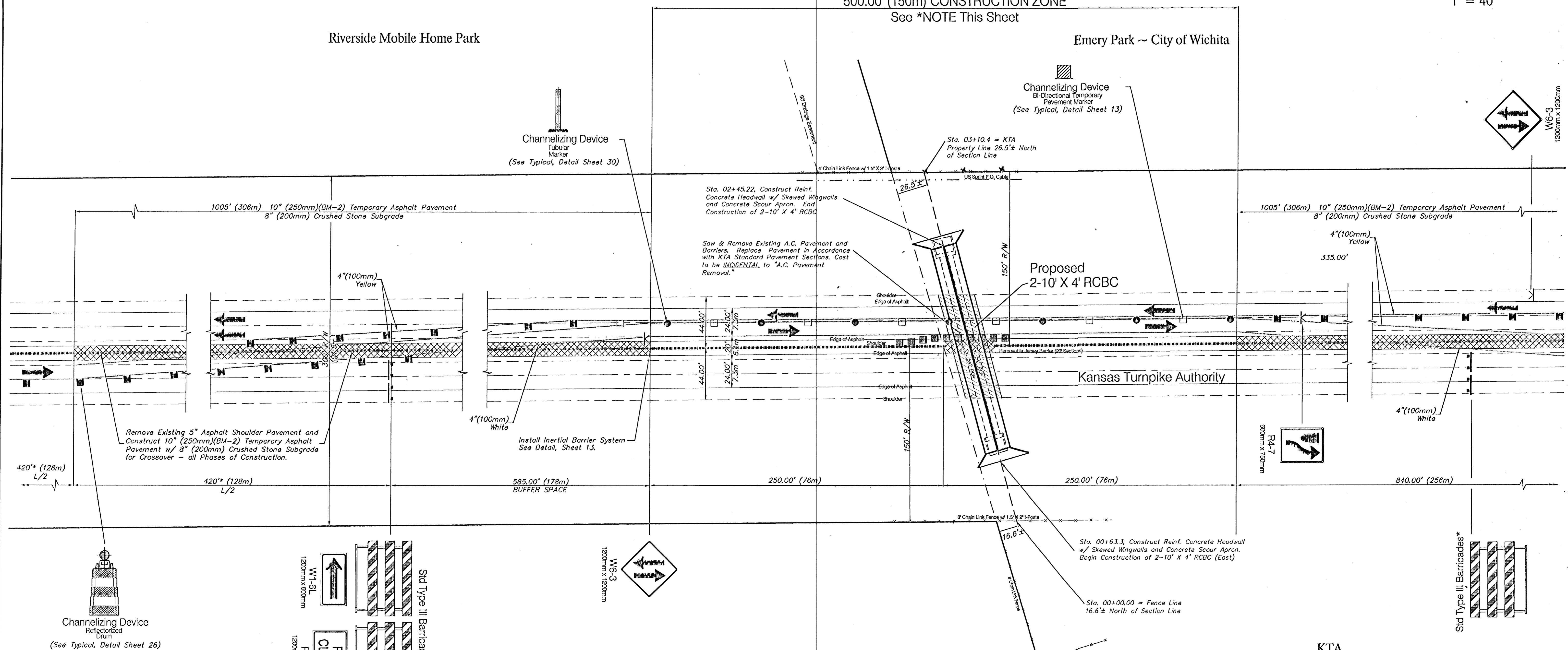


SCALE:
1" = 40'

500.00' (150m) CONSTRUCTION ZONE
See *NOTE This Sheet

Riverside Mobile Home Park

Emery Park ~ City of Wichita



Channelizing Device
Tubular
Marker
(See Typical, Detail Sheet 30)

Channelizing Device
Bi-Directional Temporary
Pavement Marker
(See Typical, Detail Sheet 13)

Sta. 02+45.22, Construct Reinf.
Concrete Headwall w/ Skewed Wingwalls
and Concrete Scour Apron. End
Construction of 2-10' X 4' RCBC

Saw & Remove Existing A.C. Pavement and
Barriers. Replace Pavement in Accordance
with KTA Standard Pavement Sections. Cost
to be INCIDENTAL to "A.C. Pavement
Removal."

Proposed
2-10' X 4' RCBC

Kansas Turnpike Authority

Remove Existing 5" Asphalt Shoulder Pavement and
Construct 10" (250mm)(BM-2) Temporary Asphalt
Pavement w/ 8" (200mm) Crushed Stone Subgrade
for Crossover - all Phases of Construction.

Install Inertial Barrier System
See Detail, Sheet 13.

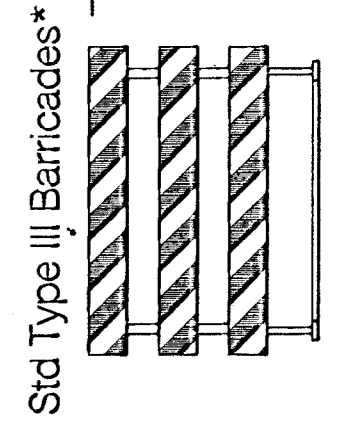
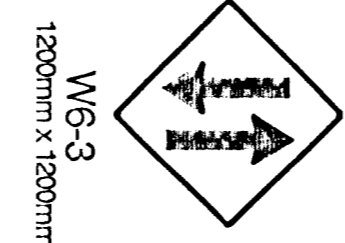
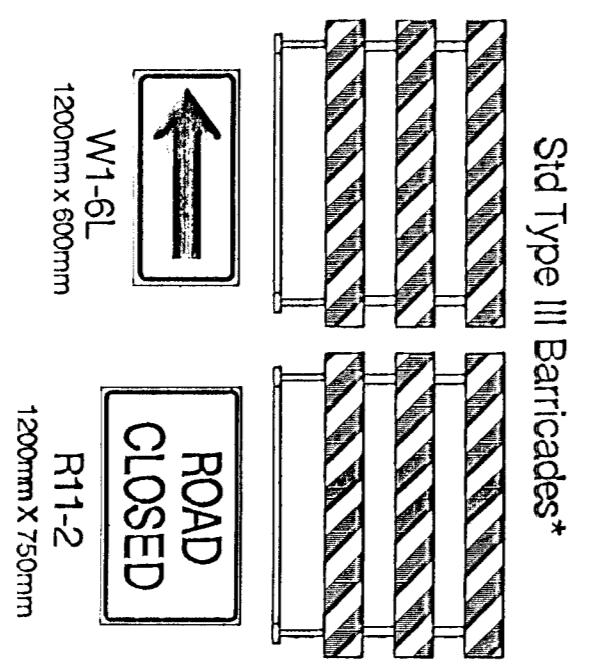
Sta. 00+63.3, Construct Reinf. Concrete Headwall
w/ Skewed Wingwalls and Concrete Scour Apron.
Begin Construction of 2-10' X 4' RCBC (East)

Sta. 00+00.00 = Fence Line
16.6'± North of Section Line

*NOTE: All Signing and Channelization on this Project
shall be done in accordance with specifications set forth
in the current Manual on Uniform Traffic Control Devices
and referenced KDOT TYPICAL SHEETS
(See Sheets 24 thru 31)

NOTE:
Existing Concrete Median Barrier to
Remain In Place Throughout all Phases
of Construction except where removal is
necessary for Traffic Control and Construction
Excavation. Removed Concrete Median Barrier
to be Stockpiled on Site away from Traffic
and Construction Operations until Re-installed.

Channelizing Device
ReflectORIZED
Drum
(See Typical, Detail Sheet 26)



City of Wichita

KTA

PROJECT NUMBER 472-76-245-83324		SHEET NAME TC02		ENGINEERING DIRECTORY F:\Hydraulic\KTA		CAPITAL IMPROVEMENT PROJECT TRAFFIC CONTROL PLAN in conjunction with RCBC CROSSING KTA		BAUGHMAN COMPANY, P.A. ENGINEERING, SURVEYING, & PLANNING		SHEET 10 OF 36	
DESIGN TPV	DRAWN STAFF	APPROVED JFB	DATE FEB 2001	SCALE NOTED	BAUGHMAN NO 99-09-E453	HYDRAULIC AVENUE PAVING - INCIDENTAL DRAINAGE IMPROVEMENTS - PHASE 1		318-262-7271 • 315 ELLIS • WICHITA, KANSAS 67211			