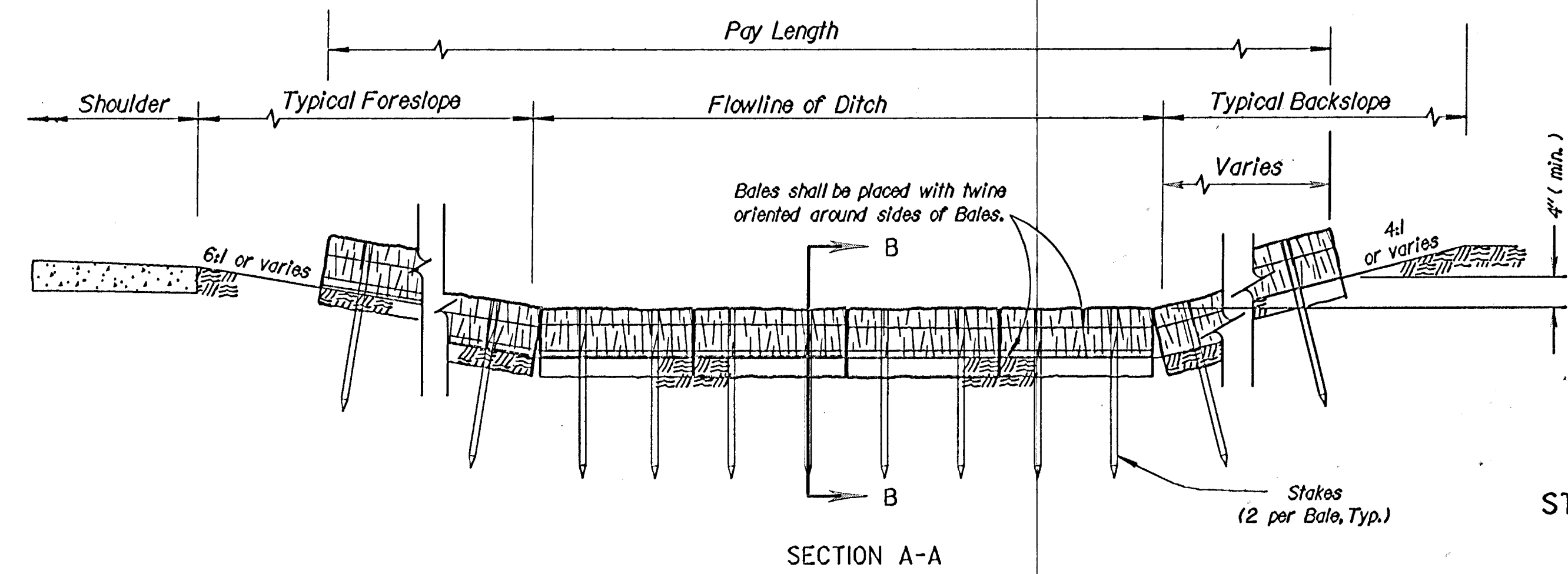
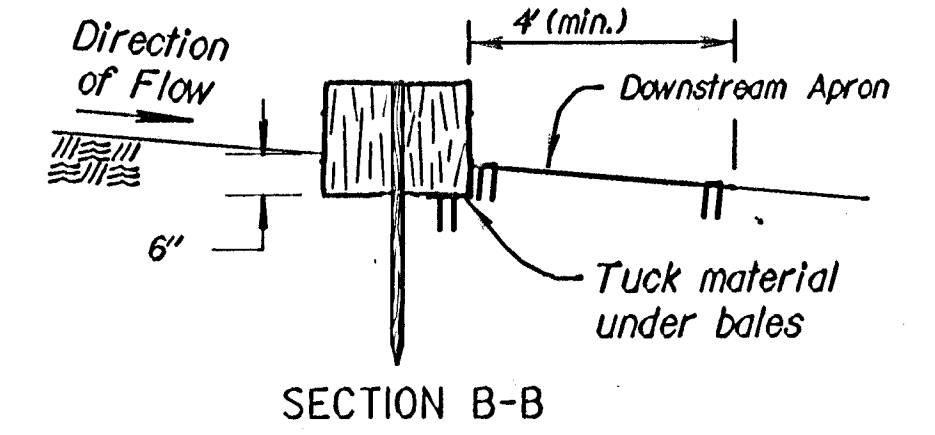
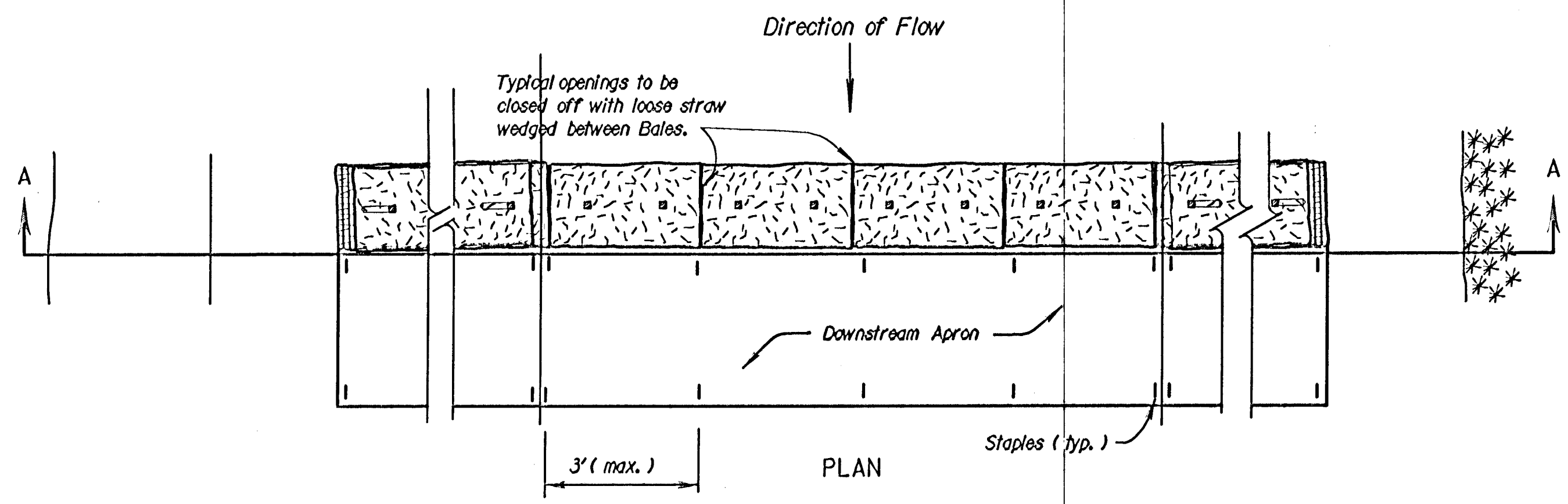


FHWA REGION NO.	STATE	PROJECT NO.	YEAR	SHEET NO.	TOTAL SHEETS
7	KANSAS			19	36



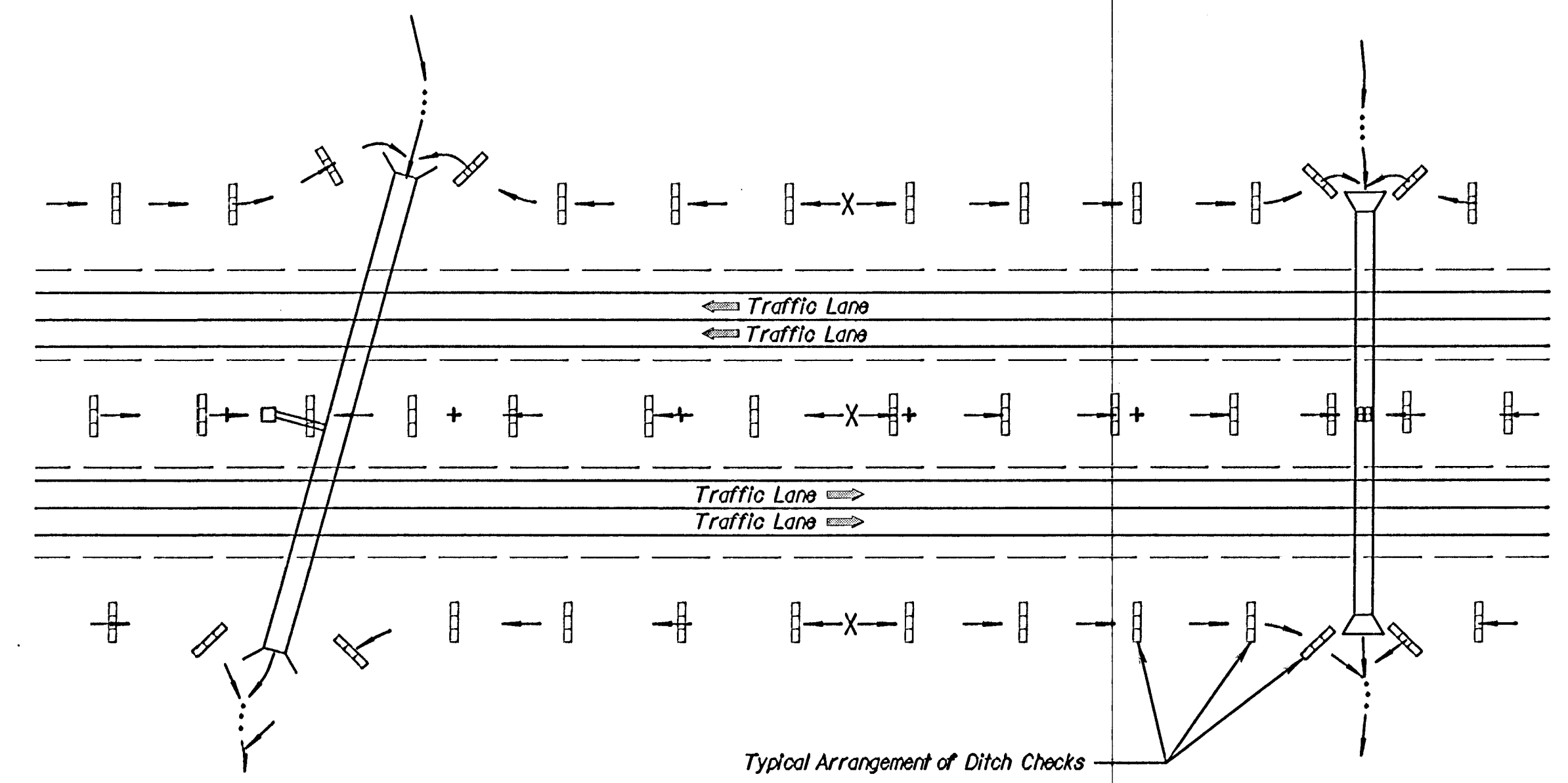
STRAW OR HAY BALE DITCH CHECK
NO SCALE

- STRAW OR HAY BALE NOTES:
1. Place bales tightly together, with loose straw or hay wedged between bales to close off openings.
 2. Wood stakes shall be 2" x 2" (nom.) x 4' (min.) long.
 3. Use as many bales as necessary to completely block the ditch and to prevent water from flowing around the ends of the ditch check.
 4. Use only twine to bind bales. The use of wire binding is prohibited because it does not readily biodegrade.
 5. Use silt fence material as the downstream apron to prevent scour below the ditch check.
 6. Wire staples shall be 6" long by 1" wide, minimum.

DITCH & SLOPE (%)	SPACING INTERVAL (FEET)
1.0	200
2.0	100
3.0	65
4.0	50
5.0	40
6.0	33

NOTE: Use this spacing for all except Rock Ditch Checks.

- GENERAL NOTES:
- 1) The choice of ditch check methods is at the option of the Contractor.
 - 2) Use only rock checks in situations where the ditch slope exceeds 6 percent.
 - 3) Ditch checks damaged by Contractor's negligence, including improper maintenance or lack of maintenance, shall be repaired by Contractor at no extra cost to KDOT.



TYPICAL DITCH CHECK LAYOUT PLAN
NO SCALE

5					
4					
3					
2					
1	5/10/99	Revised Standard		WCL	RDR
NO.	DATE	REVISIONS		BY	APP'D

KANSAS DEPARTMENT OF TRANSPORTATION
TEMPORARY EROSION AND POLLUTION CONTROL
STRAW OR HAY BALE DITCH CHECKS

LA852E 19/36

FHWA APPROVAL 8/20/99 APP'D Richard D. Ross
DESIGN WCL DETAILED WCL QUANTITIES TRACED
DESIGN CK. RDR DETAIL CK. RDR QUANT. CK. TRACE CK. RDR

Drawn By: \$\$\$USERNAME\$\$\$
 DGN File: \$\$\$DGNFILE\$\$\$
 Plotted: \$\$\$STTIME\$\$\$ View: PLOT 1