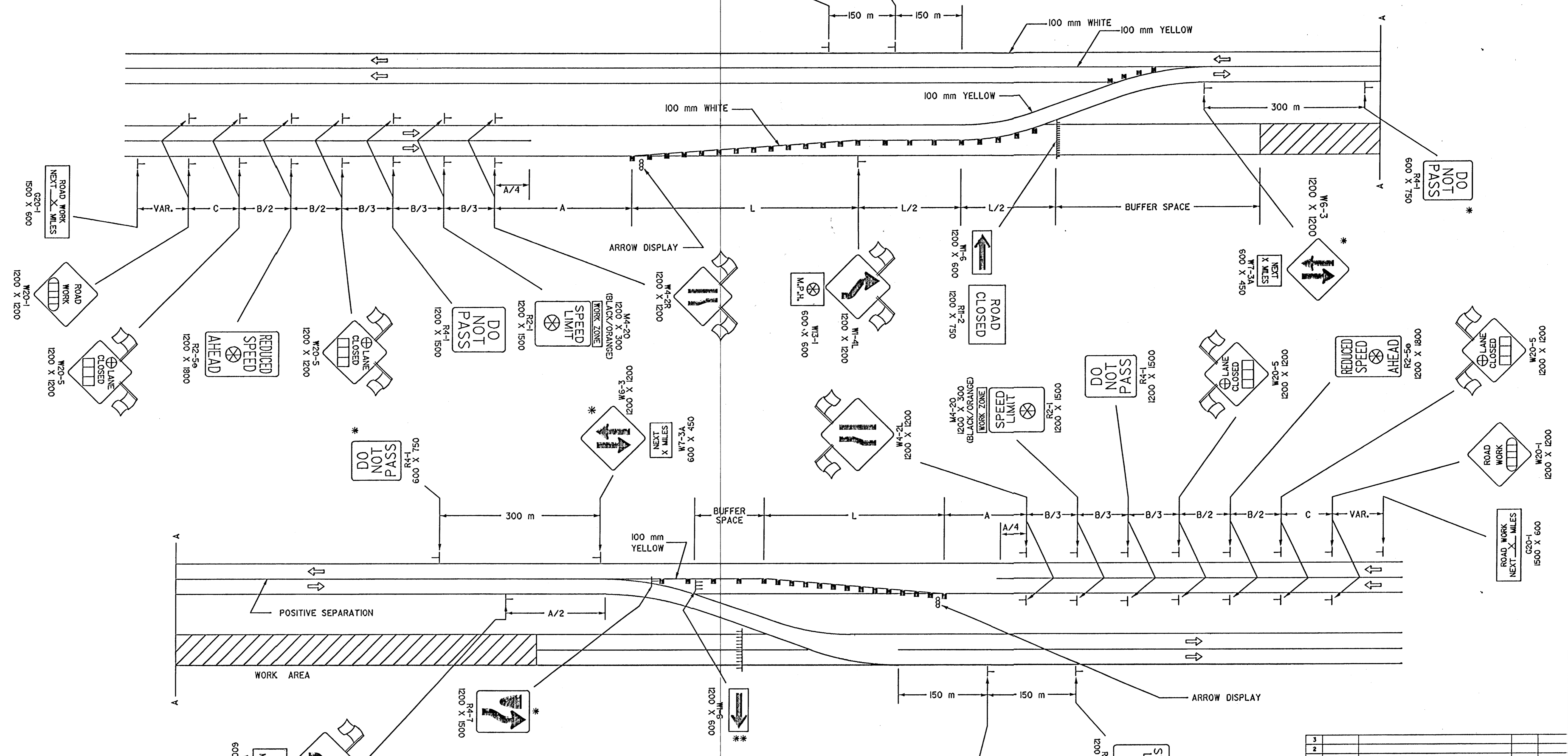


FHWA REGION NO.	STATE	PROJECT NO.	YEAR	SHEET NO.	TOTAL SHEETS
7	KANSAS			29	36

REFER TO STD. TET01SI FOR ADDITIONAL INFORMATION ON TRAFFIC CONTROL SIGNS AND SIGN SPACING.  
 REFER TO STD. TET02SI FOR INFORMATION ON TAPERS AND CHANNELIZING DEVICES.  
 REFER TO STD. TET00SI FOR LENGTH OF BUFFER SPACE.



- ||| Type III Barricades
- X Length To The Nearest Whole Mile
- M Channelizing Device
- ⊞ AHEAD, 1500 FT OR 1 MILE
- ⊞ AHEAD, 1000 FT, 1500 FT, OR 1/2 MILE
- ⊞ RIGHT OR LEFT
- ⊗ Speed To Be Determined By The Engineer

THE W6-3 & R4-1 SIGN COMBINATION MAY BE REQUIRED AT ADDITIONAL LOCATIONS ALONG THE PROJECT. THE SPACING BETWEEN THESE LOCATIONS SHALL BE A MAXIMUM OF 1.6 KILOMETERS. THE W7-3a SIGN SHOULD BE MOUNTED WITH THE W6-3 SIGN AT 3.2 KILOMETER INCREMENTS ON PROJECT OF 6.4 KILOMETERS OR LONGER.

- \* SIGN TO BE ELIMINATED IF CONCRETE SAFETY BARRIER IS USED
- \*\* BARRICADE TO BE ELIMINATED AND SIGN W1-6 TO BE MOUNTED ON SKIDS IF CONCRETE SAFETY BARRIER IS USED.

Plotted By : *USERNAME*  
 Plot File : *XXXXXXXXXX*  
 Plot Date : *XXXXXXXXXX*

3				
2				
1				
NO.	DATE	REVISION	BY	APP'D

**KANSAS DEPARTMENT OF TRANSPORTATION**  
 TYPICAL TRAFFIC CONTROL  
 FOUR-LANE DIVIDED HIGHWAY  
 ONE ROADWAY CLOSED  
 CROSSOVER FROM LEFT LANE  
 TET40SI  
 9/1/00

FHWA APPROVAL	9-1-00	APP'D	Michael P. McKenna
DESIGNED	L.E.R.	DETAILED	B.A.H.
DESIGN CK.		QUANTITIES	
		DESIGN CK.	