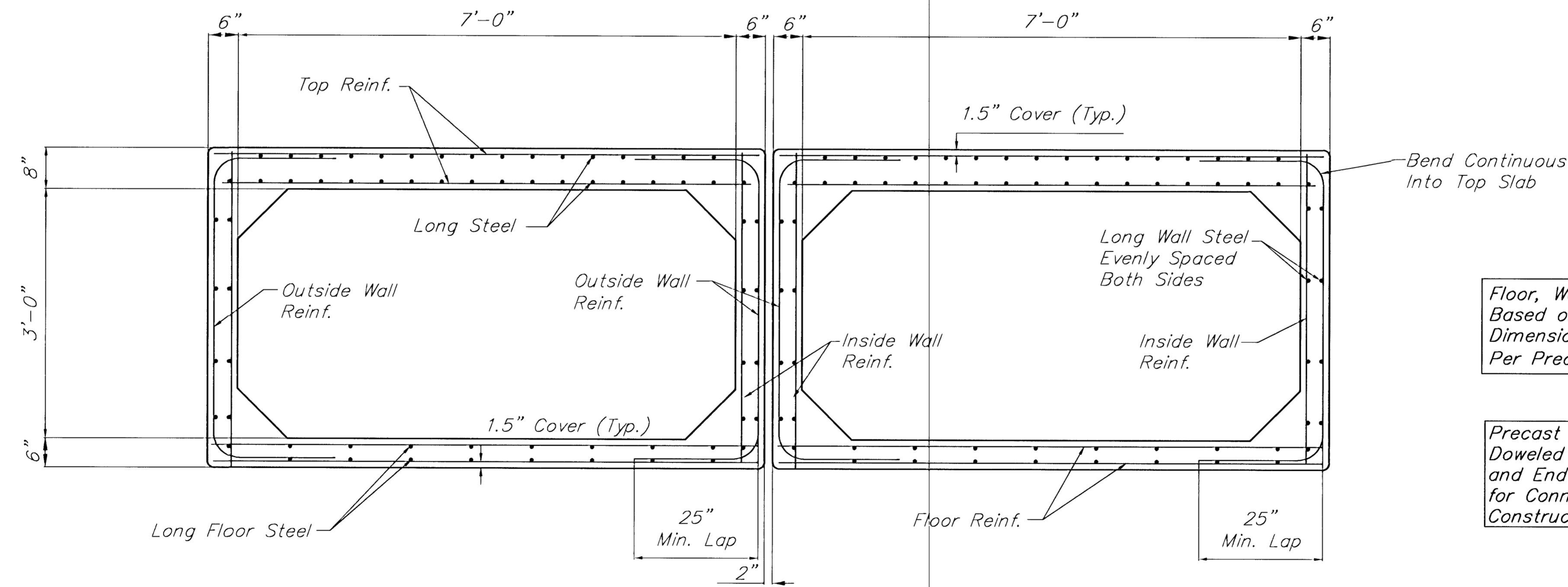


The Contractor shall reseed the cover over the RCBC according to City of Wichita Specifications. Cost to be *INCIDENTAL* to "Site Restoration."

RCBC TYPICAL SECTION



Floor, Walls, & Top Dimensions are Based on Standard Precast Dimensions. RCBC Reinforcement Per Precast Manufacturer's Design.

Precast Manufacturer to Install Doweled Rebar at the Beginning and End of the RCBC Sections for Connection to Cast-In-Place Construction.

RCBC DETAIL

PROJECT NUMBER 472-76-245-83324		SHEET NAME Detail		ENGINEERING DIRECTORY E:\Hydraulic\Pond		CAPITAL IMPROVEMENT PROJECT		BAUGHMAN COMPANY, P.A. ENGINEERING, SURVEYING, & PLANNING 316-262-7271 • 315 ELLIS • WICHITA, KANSAS 67211	SHEET 4 OF 47
DESIGN JFB/TPV	DRAWN TPV	APPROVED JFB	DATE Sept 2001	SCALE None	BAUGHMAN NO 99-09-E453	RCBC TYPICAL SECTION & DETAIL HYDRAULIC AVENUE PAVING - INCIDENTAL DRAINAGE IMPROVEMENTS - PHASE 2			

F:\Eng\Hydraulic\Pond\Box Detail.dwg Sun Sep 16 08:26:18 2001