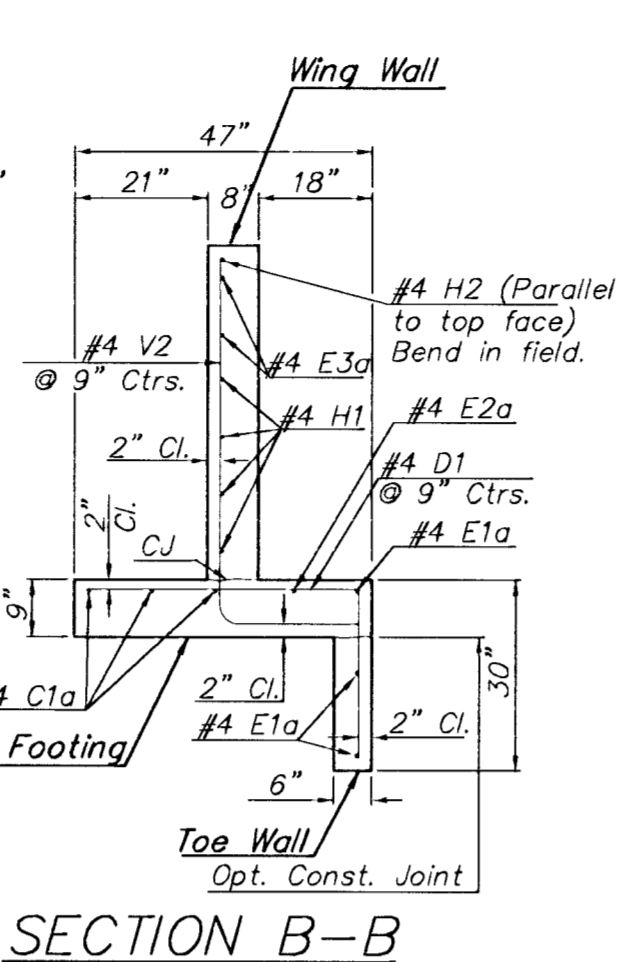
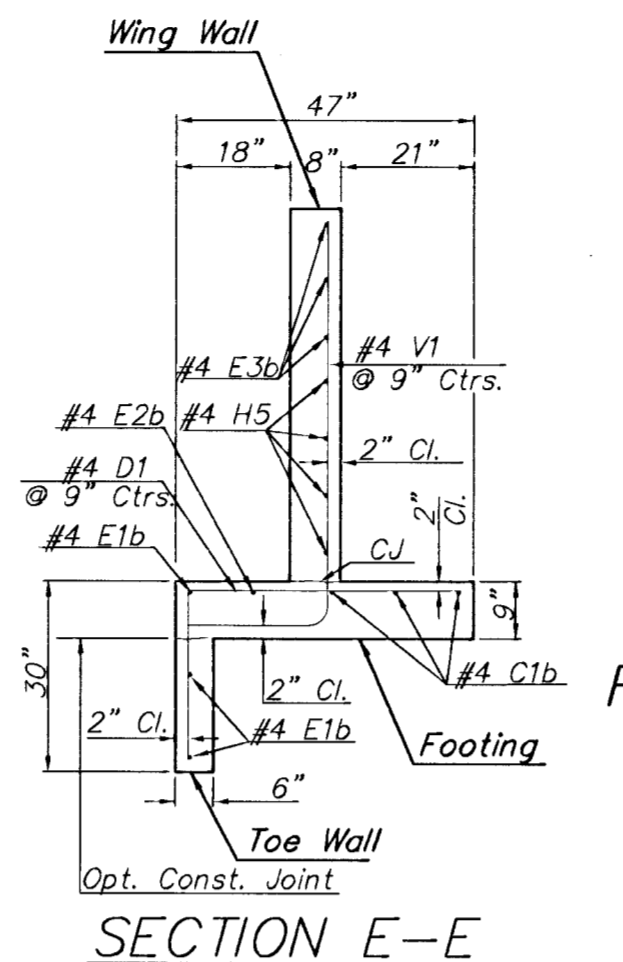


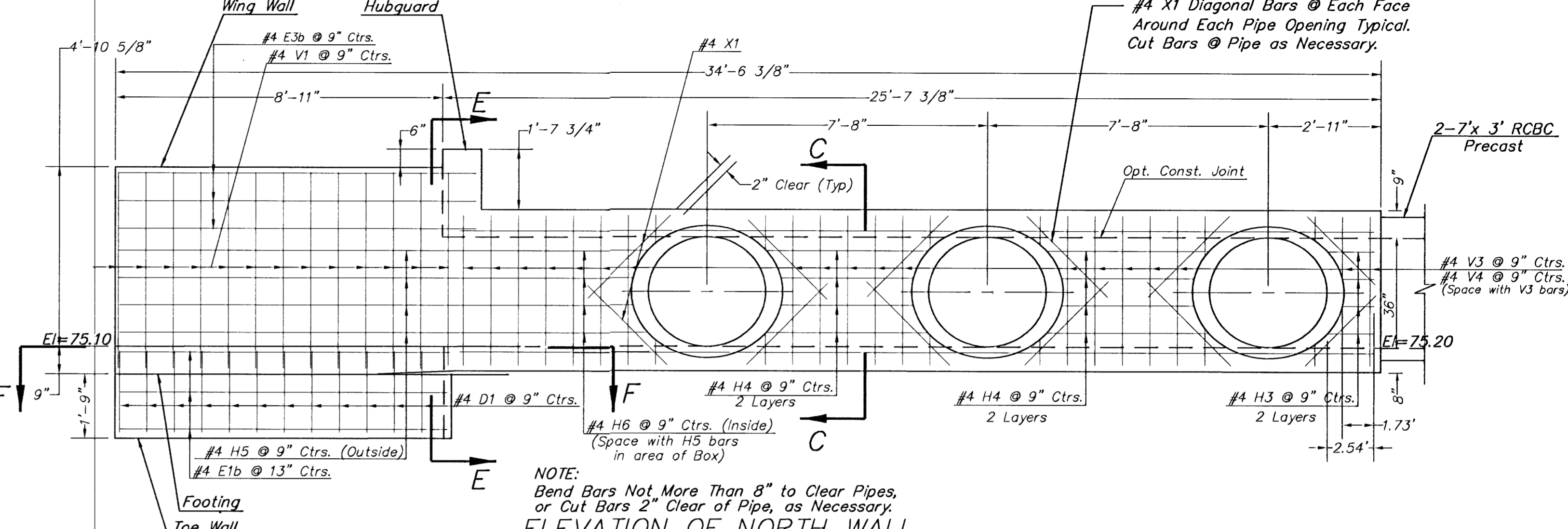
ELEVATION OF SOUTH WALL



SECTION B-B

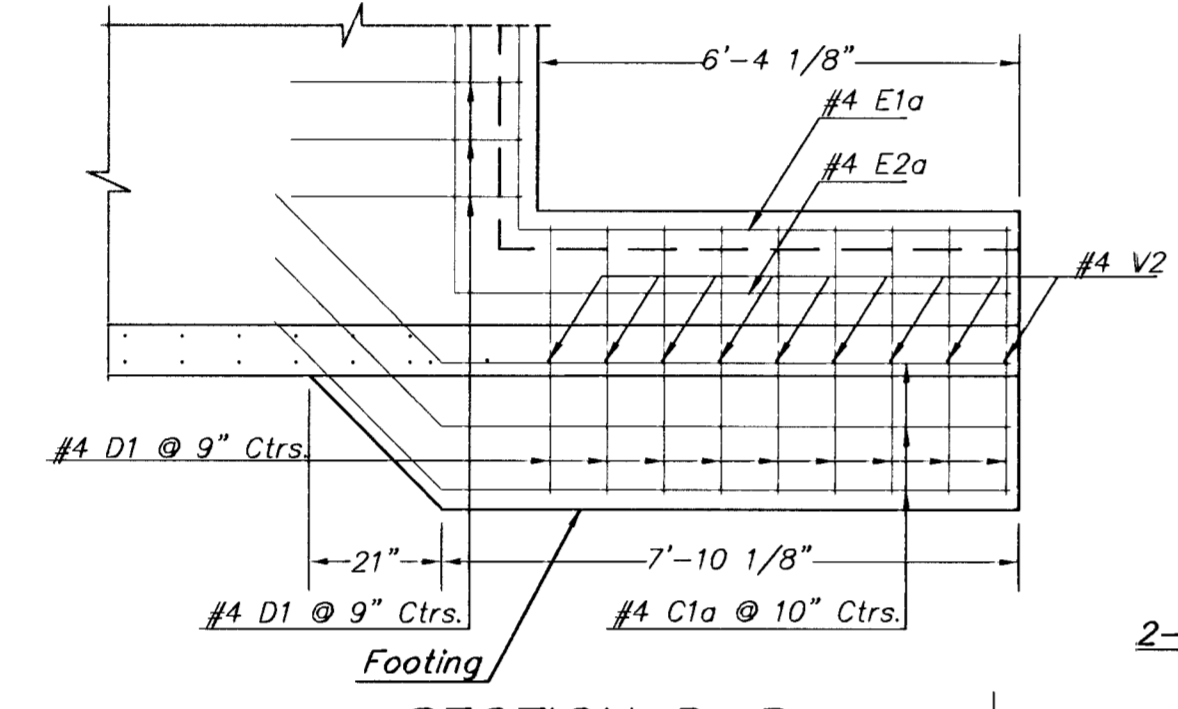


SECTION E-E

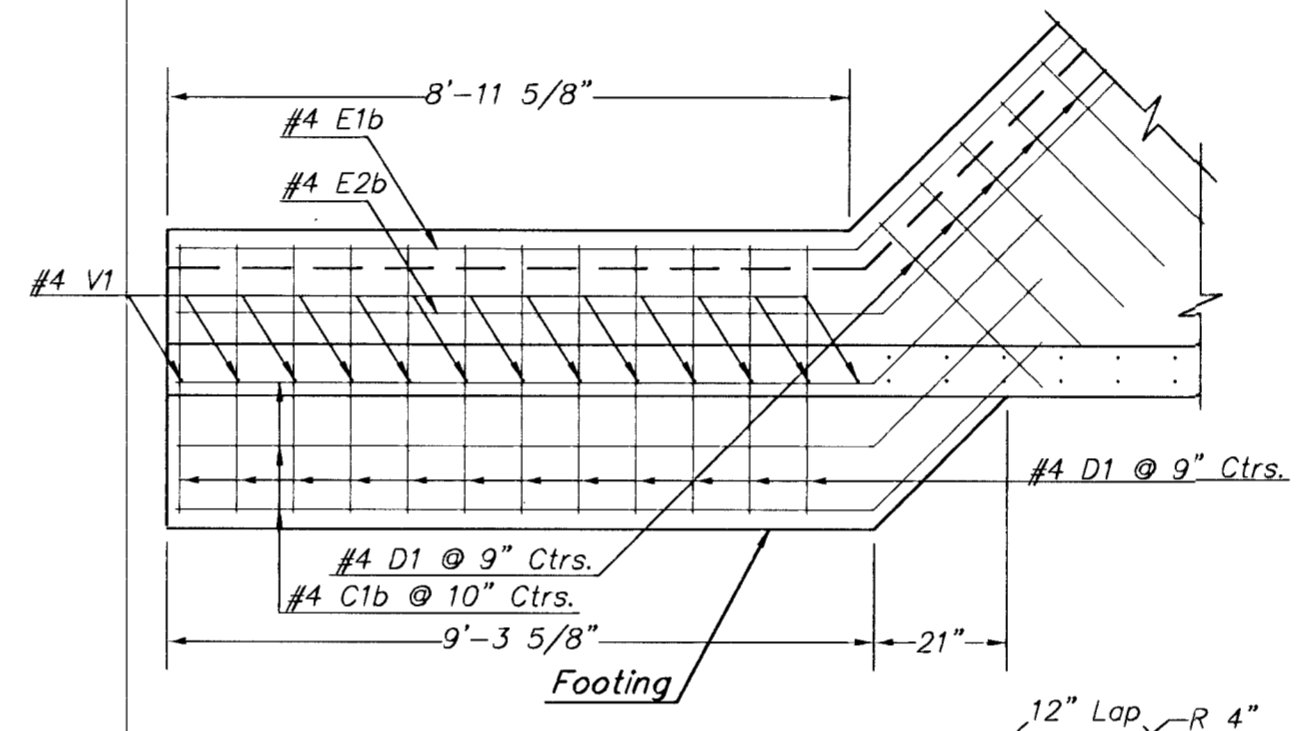


NOTE: Bend Bars Not More Than 8" to Clear Pipes, or Cut Bars 2" Clear of Pipe, as Necessary.

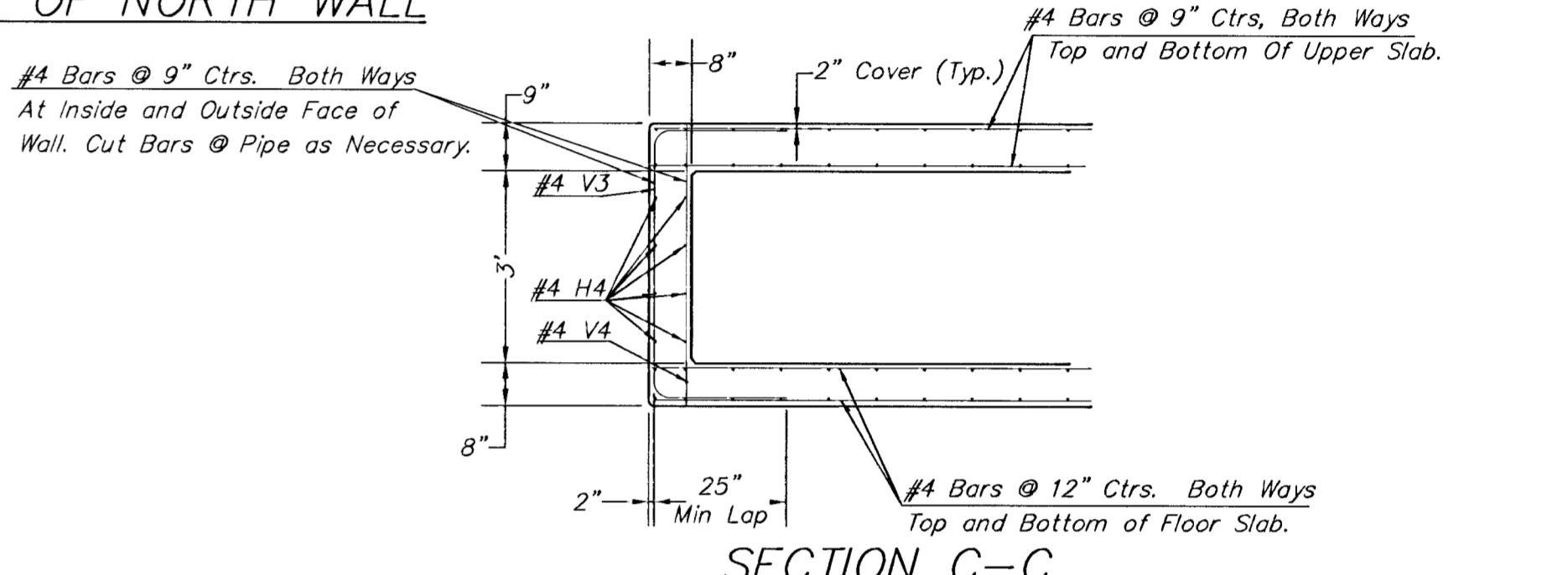
ELEVATION OF NORTH WALL



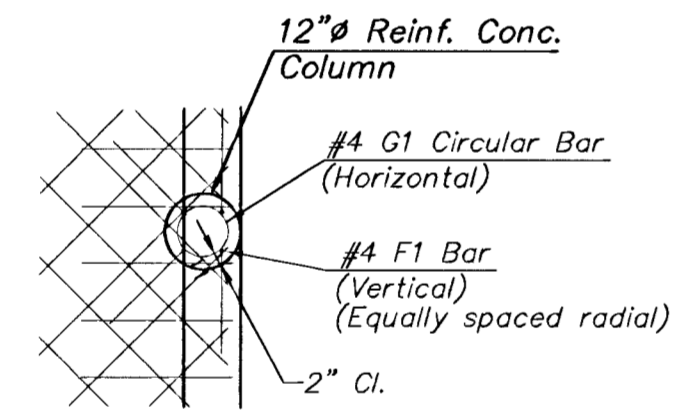
SECTION D-D



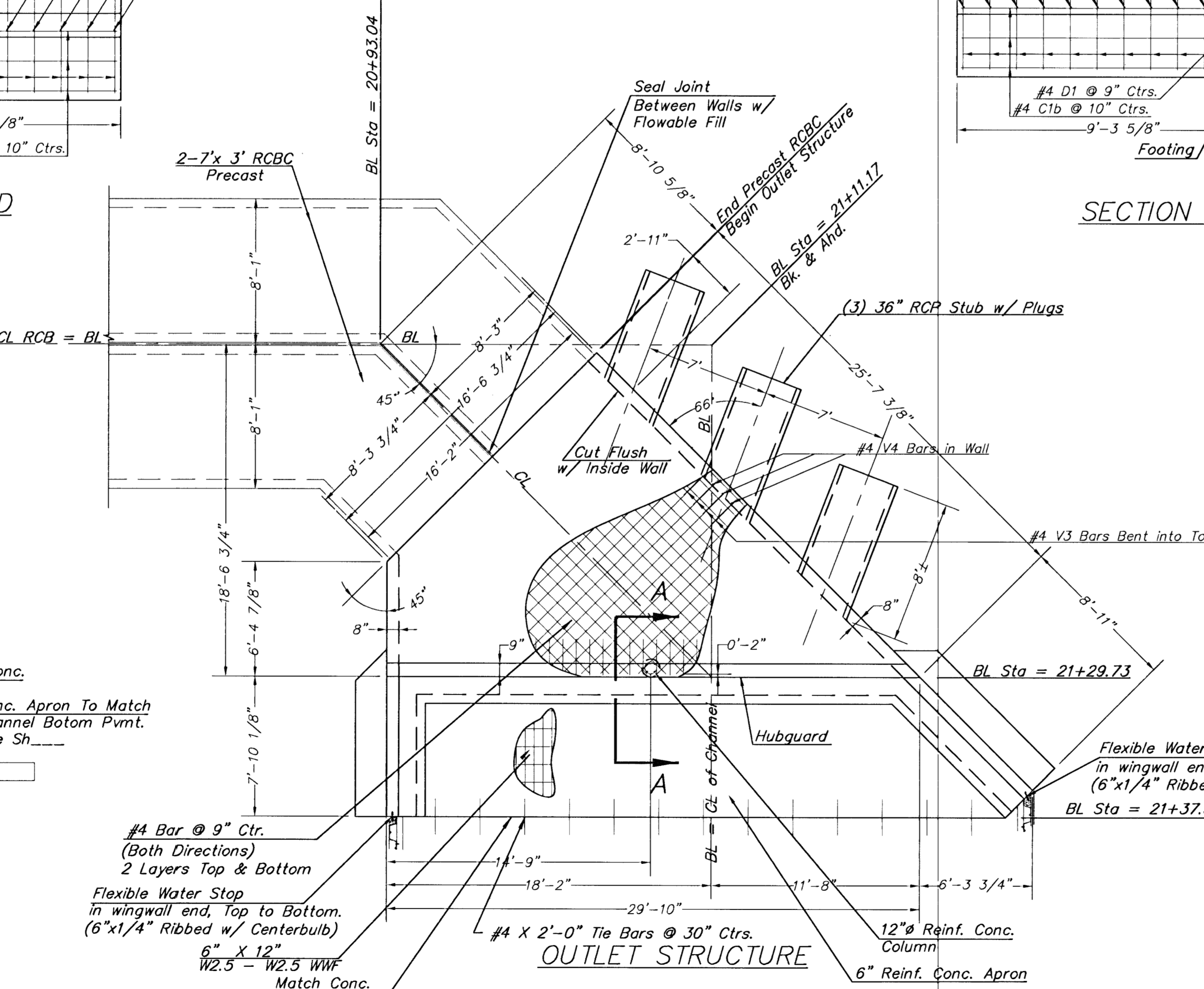
SECTION F-F



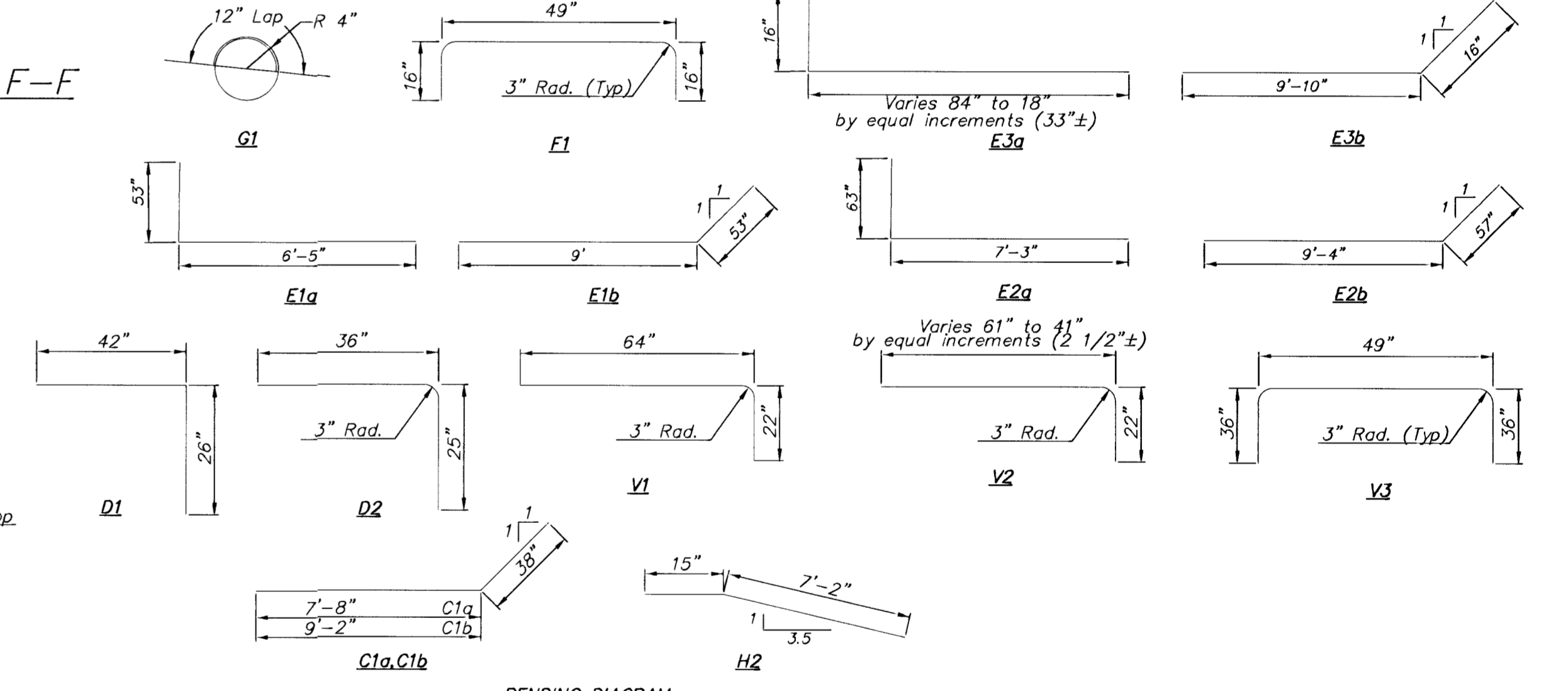
SECTION C-C



DETAIL OF COLUMN STEEL



OUTLET STRUCTURE



BENDING DIAGRAM (All dimensions are out to out of bars.)

- GENERAL NOTES
1. All Existing Concrete Surfaces Adjacent to New Concrete Shall be Thoroughly Cleaned by Brushing, and Soaked with Water immediately Prior to Placing New Concrete.
 2. All Exposed Concrete Edges Shall be Beveled 3/4".
 3. All Reinforcing Steel to have Minimum 1-1/2" Concrete Cover.

UNIT STRESSES: Class AAA Concrete: $f'_c = 4000$ p.s.i.
Reinforcing Steel: $f_y = 60,000$ p.s.i.

CONCRETE: Class AAA Concrete shall be used throughout. Bevel all exposed edges with a 3/4 inch triangular molding.

REINFORCING: All reinforcing shall conform to ASTM A615, Grade 60. Welded Wire Fabric shall conform to ASTM A185. All dimension relative to reinforcing steel shall be to centerline of bar unless otherwise noted.

Est. Qties.
29.6 C.Y. Concrete
2580 Lbs. Rein Steel

For Information Only
Cost of Concrete, Steel, Etc. to be INCIDENTAL to the Lump Sum Bid Item "Outlet Structure".

NOTE: Reinforcing Bar List is for outlet at one end of box only. *** See Bending Diagram

No.	#4 B1	#4 C1a	#4 C1b	#4 D1	#4 D2	#4 E1a	#4 E1b	#4 E2a	#4 E2b	#4 E3a	#4 E3b	#4 E4a	#4 E4b	#4 F1	#4 G1	#4 H1	#4 H2	#4 H3	#4 H4	#4 H5	#4 H6	#4 H7	#4 H8	#4 H9	#4 H10	#4 H11	#4 H12	#4 H13	#4 H14	#4 H15	#4 H16	#4 H17	#4 H18	#4 H19	#4 H20	#4 H21	#4 H22	#4 H23	#4 H24	#4 H25	#4 H26	#4 H27	#4 H28	#4 H29	#4 H30	#4 H31	#4 H32	#4 H33	#4 H34	#4 H35	#4 H36	#4 H37	#4 H38	#4 H39	#4 H40	#4 H41	#4 H42	#4 H43	#4 H44	#4 H45	#4 H46	#4 H47	#4 H48	#4 H49	#4 H50	#4 H51	#4 H52	#4 H53	#4 H54	#4 H55	#4 H56	#4 H57	#4 H58	#4 H59	#4 H60	#4 H61	#4 H62	#4 H63	#4 H64	#4 H65	#4 H66	#4 H67	#4 H68	#4 H69	#4 H70	#4 H71	#4 H72	#4 H73	#4 H74	#4 H75	#4 H76	#4 H77	#4 H78	#4 H79	#4 H80	#4 H81	#4 H82	#4 H83	#4 H84	#4 H85	#4 H86	#4 H87	#4 H88	#4 H89	#4 H90	#4 H91	#4 H92	#4 H93	#4 H94	#4 H95	#4 H96	#4 H97	#4 H98	#4 H99	#4 H100
Length	2'-1"	10'-6"	12'-2"	5'-8"	5'-1"	10'-10"	13'-5"	12'-6"	14'-1"	***	11'-2"	30'-2"	20'	6'-8"	3'-1"	14'	8'-5"	1'-2"	4'-5"	14'-5"	5'-2"	6'-2"	7'-1"	***	10'	4'-2"	2'-9"																																																																																								

PROJECT NUMBER 472-76-245-83324	SHEET NAME Outlet	ENGINEERING DIRECTORY F:\Hydraulic\Pond
DESIGN JFB/KK	DRAWN TCA	APPROVED JFB
DATE Sept 2001	SCALE None	BAUGHMAN NO 99-09-E453

CAPITAL IMPROVEMENT PROJECT
OUTLET STRUCTURE DETAILS
HYDRAULIC AVENUE PAVING - INCIDENTAL DRAINAGE IMPROVEMENTS - PHASE 1

BAUGHMAN COMPANY, P.A.
ENGINEERING, SURVEYING, & PLANNING
316-262-7271 * 315 ULLS * WICHITA, KANSAS 67211

SHEET 5 OF 47