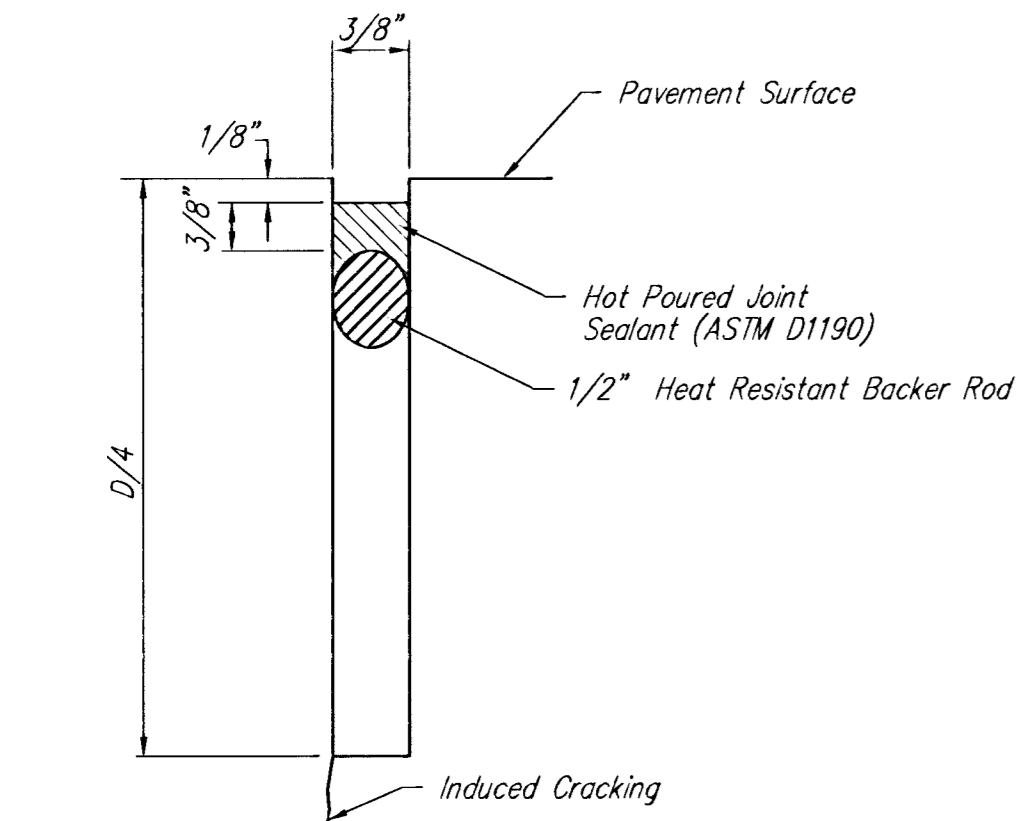
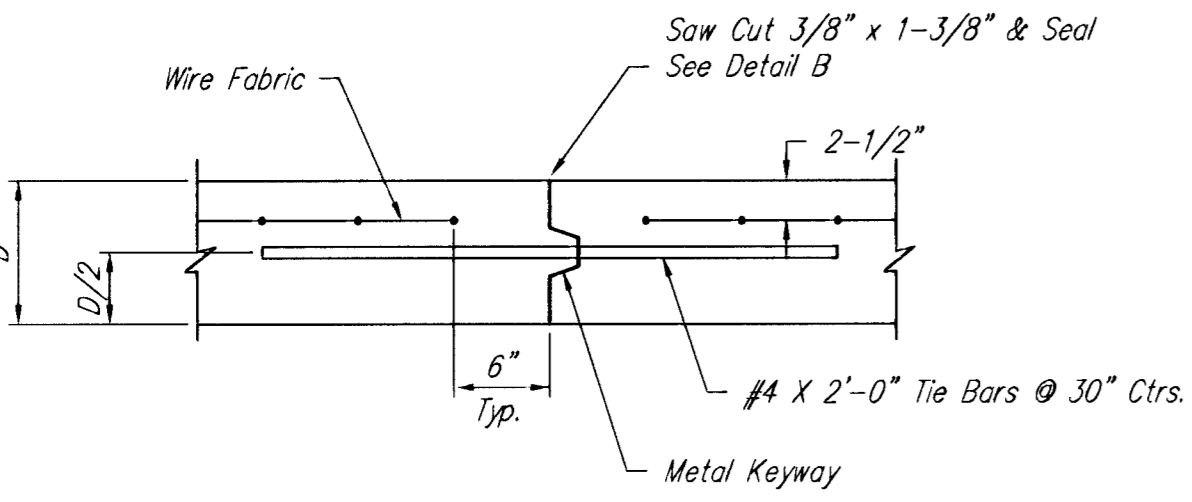


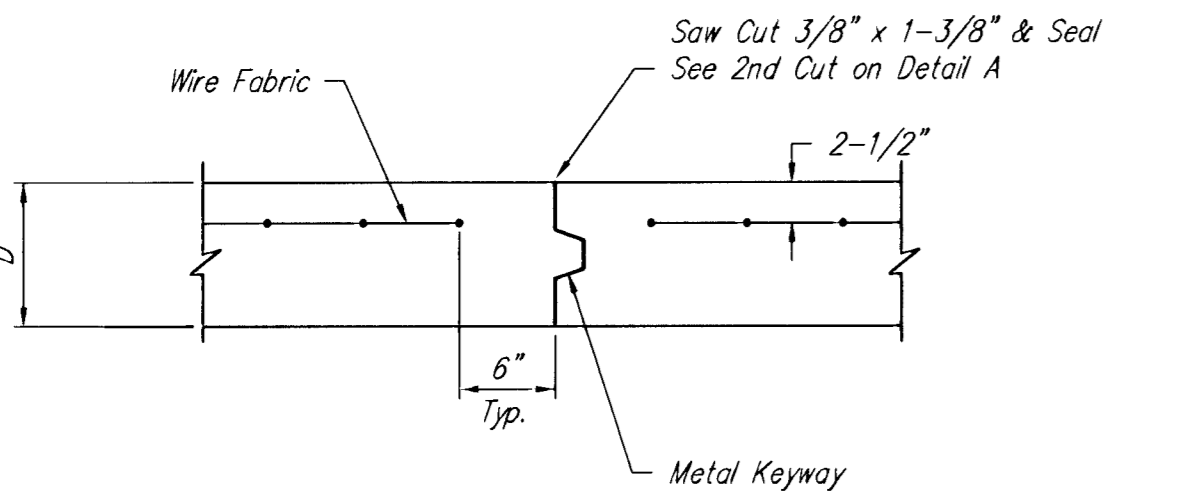
SAW JOINT DETAIL "A"



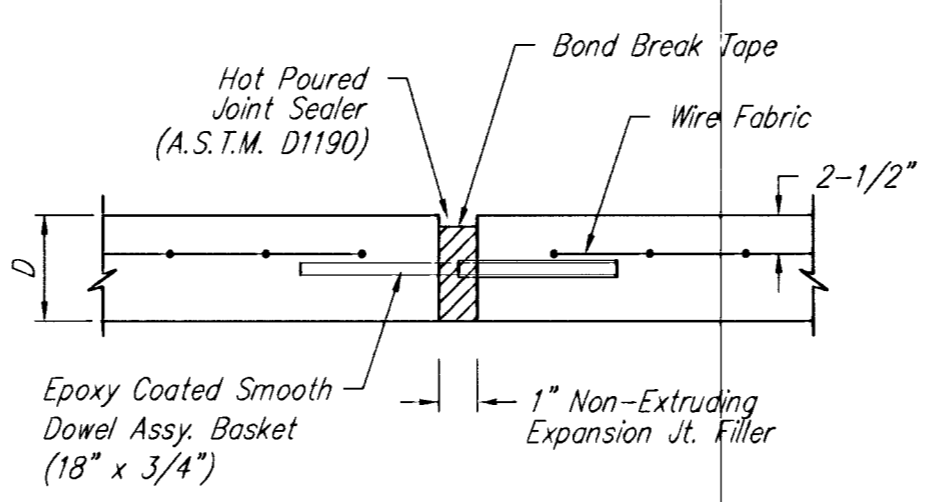
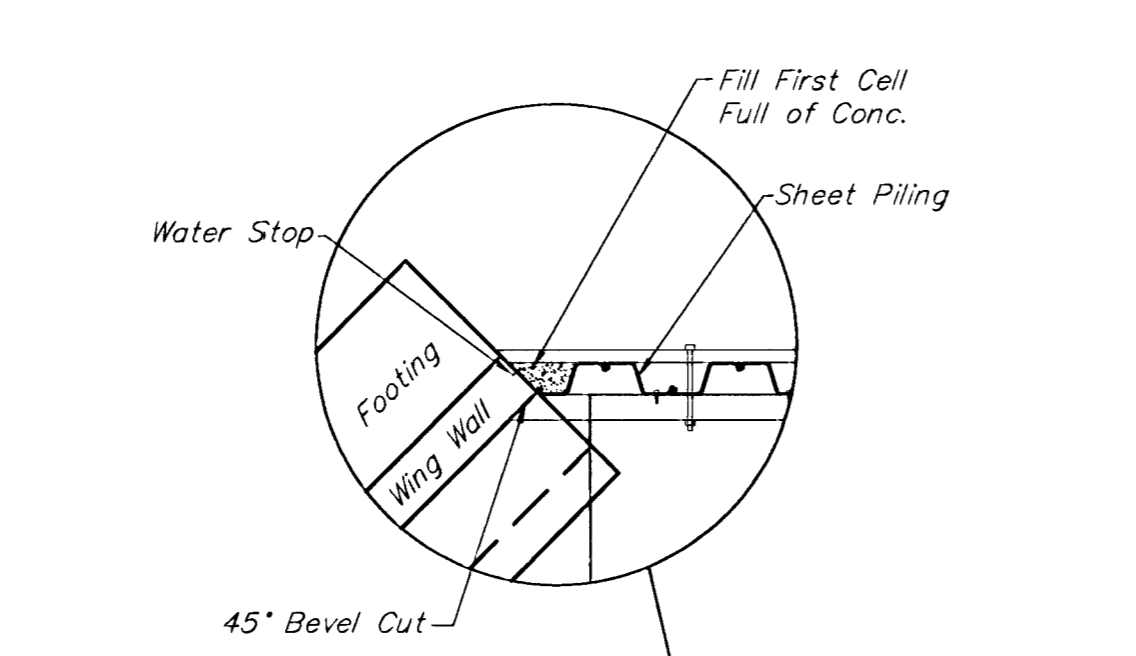
SAW JOINT DETAIL "B"



OPTIONAL LONGITUDINAL JOINT DETAIL (L.J.) (CONSTRUCTION JOINT)



OPTIONAL CONTRACTION JOINT (CONSTRUCTION JOINT)

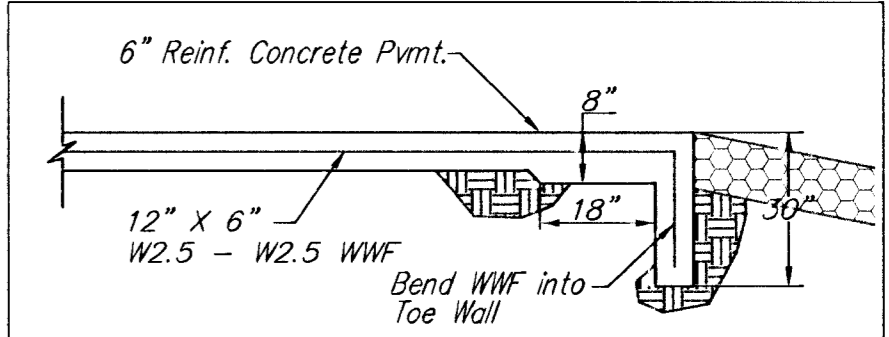


EXPANSION JOINT

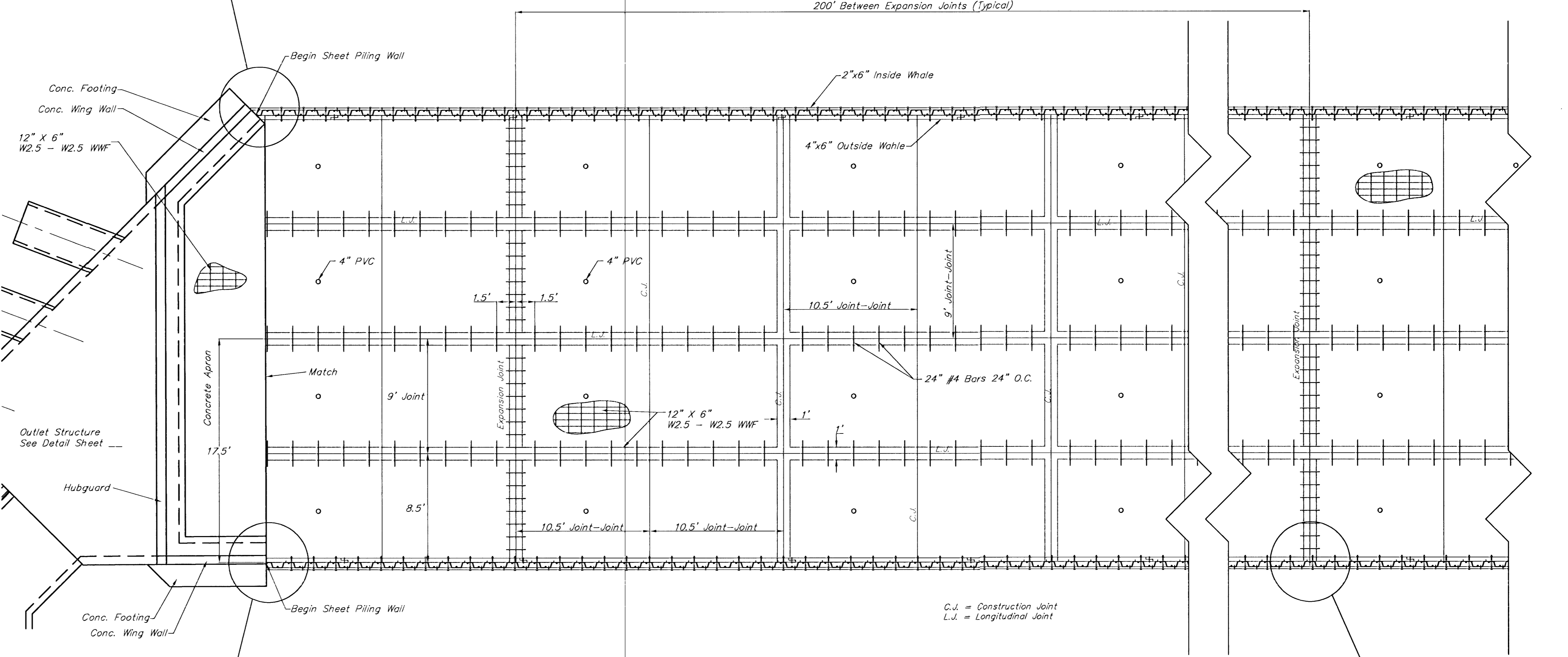
4" PVC Pipes are to be 6" Long (Min.) and Placed In Alternate Slabs As Shown For Drainage and to Prevent Heaving. Cost to be INCIDENTAL to "6" Reinf. Concrete Pavement"

Note: 6" X 12" W2.5 X W2.5 Wire Welded Fabric Reinforcing Shall Be Placed So That The Wires With The 6" Spacing Shall Run Parallel to Longitudinal Joints.

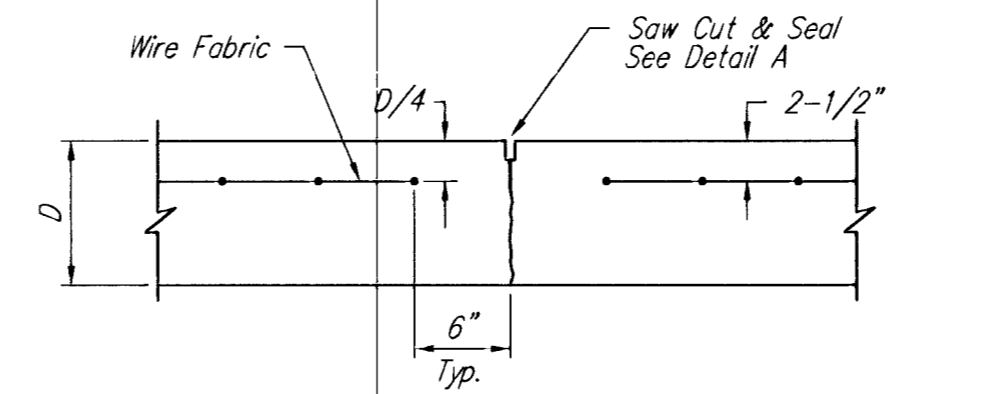
Expansion Joint Shall Be Smooth Dowel Assembly Basket Type, Epoxy Coated, and Greased to Prevent Bonding.



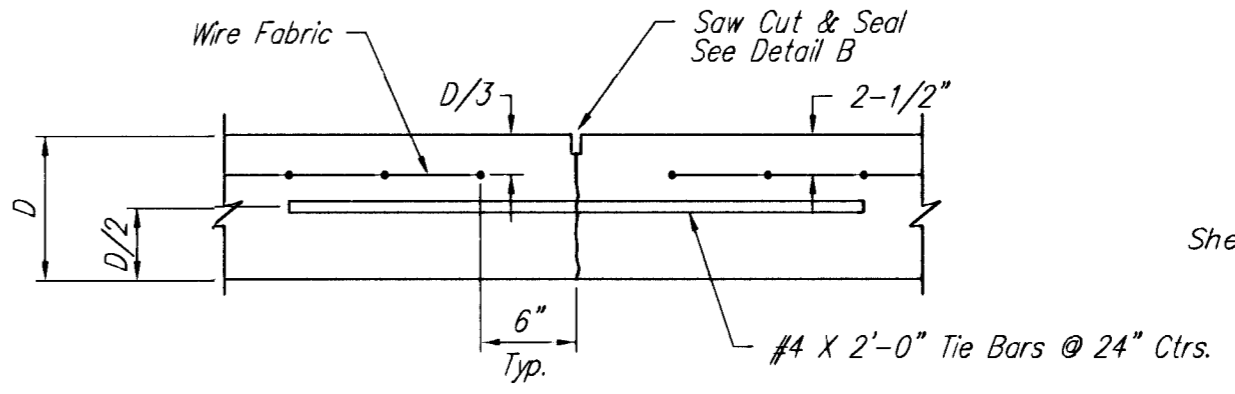
TOE WALL DETAIL
Sta. 34+14.08



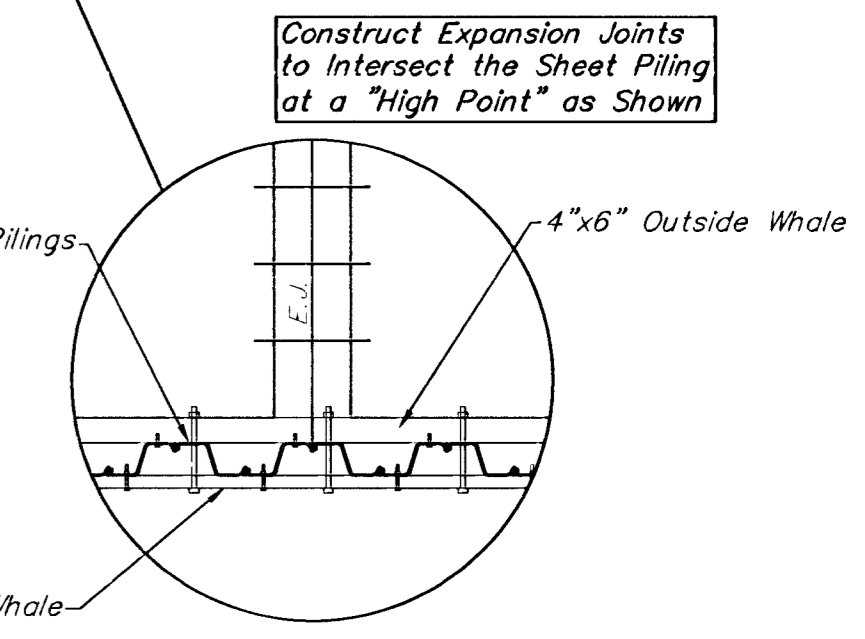
C.J. = Construction Joint
L.J. = Longitudinal Joint



CONTRACTION JOINT DETAIL (C.J.)



LONGITUDINAL JOINT DETAIL (L.J.)



PROJECT NUMBER 472-76-245-83324		SHEET NAME Concrete		ENGINEERING DIRECTORY F:\Hydraulic\Pond		CAPITAL IMPROVEMENT PROJECT 6" REINFORCED CONCRETE CHANNEL BOTTOM DETAIL HYDRAULIC AVENUE PAVING - INCIDENTAL DRAINAGE PROJECT - PHASE 2		BAUGHMAN COMPANY, P.A. ENGINEERING, SURVEYING, & PLANNING 316-262-7271 • 315 ELLIS • WICHITA, KANSAS 67211		SHEET 7 OF 47
DESIGN TPV/JFB	DRAWN TPV	APPROVED JFB	DATE Sept 2001	SCALE None	BAUGHMAN NO 99-09-E453					