

BENCHMARK:

BM #3 - RR Spike in West face of HLP, East side of Hydraulic, North of 45th St South, North of the Mobile home Park Entrance. Sta. 131+21, 41' Rt. Elev. = 82.72 (City Datum)

BM #4 - RR Spike in West face of 2nd HLP, South of 43rd St. South, East side of Hydraulic. Sta. 136+57, 41' Rt. Elev. = 82.34 (City Datum)

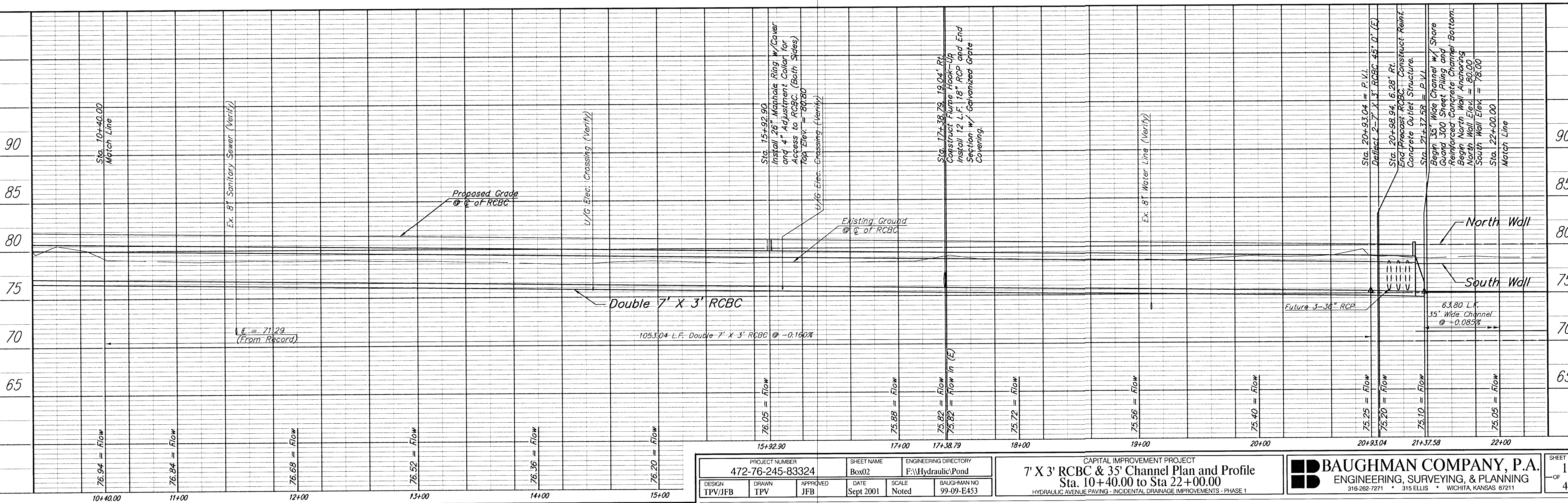
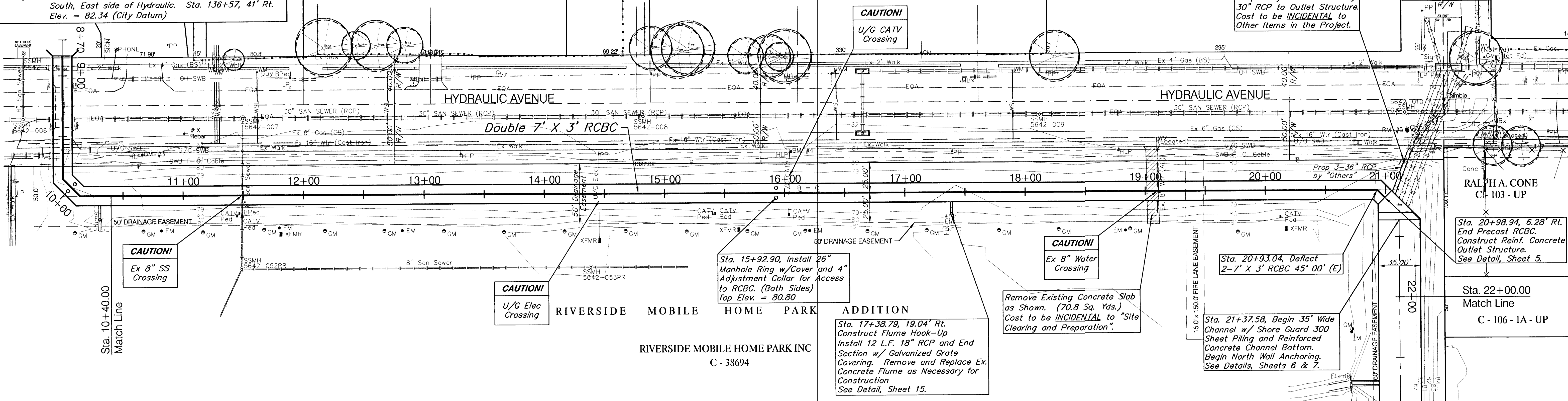
DOROTHY M. CATANESE, etvr
B - 22 - 1 - UP

SANTO & DOROTHY M. CATANESE
B - 22 - UP

B - 20 - UP

B - 18 - UP

SCALE:
1" = 40' HORIZONTAL
1" = 5' VERTICAL



PROJECT NUMBER 472-76-245-83324		SHEET NAME Box02		ENGINEERING DIRECTORY F:\Hydraulic\Pond	
DESIGN TPV/JFB	DRAWN TPV	APPROVED JFB	DATE Sept 2001	SCALE Noted	BAUGHMAN NO 99-09-E453

CAPITAL IMPROVEMENT PROJECT
7' X 3' RCBC & 35' Channel Plan and Profile
Sta. 10+40.00 to Sta 22+00.00
HYDRAULIC AVENUE PAVING - INCIDENTAL DRAINAGE IMPROVEMENTS - PHASE 1

BAUGHMAN COMPANY, P.A.
ENGINEERING, SURVEYING, & PLANNING
318-262-7271 • 315 ELLIS • WICHITA, KANSAS 67211

SHEET 10 OF 47

F:\Eng\Hydraulic\Pond\Box02.dwg Sun Sep 16 11:24:20 2001