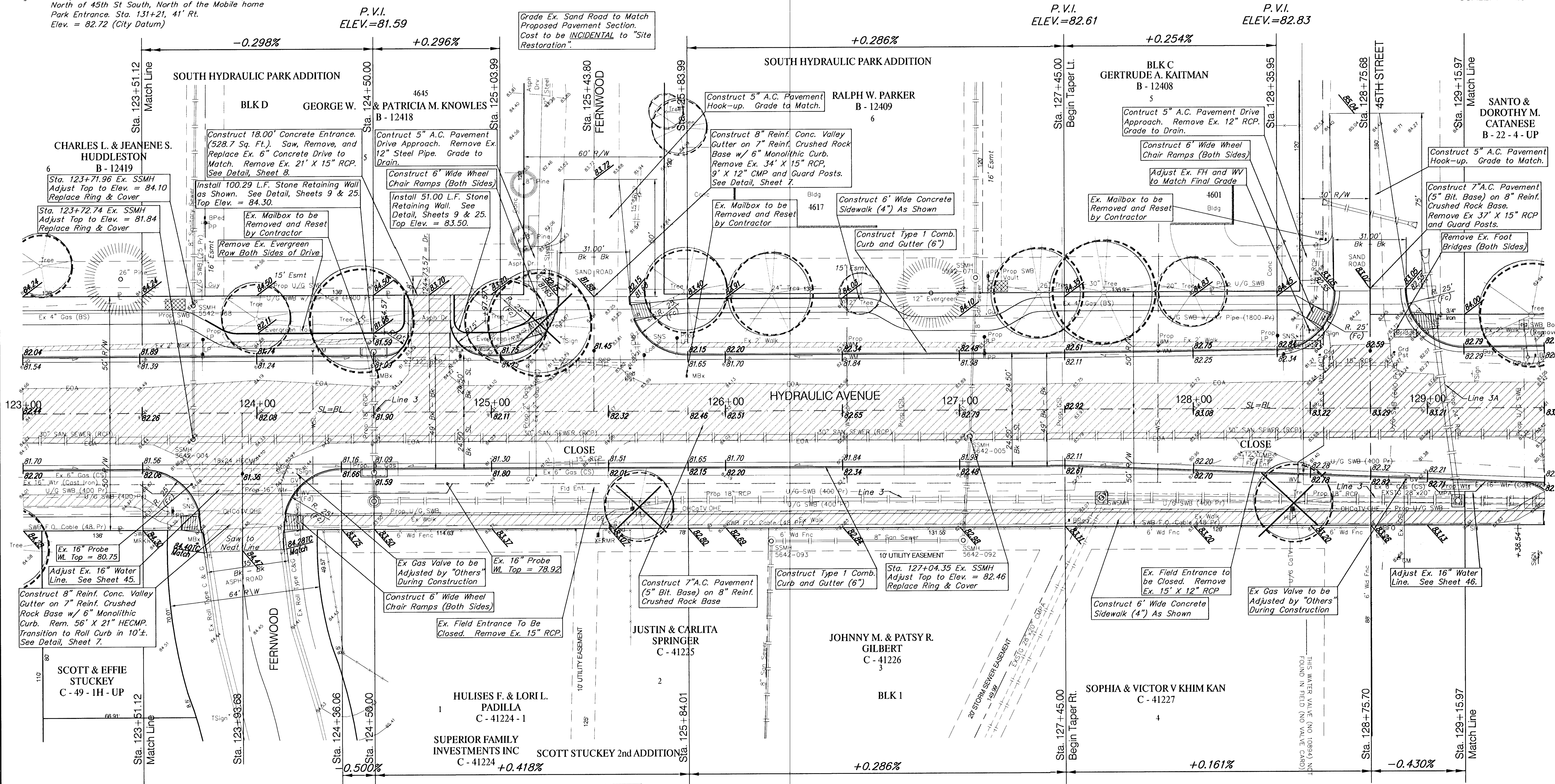
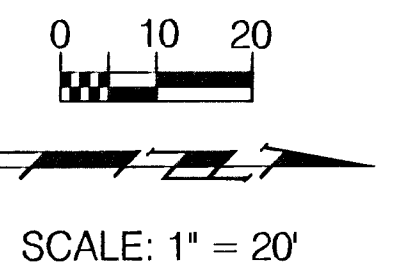


BENCHMARK:

BM #2 - RR Spike in West face of HLP, East side of Hydraulic, South of Fernwood and North of 46th St. South. Sta. 122+83, 41' Rt. Elev. = 85.33 (City Datum)

BM #3 - RR Spike in West face of HLP, East side of Hydraulic, North of 45th St South, North of the Mobile home Park Entrance. Sta. 131+21, 41' Rt. Elev. = 82.72 (City Datum)

Grade Ex. Sand Road to Match Proposed Pavement Section. Cost to be INCIDENTAL to "Site Restoration".



Grade Ex. Sand Road to Match Proposed Pavement Section. Cost to be INCIDENTAL to "Site Restoration".

P.V.I. ELEV.=81.59

P.V.I. ELEV.=82.61

P.V.I. ELEV.=82.83

P.V.I. ELEV.=81.59

P.V.I. ELEV.=82.15

P.V.I. ELEV.=82.61

P.V.I. ELEV.=82.82

Note:
Trees/Shrubs to be removed are marked thus:

Note:
Pavement, Sidewalks, and Etc. To Be Removed Are Indicated By:

PROJECT NUMBER 472-76-245-83324		SHEET NAME Pav02		ENGINEERING DIRECTORY F:\Eng\Hydraulic\pav	
DESIGN JFB	DRAWN STAFF	APPROVED JFB	DATE Sept. 2002	SCALE Noted	BAUGHMAN NO 99-09-E450

CAPITAL IMPROVEMENT PROJECT
HYDRAULIC AVENUE
47th STREET to MACARTHUR ROAD
PAVING PLAN - Sta. 123+51.12 - 129+15.68

BAUGHMAN COMPANY, P.A.
ENGINEERING, SURVEYING, & PLANNING
316-262-7271 • 315 ELLIS • WICHITA, KANSAS 67211

SHEET 12 OF 102