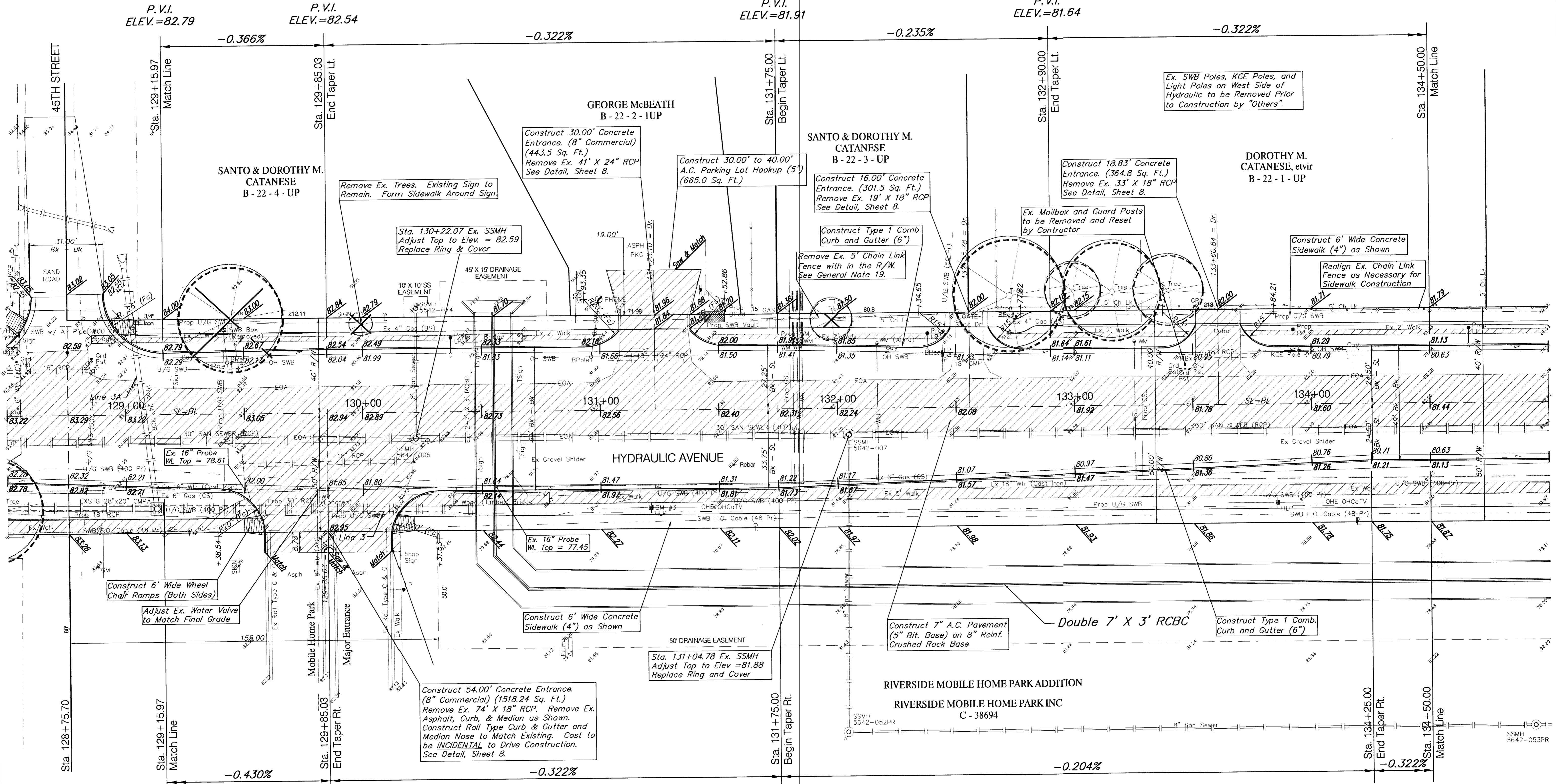
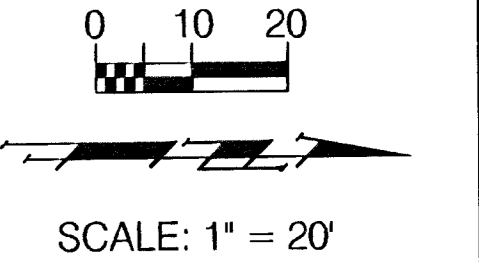


**BENCHMARK:**

BM #3 - RR Spike in West face of HLP, East side of Hydraulic,  
North of 45th St South, North of the Mobile home  
Park Entrance. Sta. 131+21, 41' Rt.  
Elev. = 82.72 (City Datum)



**Note:**  
Trees/Shrubs to be removed are marked thus:

**Note:**  
Pavement, Sidewalks, and Etc. To Be Removed Are Indicated By:

PROJECT NUMBER 472-76-245-83324		SHEET NAME PAV03		ENGINEERING DIRECTORY F:\Eng\Hydraulic\pav	
DESIGN JFB	DRAWN STAFF	APPROVED JFB	DATE Sept. 2002	SCALE Noted	BAUGHMAN NO 99-09-E450

CAPITAL IMPROVEMENT PROJECT  
**HYDRAULIC AVENUE**  
47th STREET to MACARTHUR ROAD  
PAVING PLAN - Sta. 129+15.88 - 134+50.00

**BAUGHMAN COMPANY, P.A.**  
ENGINEERING, SURVEYING, & PLANNING  
316-262-7271 • 315 ELLIS • WICHITA KANSAS 67211

SHEET  
OF  
13  
102