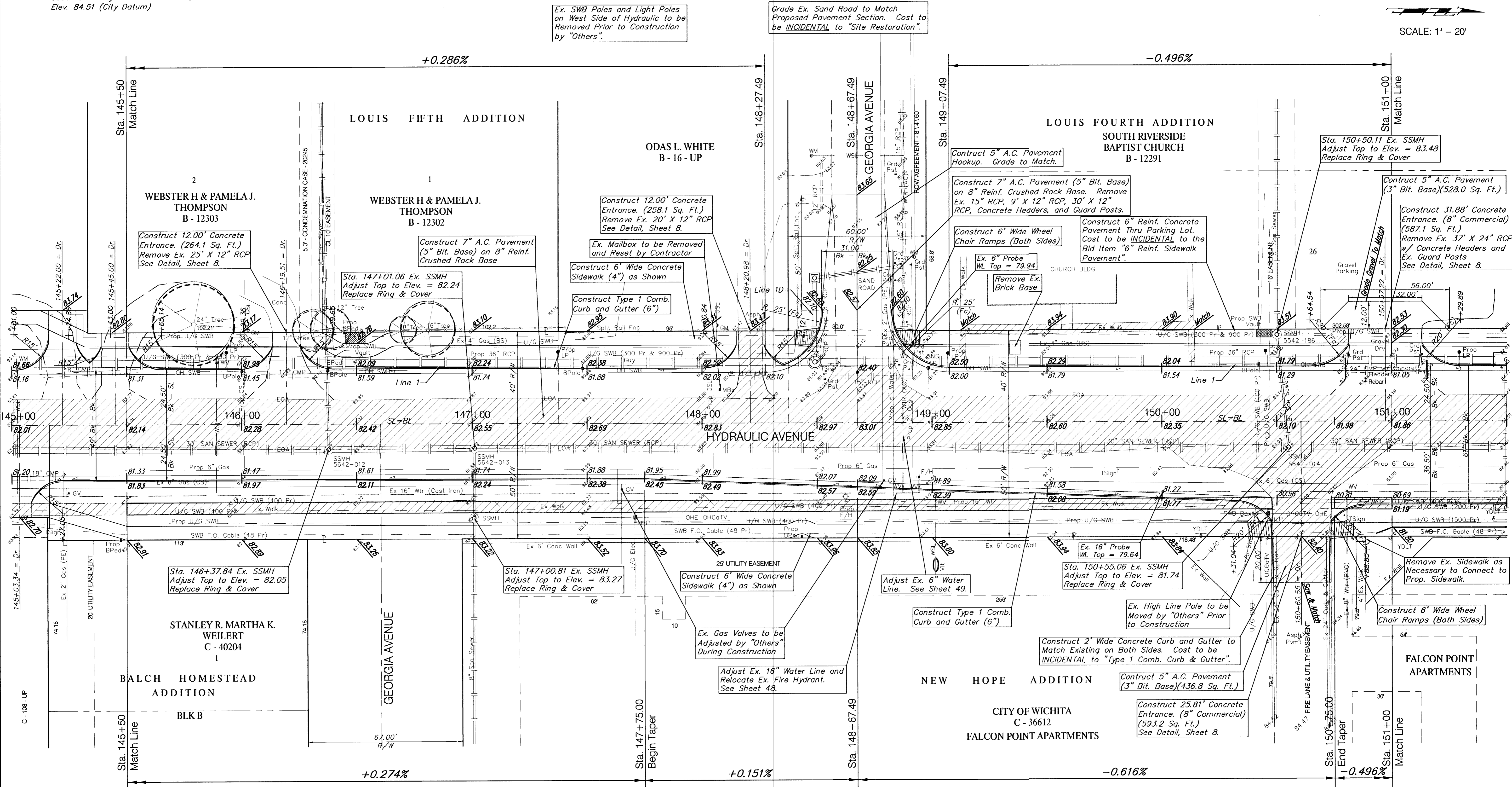
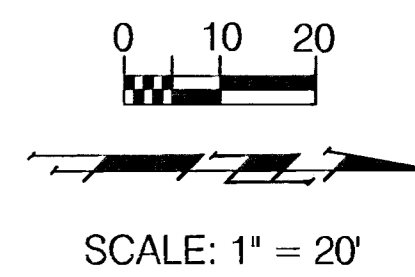


**BENCHMARK:**

BM #6 - RR Spike in West face of HLP, East side of Hydraulic,  
South of Georgia St. Sta. 147+70, 43' Rt.  
Elev. 84.51 (City Datum)



Ex. SWB Poles and Light Poles on West Side of Hydraulic to be Removed Prior to Construction by "Others".

Grade Ex. Sand Road to Match Proposed Pavement Section. Cost to be INCIDENTAL to "Site Restoration".

Construct 12.00' Concrete Entrance. (264.1 Sq. Ft.)  
Remove Ex. 25' X 12" RCP  
See Detail, Sheet 8.

Construct 7" A.C. Pavement (5" Bit. Base) on 8" Reinf. Crushed Rock Base

Construct 12.00' Concrete Entrance. (258.1 Sq. Ft.)  
Remove Ex. 20' X 12" RCP  
See Detail, Sheet 8.

Ex. Mailbox to be Removed and Reset by Contractor

Construct 6" Wide Concrete Sidewalk (4") as Shown

Construct Type 1 Comb. Curb and Gutter (6")

Construct 5" A.C. Pavement Hookup. Grade to Match.

Construct 7" A.C. Pavement (5" Bit. Base) on 8" Reinf. Crushed Rock Base. Remove Ex. 15" RCP, 9' X 12" RCP, 30' X 12" RCP, Concrete Headers, and Guard Posts.

Construct 6" Wide Wheel Chair Ramps (Both Sides)

Ex. 6" Probe Wt. Top = 79.94

Remove Ex. Brick Base

Construct 6" Reinf. Concrete Pavement Thru Parking Lot. Cost to be INCIDENTAL to the Bid Item "6" Reinf. Sidewalk Pavement".

Sta. 150+50.11 Ex. SSMH Adjust Top to Elev. = 83.48  
Replace Ring & Cover

Construct 5" A.C. Pavement (3" Bit. Base)(528.0 Sq. Ft.)

Construct 31.88' Concrete Entrance. (8" Commercial) (587.1 Sq. Ft.)  
Remove Ex. 37' X 24" RCP w/ Concrete Headers and Ex. Guard Posts  
See Detail, Sheet 8.

Sta. 146+37.84 Ex. SSMH Adjust Top to Elev. = 82.05  
Replace Ring & Cover

Sta. 147+00.81 Ex. SSMH Adjust Top to Elev. = 83.27  
Replace Ring & Cover

Construct 6" Wide Concrete Sidewalk (4") as Shown

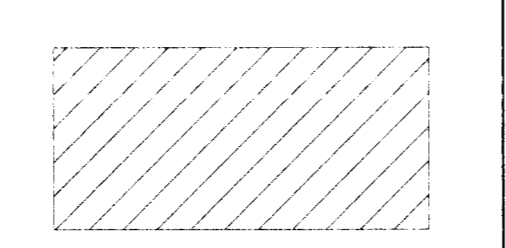
Adjust Ex. 6" Water Line. See Sheet 49.

Sta. 150+55.06 Ex. SSMH Adjust Top to Elev. = 81.74  
Replace Ring & Cover

Remove Ex. Sidewalk as Necessary to Connect to Prop. Sidewalk.

Construct 6" Wide Wheel Chair Ramps (Both Sides)

**Note:**  
Pavement, Sidewalks, and Etc. To Be Removed Are Indicated By:



P.V.I. ELEV.=82.45

P.V.I. ELEV.=82.59

Ex. Yard Lights in the New Hope Addition Shall be Removed and Relocated by the Contractor. Cost to be INCIDENTAL "Site Restoration".

P.V.I. ELEV.=81.31

PROJECT NUMBER 472-76-245-83324		SHEET NAME Pav06		ENGINEERING DIRECTORY F:\Eng\Hydraulic\pav	
DESIGN JFB	DRAWN STAFF	APPROVED JFB	DATE Sept. 2002	SCALE Noted	BAUGHMAN NO 99-09-E450

CAPITAL IMPROVEMENT PROJECT  
**HYDRAULIC AVENUE**  
47th STREET TO MACARTHUR ROAD  
PAVING PLAN - Sta. 145+50.00 - 151+00.00

**BAUGHMAN COMPANY, P.A.**  
ENGINEERING, SURVEYING, & PLANNING  
316-282-7271 • 315 ELLIS • WICHITA, KANSAS 67211

SHEET 16 OF 102