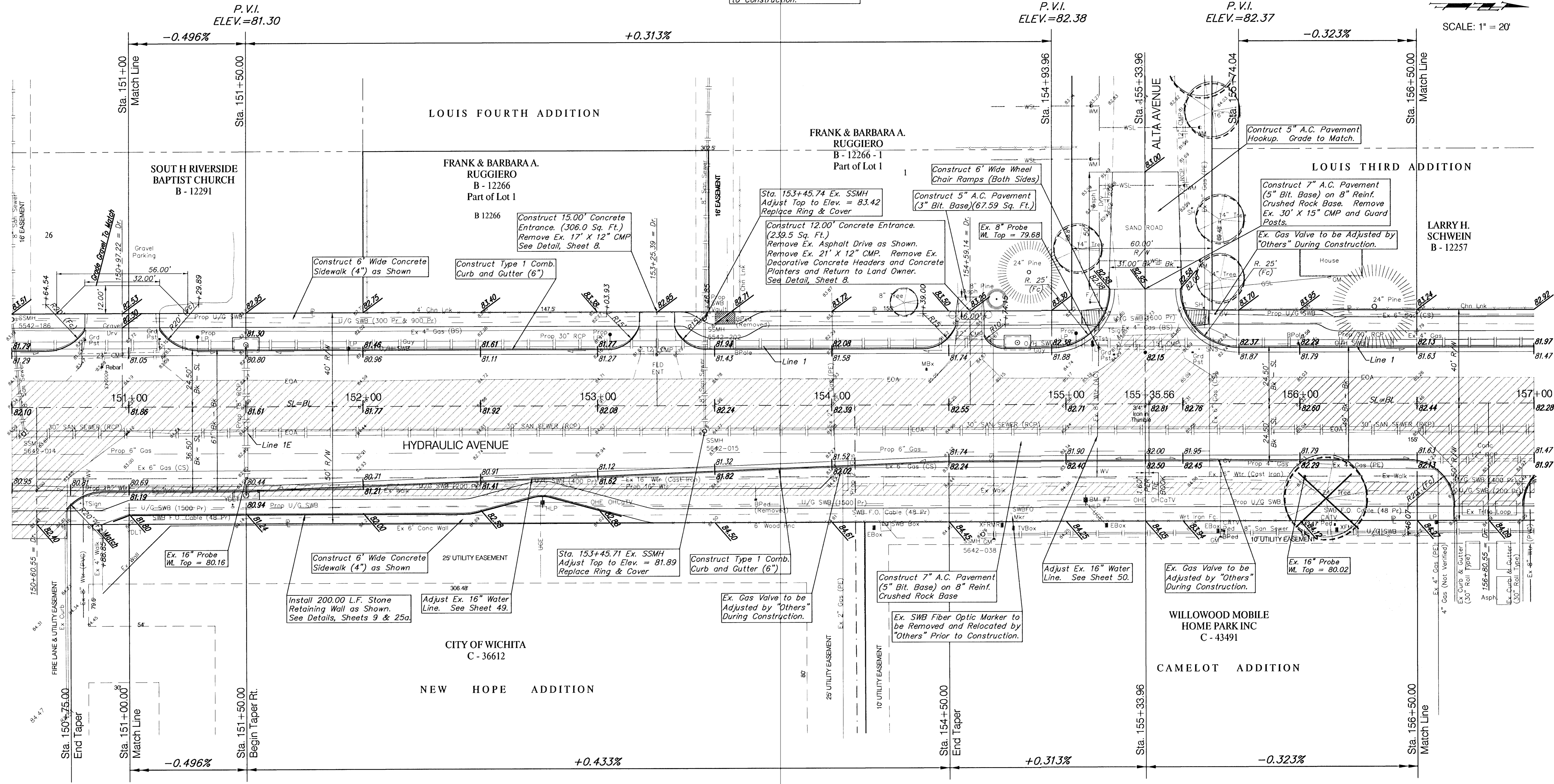
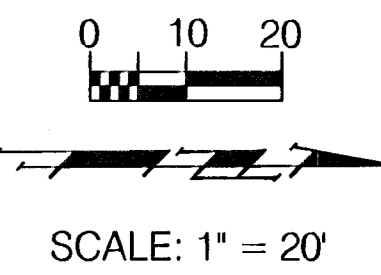


BENCHMARK:

BM #7 - RR Spike in West face of HLP, East side of Hydraulic,
South of Alta Street. Sta. 155+07, 41' Rt.
Elev. = 86.12 (City Datum)

Grade Ex. Sand Road to Match
Proposed Pavement Section. Cost to
be INCIDENTAL to "Site Restoration".

Ex. SWB Poles and Light Poles
on West Side of Hydraulic to
be Removed by "Others" Prior
to Construction.



Note:
Pavement, Sidewalks, and
Etc. To Be Removed Are
Indicated By:

Note:
Trees/Shrubs to be
removed are marked thus:

PROJECT NUMBER 472-76-245-83324	SHEET NAME PAV07	ENGINEERING DIRECTORY F:\Eng\Hydraulic\pav
DESIGN JFB	DRAWN STAFF	APPROVED JFB
DATE Sept. 2002	SCALE NOTED	BAUGHMAN NO 99-09-E450

CAPITAL IMPROVEMENT PROJECT
HYDRAULIC AVENUE
47th STREET to MACARTHUR ROAD
PAVING PLAN - Sta. 151+00.00 - 156+50.00

BAUGHMAN COMPANY, P.A.
ENGINEERING, SURVEYING, & PLANNING
316-262-7271 • 315 ELLIS • WICHITA, KANSAS 67211