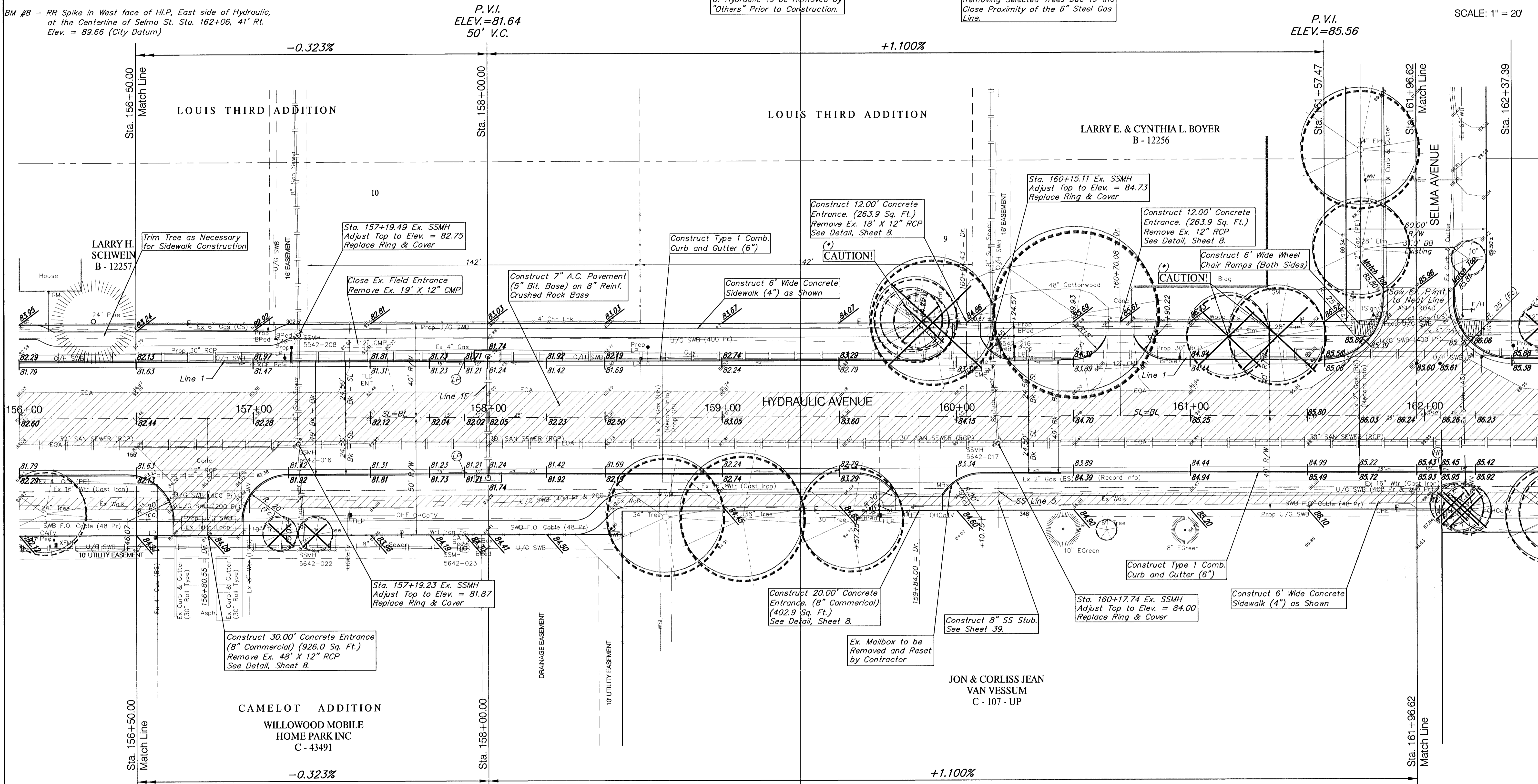
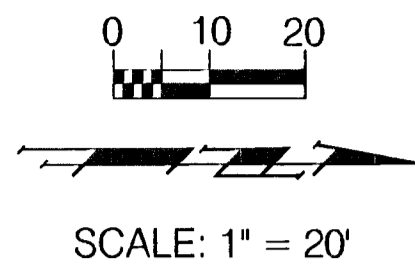


BENCHMARK:

BM #7 - RR Spike in West face of HLP, East side of Hydraulic, South of Alta Street. Sta. 155+07, 41' Rt. Elev. = 86.12 (City Datum)
 BM #8 - RR Spike in West face of HLP, East side of Hydraulic, at the Centerline of Selma St. Sta. 162+06, 41' Rt. Elev. = 89.66 (City Datum)



Ex. SWB Poles, KGE Pole, and Light Poles on the West Side of Hydraulic to be Removed by "Others" Prior to Construction.

CAUTION!
 Contractor is to Use Caution when Removing Selected Trees Due to the Close Proximity of the 6" Steel Gas Line.

Note:
 Pavement, Sidewalks, and Etc. To Be Removed Are Indicated By:

Note:
 Trees/Shrubs to be removed are marked thus:

PROJECT NUMBER 472-76-245-83324			SHEET NAME Pav08		ENGINEERING DIRECTORY F:\Eng\Hydraulic\pav	
DESIGN JFB	DRAWN STAFF	APPROVED JFB	DATE Sept. 2002	SCALE Noted	BAUGHMAN NO 99-09-E450	
CAPITAL IMPROVEMENT PROJECT HYDRAULIC AVENUE 47th STREET to MACARTHUR ROAD PAVING PLAN - Sta. 156+50.00 - 161+96.62						BAUGHMAN COMPANY, P.A. ENGINEERING, SURVEYING, & PLANNING 316-262-7271 • 315 ELLIS • WICHITA, KANSAS 67211
						SHEET OF 18 102