

BENCHMARK:

BM #8 - RR Spike in West face of HLP, East side of Hydraulic, at the Centerline of Selma St. Sta. 162+06, 41' Rt. Elev. = 89.66 (City Datum)

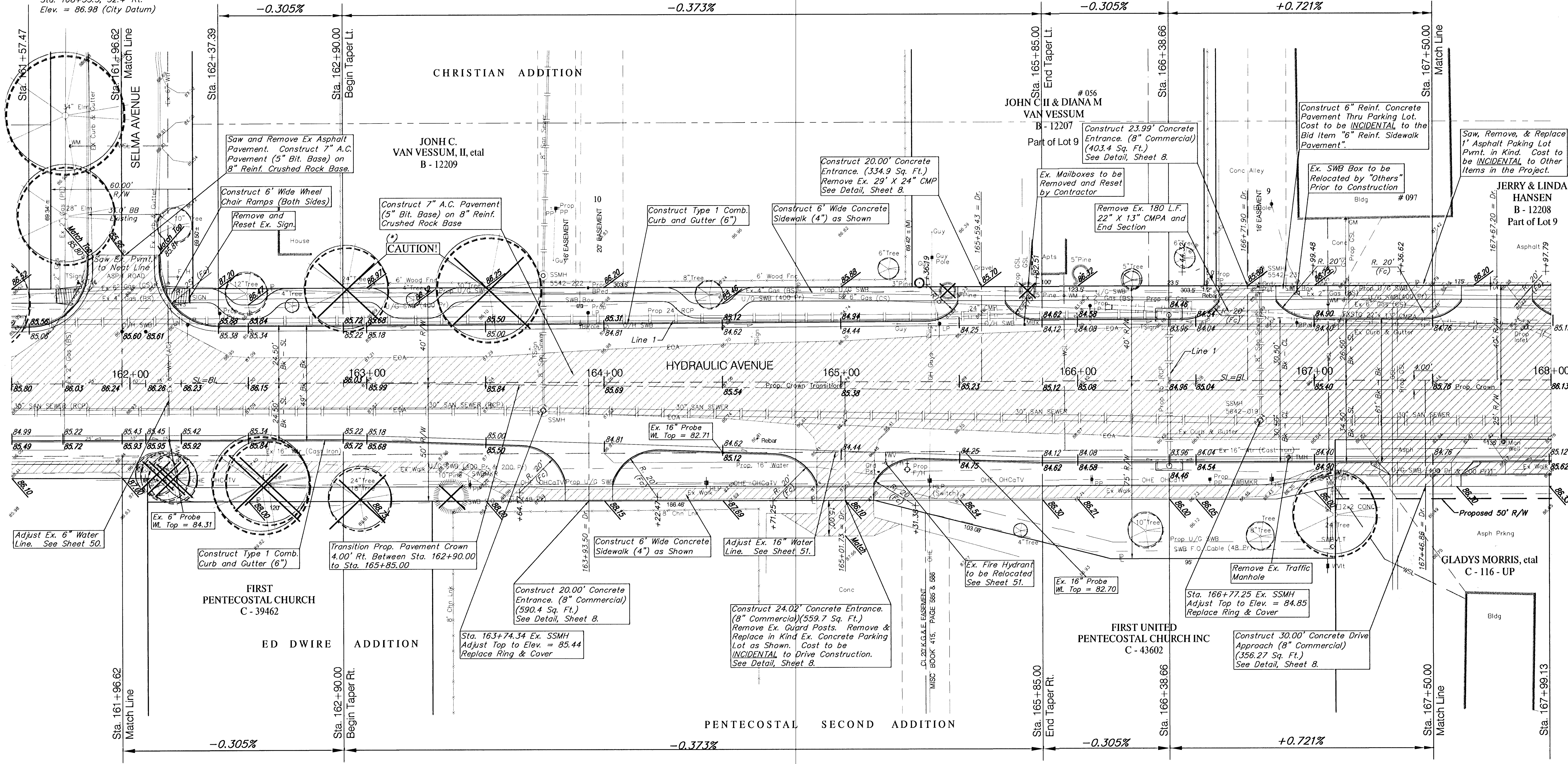
BM #9 - City of Wichita Bench Mark Disc, 48.6' South and 32.4' West of Centerlines Hydraulic and Mac Arthur Sta. 168+35.3, 32.4' Rt. Elev. = 86.98 (City Datum)

CAUTION!
Contractor is to Use Caution when Removing Selected Trees Due to the Close Proximity of the 6" and 4" Steel Gas Lines.

Ex. SWB Poles and Light Poles on the West Side of Hydraulic to be Removed by "Others" Prior to Construction

P.V.I. ELEV. = 84.62

P.V.I. ELEV. = 84.46



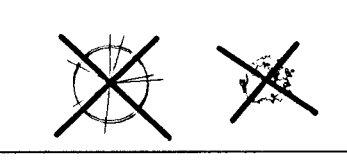
P.V.I. ELEV. = 86.00
50' VC

P.V.I. ELEV. = 85.72

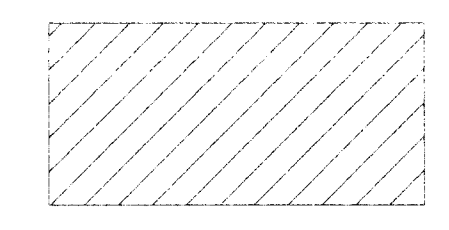
P.V.I. ELEV. = 84.62

P.V.I. ELEV. = 84.46

Note:
Trees/Shrubs to be removed are marked thus:



Note:
Pavement, Sidewalks, and Etc. To Be Removed Are Indicated By:



PROJECT NUMBER 472-76-245-83324		SHEET NAME Pav09		ENGINEERING DIRECTORY F:\Eng\Hydraulic\pav	
DESIGN JFB	DRAWN STAFF	APPROVED JFB	DATE Sept. 2002	SCALE Noted	BAUGHMAN NO 99-09-E450

CAPITAL IMPROVEMENT PROJECT
HYDRAULIC AVENUE
47th STREET to MACARTHUR ROAD
PAVING PLAN - Sta. 161+96.62 - 167+50.00

BAUGHMAN COMPANY, P.A.
ENGINEERING, SURVEYING, & PLANNING
316-262-7271 • 315 ELLIS • WICHITA, KANSAS 67211

SHEET 19 OF 102