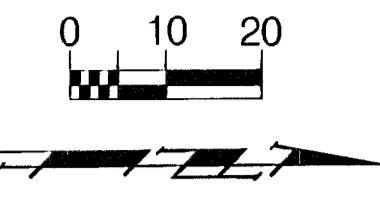


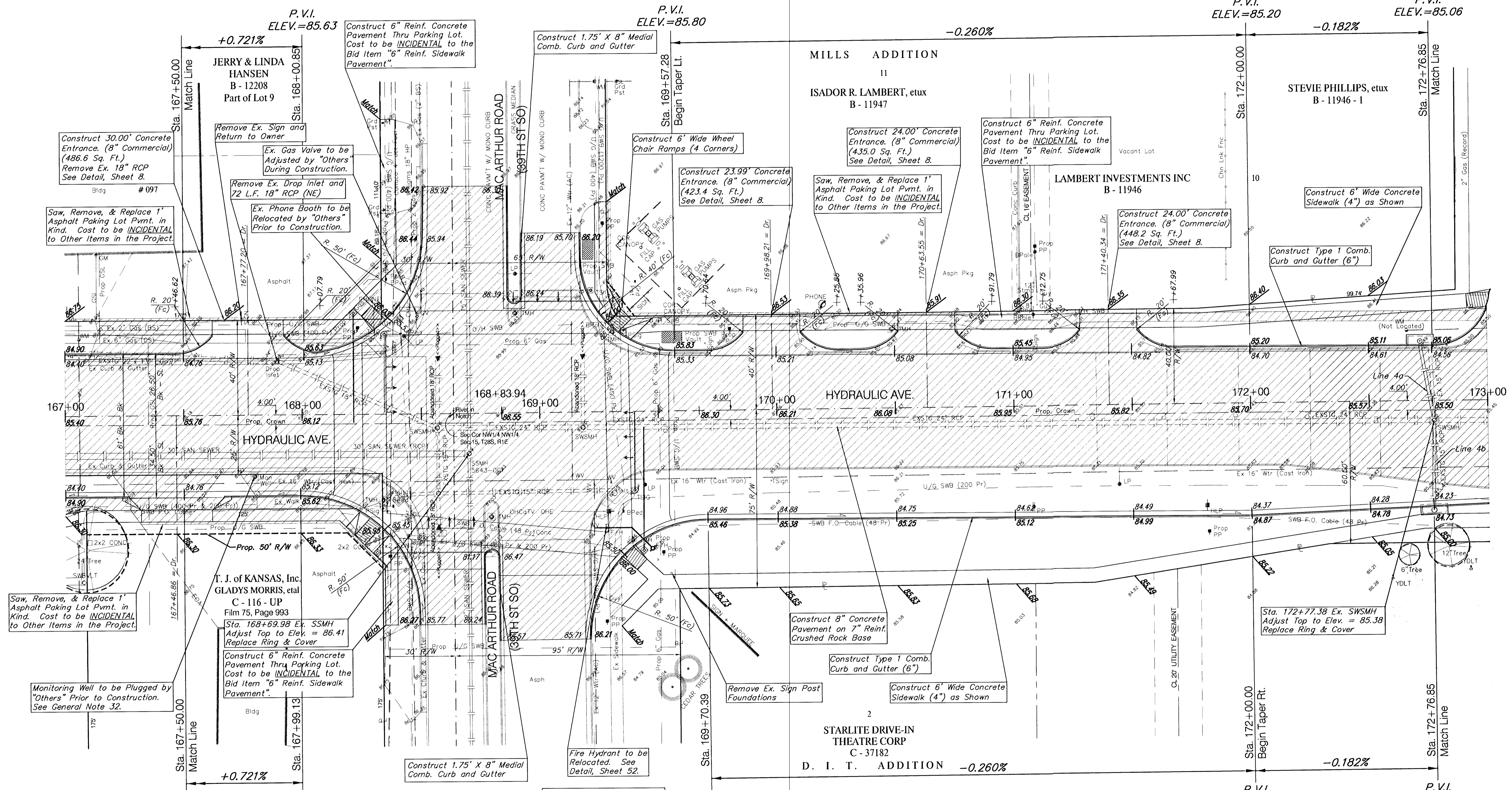
BENCHMARK:

BM #9 - City of Wichita Bench Mark Disc, 48.6' South and 32.4' West of Centerlines Hydraulic and Mac Arthur Sta. 168+35.3, 32.4' Rt. Elev. = 86.98 (City Datum)



SCALE: 1" = 20'

Ex. SWB Poles, Power Poles, and Light Poles That Conflict With the Proposed Construction to be Removed by "Others" Prior to Construction.



Saw, Remove, & Replace 1' Asphalt Paving Lot Pmnt. in Kind. Cost to be INCIDENTAL to Other Items in the Project.

Remove Ex. Sign and Return to Owner

Remove Ex. Drop Inlet and 72 L.F. 18" RCP (NE)

Ex. Phone Booth to be Relocated by "Others" Prior to Construction.

Construct 6" Reinf. Concrete Pavement Thru Parking Lot. Cost to be INCIDENTAL to the Bid Item "6" Reinf. Sidewalk Pavement".

Construct 1.75' X 8" Medial Comb. Curb and Gutter

Construct 6" Wide Wheel Chair Ramps (4 Corners)

Construct 23.99' Concrete Entrance. (8" Commercial) (423.4 Sq. Ft.) See Detail, Sheet 8.

Construct 24.00' Concrete Entrance. (8" Commercial) (435.0 Sq. Ft.) See Detail, Sheet 8.

Saw, Remove, & Replace 1' Asphalt Paving Lot Pmnt. in Kind. Cost to be INCIDENTAL to Other Items in the Project.

Construct 6" Reinf. Concrete Pavement Thru Parking Lot. Cost to be INCIDENTAL to the Bid Item "6" Reinf. Sidewalk Pavement".

Construct 24.00' Concrete Entrance. (8" Commercial) (448.2 Sq. Ft.) See Detail, Sheet 8.

Construct 6" Wide Concrete Sidewalk (4") as Shown

Construct Type 1 Comb. Curb and Gutter (6")

Monitoring Well to be Plugged by "Others" Prior to Construction. See General Note 32.

T. J. of KANSAS, Inc. GLADYS MORRIS, et al C - 116 - UP Film 75, Page 993

Sta. 168+69.98 Ex. SSMH Adjust Top to Elev. = 86.41 Replace Ring & Cover

Construct 6" Reinf. Concrete Pavement Thru Parking Lot. Cost to be INCIDENTAL to the Bid Item "6" Reinf. Sidewalk Pavement".

Construct 1.75' X 8" Medial Comb. Curb and Gutter

Fire Hydrant to be Relocated. See Detail, Sheet 52.

Remove Ex. Sign Post Foundations

Construct 8" Concrete Pavement on 7" Reinf. Crushed Rock Base

Construct Type 1 Comb. Curb and Gutter (6")

Construct 6" Wide Concrete Sidewalk (4") as Shown

Sta. 172+77.38 Ex. SWSMH Adjust Top to Elev. = 85.38 Replace Ring & Cover

NOTE:
Trees/Shrubs to be removed are marked thus:

Ex SWS Manholes in the intersection of Hydraulic and MacArthur are to be removed as necessary for construction and Ex. SWS pipes are to be plugged and abandoned in place. See Detail, Sheet 10.

Note:
Pavement, Sidewalks, and Etc. To Be Removed Are Indicated By:

Contractor to Contact Kevin Phillips with Williams Natural Gas Company at 529-6601 to Coordinate Gas Line Markers/Vents Relocation During Intersection Construction.

PROJECT NUMBER 472-76-245-83324		SHEET NAME PAV10		ENGINEERING DIRECTORY F:Eng/Hydraulic/pav	
DESIGN JFB	DRAWN STAFF	APPROVED JFB	DATE Sept. 2002	SCALE Noted	BAUGHMAN NO 99-09-E450

CAPITAL IMPROVEMENT PROJECT
HYDRAULIC AVENUE
47th STREET to MACARTHUR ROAD
PAVING PLAN - Sta. 167+50.00 - 172+76.85

BAUGHMAN COMPANY, P.A.
ENGINEERING, SURVEYING, & PLANNING
316-262-7271 • 315 ELLIS • WICHITA, KANSAS 67211

SHEET 20 OF 102