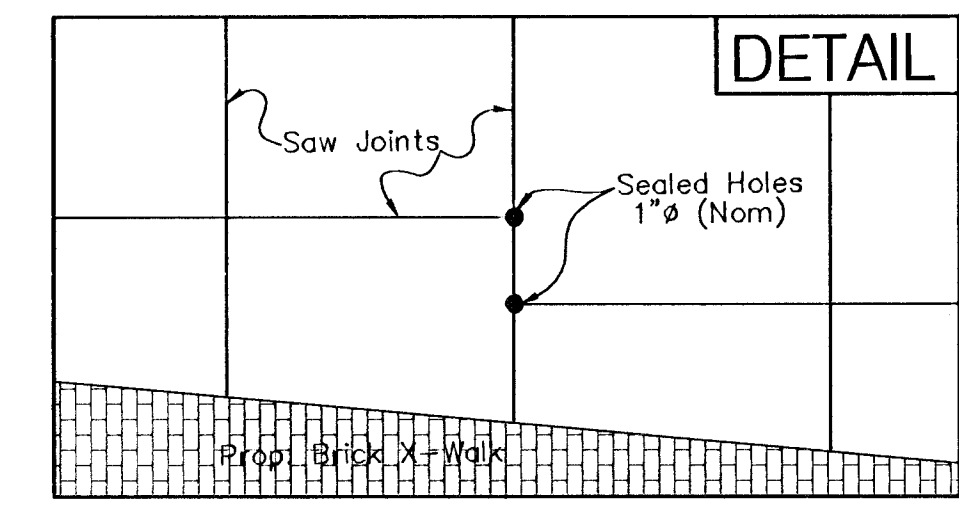
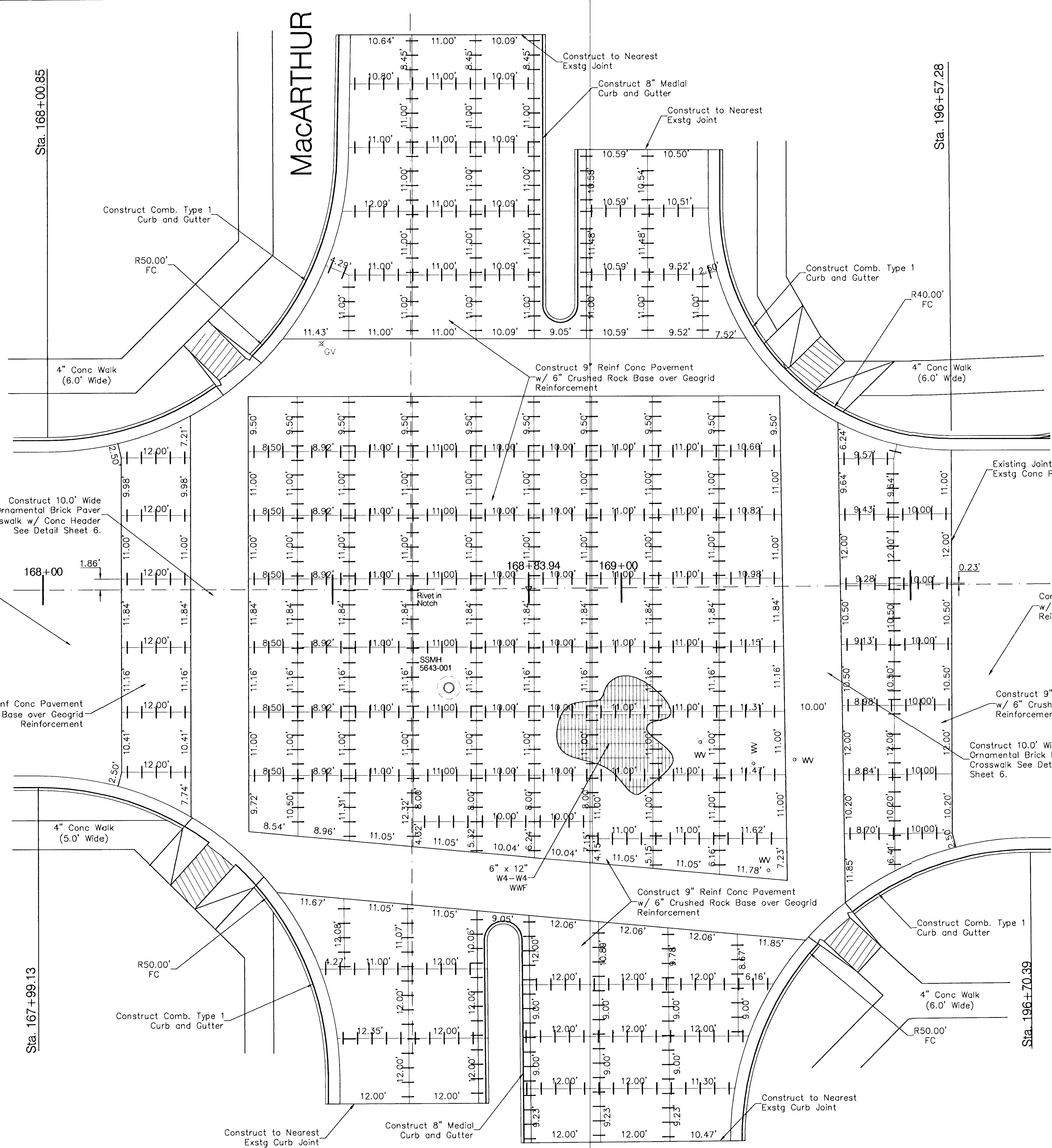


**HYDRAULIC**



**\*NOTE\***  
 At all locations where joints are not congruent through pavement sections, Contractor shall drill full pavement depth & seal. (See Detail This Sheet)

PROJECT NUMBER 742-76-245-83324		SHEET NAME Jointplan		ENGINEERING DIRECTORY F:\Eng\Hydraulic\Pav		CAPITAL IMPROVEMENT PROJECT <b>HYDRAULIC AVENUE &amp; MACARTHUR ROAD INTERSECTION JOINT PATTERN</b> HYDRAULIC AVENUE PAVING - 47TH STREET SOUTH TO MACARTHUR ROAD		<b>BAUGHMAN COMPANY, P.A.</b> ENGINEERING, SURVEYING, & PLANNING 316-262-7271 • 315 ELLIS • WICHITA, KANSAS 67211	SHEET <b>22</b> OF <b>102</b>
DESIGN JFB	DRAWN STAFF	APPROVED JFB	DATE Sept. 2002	SCALE Noted	BAUGHMAN NO 99-09-E450				