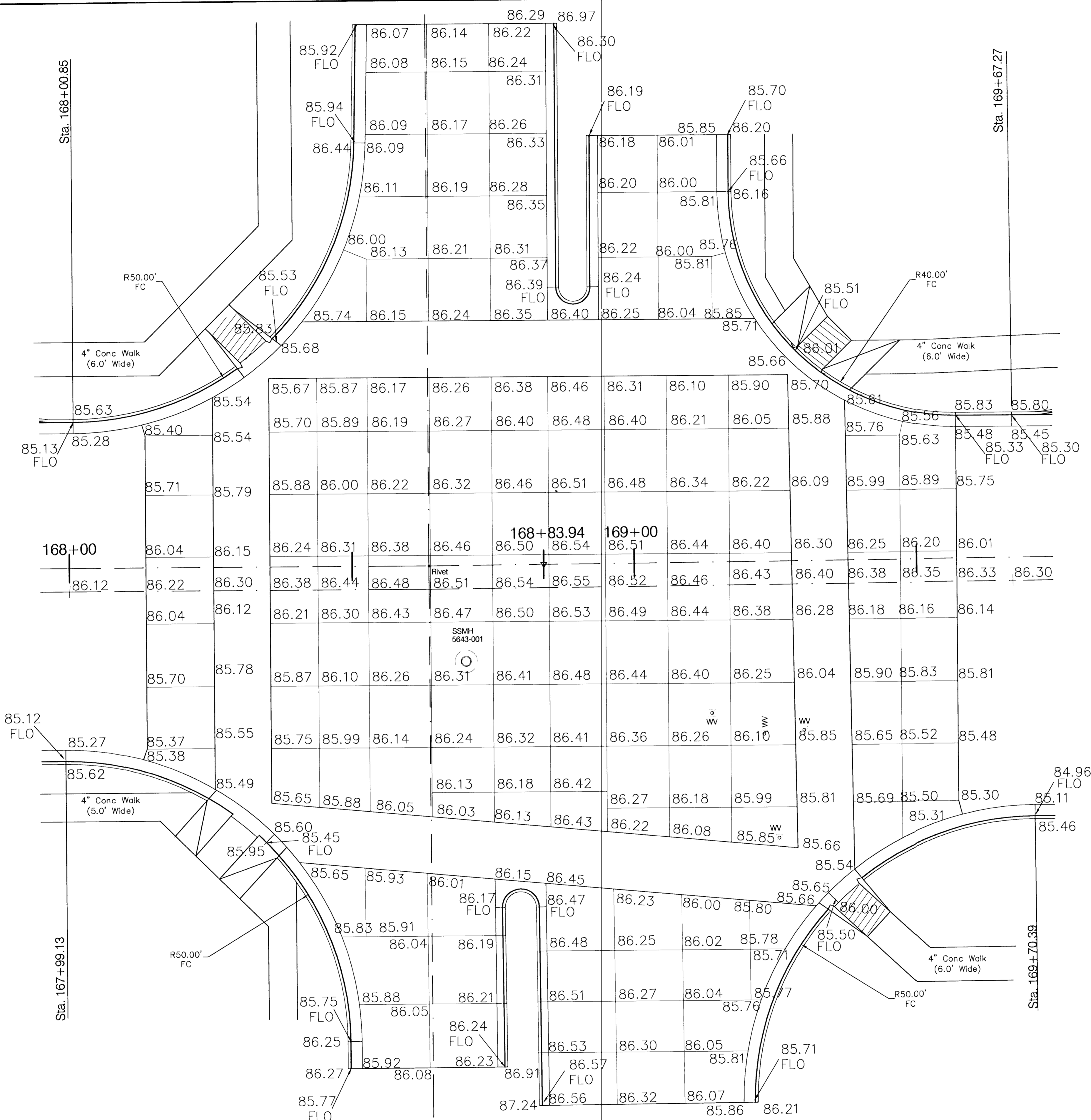
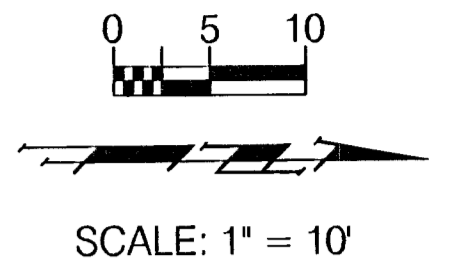


**BENCHMARK:**  
 BM #9 - City of Wichita Bench Mark Disc, 48.6' South and  
 32.4' West of Centerlines Hydraulic and Mac Arthur  
 Sta. 168+35.3, 32.4' Rt.  
 Elev. = 86.98 (City Datum)



PROJECT NUMBER 472-76-245-83324		SHEET NAME GRADE int		ENGINEERING DIRECTORY F:\Eng\Hydraulic\pav	
DESIGN JFB	DRAWN STAFF	APPROVED JFB	DATE Sept. 2002	SCALE Noted	BAUGHMAN NO 99-09-E450

CAPITAL IMPROVEMENT PROJECT  
**HYDRAULIC AVENUE & MACARTHUR ROAD**  
**INTERSECTION GRADING PLAN**  
HYDRAULIC AVENUE PAVING - 47TH STREET SOUTH TO MACARTHUR ROAD

**BAUGHMAN COMPANY, P.A.**  
 ENGINEERING, SURVEYING, & PLANNING  
316-262-7271 • 315 ELLIS • WICHITA, KANSAS 67211

SHEET  
23  
OF  
102