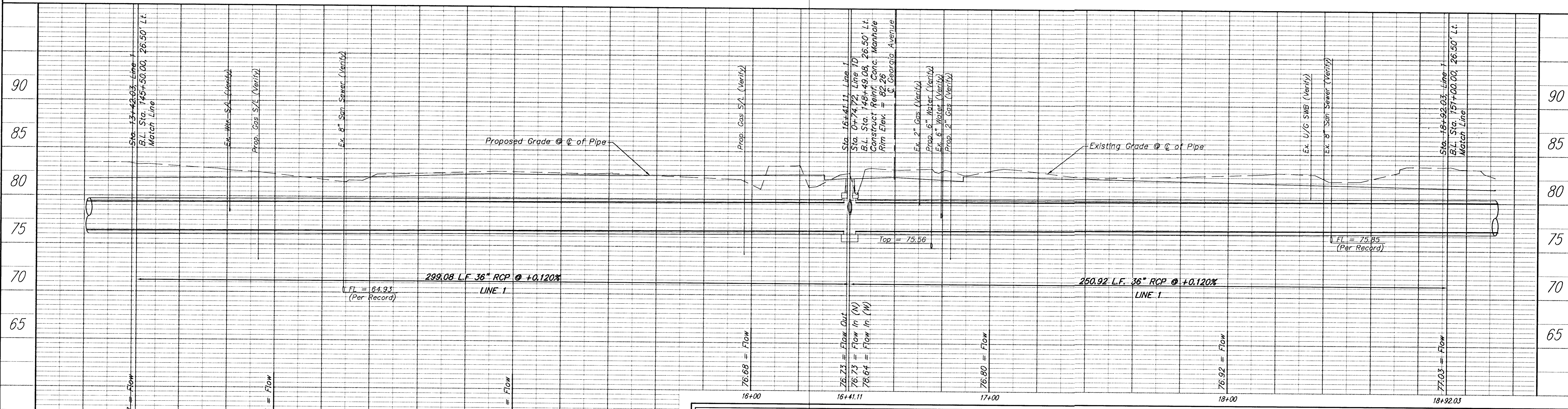
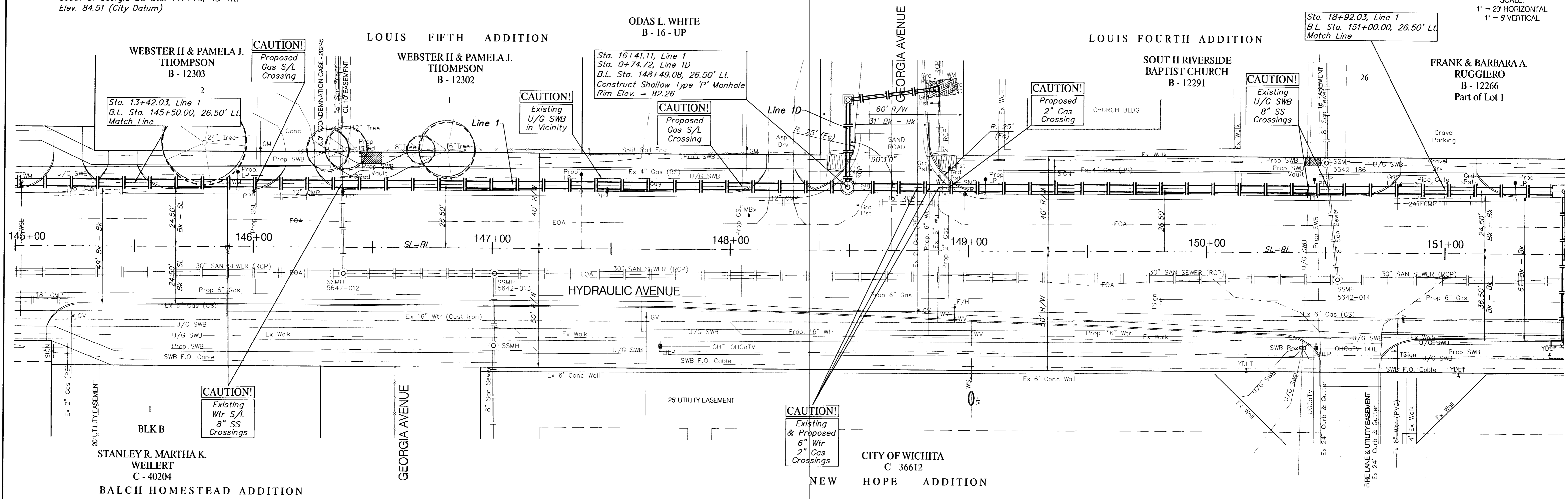


BENCHMARK:

BM #6 - RR Spike in West face of HLP, East side of Hydraulic, South of Georgia St. Sta. 147+70, 43' Rt. Elev. 84.51 (City Datum)

SCALE:
1" = 20' HORIZONTAL
1" = 5' VERTICAL



PROJECT NUMBER 472-76-245-83324		SHEET NAME SWS02		ENGINEERING DIRECTORY F:\Eng\Hydraulic\sws	
DESIGN JFB	DRAWN KWR	APPROVED JFB	DATE Sept. 2002	SCALE Noted	BAUGHMAN NO 99-09-E450

CAPITAL IMPROVEMENT PROJECT
STORM SEWER IMPROVEMENTS - Line 1
B.L. Sta. 145+50.00 to B.L. Sta. 151+00.00
HYDRAULIC AVENUE PAVING - 4TH STREET SOUTH TO MACARTHUR ROAD

BAUGHMAN COMPANY, P.A.
ENGINEERING, SURVEYING, & PLANNING
316-282-7271 • 315 ELLIS • WICHITA, KANSAS 67211