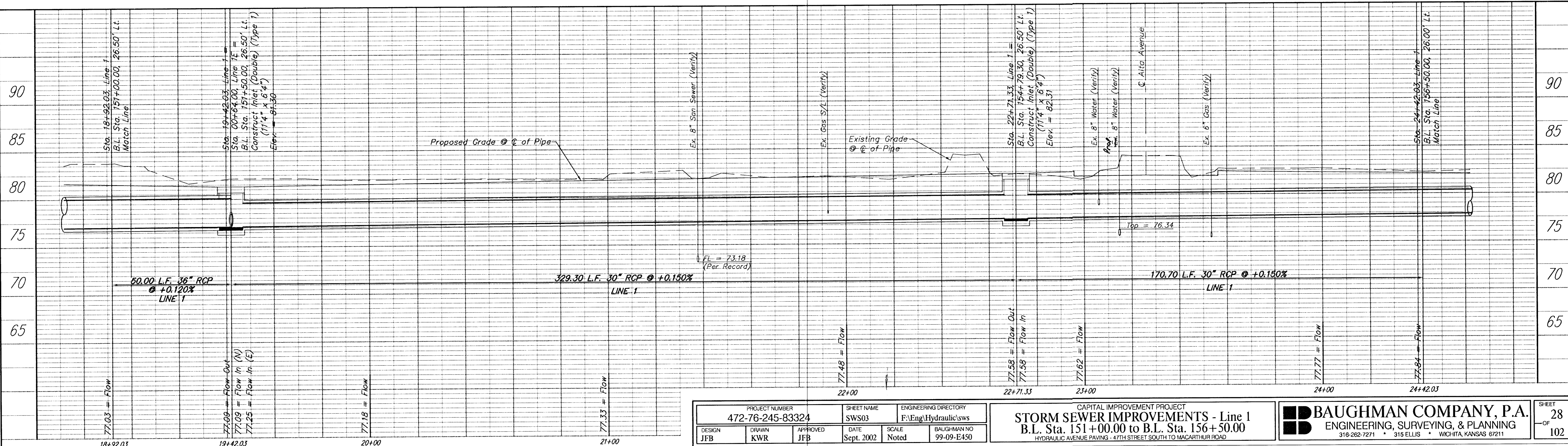
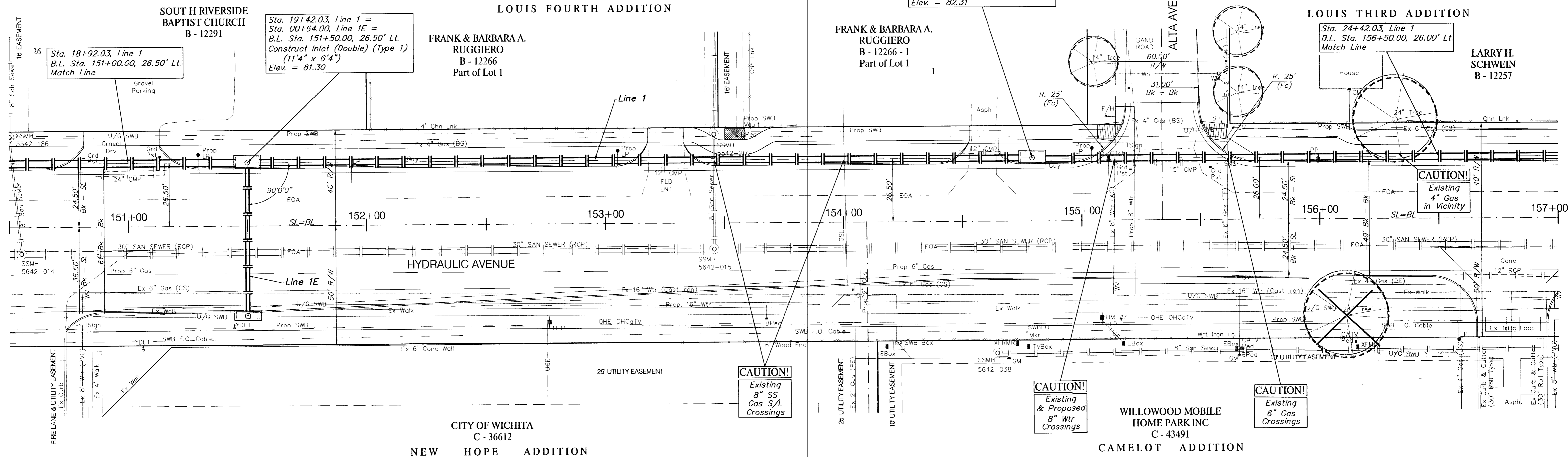


**BENCHMARK:**

BM #7 - RR Spike in West face of HLP, East side of Hydraulic,  
South of Alta Street. Sta. 155+07, 41' Rt.  
Elev. = 86.12 (City Datum)

SCALE:  
1" = 20' HORIZONTAL  
1" = 5' VERTICAL



|                                    |              |                     |                    |  |                            |
|------------------------------------|--------------|---------------------|--------------------|--|----------------------------|
| PROJECT NUMBER<br>472-76-245-83324 |              | SHEET NAME<br>SWS03 |                    | ENGINEERING DIRECTORY<br>F:Eng/Hydraulic/sws |                            |
| DESIGN<br>JFB                      | DRAWN<br>KWR | APPROVED<br>JFB     | DATE<br>Sept. 2002 | SCALE<br>Noted                               | BAUGHMAN NO.<br>99-09-E450 |

|  |  |  |
|--|--|--|
| CAPITAL IMPROVEMENT PROJECT<br><b>STORM SEWER IMPROVEMENTS - Line 1</b><br>B.L. Sta. 151+00.00 to B.L. Sta. 156+50.00<br>HYDRAULIC AVENUE PAVING - 47TH STREET SOUTH TO MACARTHUR ROAD |  |  |
|--|--|--|

|   |  |  |
|---|--|--|
| <b>BAUGHMAN COMPANY, P.A.</b><br>ENGINEERING, SURVEYING, & PLANNING<br>316-262-7271 • 315 ELLIS • WICHITA, KANSAS 67211 |  |  |
|---|--|--|

|                          |
|--------------------------|
| SHEET<br>28<br>OF<br>102 |
|--------------------------|