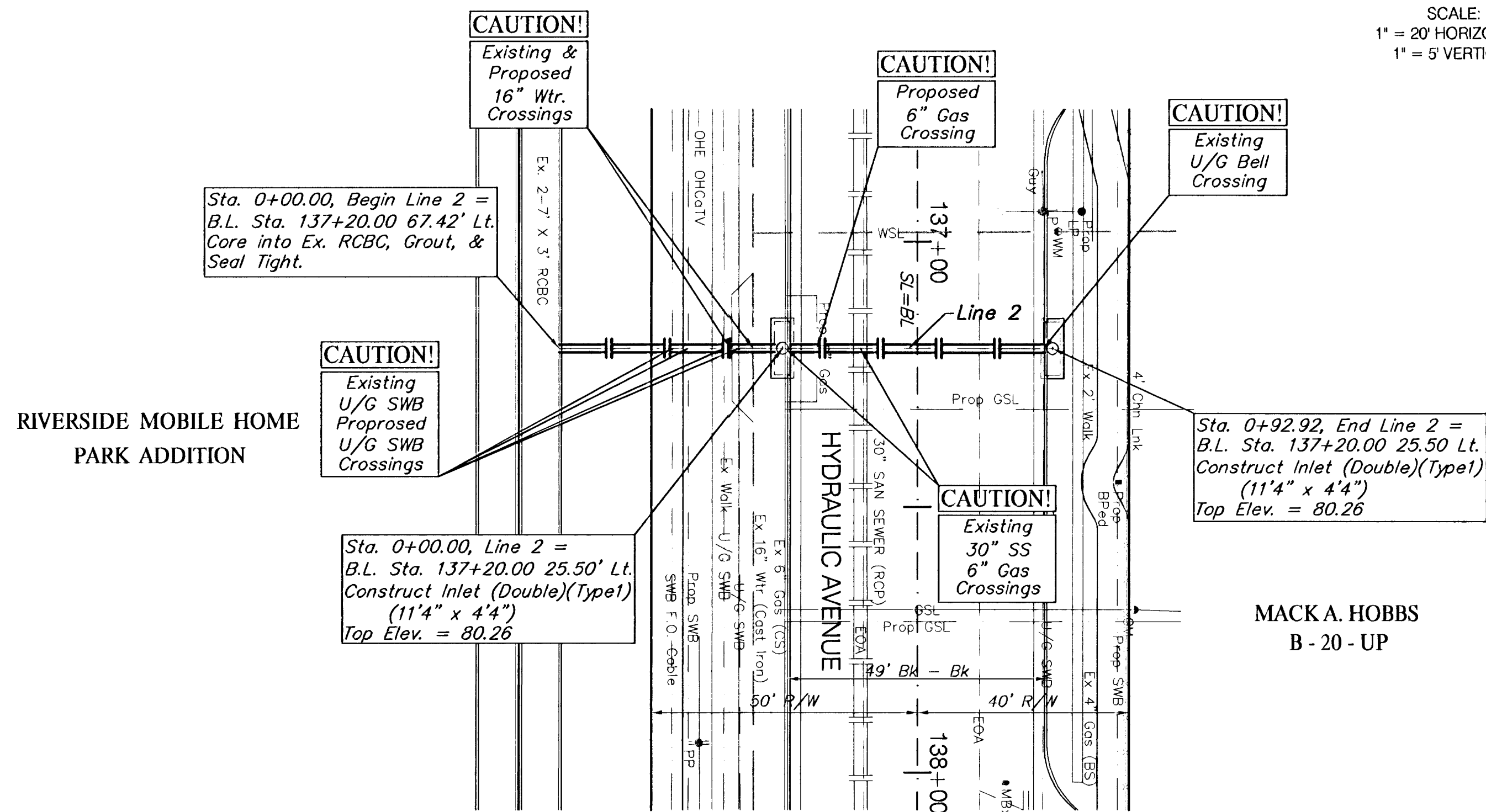


BENCHMARK:

BM #4 - RR Spike in West face of 2nd HLP, South of 43rd St. South, East side of Hydraulic. Sta. 136+157, 41' Rt. Elev. = 82.34 (City Datum)
 BM #5 - City of Wichita Bench Mark Disc, 35' South and 25' East of Centerlines Hydraulic and 43rd St. South. Sta. 141+72.24, 25' Rt. Elev. = 82.13 (City Datum)

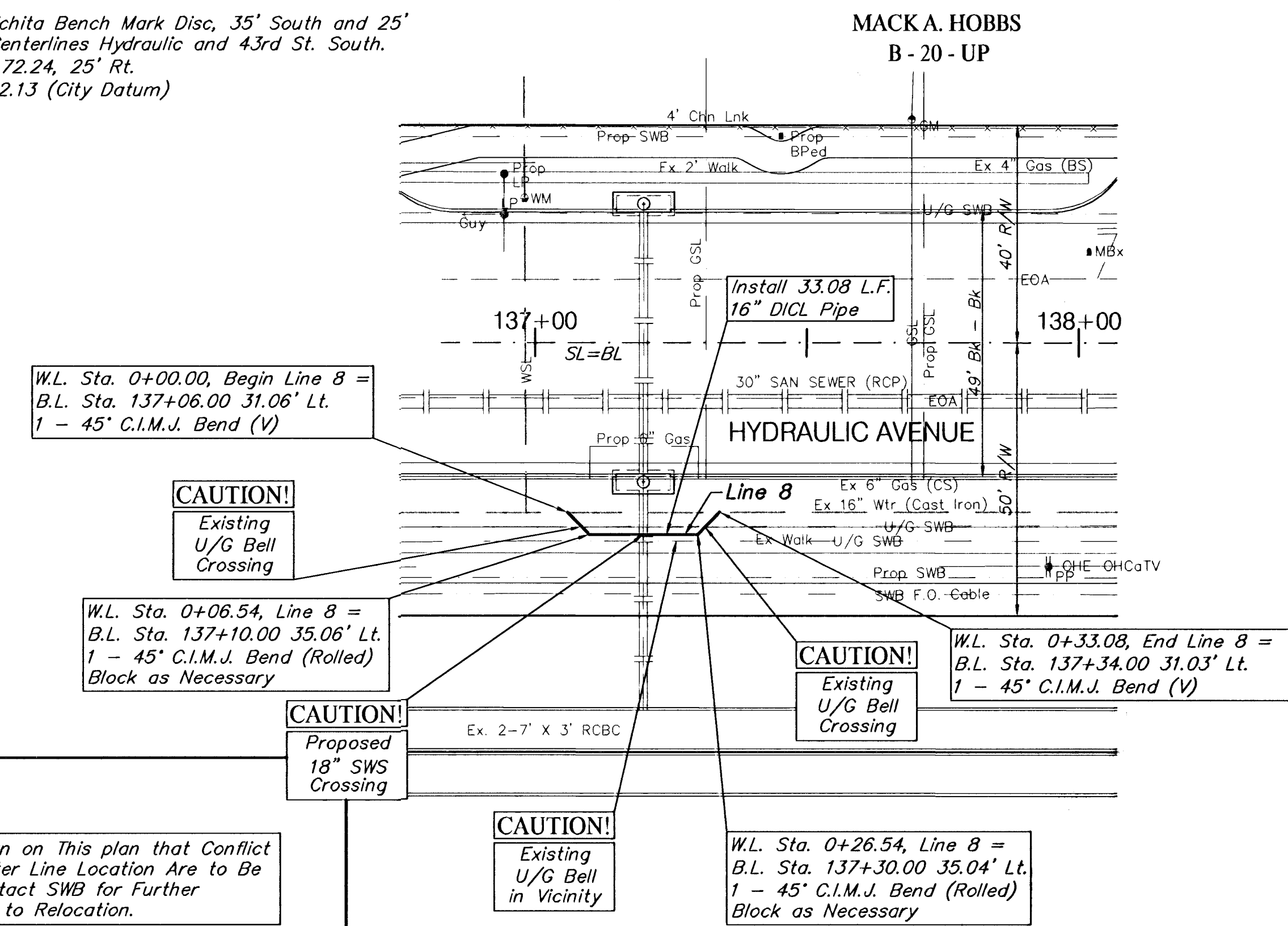
SCALE:
 1" = 20' HORIZONTAL
 1" = 5' VERTICAL



BENCHMARK:

BM #4 - RR Spike in West face of 2nd HLP, South of 43rd St. South, East side of Hydraulic. Sta. 136+157, 41' Rt. Elev. = 82.34 (City Datum)
 BM #5 - City of Wichita Bench Mark Disc, 35' South and 25' East of Centerlines Hydraulic and 43rd St. South. Sta. 141+72.24, 25' Rt. Elev. = 82.13 (City Datum)

SCALE:
 1" = 20' HORIZONTAL
 1" = 5' VERTICAL



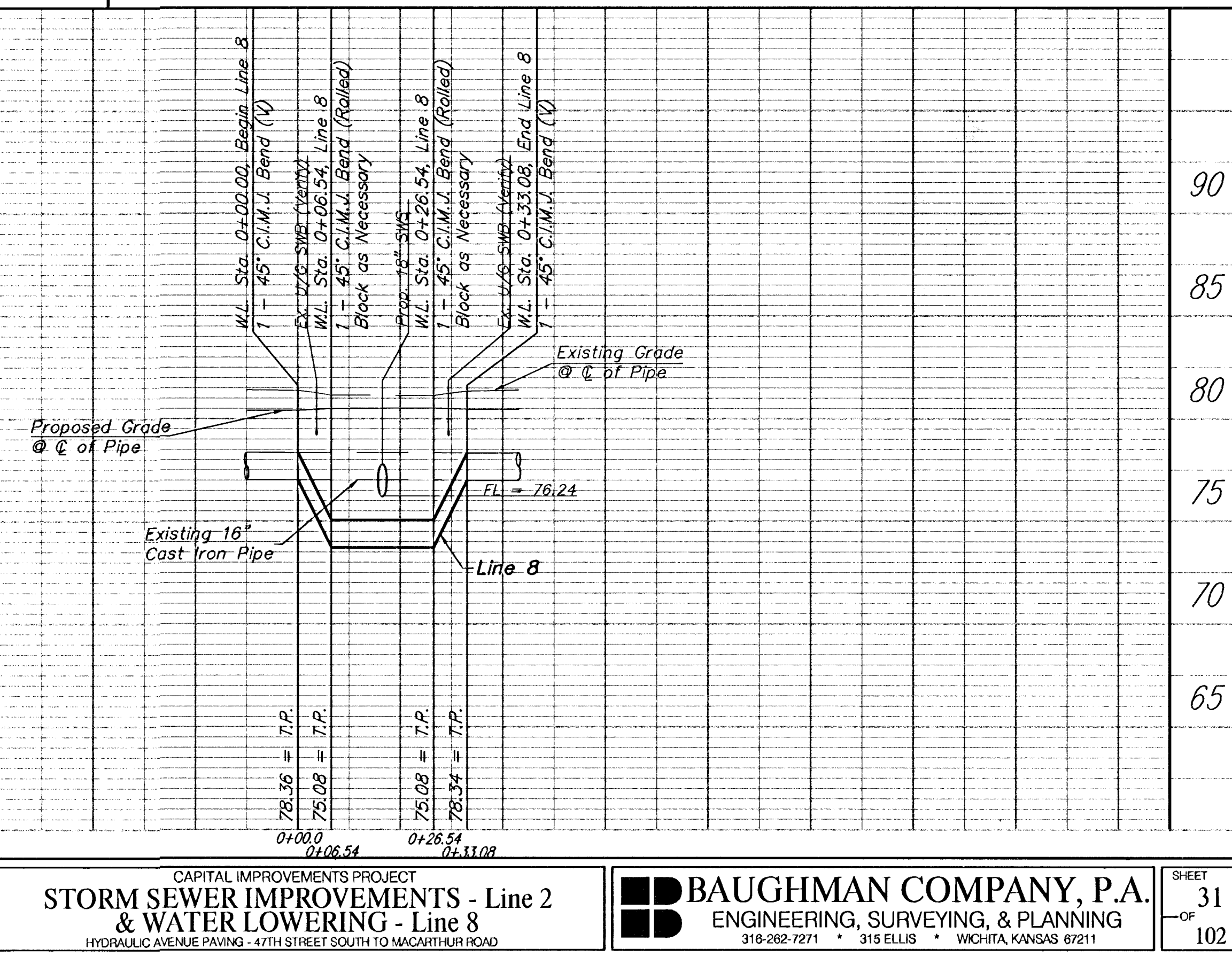
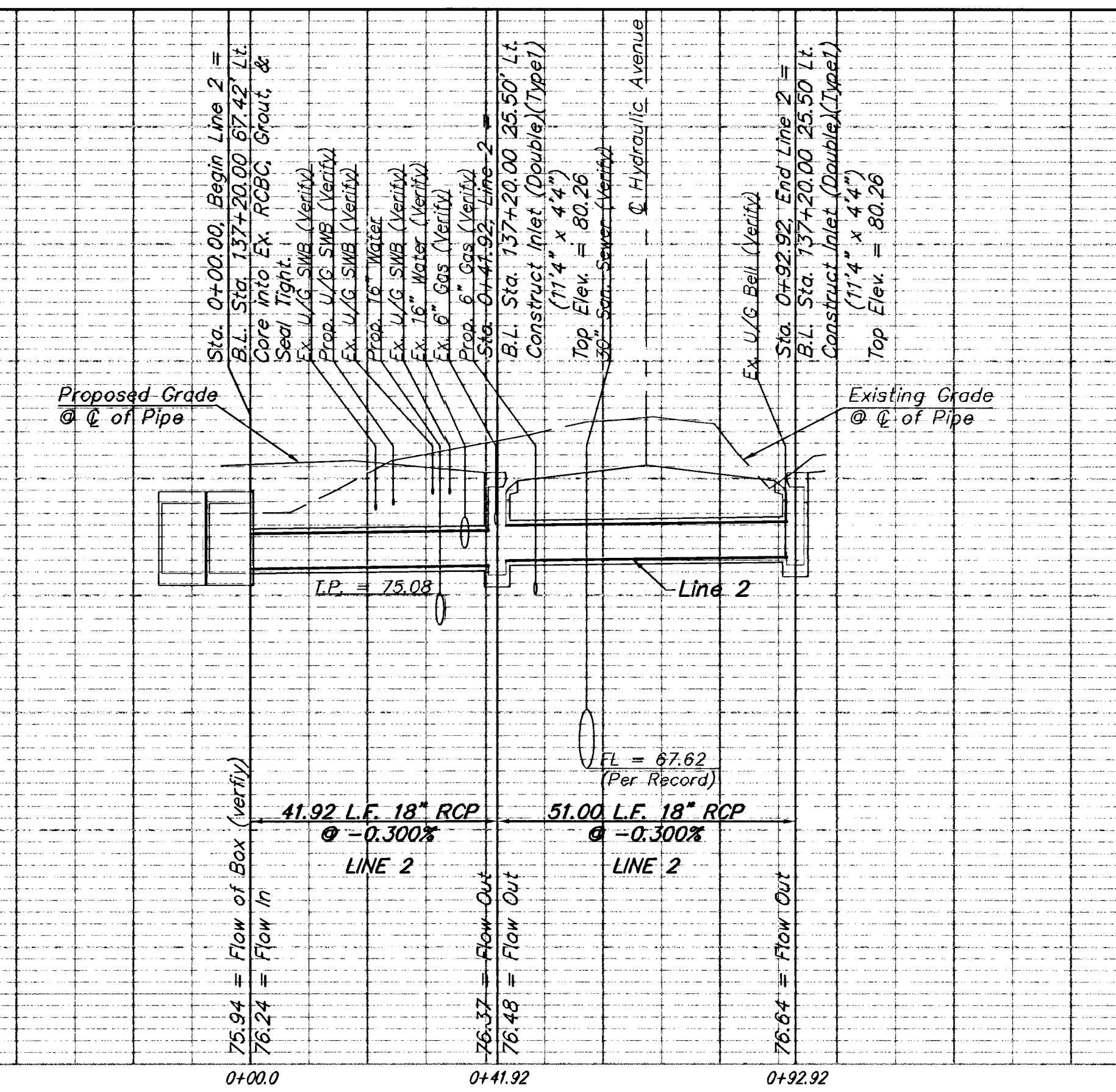
Notes:

SWB Cables Shown on This plan that Conflict with the New Water Line Location Are to Be Abandoned. Contact SWB for Further Information Prior to Relocation.

All New Pipe That is Unable to be Flushed Shall be Swabbed & Disinfected Prior to Installation. (SUBSIDIARY)

Contractor may Elect to Use Restrained Fittings and/or Rods & Lugs between Fittings to Ensure Thrust Restraint.

90				90	90			90
85				85	85			85
80				80	80			80
75				75	75			75
70				70	70			70
65				65	65			65



PROJECT NUMBER 472-76-245-83324	SHEET NAME SWS06b	ENGINEERING DIRECTORY F:\Eng\Hydraulic\sws
DESIGN JFB/TPV	DRAWN TPV	APPROVED JFB
DATE Sept. 2002	SCALE Noted	BAUGHMAN NO 99-09-E450

CAPITAL IMPROVEMENTS PROJECT
STORM SEWER IMPROVEMENTS - Line 2
 & WATER LOWERING - Line 8
 HYDRAULIC AVENUE PAVING - 47TH STREET SOUTH TO MACARTHUR ROAD

BAUGHMAN COMPANY, P.A.
 ENGINEERING, SURVEYING, & PLANNING
 318-262-7271 • 315 ELLIS • WICHITA, KANSAS 67211