

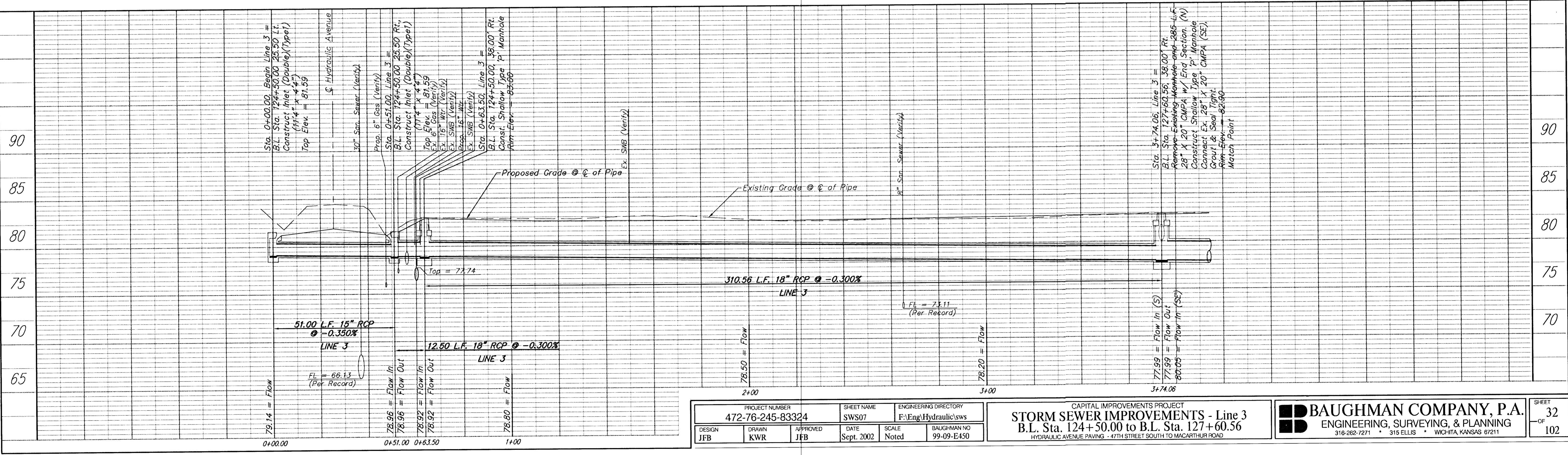
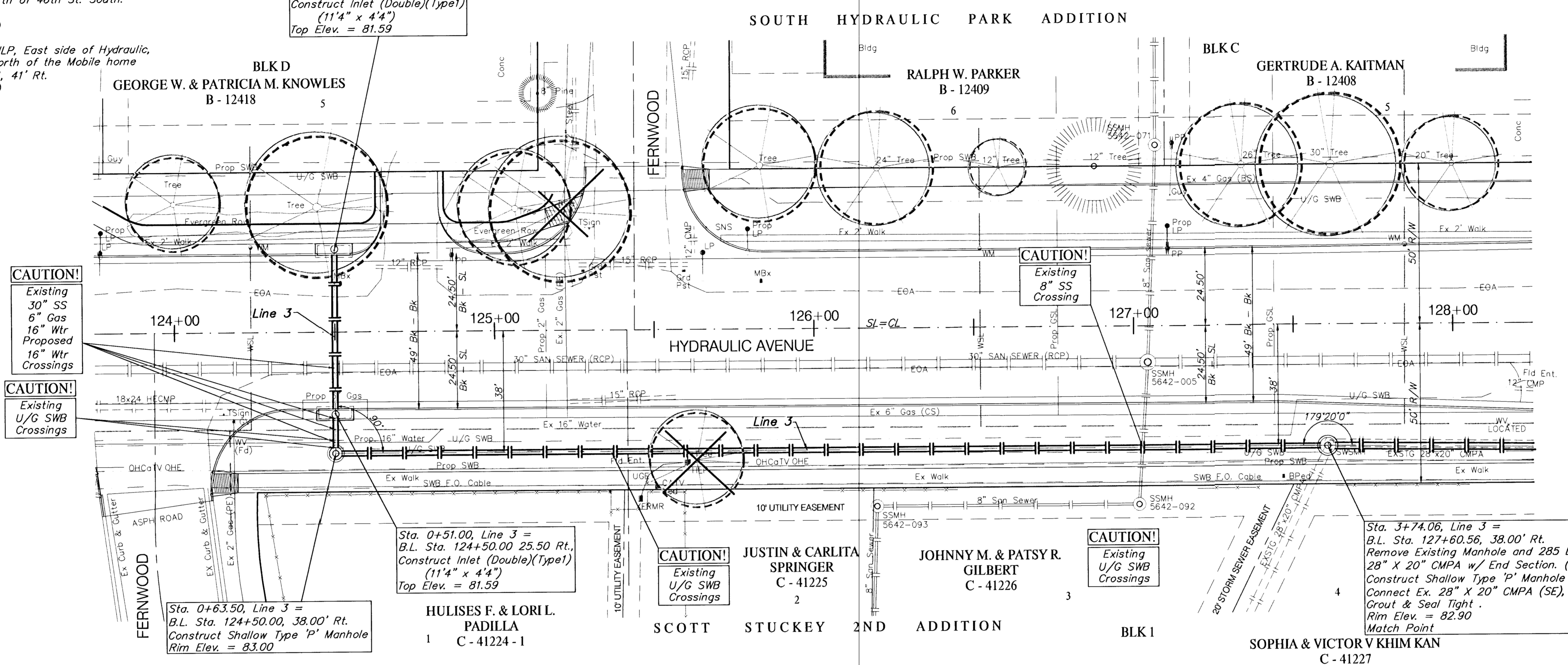
BENCHMARK:
 BM #2 - RR Spike in West face of HLP, East side of Hydraulic, South of Fernwood and North of 46th St. South. Sta. 122+83, 41' Rt. Elev. = 85.33 (City Datum)
 BM #3 - RR Spike in West face of HLP, East side of Hydraulic, North of 45th St South, North of the Mobile home Park Entrance. Sta. 131+21, 41' Rt. Elev. = 82.72 (City Datum)

Sta. 0+00.00, Begin Line 3 =
 B.L. Sta. 124+50.00 25.50 Lt.
 Construct Inlet (Double)(Type1)
 (11'4" x 4'4")
 Top Elev. = 81.59

Sta. 0+63.50, Line 3 =
 B.L. Sta. 124+50.00, 38.00' Rt.
 Construct Shallow Type 'P' Manhole
 Rim Elev. = 83.00

Sta. 0+51.00, Line 3 =
 B.L. Sta. 124+50.00 25.50 Rt.,
 Construct Inlet (Double)(Type1)
 (11'4" x 4'4")
 Top Elev. = 81.59

Sta. 3+74.06, Line 3 =
 B.L. Sta. 127+60.56, 38.00' Rt.
 Remove Existing Manhole and 285 L.F.
 28" X 20" CMPA w/ End Section. (N)
 Construct Shallow Type 'P' Manhole
 Connect Ex. 28" X 20" CMPA (SE),
 Grout & Seal Tight.
 Rim Elev. = 82.90
 Match Point



PROJECT NUMBER 472-76-245-83324	SHEET NAME SWS07	ENGINEERING DIRECTORY F:Eng/Hydraulic/sws
DESIGN JFB	DRAWN KWR	APPROVED JFB
DATE Sept. 2002	SCALE Noted	BAUGHMAN NO. 99-09-E450

CAPITAL IMPROVEMENTS PROJECT
STORM SEWER IMPROVEMENTS - Line 3
 B.L. Sta. 124+50.00 to B.L. Sta. 127+60.56
 HYDRAULIC AVENUE PAVING - 47TH STREET SOUTH TO MACARTHUR ROAD

BAUGHMAN COMPANY, P.A.
 ENGINEERING, SURVEYING, & PLANNING
 316-262-7271 • 315 ELLIS • WICHITA, KANSAS 67211