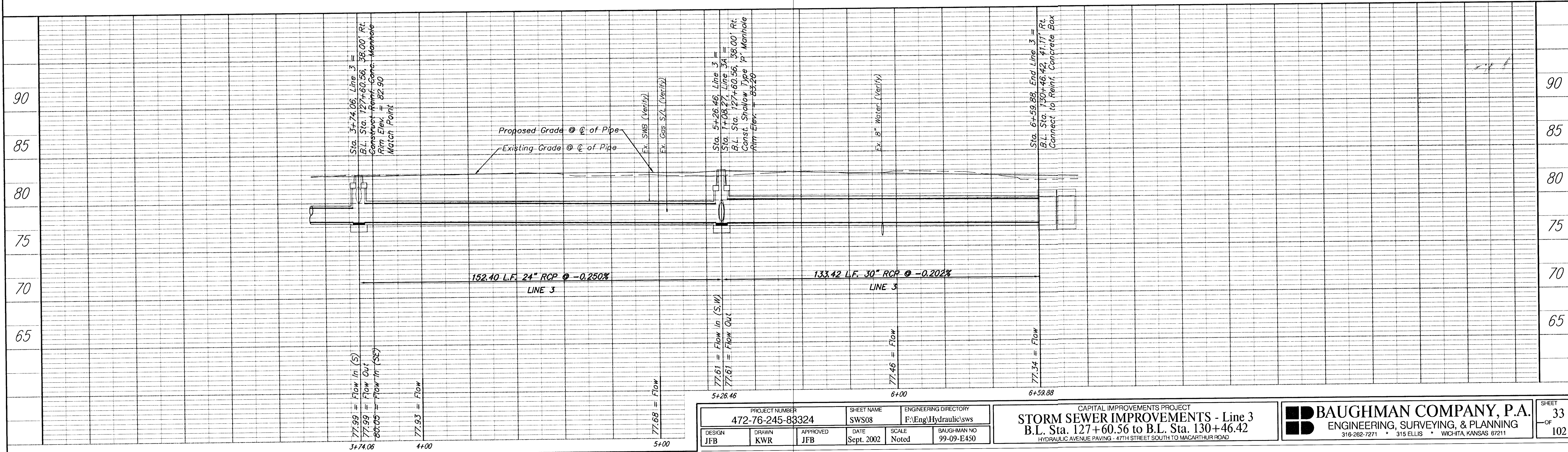
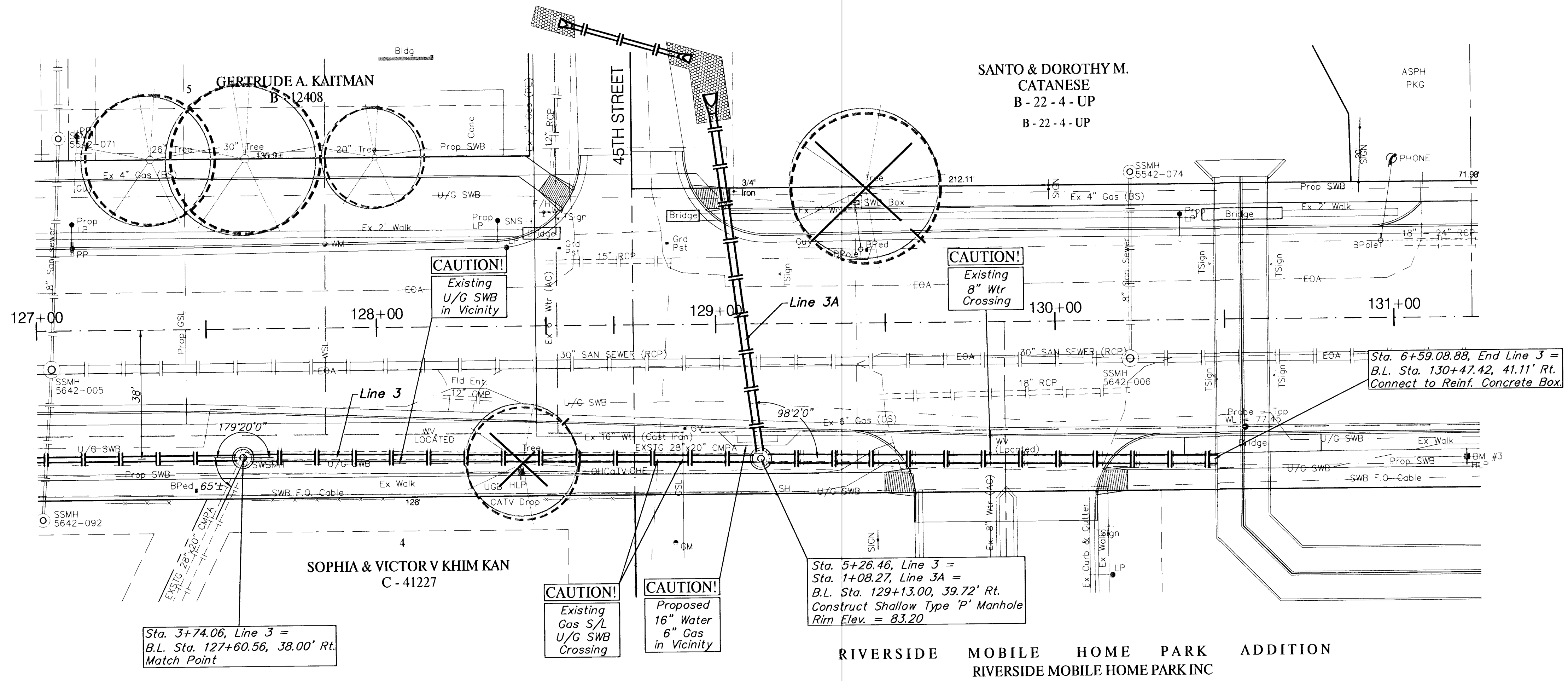


BENCHMARK:

BM #3 - RR Spike in West face of HLP, East side of Hydraulic,
North of 45th St South, North of the Mobile home
Park Entrance. Sta. 131+21, 41' Rt.
Elev. = 82.72 (City Datum)

SCALE:
1" = 20' HORIZONTAL
1" = 5' VERTICAL



PROJECT NUMBER 472-76-245-83324		SHEET NAME SWS08		ENGINEERING DIRECTORY F:Eng\Hydraulic\sws	
DESIGN JFB	DRAWN KWR	APPROVED JFB	DATE Sept. 2002	SCALE Noted	BAUGHMAN NO 99-09-E450

CAPITAL IMPROVEMENTS PROJECT
STORM SEWER IMPROVEMENTS - Line 3
B.L. Sta. 127+60.56 to B.L. Sta. 130+46.42
HYDRAULIC AVENUE PAVING - 47TH STREET SOUTH TO MACARTHUR ROAD

BAUGHMAN COMPANY, P.A.
ENGINEERING, SURVEYING, & PLANNING
316-262-7271 • 315 ELLIS • WICHITA, KANSAS 67211

SHEET
OF
33
102