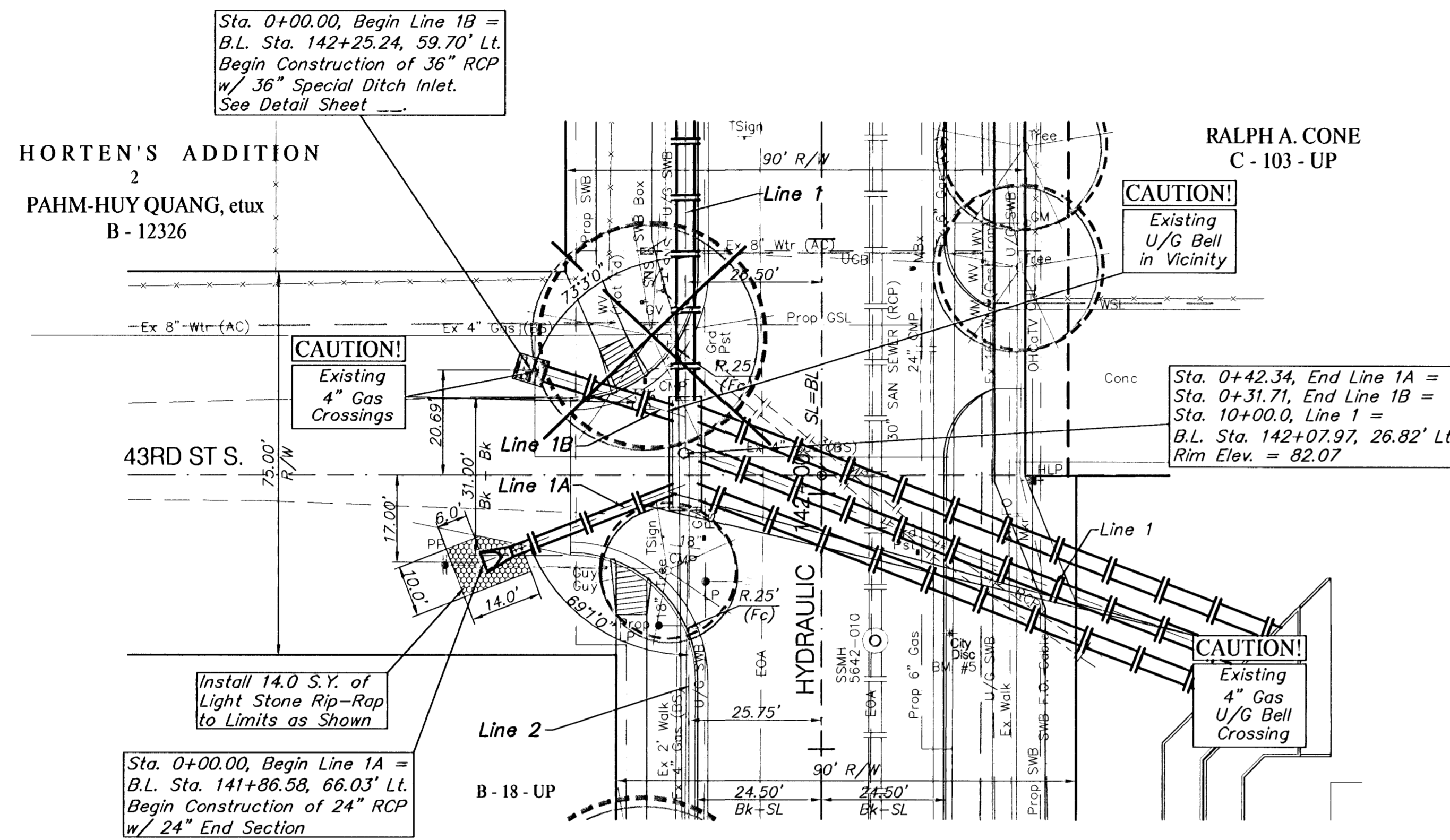


BENCHMARK:

BM #5 - City of Wichita Bench Mark Disc, 35' South and 25' East of Centerlines Hydraulic and 43rd St. South.
Sta. 141+72.24, 25' Rt.
Elev. = 82.13 (City Datum)

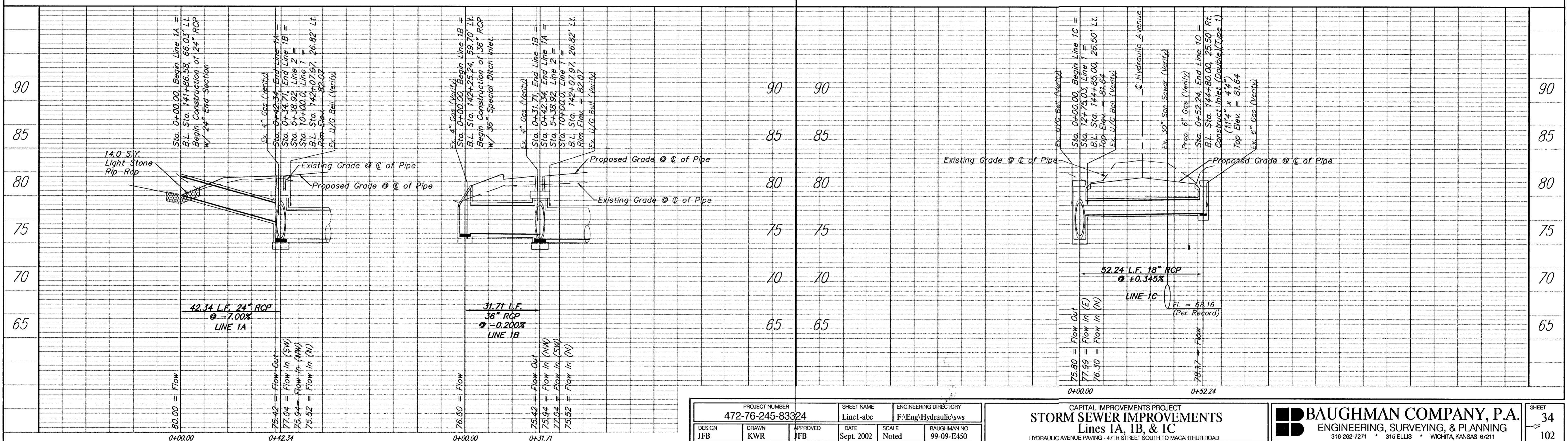
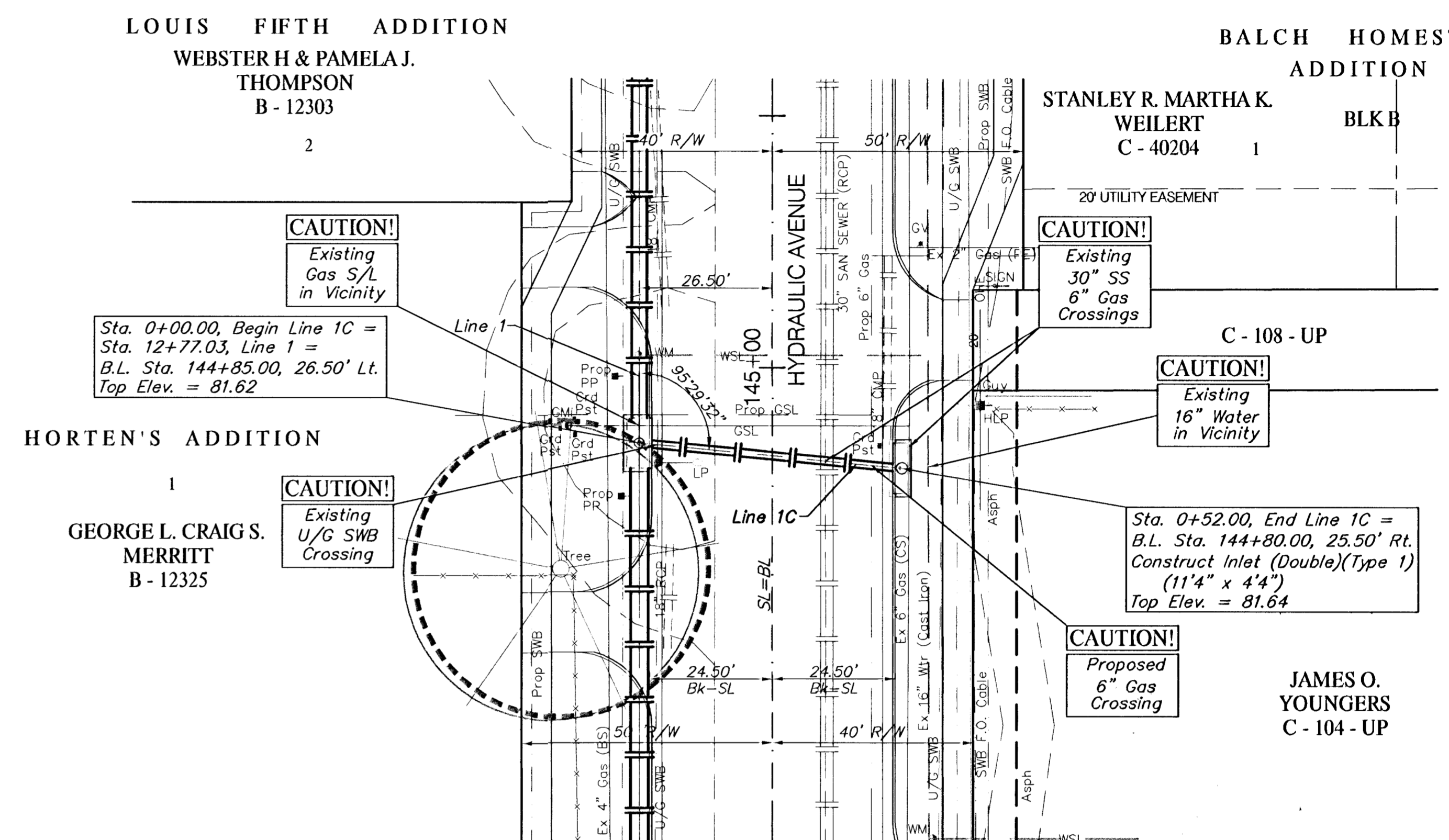
SCALE:
1" = 20' HORIZONTAL
1" = 5' VERTICAL



BENCHMARK:

BM #5 - City of Wichita Bench Mark Disc, 35' South and 25' East of Centerlines Hydraulic and 43rd St. South.
Sta. 141+72.24, 25' Rt.
Elev. = 82.13 (City Datum)

SCALE:
1" = 20' HORIZONTAL
1" = 5' VERTICAL



PROJECT NUMBER 472-76-245-83324		SHEET NAME Line1-abc		ENGINEERING DIRECTORY F:\Eng\Hydraulic\sws	
DESIGN JFB	DRAWN KWR	APPROVED JFB	DATE Sept. 2002	SCALE Noted	BAUGHMAN NO 99-09-E450

CAPITAL IMPROVEMENTS PROJECT
STORM SEWER IMPROVEMENTS
Lines 1A, 1B, & 1C
HYDRAULIC AVENUE PAVING - 47TH STREET SOUTH TO MACARTHUR ROAD

BAUGHMAN COMPANY, P.A.
ENGINEERING, SURVEYING, & PLANNING
316-262-7271 • 315 ELLIS • WICHITA, KANSAS 67211