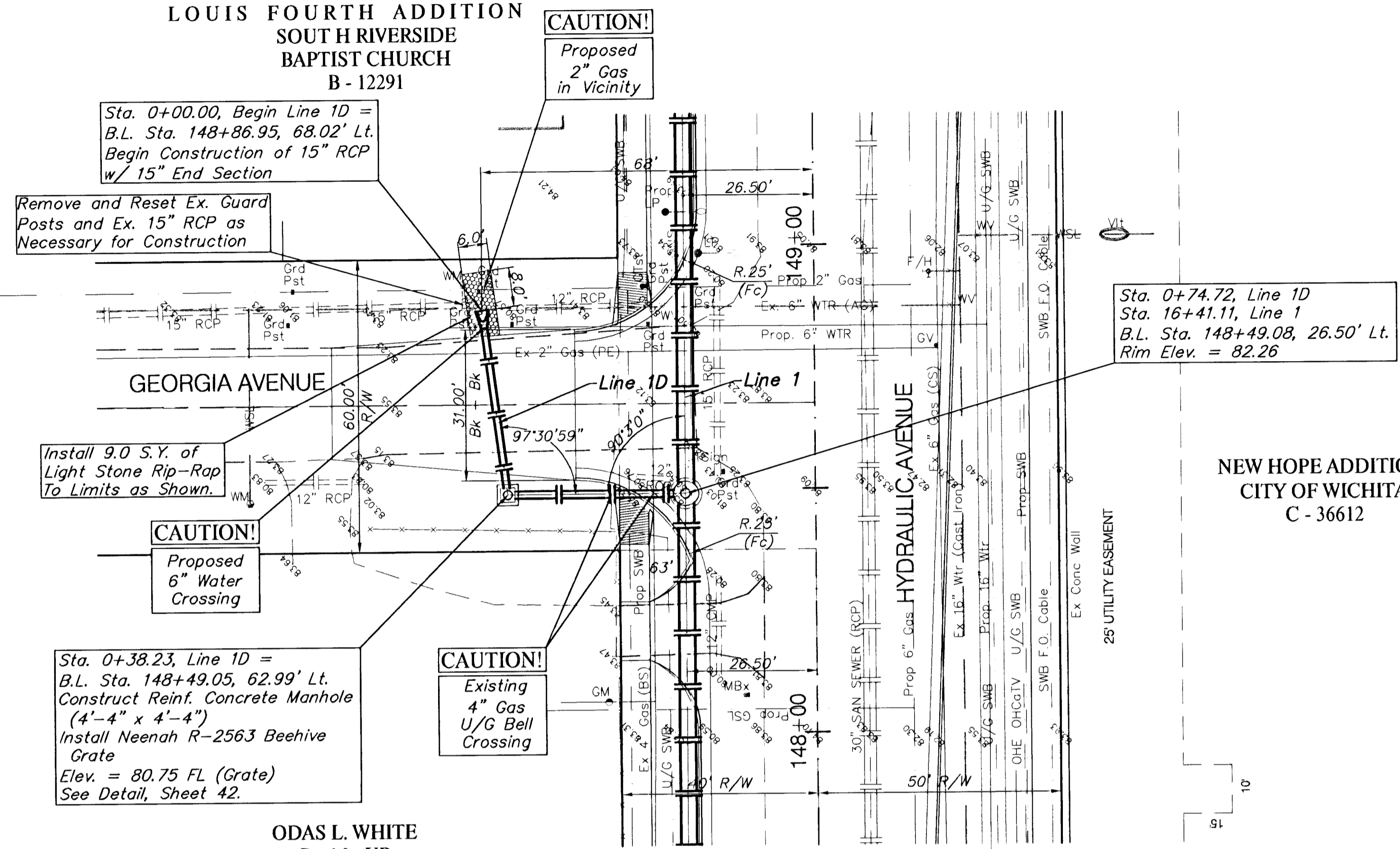


BENCHMARK:

BM #6 - RR Spike in West face of HLP, East side of Hydraulic,
South of Georgia St. Sta. 147+70, 43' Rt.
Elev. 84.51 (City Datum)

SCALE:
1" = 20' HORIZONTAL
1" = 5' VERTICAL

**LOUIS FOURTH ADDITION
SOUTH RIVERSIDE
BAPTIST CHURCH
B - 12291**



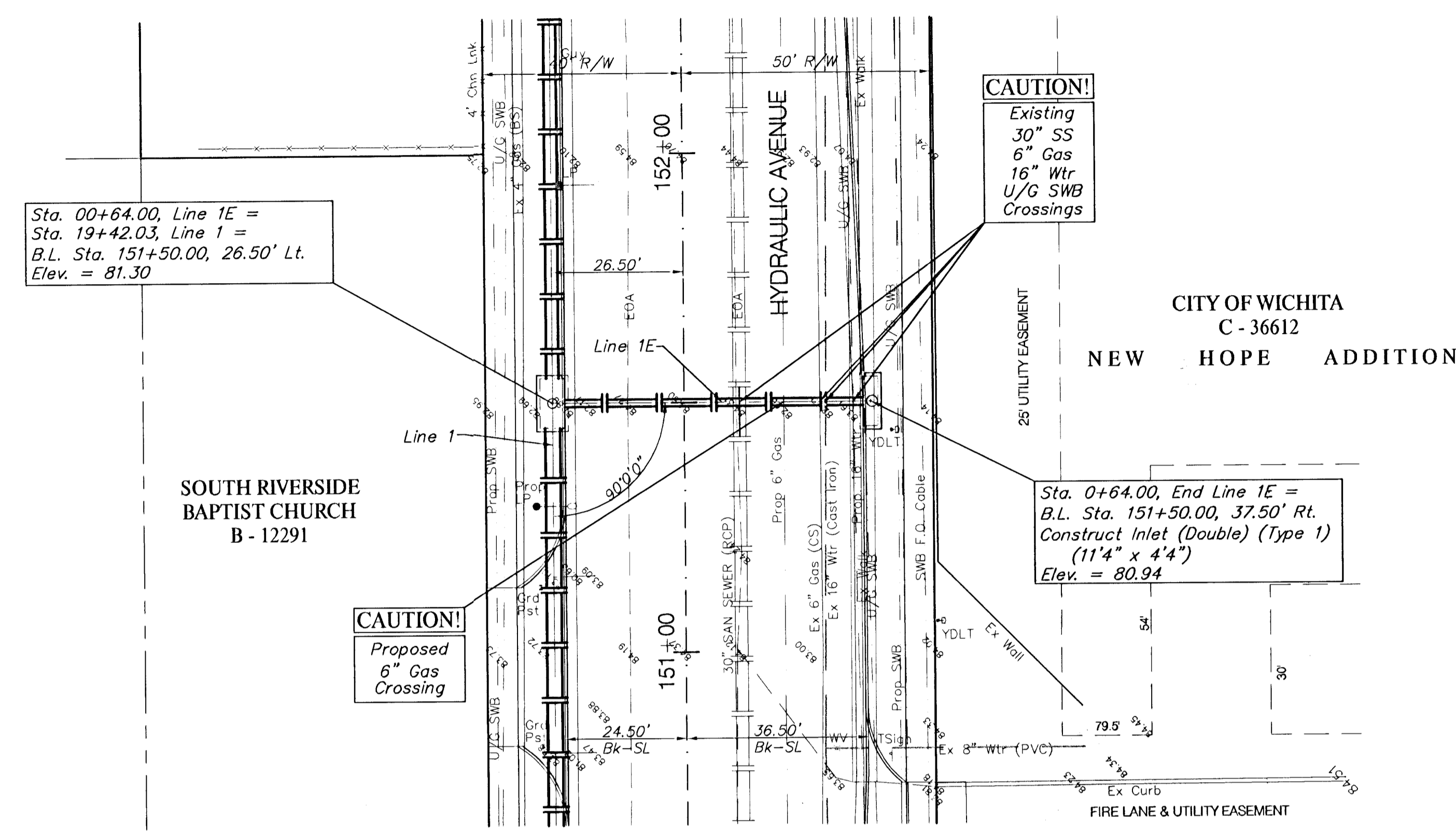
**NEW HOPE ADDITION
CITY OF WICHITA
C - 36612**

**ODAS L. WHITE
B - 16 - UP**

BENCHMARK:

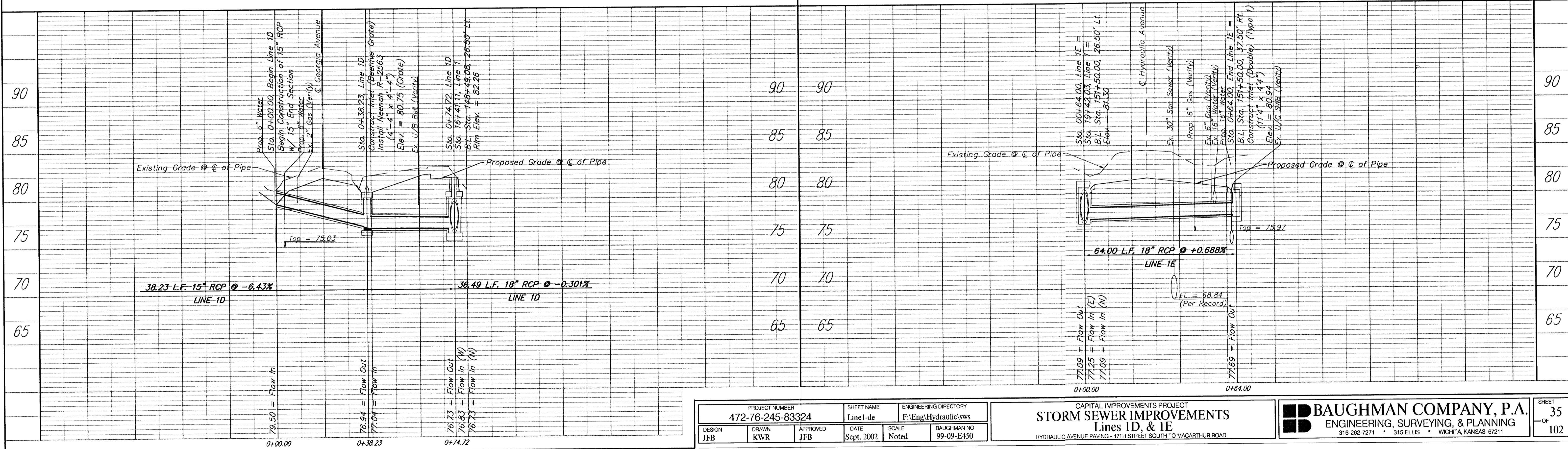
BM #7 - RR Spike in West face of HLP, East side of Hydraulic,
South of Alta Street. Sta. 155+07, 41' Rt.
Elev. = 86.12 (City Datum)

SCALE:
1" = 20' HORIZONTAL
1" = 5' VERTICAL



**CITY OF WICHITA
C - 36612
NEW HOPE ADDITION**

**SOUTH RIVERSIDE
BAPTIST CHURCH
B - 12291**



PROJECT NUMBER 472-76-245-83324	SHEET NAME Line1-de	ENGINEERING DIRECTORY F:\Eng\Hydraulic\sws
DESIGN JFB	DATE Sept. 2002	SCALE Noted
DRAWN KWR	APPROVED JFB	BAUGHMAN NO 99-09-E450

CAPITAL IMPROVEMENTS PROJECT
**STORM SEWER IMPROVEMENTS
Lines 1D & 1E**
HYDRAULIC AVENUE PAVING - 47TH STREET SOUTH TO MACARTHUR ROAD

BAUGHMAN COMPANY, P.A.
ENGINEERING, SURVEYING, & PLANNING
316-282-7271 • 315 ELLIS • WICHITA, KANSAS 67211

SHEET 35
OF 102