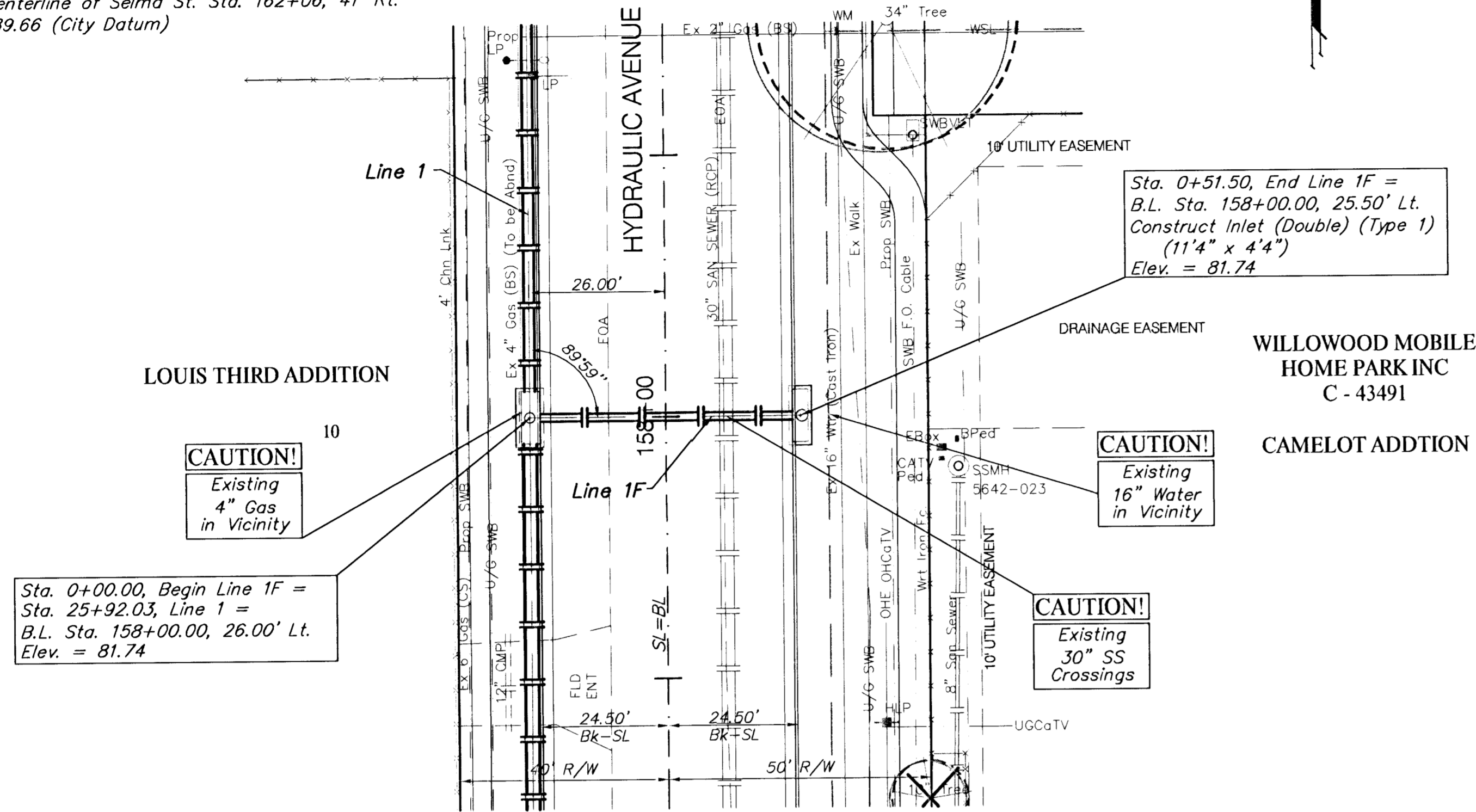


**BENCHMARK:**

BM #7 - RR Spike in West face of HLP, East side of Hydraulic, South of Alta Street. Sta. 155+07, 41' Rt. Elev. = 86.12 (City Datum)

BM #8 - RR Spike in West face of HLP, East side of Hydraulic, at the Centerline of Selma St. Sta. 162+06, 41' Rt. Elev. = 89.66 (City Datum)

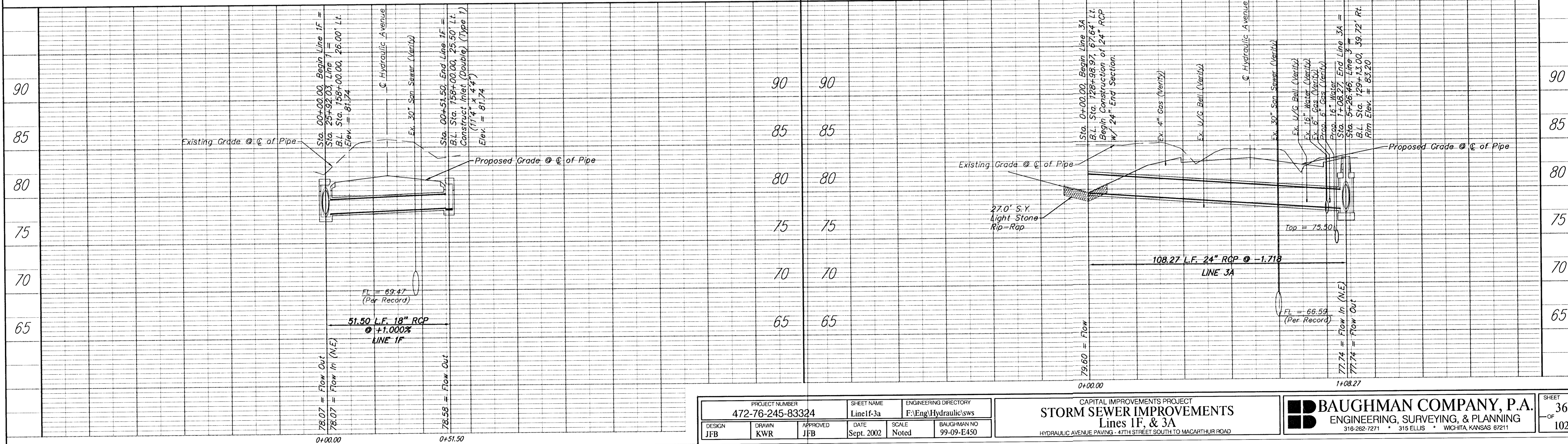
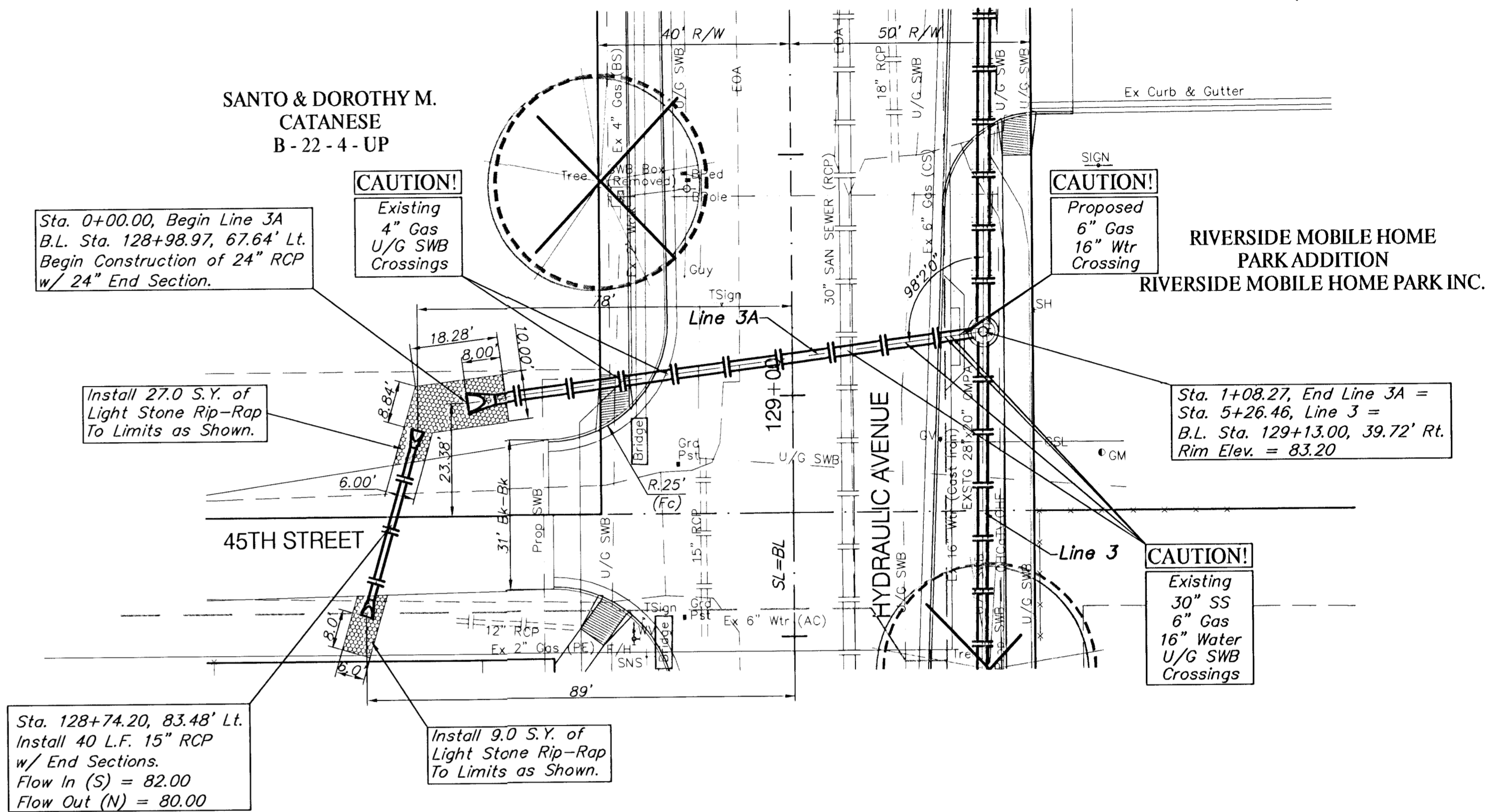
SCALE:  
1" = 20' HORIZONTAL  
1" = 5' VERTICAL



**BENCHMARK:**

BM #3 - RR Spike in West face of HLP, East side of Hydraulic, North of 45th St South, North of the Mobile home Park Entrance. Sta. 131+21, 41' Rt. Elev. = 82.72 (City Datum)

SCALE:  
1" = 20' HORIZONTAL  
1" = 5' VERTICAL



PROJECT NUMBER 472-76-245-83324		SHEET NAME Line 1F-3a		ENGINEERING DIRECTORY F:Eng/Hydraulic/sws	
DESIGN JFB	DRAWN KWR	APPROVED JFB	DATE Sept. 2002	SCALE Noted	BAUGHMAN NO 99-09-E450

CAPITAL IMPROVEMENTS PROJECT  
**STORM SEWER IMPROVEMENTS**  
Lines 1F, & 3A  
HYDRAULIC AVENUE PAVING - 47TH STREET SOUTH TO MACARTHUR ROAD

**BAUGHMAN COMPANY, P.A.**  
ENGINEERING, SURVEYING, & PLANNING  
316-262-7271 • 315 ELLIS • WICHITA KANSAS 67211

SHEET  
OF  
36  
102