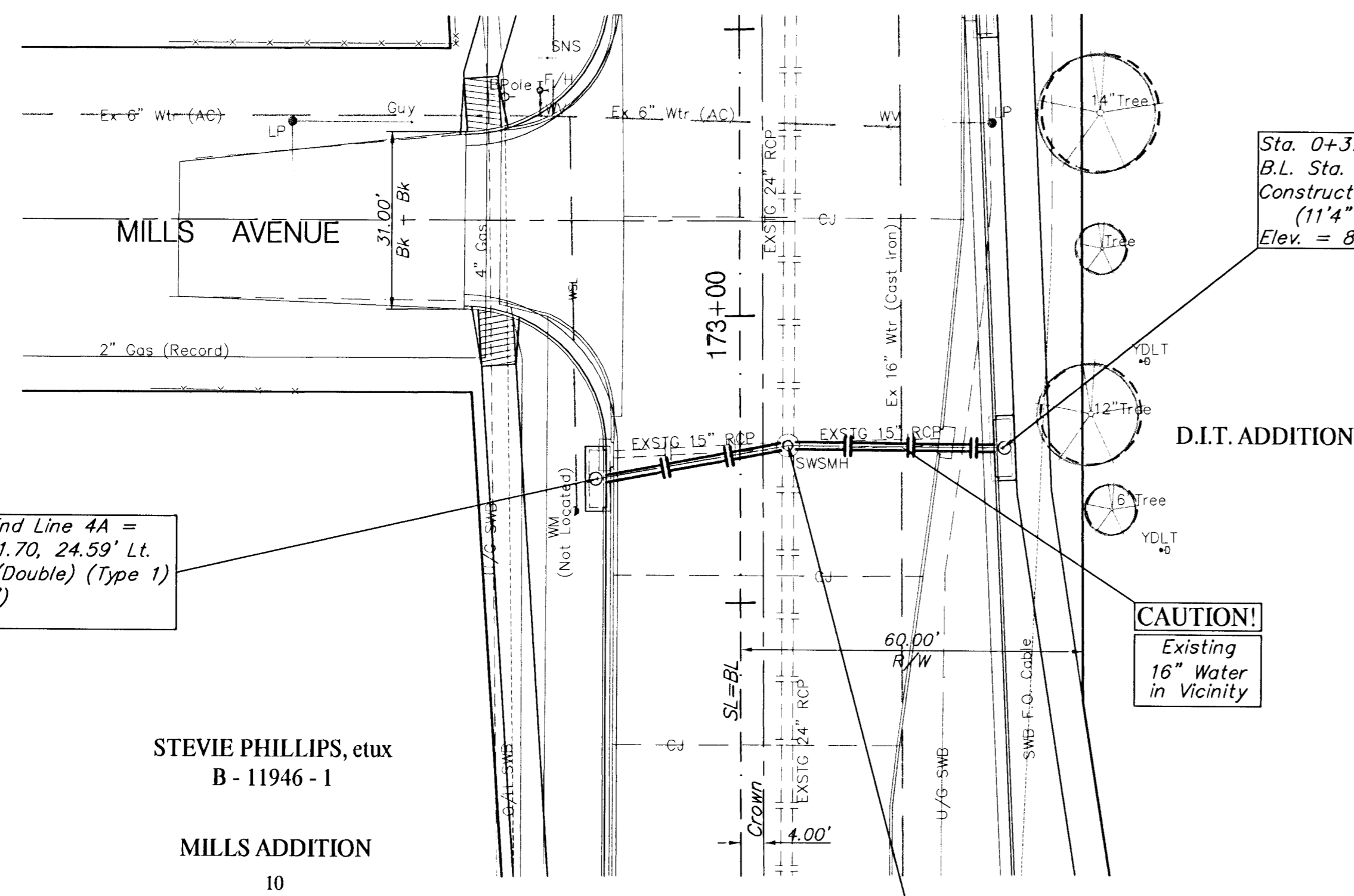


BENCHMARK:

BM #9 - City of Wichita Bench Mark Disc, 48.6' South and 32.4' West of Centerlines Hydraulic and Mac Arthur Sta. 168+35.3, 32.4' Rt. Elev. = 86.98 (City Datum)

SCALE:
1" = 20' HORIZONTAL
1" = 5' VERTICAL



Sta. 0+33.44, End Line 4A =
B.L. Sta. 172+71.70, 24.59' Lt.
Construct Inlet (Double) (Type 1)
(11'4" x 4'4")
Elev. = 85.06

Sta. 0+37.55, End Line 4B =
B.L. Sta. 172+76.91, 45.90' Rt.
Construct Inlet (Double) (Type 1)
(11'4" x 4'4")
Elev. = 84.73

STEVIE PHILLIPS, etux
B - 11946 - 1

MILLS ADDITION
10

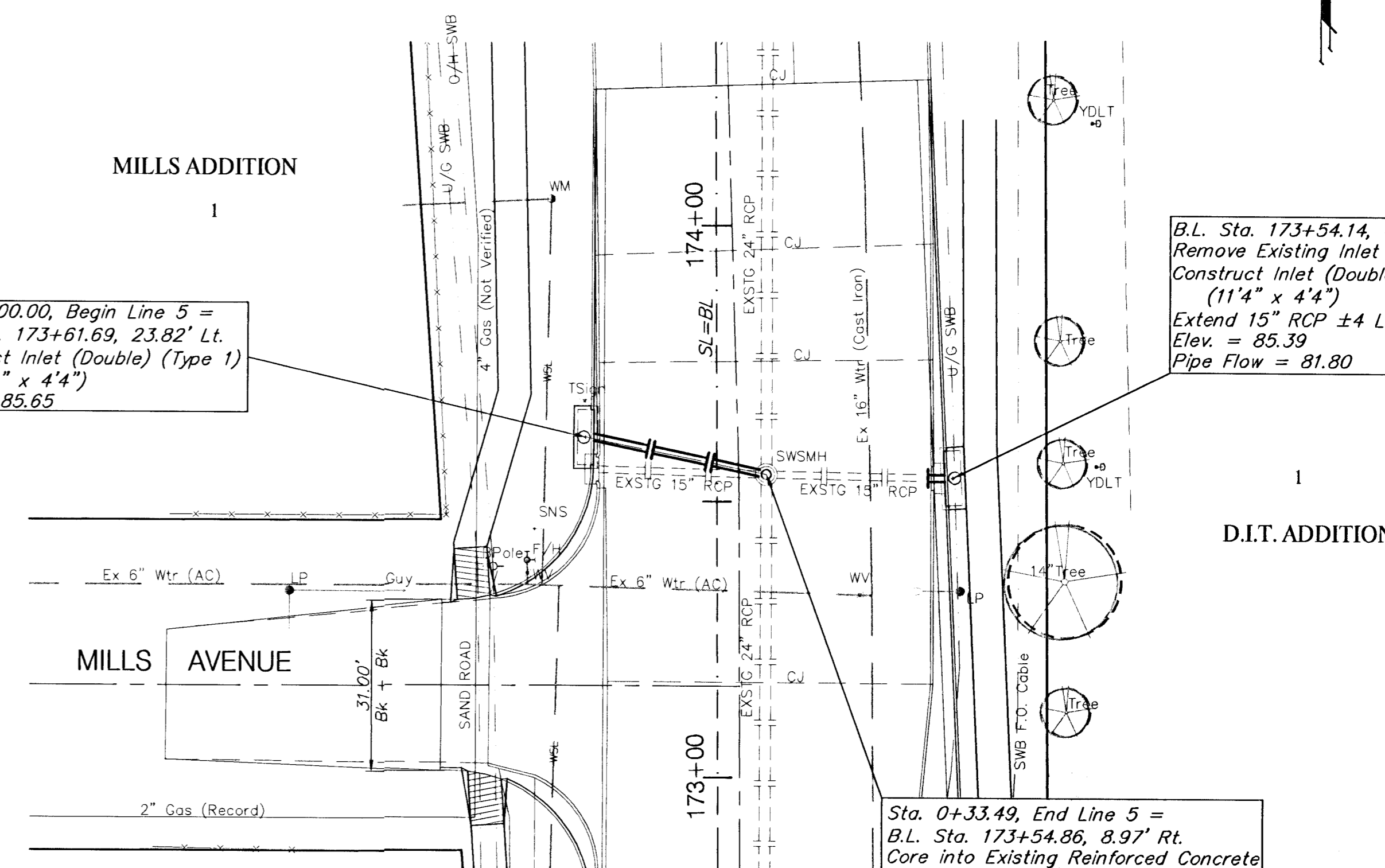
Sta. 0+00.00, Begin Line 4A =
Sta. 0+00.00, Begin Line 4B =
B.L. Sta. 172+77.38, 8.36' Lt.
Core into Existing Reinforced Concrete
Manhole, Grout, & Seal Tight.
Install 2-15" Storm Sewer Pipe (E,W)
Remove Inlets, 2-15" RCP and plug holes.

CAUTION!
Existing
16" Water
in Vicinity

BENCHMARK:

BM #9 - City of Wichita Bench Mark Disc, 48.6' South and 32.4' West of Centerlines Hydraulic and Mac Arthur Sta. 168+35.3, 32.4' Rt. Elev. = 86.98 (City Datum)

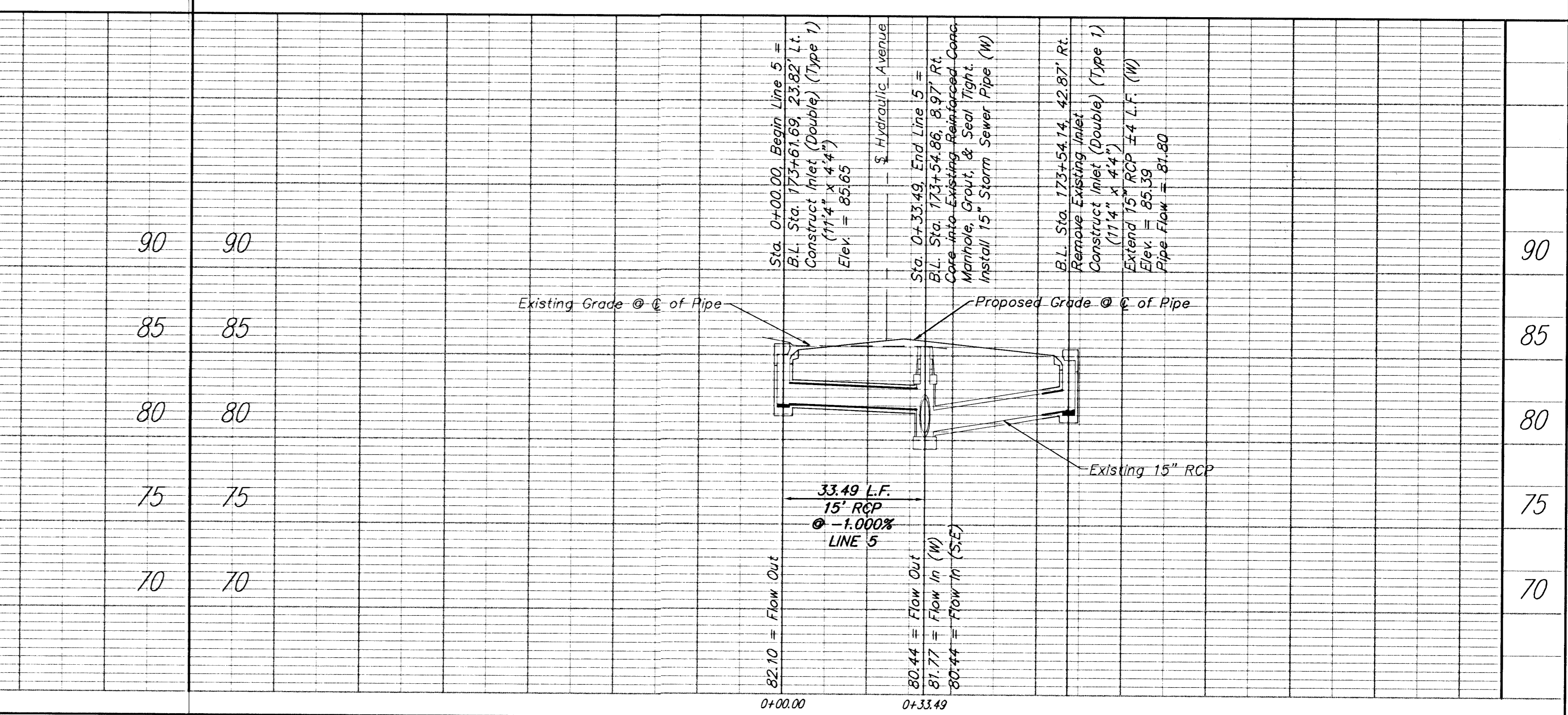
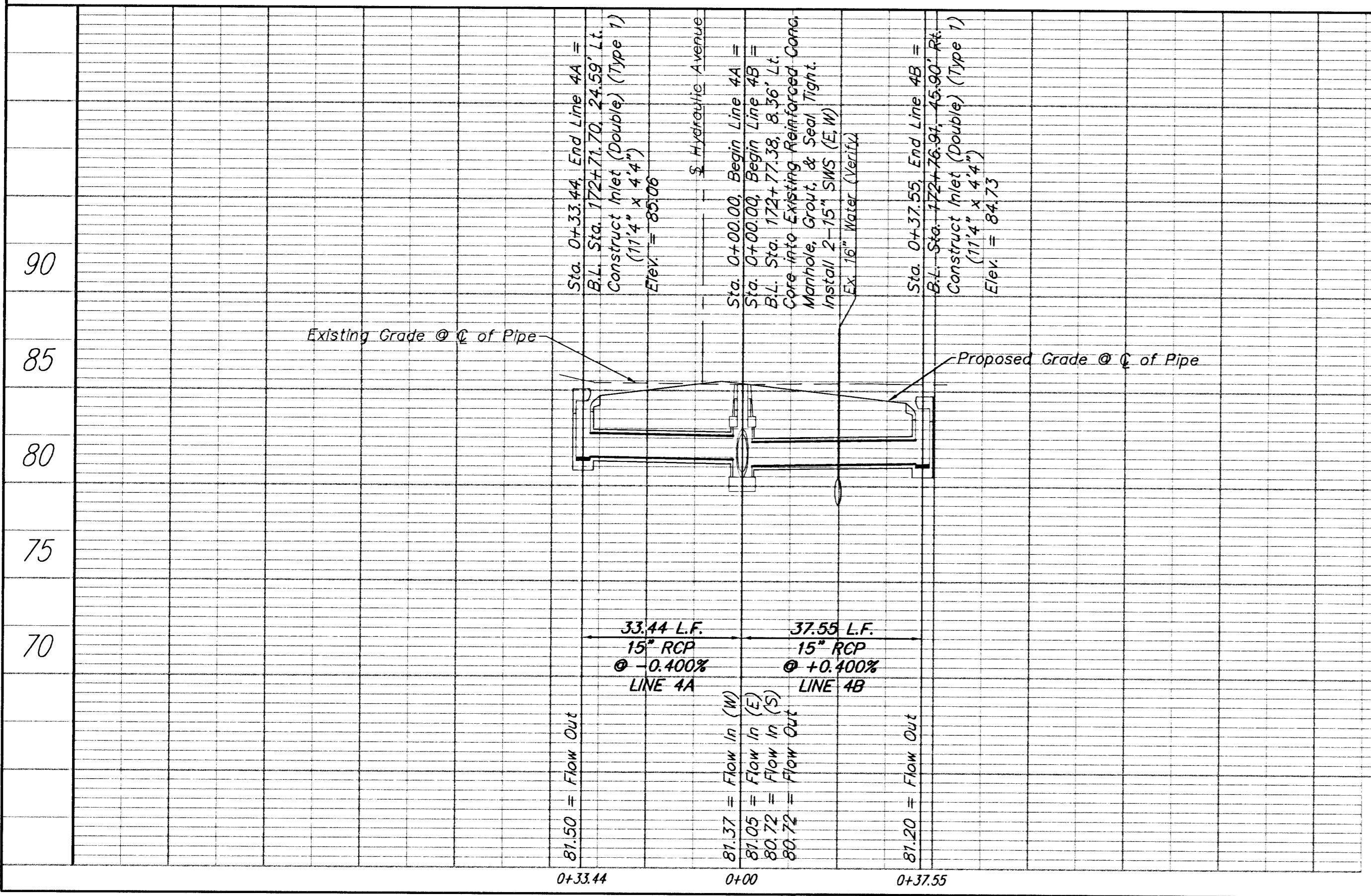
SCALE:
1" = 20' HORIZONTAL
1" = 5' VERTICAL



Sta. 0+00.00, Begin Line 5 =
B.L. Sta. 173+61.69, 23.82' Lt.
Construct Inlet (Double) (Type 1)
(11'4" x 4'4")
Elev. = 85.65

B.L. Sta. 173+54.14, 42.87' Rt.
Remove Existing Inlet
Construct Inlet (Double) (Type 1)
(11'4" x 4'4")
Extend 15" RCP ±4 L.F. (W)
Elev. = 85.39
Pipe Flow = 81.80

Sta. 0+33.49, End Line 5 =
B.L. Sta. 173+54.86, 8.97' Rt.
Core into Existing Reinforced Concrete
Manhole, Grout, & Seal Tight.
Install 15" Storm Sewer Pipe (W)
Remove Inlet, 15" RCP, and plug hole.



PROJECT NUMBER 472-76-245-83324		SHEET NAME Line 4b-5		ENGINEERING DIRECTORY F:\Eng\Hydraulic\Sws	
DESIGN JFB	DRAWN KWR	APPROVED JFB	DATE Sept. 2002	SCALE Noted	BAUGHMAN NO 99-09-E450

CAPITAL IMPROVEMENTS PROJECT
**STORM SEWER IMPROVEMENTS
LINES 4A, 4B & 5**
HYDRAULIC AVENUE PAVING - 4TH STREET SOUTH TO MACARTHUR ROAD

BAUGHMAN COMPANY, P.A.
ENGINEERING, SURVEYING, & PLANNING
316-262-7271 • 315 ELLIS • WICHITA, KANSAS 67211

SHEET 37 OF 102