

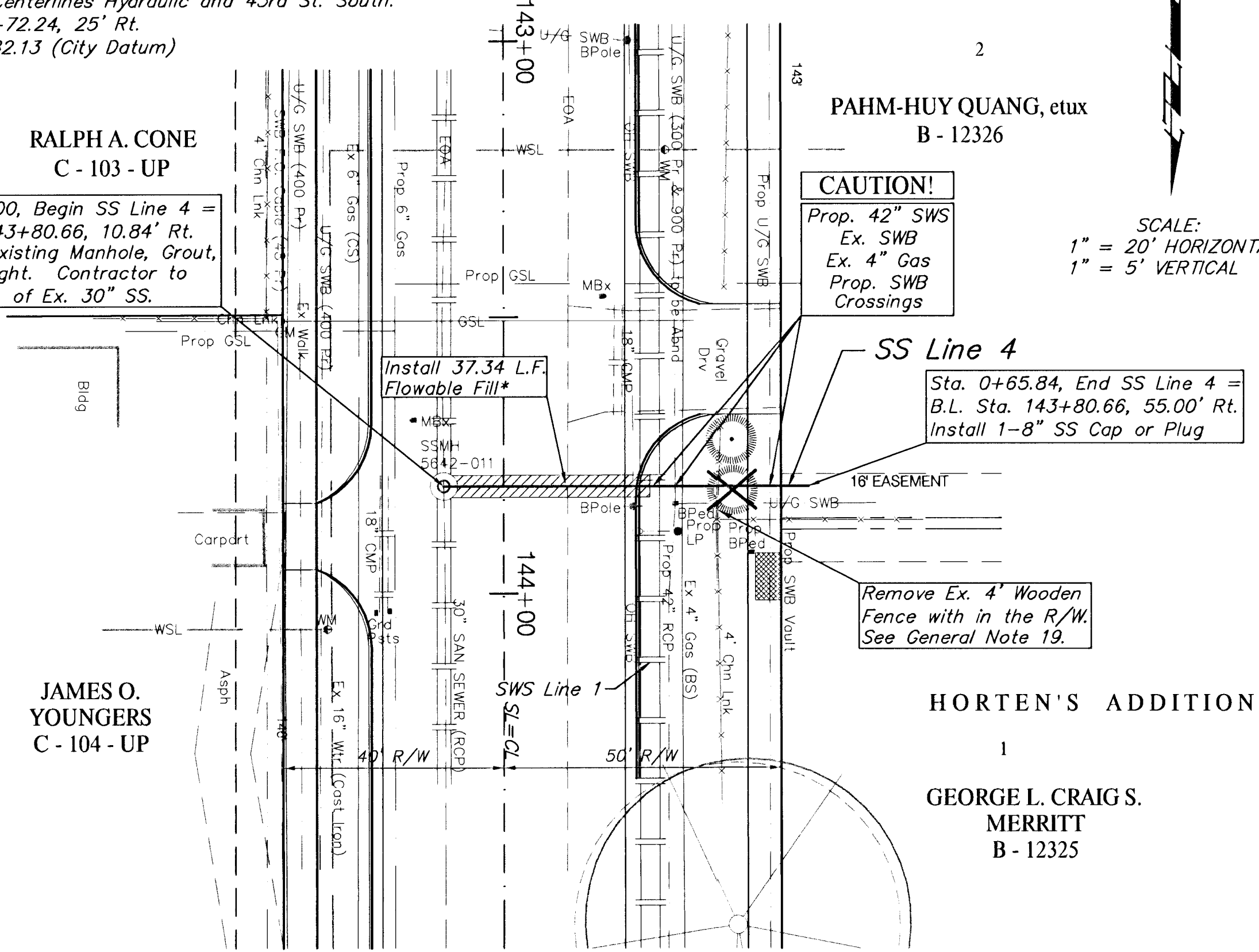
BENCHMARK:

BM #5 - City of Wichita Bench Mark Disc, 35' South and 25' East of Centerlines Hydraulic and 43rd St. South. Sta. 141+72.24, 25' Rt. Elev. = 82.13 (City Datum)

RALPH A. CONE
C - 103 - UP

Sta. 0+00.00, Begin SS Line 4 = B.L. Sta. 143+80.66, 10.84' Rt. Core into Existing Manhole, Grout, and Seal Tight. Contractor to Verify Depth of Ex. 30" SS.

JAMES O. YOUNGERS
C - 104 - UP



CAUTION!
Prop. 42" SWS
Ex. SWB
Ex. 4" Gas
Prop. SWB Crossings

SS Line 4
Sta. 0+65.84, End SS Line 4 = B.L. Sta. 143+80.66, 55.00' Rt. Install 1-8" SS Cap or Plug

Remove Ex. 4' Wooden Fence with in the R/W. See General Note 19.

HORTEN'S ADDITION

GEORGE L. CRAIG S. MERRITT
B - 12325

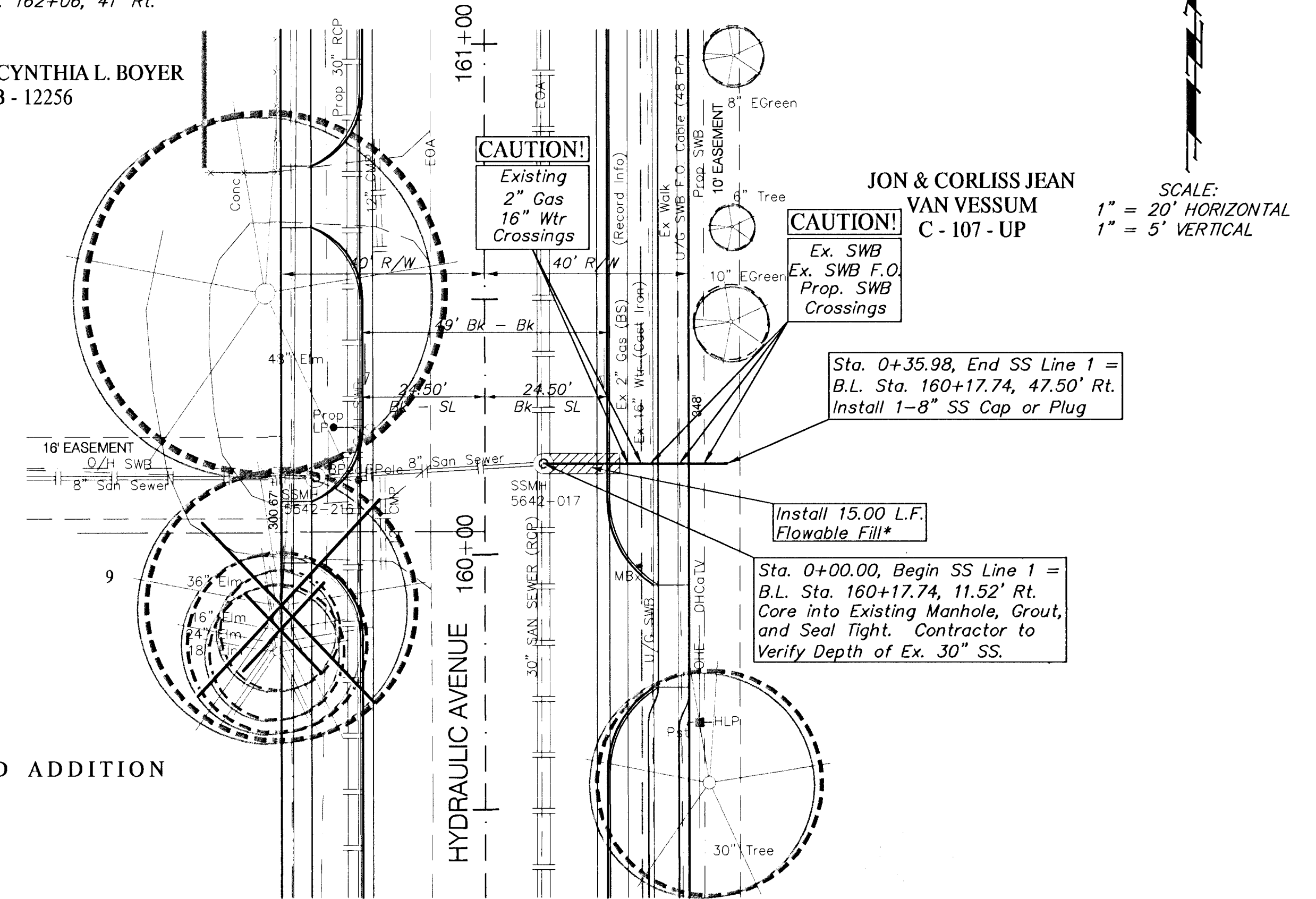
SCALE:
1" = 20' HORIZONTAL
1" = 5' VERTICAL

BENCHMARK:

BM #8 - RR Spike in West face of HLP, East side of Hydraulic, at the Centerline of Selma St. Sta. 162+06, 41' Rt. Elev. = 89.66 (City Datum)

LARRY E. & CYNTHIA L. BOYER
B - 12256

LOUIS THIRD ADDITION



CAUTION!
Ex. SWB
Ex. SWB F.O.
Prop. SWB Crossings

Sta. 0+35.98, End SS Line 1 = B.L. Sta. 160+17.74, 47.50' Rt. Install 1-8" SS Cap or Plug

Install 15.00 L.F. Flowable Fill*

Sta. 0+00.00, Begin SS Line 1 = B.L. Sta. 160+17.74, 11.52' Rt. Core into Existing Manhole, Grout, and Seal Tight. Contractor to Verify Depth of Ex. 30" SS.

SCALE:
1" = 20' HORIZONTAL
1" = 5' VERTICAL

SS GENERAL NOTES

Ex. SWB Poles and O/H Lines to be Removed by "Others" Prior to Construction.

Original Design Drawings for the Ex. Manholes Reflect Concrete Manholes with Plastic Lining, & Brick Stacks. Plastic Linings shall be Repaired/Resealed Following Tie-in Operations.

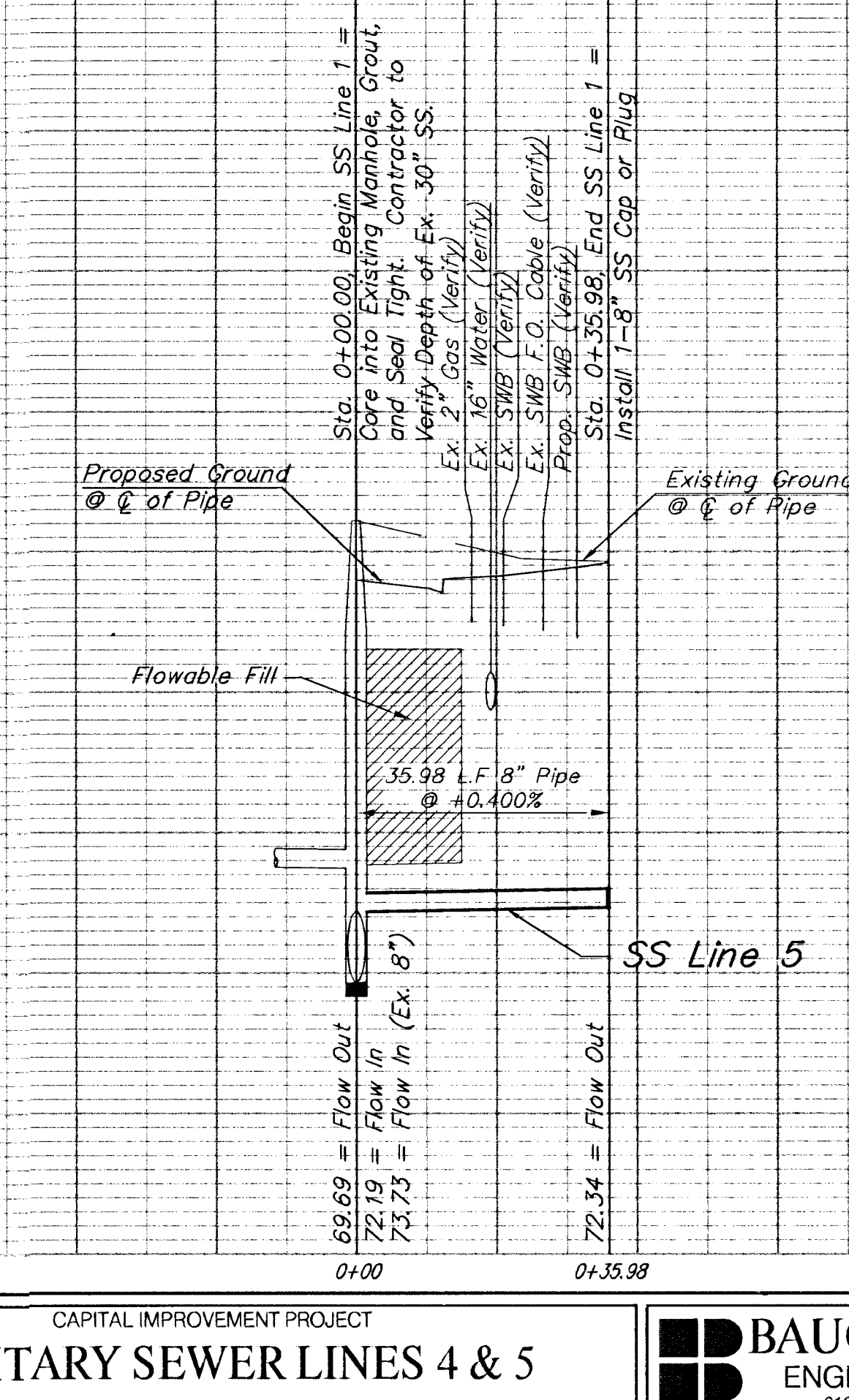
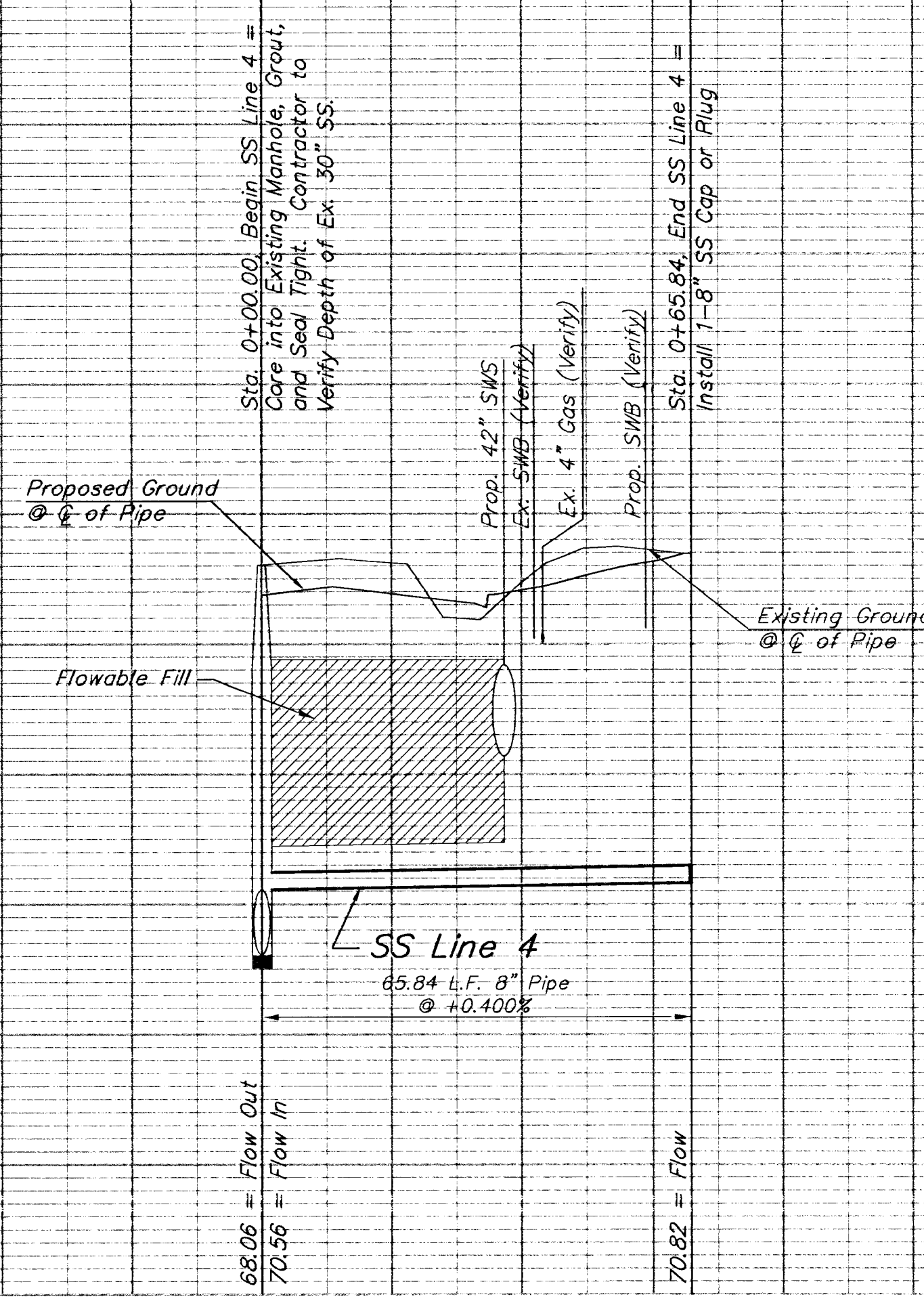
L.F. Quantity of Flowable Fill may be Underrun. L.F. Sand Flush & Fill may be Allowed in Lieu of Flowable Fill.

Contractor Shall Temporarily Replace All Roadway, Drive and Sidewalk Pavement as Necessary to Maintain All Pedestrian and Vehicular Traffic Until Construction of Permanent Pavement is Complete.

NOTE:
Trees/Shrubs to be removed are marked thus:



90			90	90		90
85			85	85		85
80			80	80		80
75			75	75		75
70			70	70		70
65			65	65		65
60			60	60		60



PROJECT NUMBER 472-76-245-83324	SHEET NAME SS02	ENGINEERING DIRECTORY F:\Eng\Hydraulic\SS
DESIGN TPV	DRAWN TPV	APPROVED JEB
DATE Sept. 2002	SCALE Noted	BAUGHMAN NO 99-09-E450

CAPITAL IMPROVEMENT PROJECT
SANITARY SEWER LINES 4 & 5
HYDRAULIC AVENUE PAVING - 47TH STREET SOUTH TO MACARTHUR ROAD

BAUGHMAN COMPANY, P.A.
ENGINEERING, SURVEYING, & PLANNING
316-262-7271 • 315 ELLIS • WICHITA, KANSAS 67211

SHEET
39
OF
102