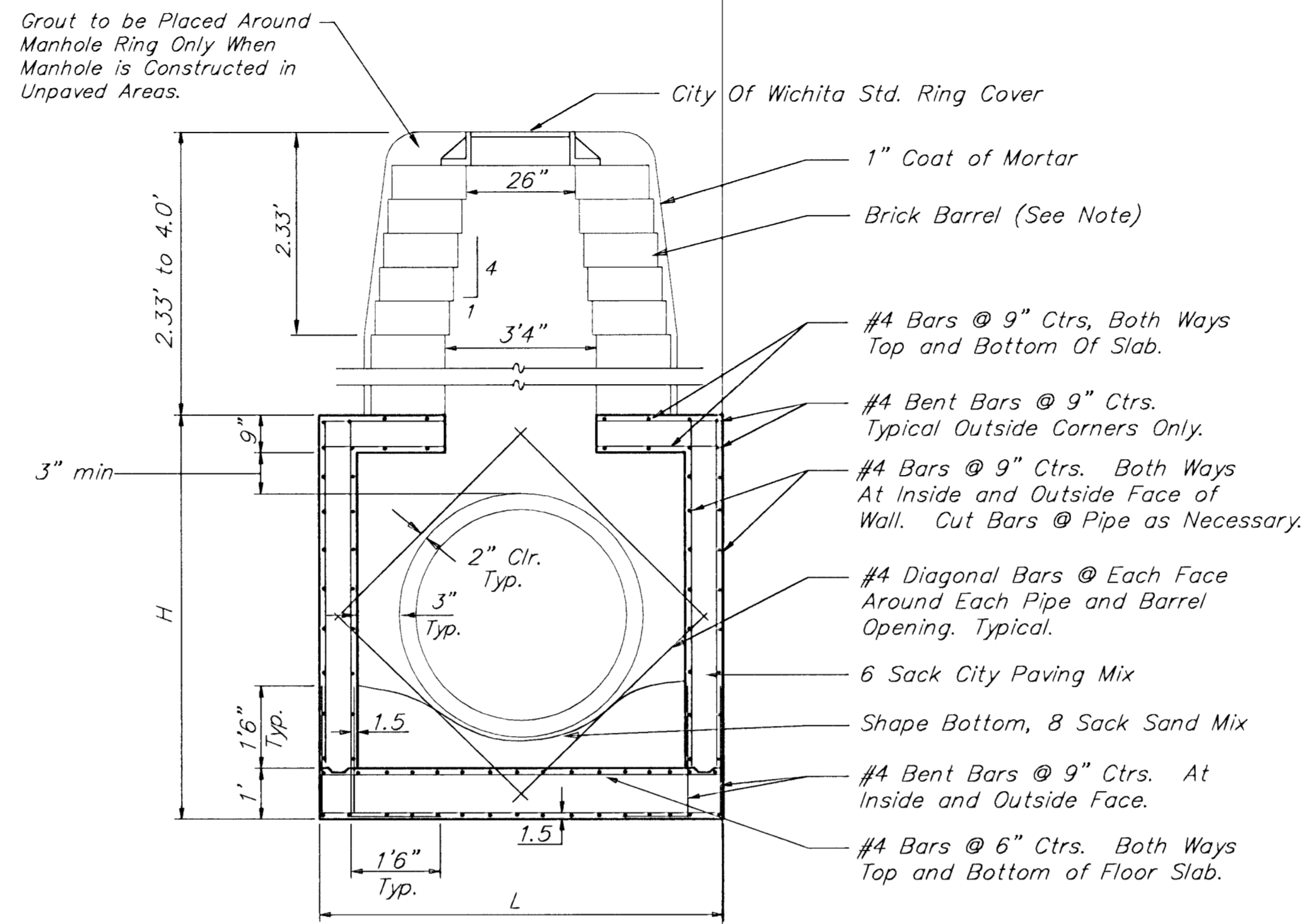
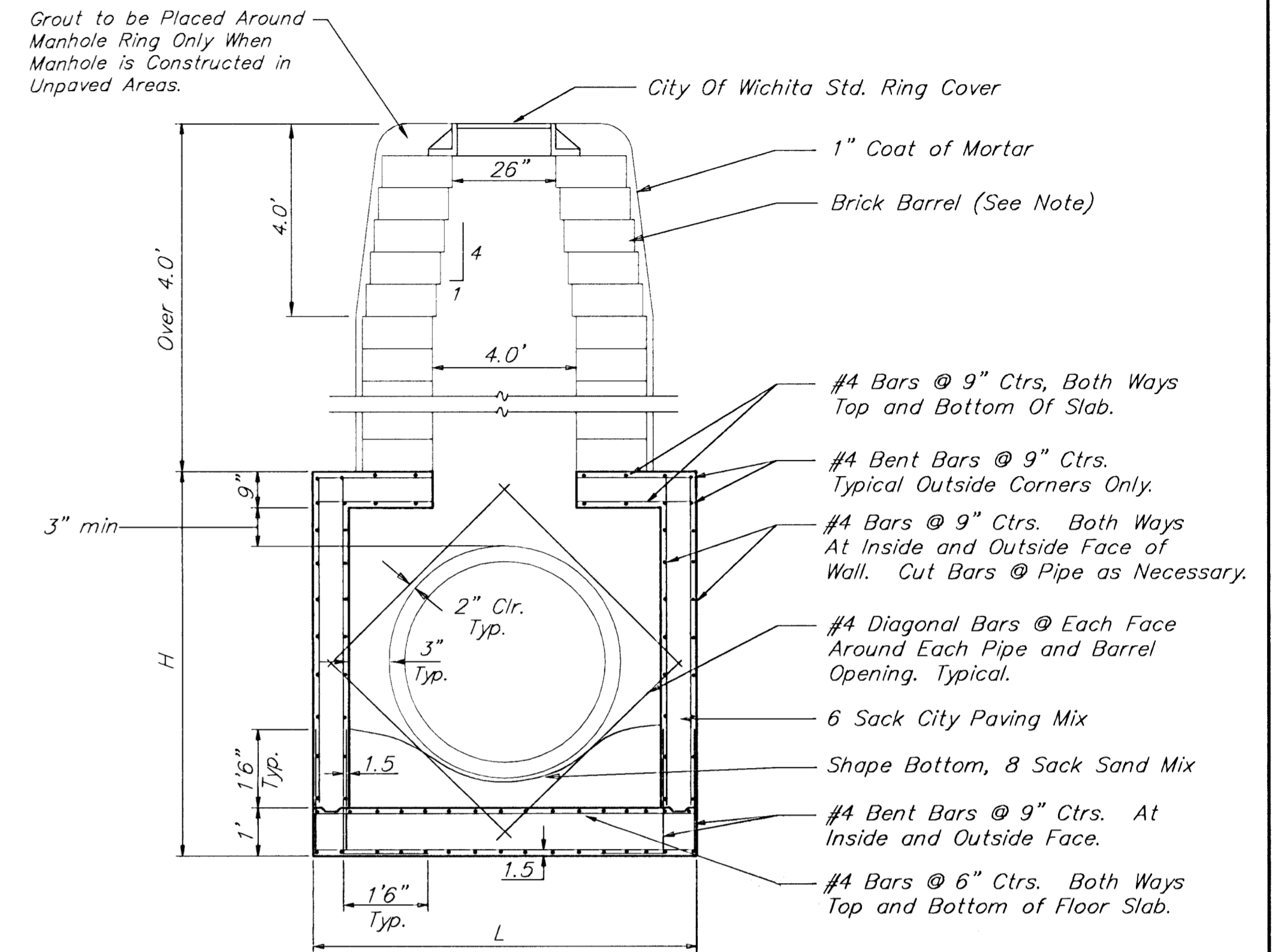


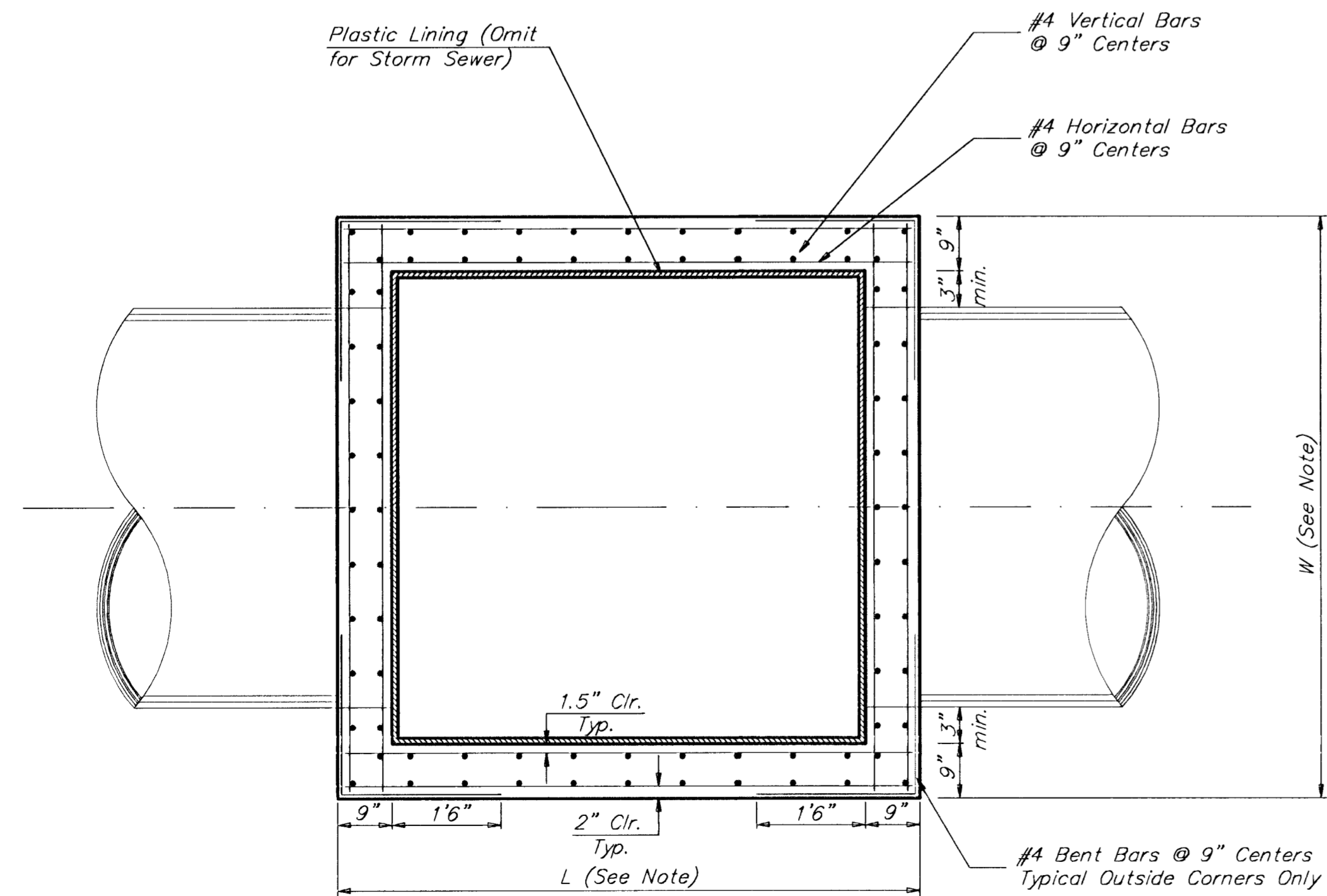
REINFORCED CONCRETE MANHOLE
DEPTH OF STACK: 0' TO 2.33'



REINFORCED CONCRETE MANHOLE
DEPTH OF STACK: 2.33' TO 4.0'



REINFORCED CONCRETE MANHOLE
DEPTH OF STACK: OVER 4.0'



TOP VIEW

Notes:

Brick barrels less than 16' deep shall have 8" walls except when located within public street or alley pavement; then the wall shall be 12". Brick barrels more than 16' deep shall have 12" walls. The "L" and "W" dimensions shall be a minimum of 5'6" for brick barrels with 8" walls and 6'2" for brick barrels with 12" walls when the brick barrels are over 4' in height. Completed manhole shall be without leaks and watertight.

Concrete wall thicknesses shown represents manhole type located within traffic bearing areas. Manhole wall, base, & top dimensions may be reduced when manholes are not subject to vehicle loads. Contractor shall be required to submit shop drawings to the Engineer for approval.

PROJECT NUMBER 472-76-245-83324		SHEET NAME RCMH		ENGINEERING DIRECTORY F:\Eng\Hydraulic\Details		CAPITAL IMPROVEMENT PROJECT			BAUGHMAN COMPANY, P.A. ENGINEERING, SURVEYING, & PLANNING 316-262-7271 • 315 ELLIS • WICHITA, KANSAS 67211	SHEET 42 OF 102
DESIGN C.O.W.	DRAWN STAFF	APPROVED	DATE Sept. 02	SCALE None	BAUGHMAN NO 99-09-E450	REINFORCED CONCRETE MANHOLE HYDRAULIC AVENUE PAVING - 47TH STREET SOUTH TO MACARTHUR ROAD				