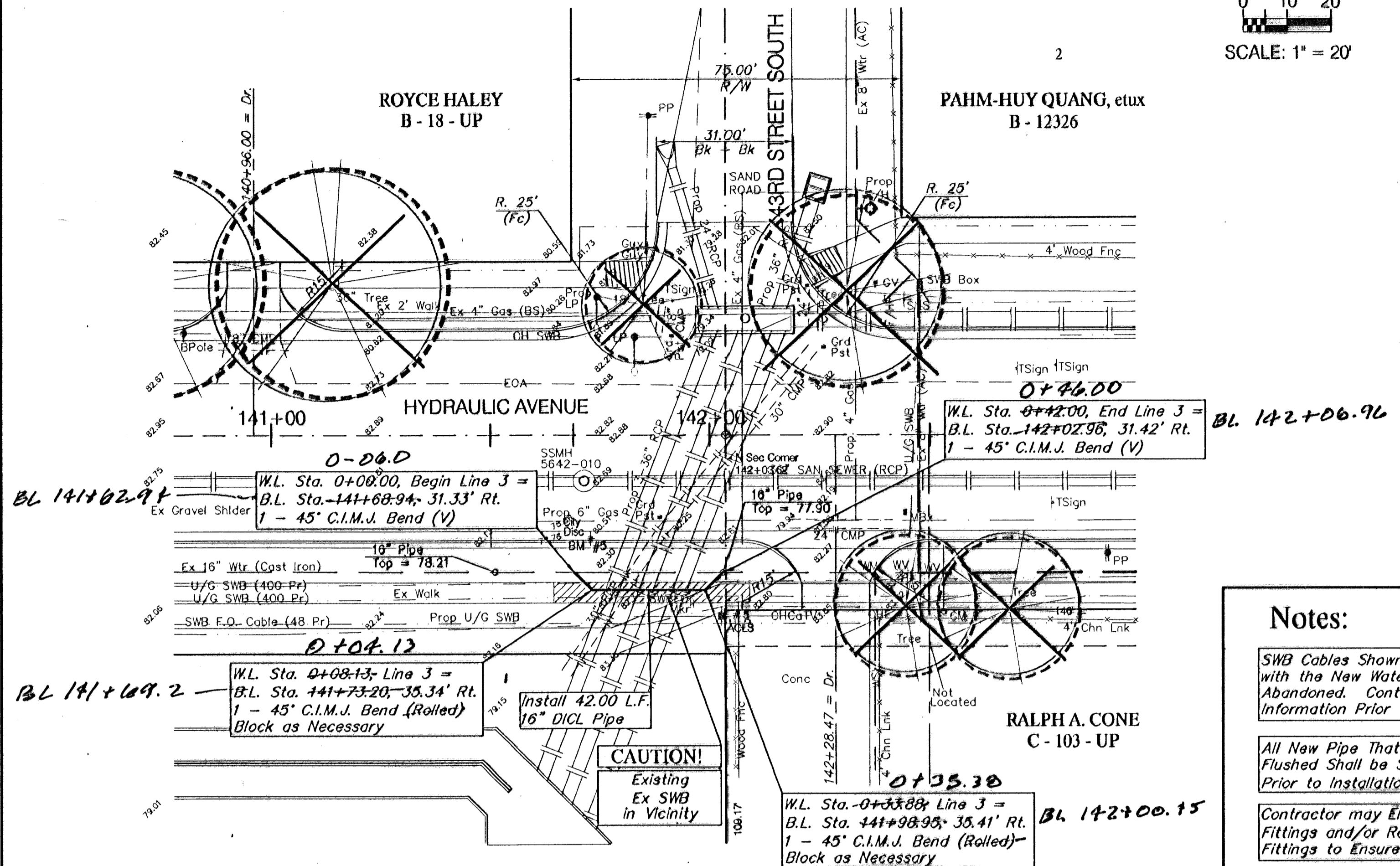
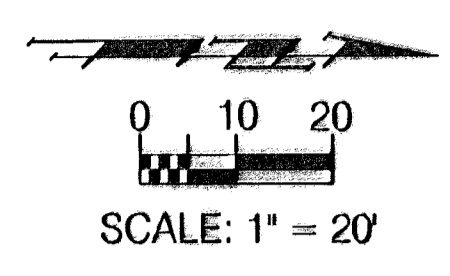


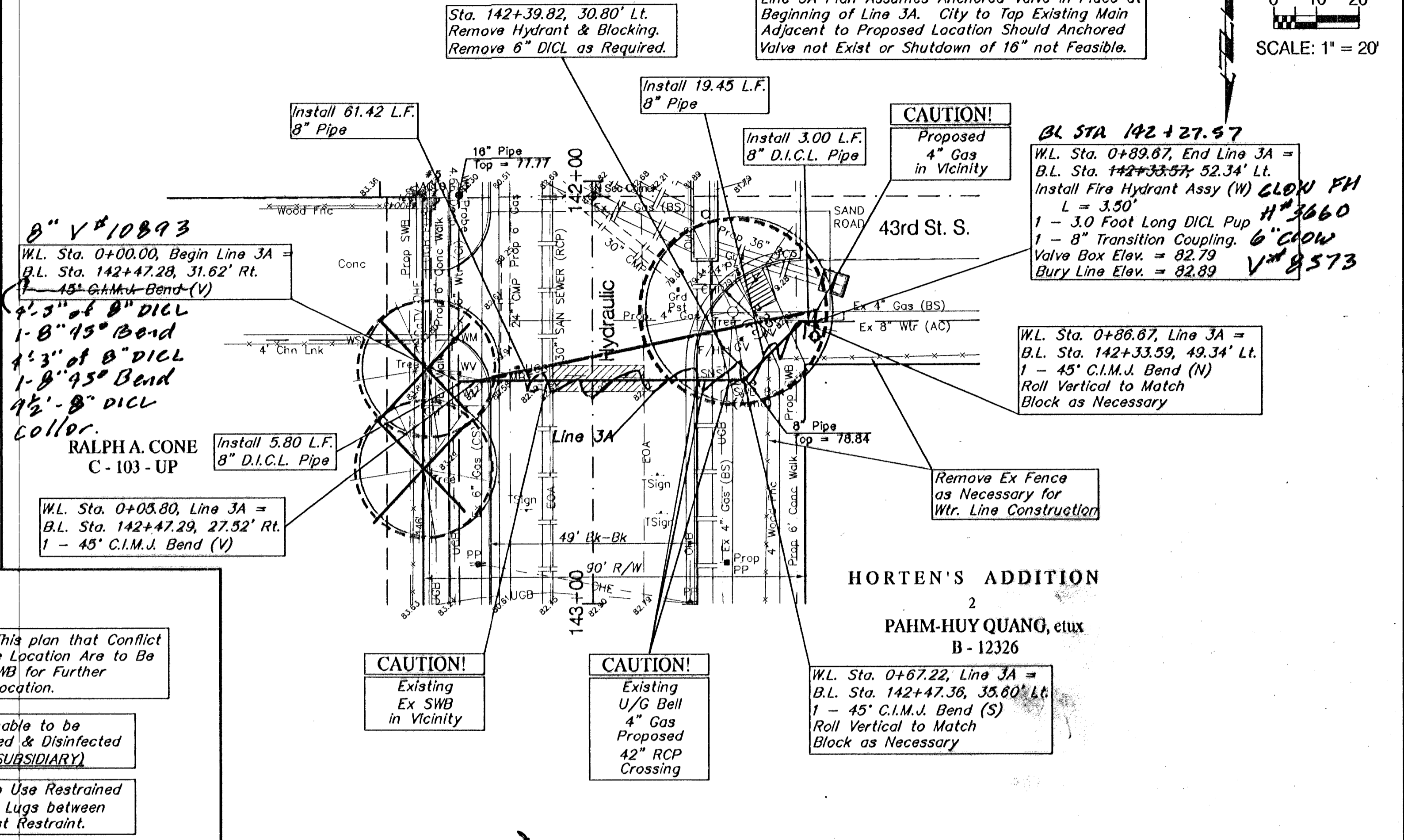
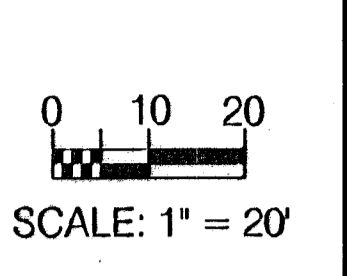
BENCHMARK:

BM #5 - City of Wichita Bench Mark Disc, 35' South and 25' East of Centerlines Hydraulic and 43rd St. South. Sta. 141+72.24, 25' Rt. Elev. = 82.13 (City Datum)



BENCHMARK:

BM #5 - City of Wichita Bench Mark Disc, 35' South and 25' East of Centerlines Hydraulic and 43rd St. South. Sta. 141+72.24, 25' Rt. Elev. = 82.13 (City Datum)

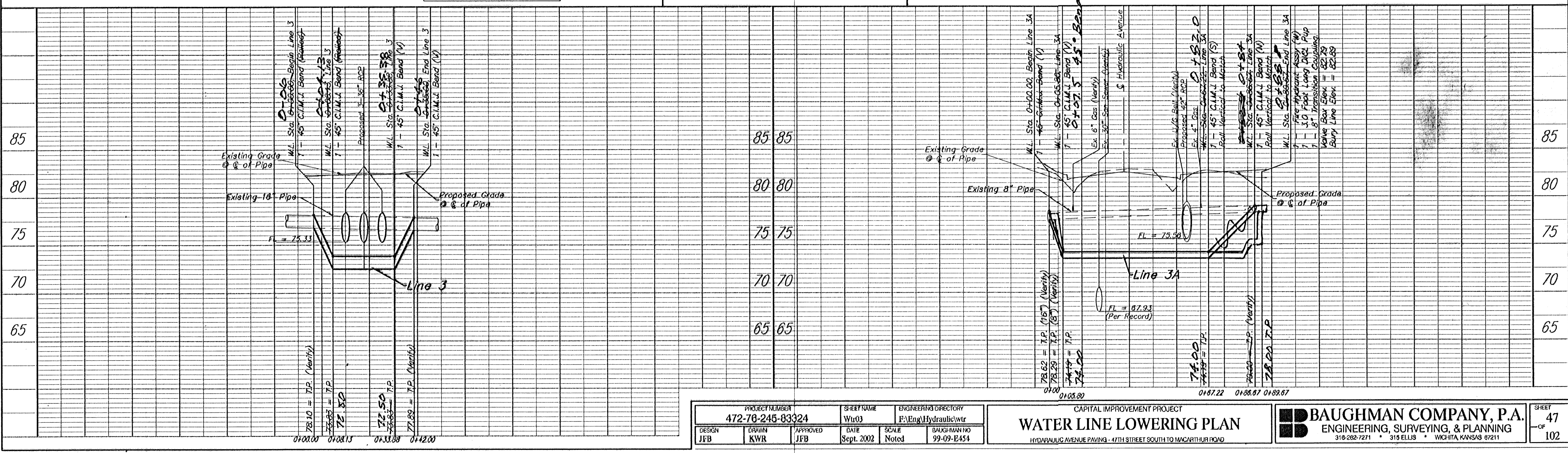


Notes:

SWB Cables Shown on This plan that Conflict with the New Water Line Location Are to Be Abandoned. Contact SWB for Further Information Prior to Relocation.

All New Pipe That is Unable to be Flushed Shall be Swabbed & Disinfected Prior to Installation. (SUBSIDIARY)

Contractor may Elect to Use Restrained Fittings and/or Rods & Lugs between Fittings to Ensure Thrust Restraint.



PROJECT NUMBER 472-78-245-83324		SHEET NAME Wtr03		ENGINEERING DIRECTORY PA/Eng/Utility/wtr		CAPITAL IMPROVEMENT PROJECT		BAUGHMAN COMPANY, P.A. ENGINEERING, SURVEYING, & PLANNING 318-282-7271 • 319 ELLIS • WICHITA, KANSAS 67211		SHEET 47 OF 102
DESIGN JFB	DRAWN KWR	APPROVED JFB	DATE Sept. 2002	SCALE Noted	BAUGHMAN NO 99-09-E454	WATER LINE LOWERING PLAN HYDRAULIC AVENUE PAVING - 47TH STREET SOUTH TO MACARTHUR ROAD				