

EXISTING	LEGEND	PROPOSED
---	PROPERTY LINE	---
==	PAVEMENT	==
---	TELEPHONE	T---
---	ELECTRIC	E---
---	WATER	---
---	SANITARY SEWER	S---
---	GAS	G---
---	STORM SEWER	---

**BENCHMARKS:**

BM1 = SQUARE CUT SW CORNER OF CURB INLET @ NW CORNER LOT 2, BLOCK A. WILDCAT-KELLOGG ADDITION.

ELEV. = 1371.24' N.A.V.D. 88

BM2 = SQUARE CUT TOP OF CURB 14.5' WEST OF MOST WESTERLY SW CORNER LOT 4, BLOCK A (NOTED ON PLAT AS SW COR., LOT 2, PAUL BURNETT 2ND ADD).

ELEV. = 1370.56' N.A.V.D. 88

**NOTES**

- BOUNDARY & TOPOGRAPHIC BASED ON SURVEY BY MKEC ENGINEERING-WICHITA, KS. DATED 03/08/2019.

**UTILITY NOTES**

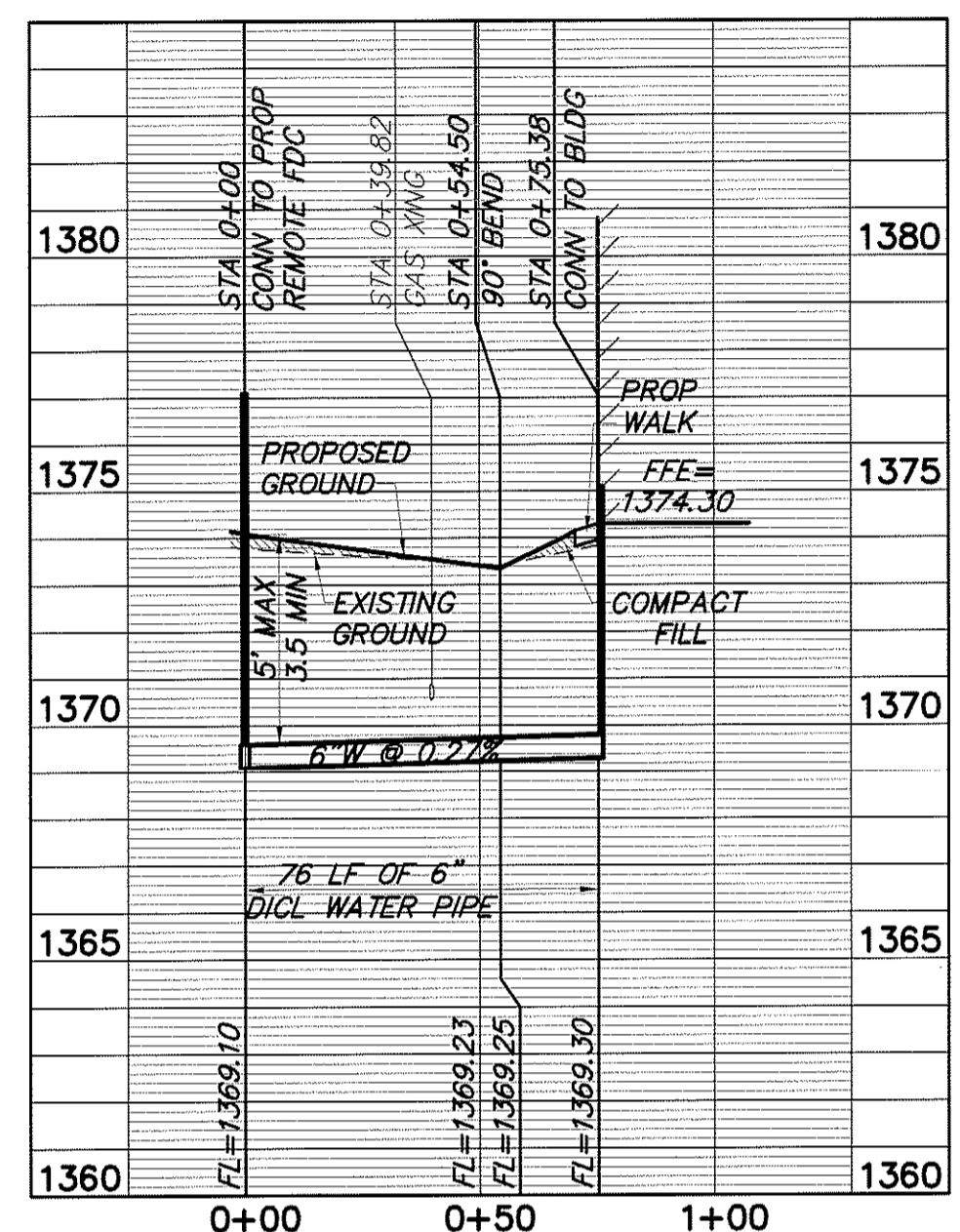
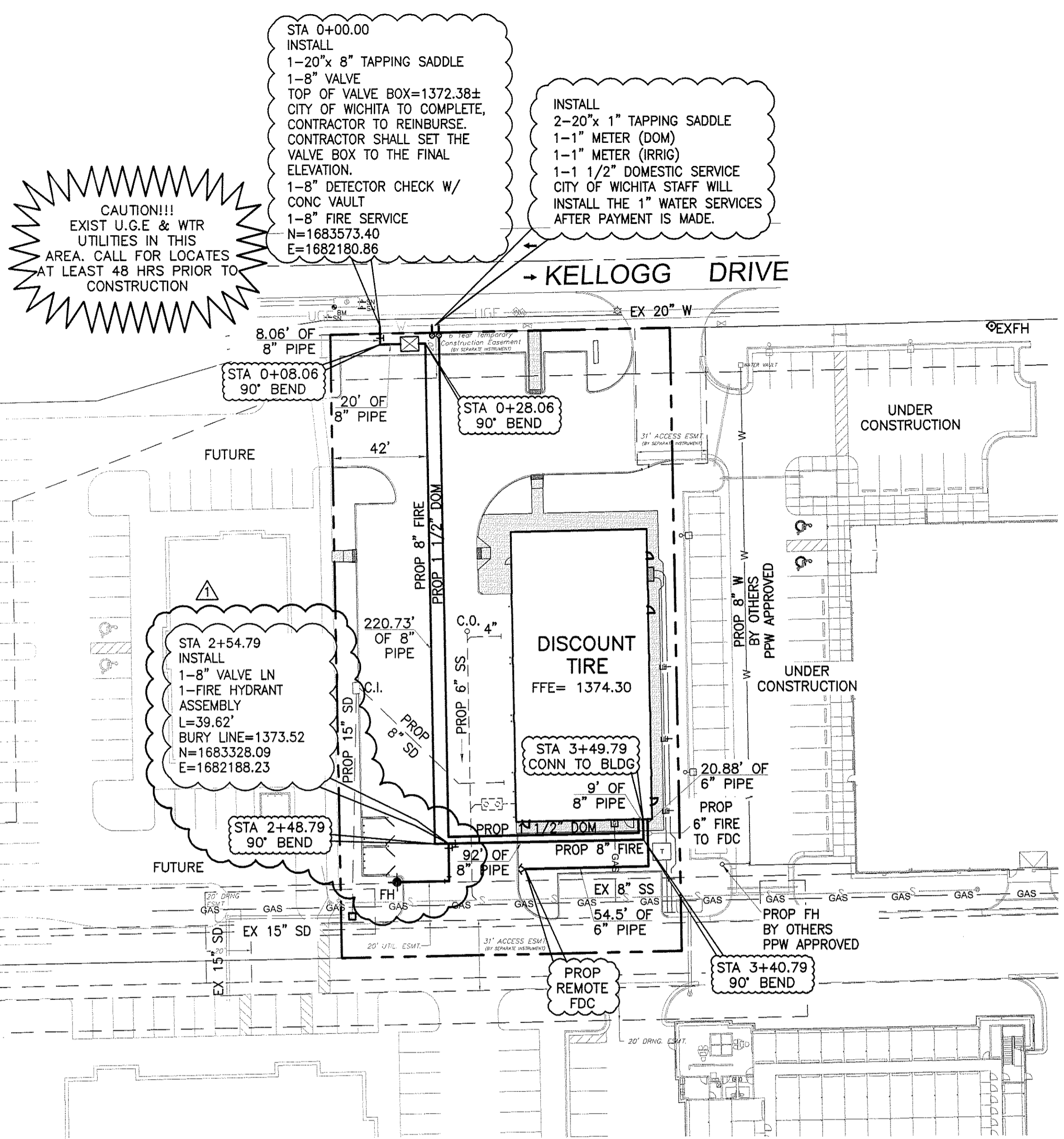
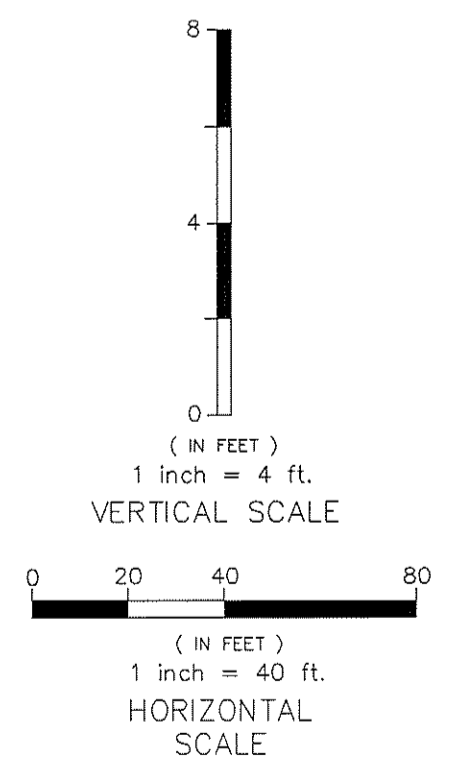
- 6" AND 8" WATER PIPE WILL BE DICL WATER PIPE.
- ALL WORK SHALL BE IN ACCORDANCE WITH THE CITY'S STANDARDS AND SPECIFICATIONS.
- CONTRACTOR SHALL COORDINATE ALL CONNECTIONS TO PUBLIC MAINS WITH THE CITY.
- ALL TRENCHING SHALL BE IN ACCORDANCE WITH LATEST OSHA STANDARDS AND SPECIFICATIONS.
- CONTRACTOR SHALL CALL FOR UTILITY LOCATES AT LEAST 48 HRS PRIOR TO BEGINNING CONSTRUCTION.
- CONTRACTOR SHALL ADJUST ALL UTILITY APPURTENANCES TO FINAL GRADE.
- WATER AND SEWER CROSSINGS SHALL BE PER THE LATEST DEQ REQUIREMENTS.
- CONTRACTOR SHALL NOTIFY ENGINEER OF ANY UTILITY CONFLICTS AS SOON AS POSSIBLE.
- CONTRACTOR SHALL COORDINATE WITH FRANCHISE UTILITY COMPANIES PRIOR TO INSTALLING ANY CONDUITS.

**UTILITY CONTACTS:**

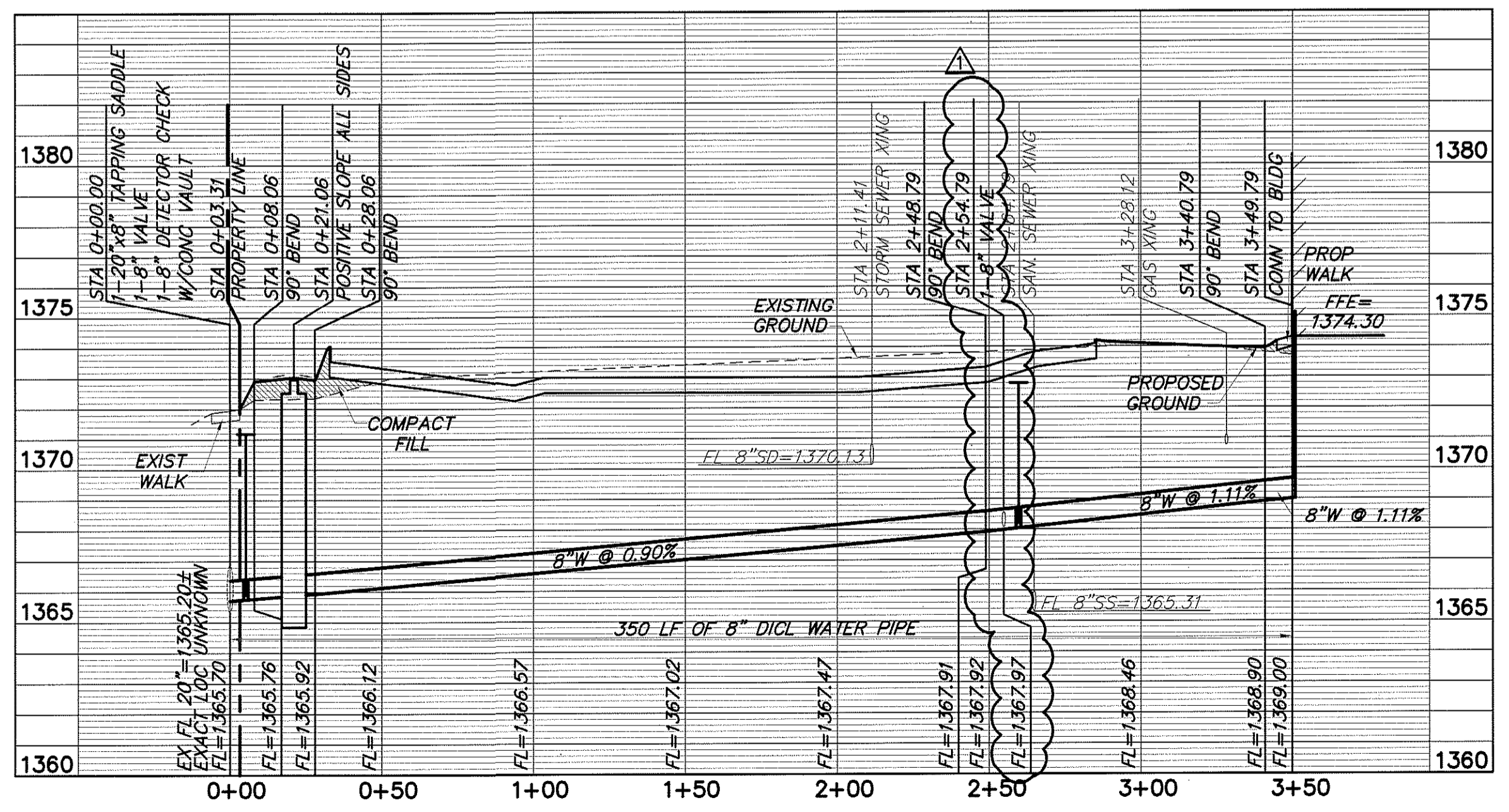
**ELECTRIC CO.**  
 WESTAR ENERGY  
 CONTACT: LADONNA VANDERFORD  
 316-261-6290

**TELEPHONE CO.**  
 AT&T  
 CONTACT: JASON EDWARDS  
 316-268-2008

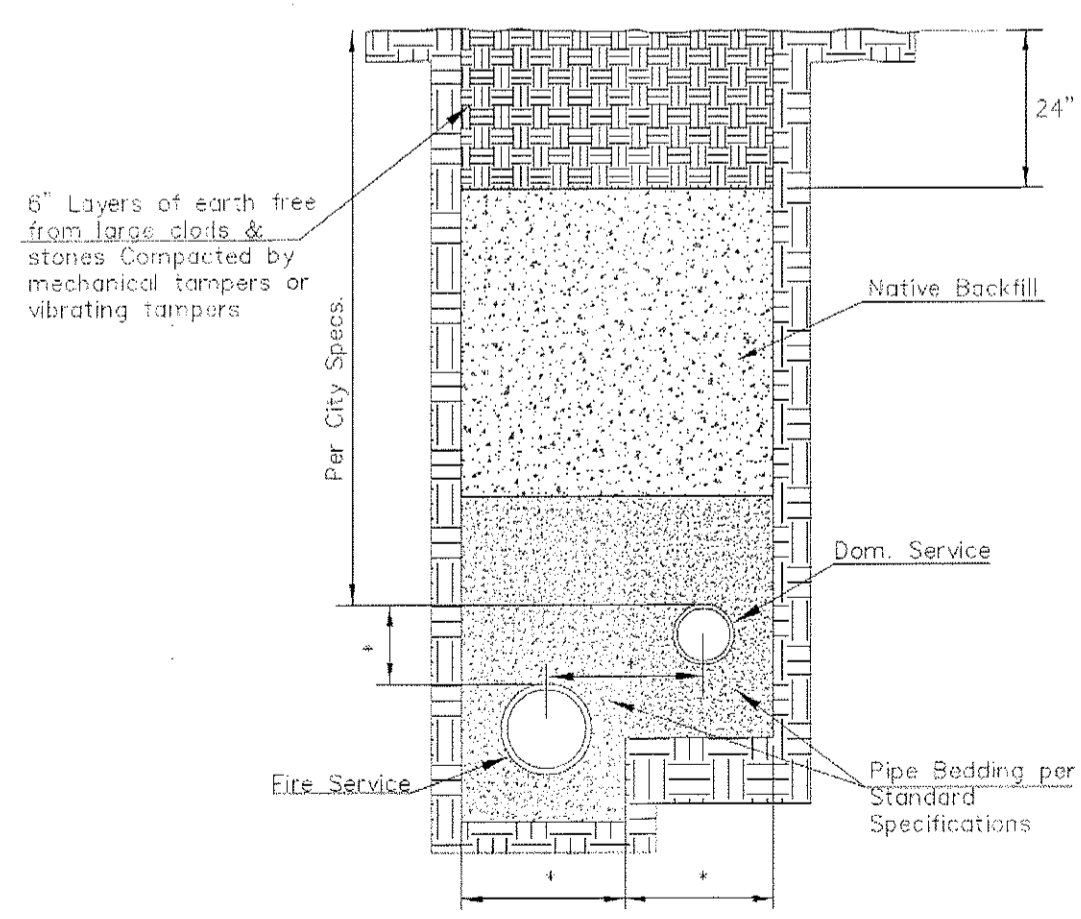
**GAS CO.**  
 KANSAS GAS SERVICE  
 CONTACT: CINDY LITTLE JOHN  
 316-831-5564



**6" FDC FIRE LINE SERVICE**



**PROP 8" FIRE LINE SERVICE**



**COMBINED TRENCH SECTION & COMPACTION ON PRIVATE PROPERTY**

\* TRENCH SIZE AND STAIR STEP SHALL BE BASED ON THRUST BLOCK REQUIREMENTS AGAINST VIRGIN SOIL OR CONTRACTOR MAY OPT TO USE RESTRAINED JOINT PIPE MATERIAL. THE SIZE AND DEPT OF THE FIRE & DOMESTIC LINES WILL BE DETERMINED AS SHOWN ON THE PLANS.

**CONSTRUCTION DOCUMENT**

NO.	REVISIONS DESCRIPTION	DATE
1	FH REVISION	7/23/2019

500.110	JOB NO.
06/19/2019	DATE
J.J.V.	DRAWN BY
J.J.V.	CHECKED BY



WATER MAIN & PROFILE

**C1**