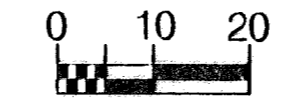


BENCHMARK:

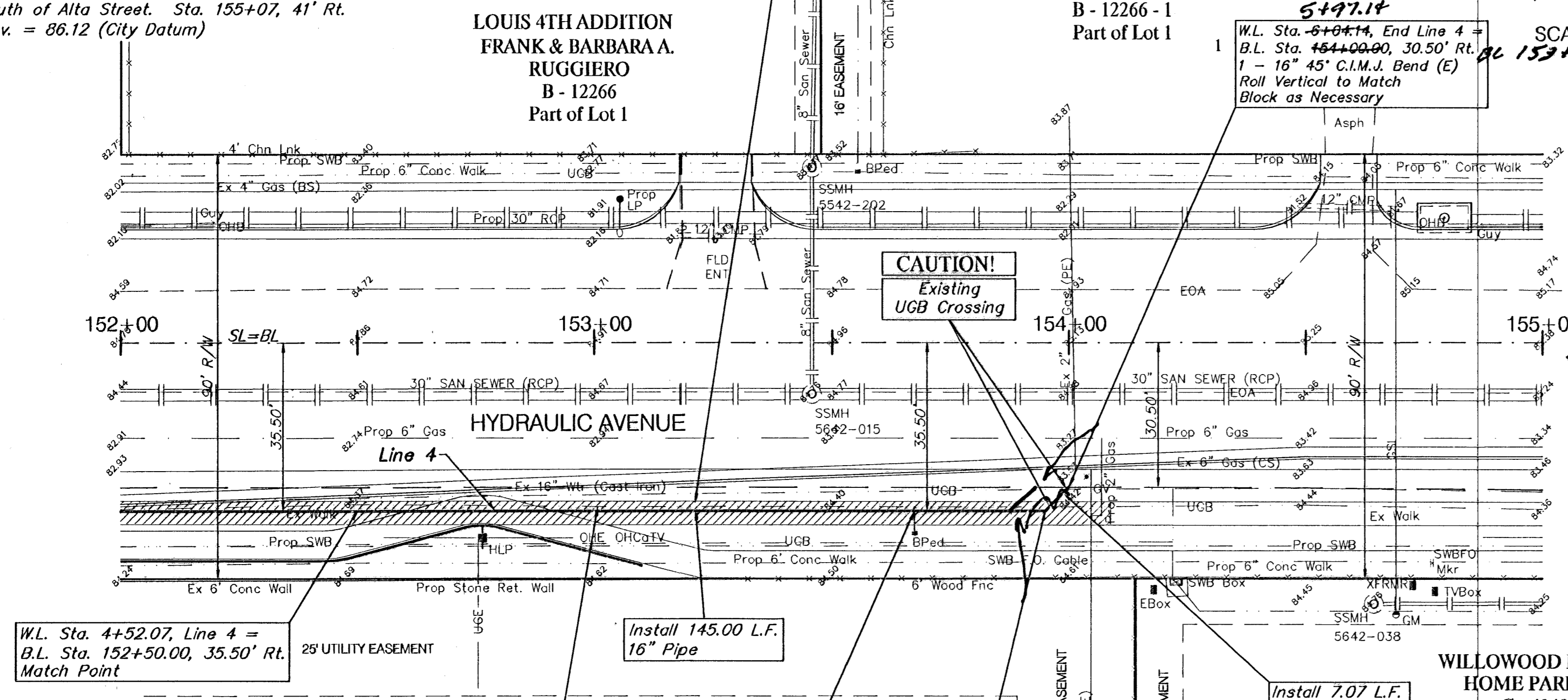
- BM #6 - RR Spike in West face of HLP, East side of Hydraulic, South of Georgia St. Sta. 147+70, 43' Rt. Elev. 84.51 (City Datum)
- BM #7 - RR Spike in West face of HLP, East side of Hydraulic, South of Alta Street. Sta. 135+07, 41' Rt. Elev. = 86.12 (City Datum)

Remove Conc. Sidewalk as Necessary for Construction. Install Temp Walk Section (Cold Mix or Other Approved Surface Material) Permanent Sidewalk to be Replaced with Paving Project.

FRANK & BARBARA A. RUGGIERO B - 12266 - 1 Part of Lot 1



SCALE: 1" = 20'



W.L. Sta. 4+52.07, Line 4 = B.L. Sta. 152+50.00, 35.50' Rt. Match Point

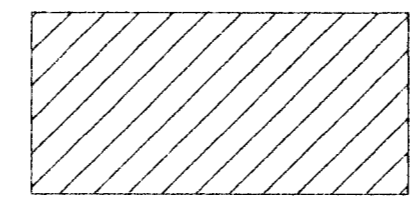
CAUTION!
Existing U/G Bell in Vicinity

CAUTION!
Existing UGB Crossing

W.L. Sta. 5+97.07, Line 4 = B.L. Sta. 153+95.00, 35.50' Rt. 1 - 16" 45° C.I.M.J. Bend (W) Roll Vertical to Match Block as Necessary

Note:

Pavement, Sidewalks, and Etc. To Be Removed Are Indicated By:



Contractor Shall Temporarily Replace All Roadway, Drive and Sidewalk Pavement as Necessary to Maintain All Pedestrian and Vehicular Traffic Until Construction of Permanent Pavement is Complete.

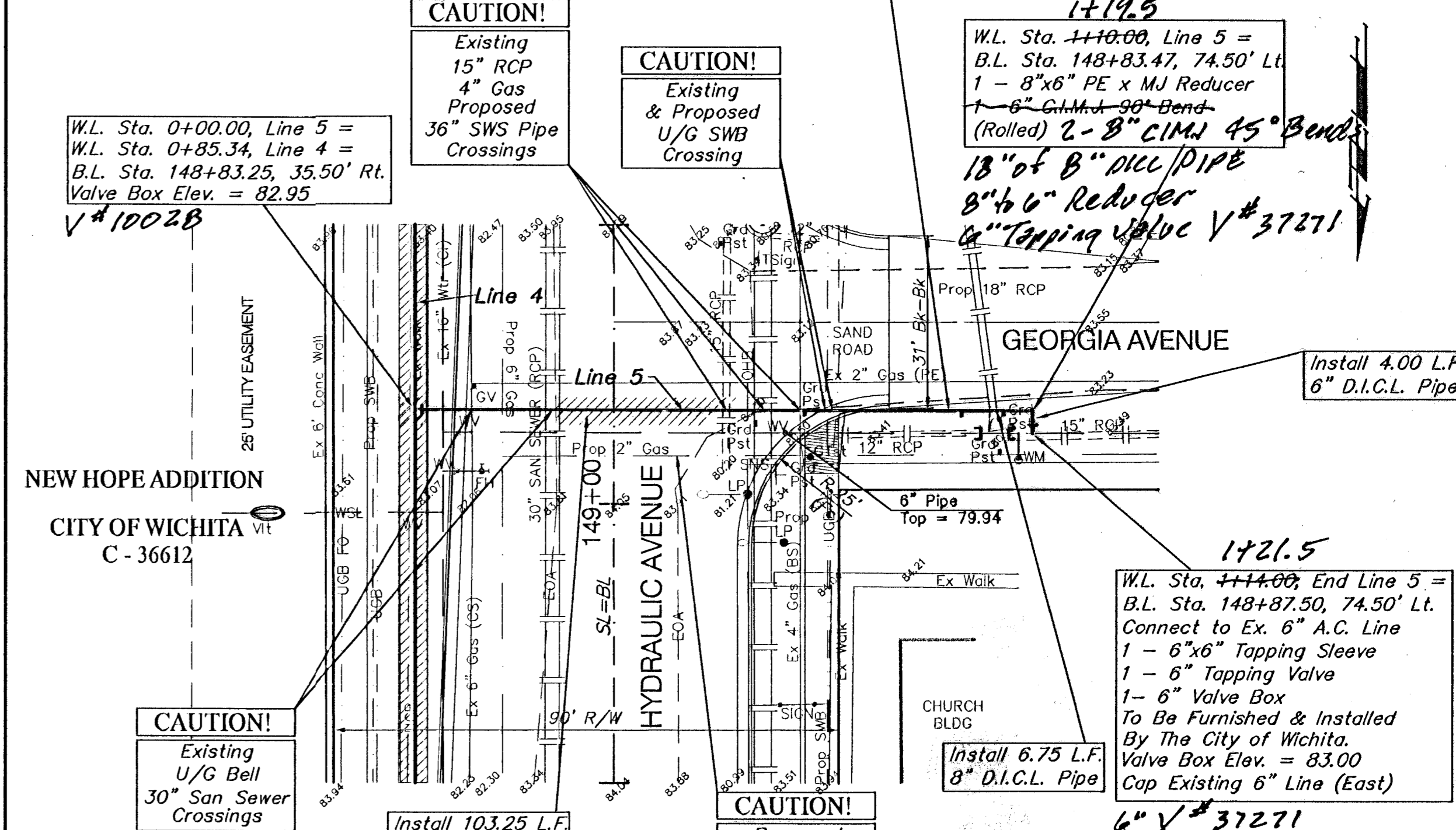
BENCHMARK:

- BM #6 - RR Spike in West face of HLP, East side of Hydraulic, South of Georgia St. Sta. 147+70, 43' Rt. Elev. 84.51 (City Datum)

W.L. Sta. 1+03.25, Line 5 = B.L. Sta. 148+83.47, 67.75' Lt. 1 - 45° C.I.M.J. Bend (W)



SCALE: 1" = 20'



W.L. Sta. 0+00.00, Line 5 = W.L. Sta. 0+85.34, Line 4 = B.L. Sta. 148+83.25, 35.50' Rt. Valve Box Elev. = 82.95

CAUTION!
Existing 15" RCP

CAUTION!
Existing & Proposed U/G SWB Crossing

W.L. Sta. 1+19.5, Line 5 = B.L. Sta. 148+83.47, 74.50' Lt. 1 - 8"x6" PE x MJ Reducer 1 - 6" C.I.M.J. 90° Bend (Rolled) 2 - 8" C.I.M.J. 45° Bends

18" of 8" D.I.C.L. PIPE 8" to 6" Reducer 6" Tapping Valve V# 37271

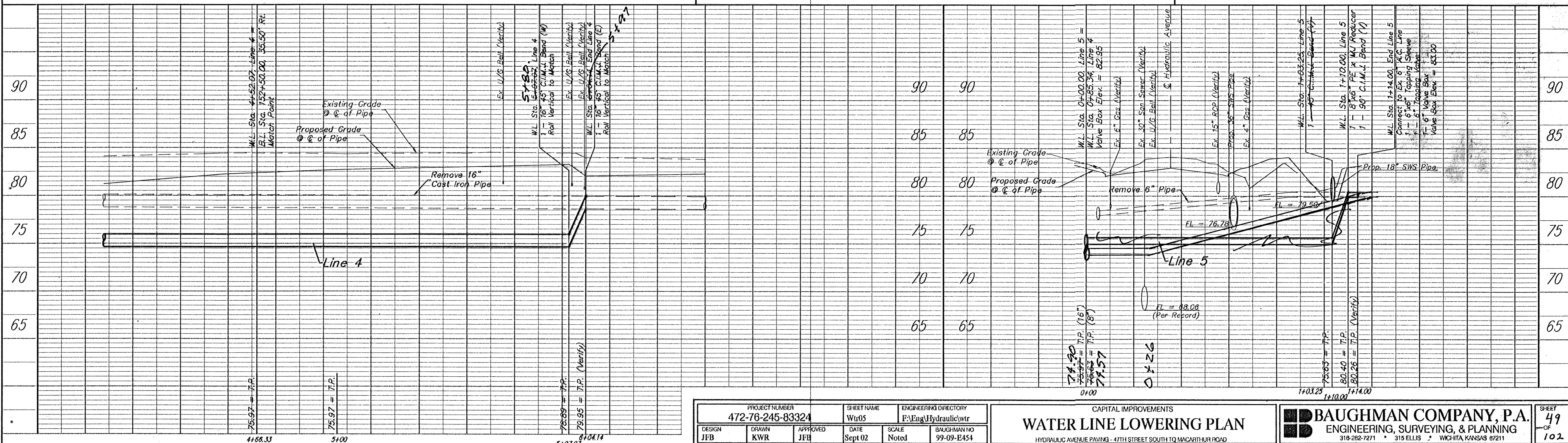
W.L. Sta. 1+14.00, End Line 5 = B.L. Sta. 148+87.50, 74.50' Lt. Connect to Ex. 6" A.C. Line 1 - 6"x6" Tapping Sleeve 1 - 6" Tapping Valve 1 - 6" Valve Box To Be Furnished & Installed By The City of Wichita. Valve Box Elev. = 83.00 Cap Existing 6" Line (East) 6" V# 37271

CAUTION!
Existing U/G Bell 30" San Sewer Crossings

Install 103.25 L.F. 8" Pipe

CAUTION!
Proposed 2" Gas in Vicinity

Install 6.75 L.F. 8" D.I.C.L. Pipe



PROJECT NUMBER 472-76-245-83324			SHEET NAME Wtr05		ENGINEERING DIRECTORY FA/Eng/Hydraulic/wtr	
DESIGN JFB	DRAWN KWR	APPROVED JFB	DATE Sept 02	SCALE Noted	BAUGHMAN NO 99-09-E454	
CAPITAL IMPROVEMENTS WATER LINE LOWERING PLAN HYDRAULIC AVENUE PAVING - 4TH STREET SOUTH TO MCARTHUR ROAD					BAUGHMAN COMPANY, P.A. ENGINEERING, SURVEYING, & PLANNING 318-282-7271 • 315 ELLIS • WICHITA, KANSAS 67211	