

BENCHMARK:

BM #7 - RR Spike in West face of HLP, East side of Hydraulic,
South of Alta Street. Sta. 155+07, 41' Rt.
Elev. = 86.12 (City Datum)

WILLOWOOD MOBILE HOME PARK INC
C-43491
CAMELOT ADDITION

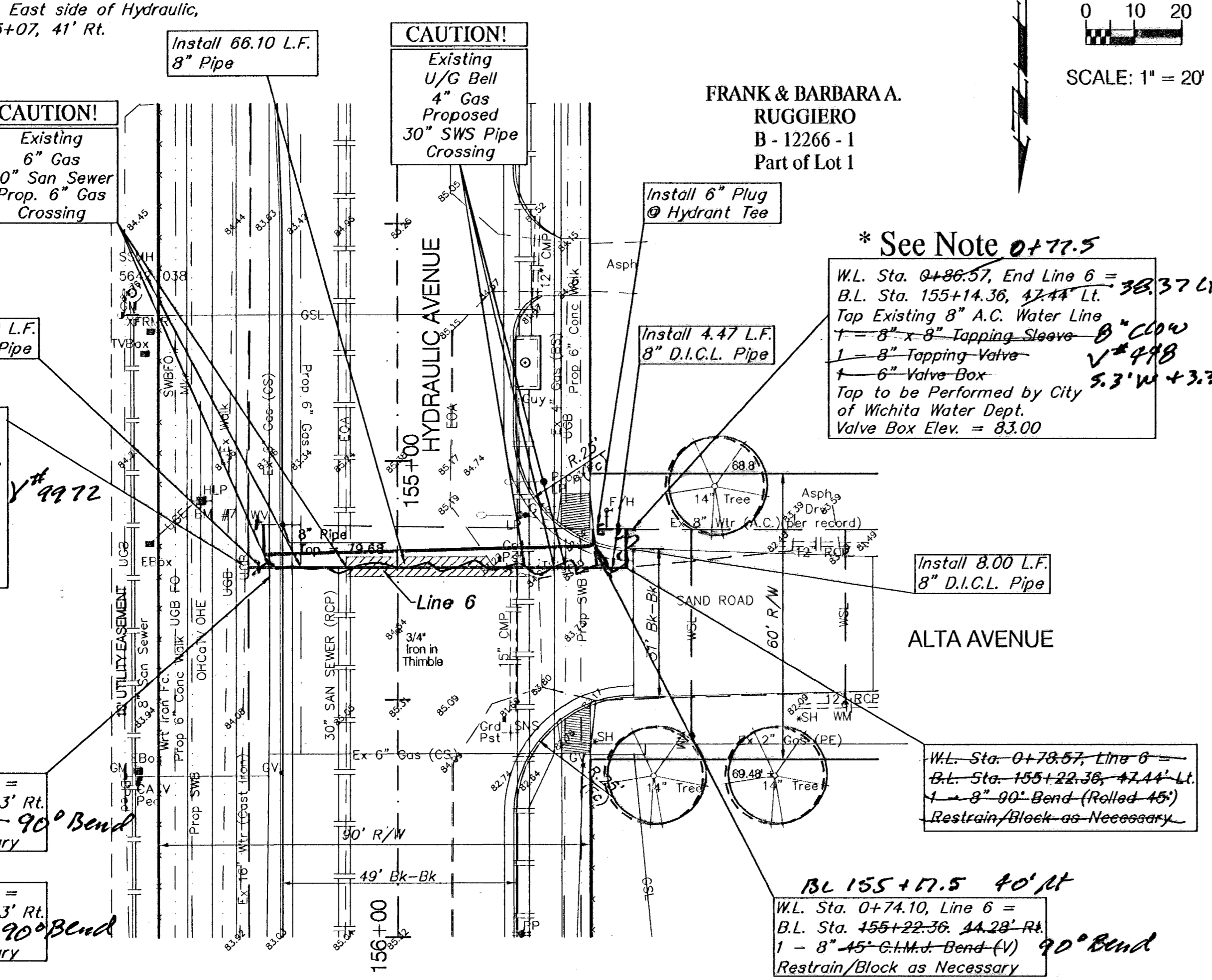
BL 155+12.94

W.L. Sta. 0+00.00, Begin Line 6 =
B.L. Sta. 155+22.38, 31.13' Rt.
Tap Existing 16" C.I. Water Line
1 - 16" x 8" Tapping Sleeve
1 - 8" Tapping Valve
1 - 8" Valve Box
Tap to be Performed by City of Wichita Water Dept.
Valve Box Elev. = 82.90

Exist Valve
Mead-Lug
90° Bend (N)
8" D.I.C.L. PIPE
90° Bend (W)
6.2" 8" D.I.C.L. Coupler

W.L. Sta. 0+03.50, Line 6 =
B.L. Sta. 155+22.38, 26.63' Rt.
1 - 45° C.I.M.J. Bend (V) - 90° Bend
Restraining/Block as Necessary

W.L. Sta. 0+08.00, Line 6 =
B.L. Sta. 155+22.38, 24.43' Rt.
1 - 45° C.I.M.J. Bend (V) 90° Bend
Restraining/Block as Necessary



BENCHMARK:

BM #8 - RR Spike in West face of HLP, East side of Hydraulic,
at the Centerline of Selma St. Sta. 162+06, 41' Rt.
Elev. = 89.66 (City Datum)

FIRST PENTECOSTAL CHURCH
C-39462
ED DWIRE ADDITION

BL 162+16.25

W.L. Sta. 0+00.00, Begin Line 7 =
B.L. Sta. 162+08.36, 30.55' Rt.
Tap Existing 16" C.I. Water Line
1 - 16" x 8" Tapping Sleeve
1 - 8" Tapping Valve
1 - 8" Valve Box
Tap to be Performed by City of Wichita Water Dept.
Valve Box Elev. = 86.00

W.L. Sta. 0+04.50, Line 7 =
B.L. Sta. 162+08.35, 26.05' Rt.
1 - 8" x 6" P.E. x M.J. Reducer
Block as Necessary

W.L. Sta. 0+07.50, Line 7 =
B.L. Sta. 162+08.35, 23.95' Rt.
1 - 45° C.I.M.J. Bend (V)
Block as Necessary

Note:
Tapping Existing A.C. Water Lines may be Eliminated if it can be Determined that Connection to A.C. Line is Feasible and Disruption to Service can be Minimized. Contractor to Use Transition Couplings to Connect to A.C. Water Line.

