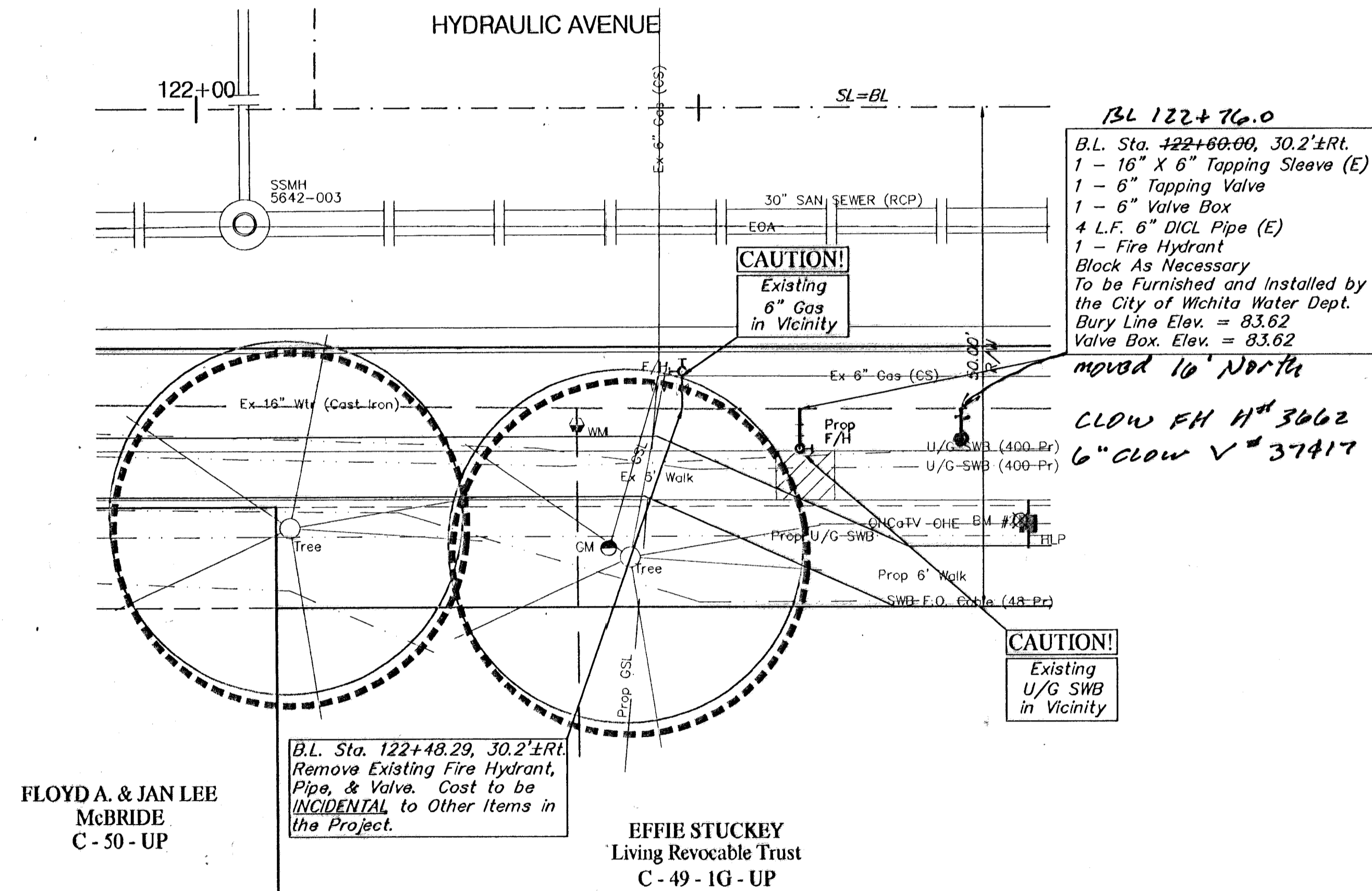
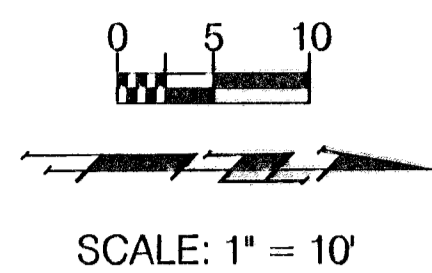


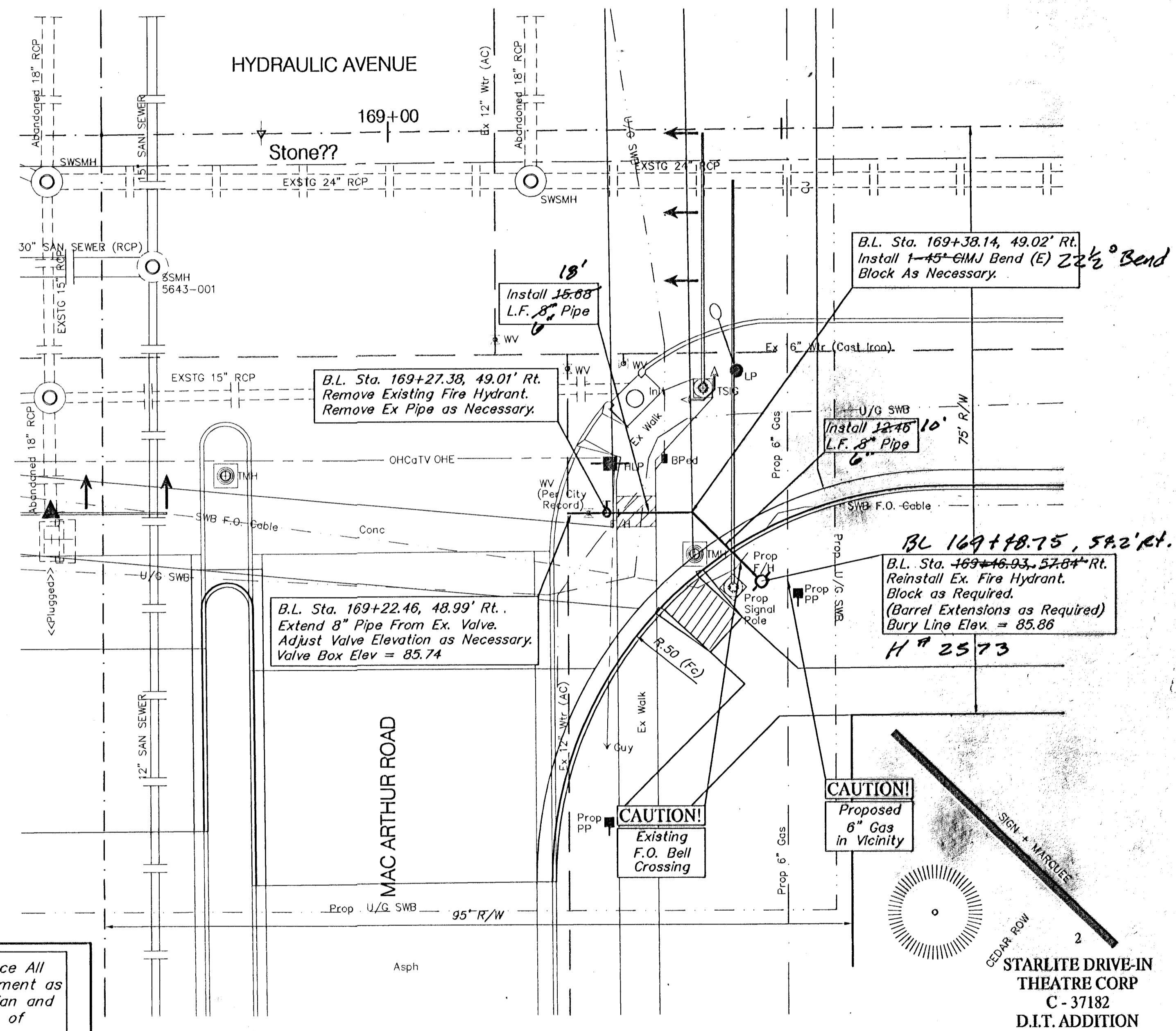
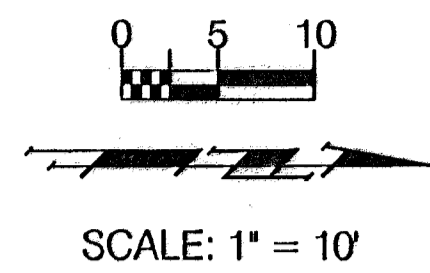
**BENCHMARK:**

BM #2 - RR Spike in West face of HLP, East side of Hydraulic, South of Fernwood and North of 46th St. South. Sta. 122+83, 41' Rt. Elev. = 85.33 (City Datum)



**BENCHMARK:**

BM #9 - City of Wichita Bench Mark Disc, 48.6' South and 32.4' West of Centerlines Hydraulic and Mac Arthur Sta. 168+35.3, 32.4' Rt. Elev. = 86.98 (City Datum)



Contractor Shall Temporarily Replace All Roadway, Drive and Sidewalk Pavement as Necessary to Maintain All Pedestrian and Vehicular Traffic Until Construction of Permanent Pavement is Complete.

Note:  
Pavement, Sidewalks, and Etc. To Be Removed Are Indicated By:

|                                    |              |                    |                    |  |                           |
|------------------------------------|--------------|--------------------|--------------------|--|---------------------------|
| PROJECT NUMBER<br>472-76-245-83324 |              | SHEET NAME<br>FH02 |                    | ENGINEERING DIRECTORY<br>F:Eng/Hydraulic/wtr |                           |
| DESIGN<br>JFB                      | DRAWN<br>KWR | APPROVED<br>JFB    | DATE<br>Sept. 2002 | SCALE<br>Noted                               | BAUGHMAN NO<br>99-09-E450 |

CAPITAL IMPROVEMENT PROJECT  
**FIRE HYDRANT RELOCATIONS**  
HYDRAULIC AVENUE PAVING - 47TH STREET SOUTH TO MACARTHUR ROAD

**BAUGHMAN COMPANY, P.A.**  
ENGINEERING, SURVEYING, & PLANNING  
310-262-7271 • 315 ELLIS • WICHITA, KANSAS 67211