

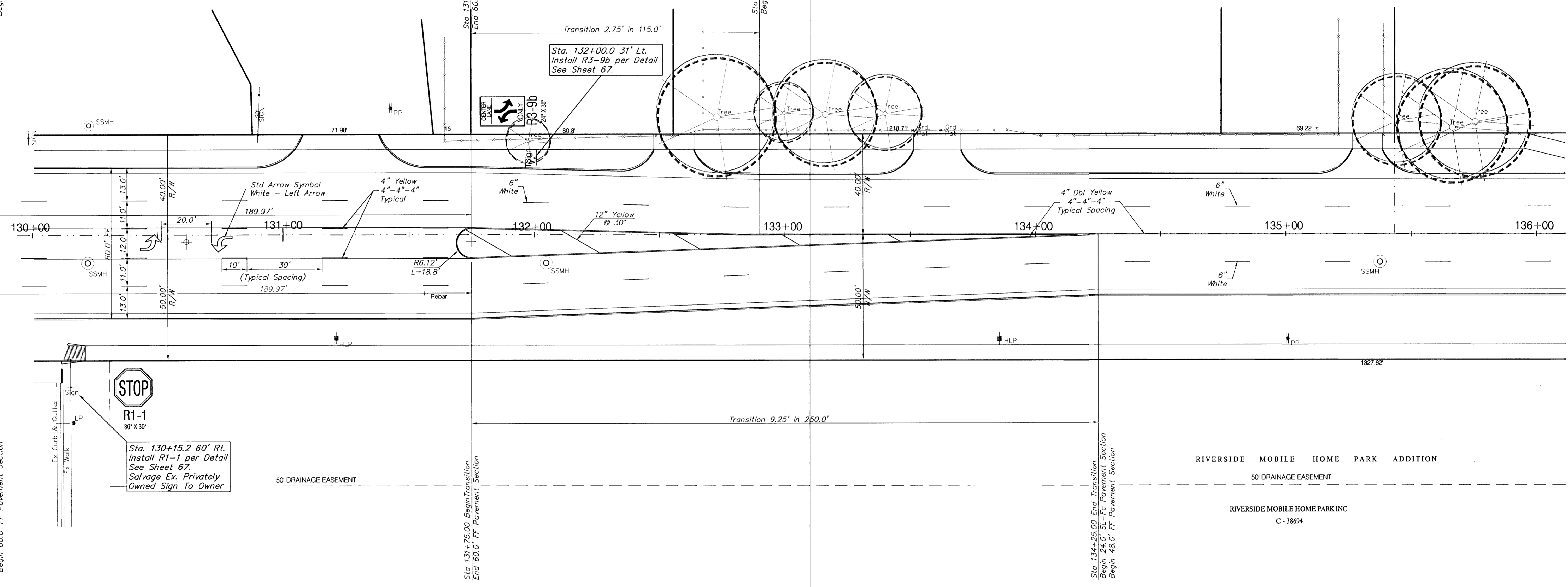
Sta. 129+65.03 End Transition
Begin 60.0' FF Pavement Section

GEORGE McBEATH
B - 22 - 2 - IUP

SANTO & DOROTHY M.
CATANESE
B - 22 - 3 - UP

DOROTHY M.
CATANESE, etv
B - 22 - 1 - UP

SANTO & DOROTHY M.
CATANESE
B - 22 - UP



Sta. 129+65.03 End Transition
Begin 60.0' FF Pavement Section

Sta. 131+75.00 Begin Transition
End 60.0' FF Pavement Section

Sta. 134+25.00 End Transition
Begin 24.0' SL-FC Pavement Section
Begin 48.0' FF Pavement Section

RIVERSIDE MOBILE HOME PARK ADDITION

RIVERSIDE MOBILE HOME PARK INC
C - 38694

PROJECT NUMBER 472-76-245-83324		SHEET NAME MARK03		ENGINEERING DIRECTORY F:\Eng\Hydraulic\Traffic	
DESIGN JFB	DRAWN STAFF	APPROVED JFB	DATE Sept. 2002	SCALE Noted	BAUGHMAN NO 99-09-E450

CAPITAL IMPROVEMENT PROJECT
PAVEMENT MARKING PLAN
HYDRAULIC AVENUE PAVING - 47TH STREET SOUTH TO MACARTHUR ROAD

BAUGHMAN COMPANY, P.A.
ENGINEERING, SURVEYING, & PLANNING
316-282-7271 • 315 ELLIS • WICHITA, KANSAS 67211

SHEET
OF
59
102